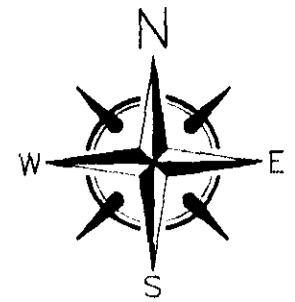


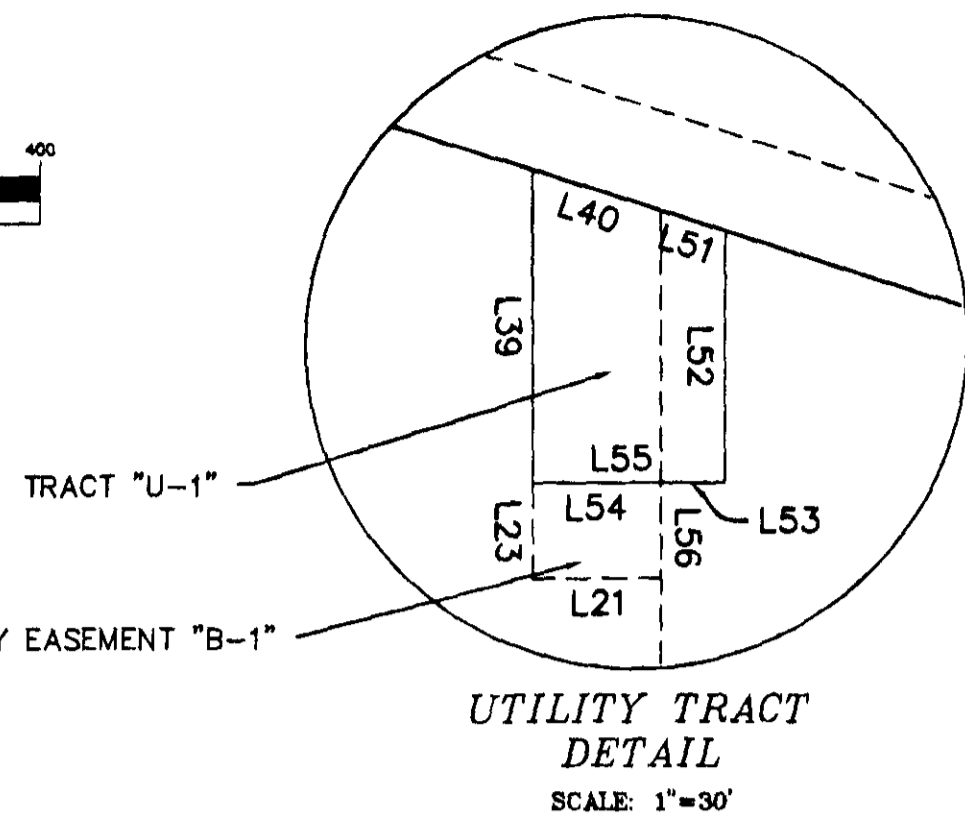
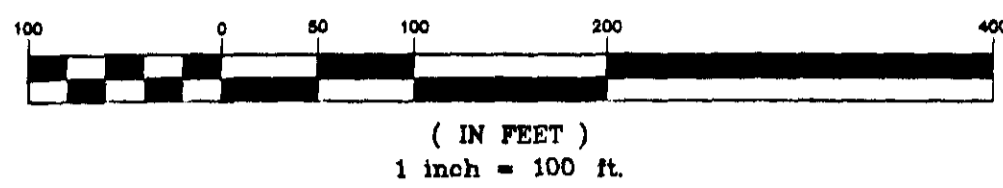
PLANTATION OAKS OF BREVARD, PHASE ONE

A SUBDIVISION LYING IN SECTIONS 10 & 15
 TOWNSHIP 22 SOUTH, RANGE 35 EAST,
 CITY OF TITUSVILLE,
 BREVARD COUNTY, FLORIDA

Prepared By:
MORGAN & Associates
 Consulting Engineers, Inc.
 712 Palmetto Avenue Melbourne, FL 32901
 Phone (321) 722-0407 Fax (321) 724-5979
 L.B. # 7040
 Prepared By: Christopher S. Bowers P.S.M. #5990



GRAPHIC SCALE



CURVE	ARC	RADIUS	DELTA	TAN	CHD BRG	CHD
C1	145.36'	550.00'	15°08'33"	73.10'	N67°05'13"W	144.94'
C2	76.78'	175.00'	25°08'15"	39.02'	S12°59'33"W	76.16'
C3	36.23'	25.00'	83°01'26"	22.13'	N15°57'02"W	33.14'
C4	45.40'	25.00'	104°03'31"	32.03'	N77°32'06"E	38.42'
C5	115.12'	119.46'	55°12'51"	62.47'	S53°10'07"W	110.72'
C6	88.67'	200.00'	25°24'04"	45.07'	N68°04'31"E	87.94'
C7	242.70'	317.00'	43°52'00"	127.65'	N32°07'28"E	236.82'
C8	75.55'	1220.00'	3°32'53"	37.79'	N11°05'05"W	75.54'
C9	65.81'	150.00'	25°08'15"	33.44'	S12°59'33"W	65.28'
C10	25.89'	150.00'	9°53'17"	12.98'	S59°29'40"E	25.88'
C11	67.58'	150.00'	25°48'52"	34.37'	S77°20'45"E	67.01'
C12	54.84'	125.00'	25°08'15"	27.87'	S12°59'33"W	54.40'
C13	36.23'	25.00'	83°01'26"	22.13'	S67°04'24"W	33.14'
C14	57.54'	175.00'	18°50'18"	29.03'	S80°50'02"E	57.28'
C15	45.40'	25.00'	104°03'31"	32.03'	S26°28'04"E	39.42'
C16	25.65'	125.00'	11°45'21"	12.87'	S84°22'30"E	25.60'
C17	59.92'	119.47'	28°44'22"	30.61'	S39°55'54"W	59.30'
C18	55.20'	119.47'	26°28'11"	28.10'	S62°32'23"W	54.71'
C19	27.14'	175.00'	8°33'15"	13.60'	S72°51'31"E	27.12'
C20	30.39'	175.00'	9°57'03"	15.24'	S85°16'39"E	30.36'
C21	23.64'	125.00'	10°50'16"	11.86'	S05°50'33"W	23.61'
C22	31.20'	125.00'	14°18'00"	15.68'	S18°24'41"W	31.12'
C23	36.75'	125.00'	16°50'48"	18.51'	N81°19'25"E	36.82'
C24	39.37'	150.00'	15°02'17"	19.80'	N82°13'40"E	39.26'
C25	42.00'	175.00'	13°45'06"	21.10'	N82°52'16"E	41.90'
C26	203.89'	210.00'	55°37'40"	110.79'	N27°33'39"E	195.97'
C27	197.99'	140.00'	81°01'44"	119.63'	N40°15'41"E	181.90'
C28	90.69'	542.00'	9°35'14"	45.45'	S14°24'25"E	90.59'
C29	84.12'	482.00'	10°00'00"	42.17'	S14°12'02"E	84.02'
C30	45.78'	25.00'	104°55'05"	32.53'	N52°52'58"E	39.65'
C31	26.15'	25.00'	59°56'22"	14.42'	S29°32'45"E	24.98'
C32	172.94'	179.46'	56°12'51"	93.85'	S53°10'07"W	166.33'

LEGEND

- = 4"x4" CONCRETE MONUMENT (SET) WITH NAIL & DISK STAMPED "PRM PSM 5990"
- △ = NAIL AND DISK (SET) STAMPED "PCP PSM 5990"
- C## = CURVE NUMBER FOR CURVE TABLE
- L## = LINE NUMBER FOR LINE TABLE
- (R) = RADIAL
- (NR) = NON-RADIAL
- C.L. = CHAIN-LINK
- ESMT. = EASEMENT
- OHW = OVERHEAD WIRES
- P.B. = PLAT BOOK
- PC = POINT-OF-CURVATURE
- PCP = PERMANENT CONTROL POINT
- PG. = PAGE
- PI = POINT-OF-INTERSECTION
- POC = POINT-ON-CURVE
- POL = POINT-ON-LINE
- PRC = POINT-OF-REVERSE CURVATURE
- PRM = PERMANENT REFERENCE MONUMENT
- PSM = PROFESSIONAL SURVEYOR & MAPPER
- PT = POINT-OF-TANGENCY
- P.U. & D.E. = PUBLIC UTILITIES AND DRAINAGE EASEMENT
- R/W = RIGHT-OF-WAY
- RP = RADIUS POINT

LINE TABLE

LINE	LENGTH	BEARING
L1	32.02	S38°14'10"E
L2	32.02	N39°05'01"E
L3	31.78	N00°25'26"E
L4	88.00	N25°33'41"E
L5	63.23	N15°43'41"E
L6	50.00	S64°26'19"E
L8	8.83	N89°44'49"E
L9	23.32	S22°41'54"W
L10	50.63	S06°20'43"E
L11	53.00	N25°33'41"E
L12	25.71	N64°26'19"W
L13	25.71	N64°26'19"W
L14	31.78	N00°25'26"E
L15	10.72	N89°44'49"E
L16	19.76	N89°44'49"E
L17	15.00	N89°44'49"E
L18	10.00	N64°26'19"W
L19	35.23	N25°33'41"E
L20	20.00	S89°44'49"W
L21	20.00	S89°44'49"W
L22	65.97	N71°59'19"W
L23	15.00	N00°15'11"W
L24	52.65	S71°59'19"E
L25	70.00	S71°59'19"E
L26	15.80	N00°15'11"W
L27	88.30	N80°41'21"E
L28	15.72	N80°41'21"E
L29	115.00	S00°15'11"E
L30	50.13	N04°25'27"W
L31	175.00	N00°15'11"W
L32	159.99	S89°44'49"W
L33	15.28	S79°34'21"W
L34	90.87	S19°12'02"E
L35	92.23	S08°36'18"W
L36	19.87	N88°57'52"W
L37	148.96	N08°03'41"E
L38	50.07	N08°03'41"E
L39	49.90	N00°15'11"W
L40	21.06	S71°59'19"E
L41	50.07	N08°03'41"E
L42	145.63	N08°03'41"E
L43	78.54	N09°12'02"W
L44	160.84	N19°12'02"W
L45	91.00	N81°07'12"E
L46	150.33	S89°44'49"W
L47	115.00	N00°15'11"W
L48	50.13	N04°25'27"W
L49	115.00	S00°15'11"E
L50	10.35	N89°01'00"W
L51	10.53	S71°59'19"E
L52	40.00	S00°15'11"E
L53	10.00	S89°44'49"W
L54	20.00	S89°44'49"W
L55	30.00	S89°44'49"W
L56	15.00	S00°15'11"E

