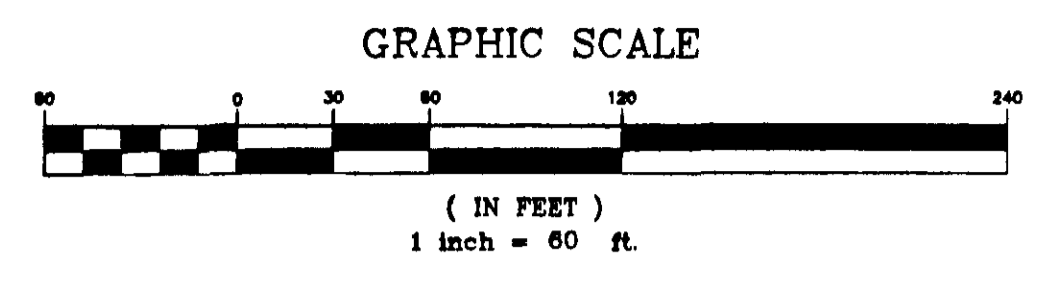
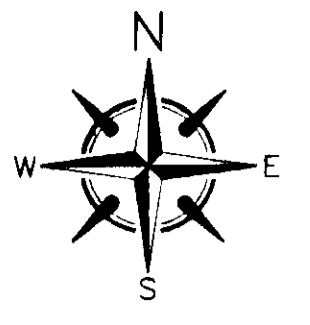


PLANTATION OAKS OF BREVARD, PHASE ONE

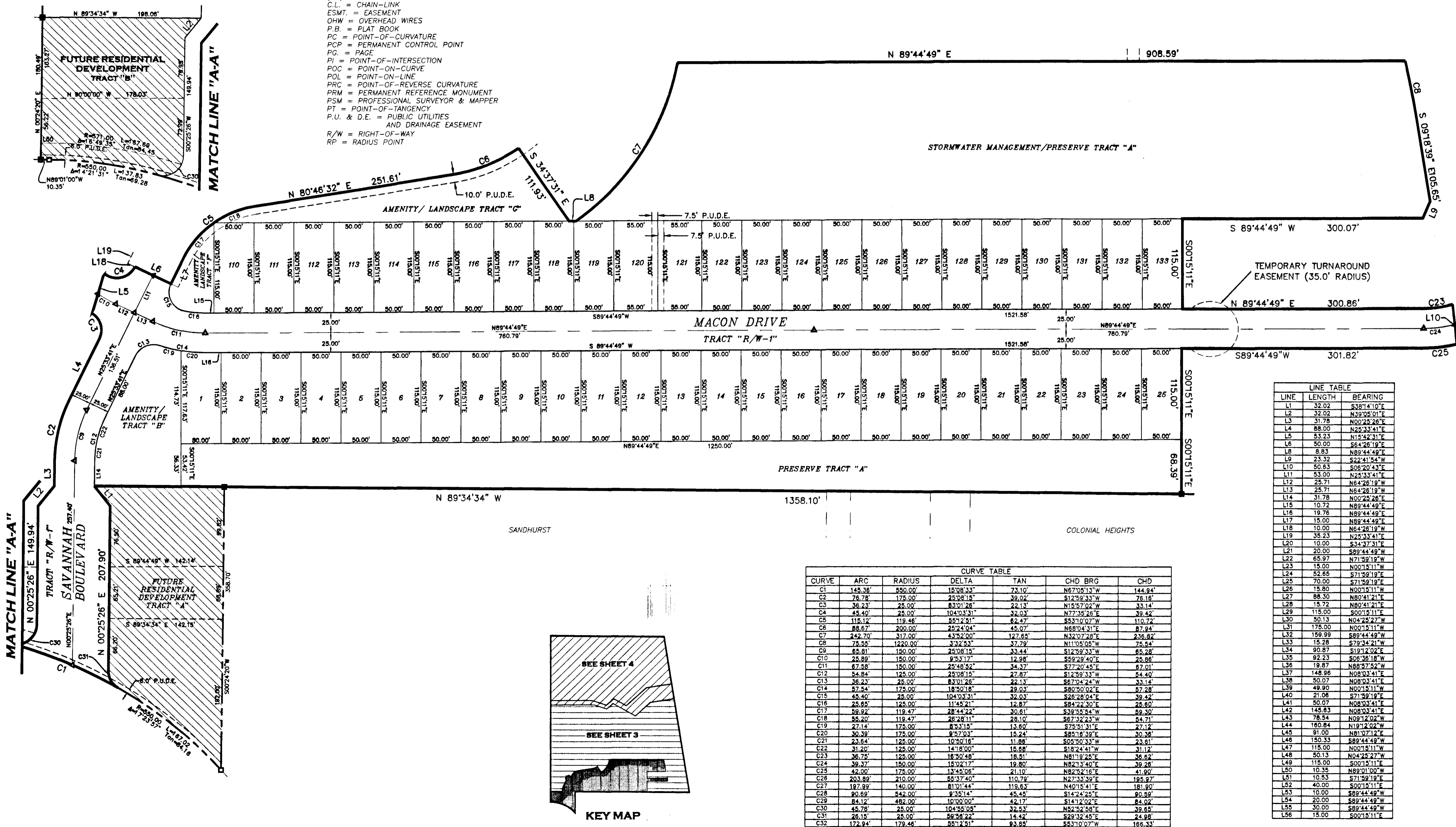
A SUBDIVISION LYING IN SECTIONS 10 & 15 TOWNSHIP 22 SOUTH, RANGE 35 EAST, CITY OF TITUSVILLE, BREVARD COUNTY, FLORIDA

Prepared By:
MORGAN & Associates
 Consulting Engineers, Inc.
 712 Palmetto Avenue Melbourne, FL 32901
 Phone (321) 722-0407 Fax (321) 724-5979
 L.B. # 7040
 Prepared By: Christopher S. Bowers P.S.M. #5990



LEGEND

- = 4"x4" CONCRETE MONUMENT (SET) WITH NAIL & DISK STAMPED "PRM PSM 5990"
- △ = NAIL AND DISK (SET) STAMPED "PCP PSM 5990"
- C## = CURVE NUMBER FOR CURVE TABLE
- L## = LINE NUMBER FOR LINE TABLE
- (R) = RADIAL
- (NR) = NON-RADIAL
- C.L. = CHAIN-LINK
- ESMT. = EASEMENT
- OHW = OVERHEAD WIRES
- P.B. = PLAT BOOK
- PC = POINT-OF-CURVATURE
- PCP = PERMANENT CONTROL POINT
- PG. = PAGE
- PI = POINT-OF-INTERSECTION
- POC = POINT-ON-CURVE
- POL = POINT-ON-LINE
- PRC = POINT-OF-REVERSE CURVATURE
- PRM = PERMANENT REFERENCE MONUMENT
- PSM = PROFESSIONAL SURVEYOR & MAPPER
- PT = POINT-OF-TANGENCY
- P.U. & D.E. = PUBLIC UTILITIES AND DRAINAGE EASEMENT
- R/W = RIGHT-OF-WAY
- RP = RADIUS POINT



LINE	LENGTH	BEARING
L1	32.02	S38°14'10"E
L2	32.02	N39°05'01"E
L3	31.78	N00°25'26"E
L4	88.00	N25°33'41"E
L5	53.23	N15°42'31"E
L6	50.00	S64°26'19"E
L7	8.83	N89°44'49"E
L8	23.32	S22°41'54"W
L9	50.63	S06°20'43"E
L10	53.00	N25°33'41"E
L11	25.71	N64°26'19"W
L12	25.71	N64°26'19"W
L13	25.71	N64°26'19"W
L14	31.78	N00°25'26"E
L15	10.72	N89°44'49"E
L16	19.78	N89°44'49"E
L17	15.00	N89°44'49"E
L18	10.00	N64°26'19"E
L19	35.23	N25°33'41"E
L20	10.00	S34°37'31"E
L21	20.00	S89°44'49"W
L22	65.97	N71°59'19"W
L23	15.00	N00°15'11"W
L24	52.65	S71°59'19"E
L25	70.00	S71°59'19"E
L26	15.80	N00°15'11"W
L27	88.30	N80°41'21"E
L28	15.72	N80°41'21"E
L29	115.00	S00°15'11"E
L30	50.13	N04°25'27"W
L31	175.00	N89°44'49"E
L32	159.99	S89°44'49"W
L33	15.28	S79°34'21"W
L34	90.87	S19°12'02"E
L35	92.23	S06°36'18"W
L36	19.87	N88°57'52"W
L37	148.96	N08°03'41"E
L38	50.07	N08°03'41"E
L39	49.90	N00°15'11"W
L40	21.06	S71°59'19"E
L41	50.07	N08°03'41"E
L42	145.63	N08°03'41"E
L43	78.54	N89°12'02"W
L44	160.54	N19°12'02"W
L45	91.00	N81°07'12"E
L46	150.33	S89°44'49"W
L47	115.00	N00°15'11"W
L48	50.13	N04°25'27"W
L49	115.00	S00°15'11"E
L50	10.35	N89°01'00"W
L51	10.53	S71°59'19"E
L52	40.00	S00°15'11"E
L53	10.00	S89°44'49"W
L54	20.00	S89°44'49"W
L55	30.00	S89°44'49"W
L56	15.00	S00°15'11"E

CURVE	ARC	RADIUS	DELTA	TAN	CHD BRG	CHD
C1	145.36	550.00	18°08'33"	73.10	N67°05'13"W	144.94
C2	76.78	175.00	25°08'15"	39.02	S12°59'33"W	76.16
C3	36.23	25.00	83°01'26"	22.13	N15°57'02"W	33.14
C4	45.40	25.00	104°03'31"	32.03	N77°35'26"E	39.42
C5	115.12	119.46	55°12'51"	62.47	S53°10'07"W	110.72
C6	88.67	200.00	25°42'00"	45.07	N65°04'31"E	87.94
C7	242.70	317.00	43°24'00"	127.65	N32°07'20"E	236.82
C8	75.85	120.00	33°25'53"	37.79	N11°05'05"W	75.64
C9	65.81	150.00	25°08'15"	33.44	S12°59'33"W	65.28
C10	25.89	150.00	9°53'17"	12.98	S59°29'40"E	25.88
C11	67.58	150.00	25°48'52"	34.37	S77°20'45"E	67.01
C12	54.84	125.00	25°08'15"	27.87	S12°59'33"W	54.40
C13	36.23	25.00	83°01'26"	22.13	S67°04'24"W	33.14
C14	57.54	175.00	18°30'18"	29.03	S80°50'02"E	57.28
C15	45.40	25.00	104°03'31"	32.03	S26°28'04"E	39.42
C16	25.85	125.00	11°45'21"	12.87	S84°22'30"E	25.60
C17	59.92	119.47	28°44'22"	30.61	S39°55'54"W	59.30
C18	55.20	119.47	28°28'11"	28.10	S67°32'23"W	54.71
C19	27.14	175.00	8°35'19"	13.60	S75°51'31"E	27.12
C20	30.39	175.00	9°52'03"	15.24	S85°18'39"E	30.38
C21	23.64	125.00	10°50'16"	11.88	S05°50'33"W	23.61
C22	31.20	125.00	14°18'00"	15.68	S18°24'41"W	31.12
C23	36.75	125.00	16°50'48"	18.51	N81°19'25"E	36.62
C24	39.37	150.00	15°02'17"	19.80	N82°13'40"E	39.28
C25	42.00	175.00	13°45'06"	21.10	N82°52'16"E	41.90
C26	203.89	210.00	55°37'40"	110.79	N27°33'39"E	195.97
C27	197.99	140.00	81°01'44"	119.63	N40°15'41"E	181.90
C28	90.69	542.00	9°35'14"	45.45	S14°24'25"E	90.59
C29	84.12	482.00	10°00'00"	42.17	S14°12'02"E	84.02
C30	45.78	25.00	104°55'05"	32.53	N52°52'58"E	39.65
C31	28.15	28.00	89°58'22"	14.42	S29°32'45"E	24.98
C32	172.94	179.46	55°12'51"	83.89	S53°10'07"W	166.33

