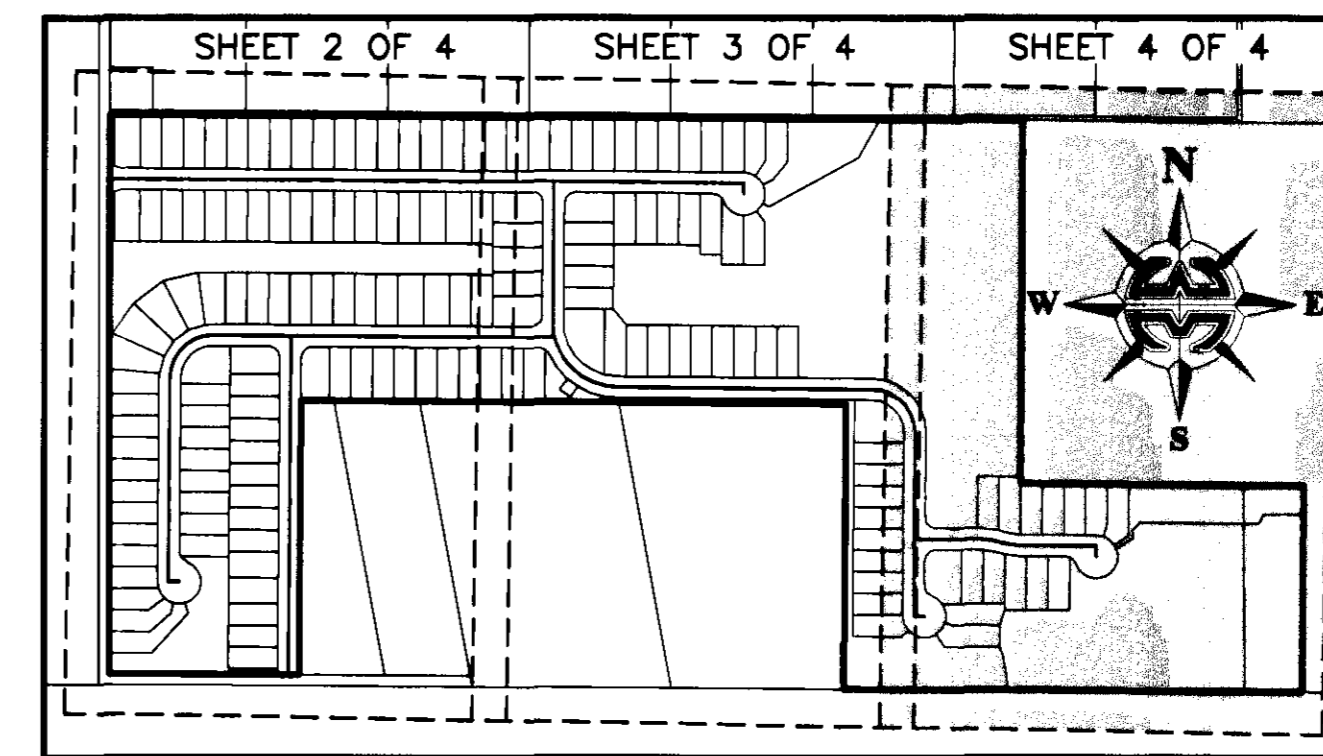


# STERLING FOREST

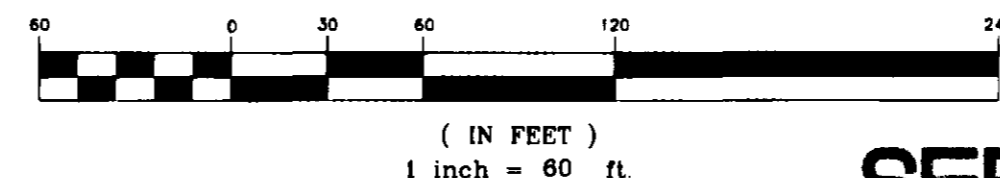
A SUBDIVISION LYING IN THE SECTION 27, TOWNSHIP 22 SOUTH,  
 RANGE 35 EAST, CITY OF TITUSVILLE, COUNTY OF BREVARD, FLORIDA

KEY MAP  
 NOT TO SCALE

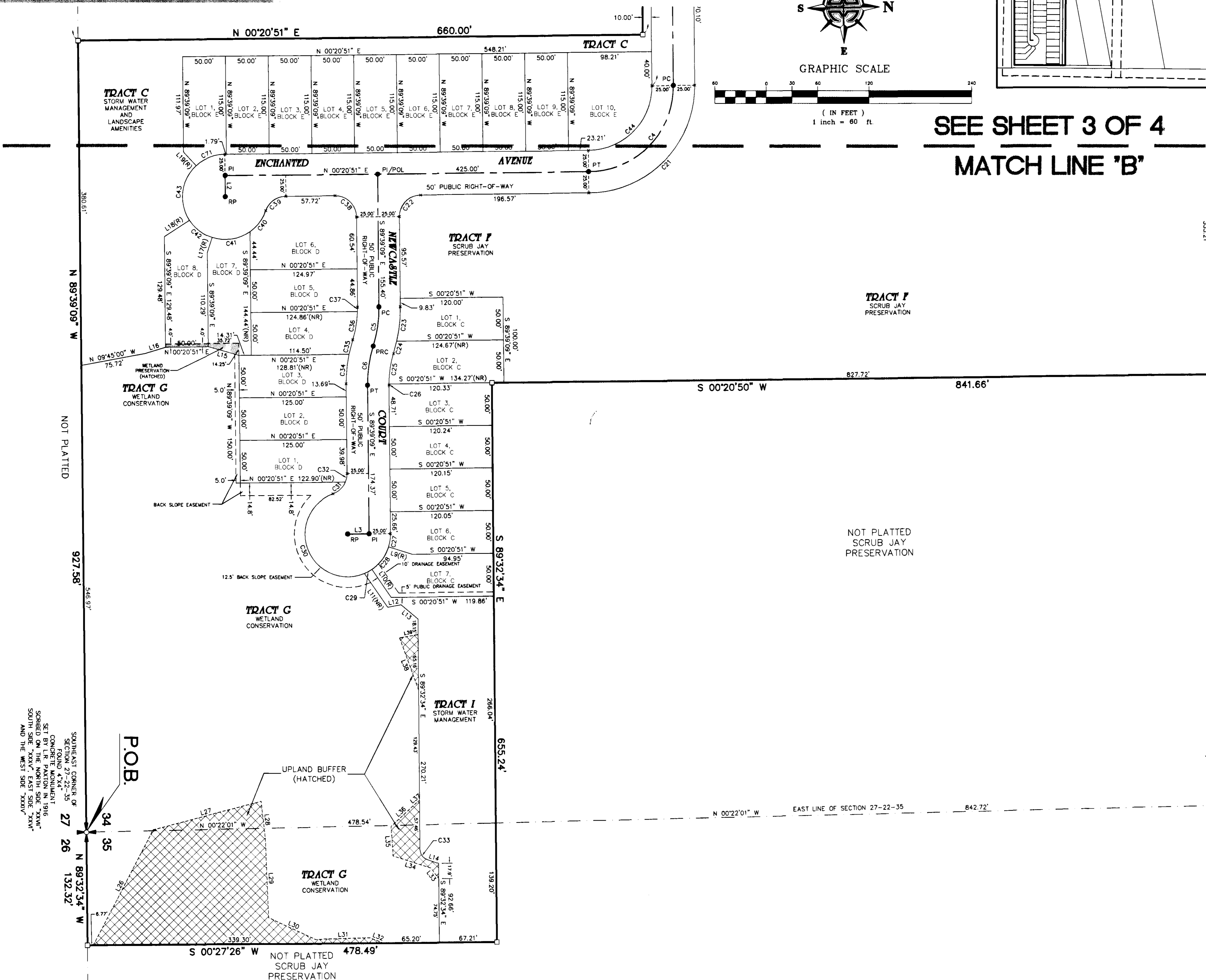
NOTICE: THIS PLAT, AS RECORDED IN ITS GRAPHIC FORM, IS THE OFFICIAL DEPICTION OF THE SUBDIVIDED LANDS DESCRIBED HEREIN AND WILL IN NO CIRCUMSTANCES BE SUPPLANTED IN AUTHORITY BY ANY OTHER GRAPHIC OR DIGITAL FORM OF THE PLAT. THERE MAY BE ADDITIONAL RESTRICTIONS THAT ARE NOT RECORDED ON THIS PLAT THAT MAY BE FOUND IN THE PUBLIC RECORDS OF THIS COUNTY.



GRAPHIC SCALE



SEE SHEET 3 OF 4  
 MATCH LINE 'B'



- LEGEND:**
- = 4"x4" CONCRETE MONUMENT WITH NAIL AND DISK MARKED "PRM PLS 5060" (SET)
  - = 4"x4" CONCRETE MONUMENT WITH NAIL AND DISK MARKED "PRM PLS 5060" (FOUND)
  - = NAIL AND DISK MARKED "PCP PLS 5060" (SET)
  - = NAIL AND DISK MARKED "PCP PLS 5060" (FOUND)
  - ▲ = NAIL AND DISK MARKED "PRM PLS 5060" (SET)
  - △ = NAIL AND DISK MARKED "PRM PLS 5060" (FOUND)
  - PUB/DE = PUBLIC UTILITIES AND DRAINAGE EASEMENT
  - C# = CURVE NUMBER FOR CURVE TABLE
  - L# = LINE NUMBER FOR LINE TABLE
  - R/W = RIGHT-OF-WAY
  - P.B. = PLAT BOOK
  - PC = PAGE
  - RP = RADIUS POINT
  - POL = POINT-ON-LINE
  - POC = POINT-ON-CURVE
  - PI = POINT-OF-INTERSECTION
  - PT = POINT-OF-TANGENCY
  - PC = POINT-OF-CURVATURE
  - PRC = POINT-OF-REVERSE CURVATURE
  - PCC = POINT-OF-COMPOUND CURVATURE
  - P.O.C. = POINT-OF-BEGINNING
  - PRM = PERMANENT REFERENCE MONUMENT
  - PCP = PERMANENT CONTROL POINT
  - X = DENOTES LINE BREAK
  - (R) = RADIAL
  - (NR) = NON-RADIAL
  - ESMT = EASEMENT
  - O.R.B./O.R.Book = OFFICIAL RECORDS BOOK
  - H.O.A. = HOME OWNERS ASSOCIATION
  - LB = LICENSED BUSINESS
  - PLS = PROFESSIONAL LAND SURVEYOR
  - PSM = PROFESSIONAL SURVEYOR AND MAPPER
  - R = RADIUS
  - D = DELTA
  - L = LENGTH
  - CD = CHORD DISTANCE
  - CB = CHORD BEARING

**LINE TABLE**

LINE	LENGTH	BEARING
L1	25.00'	N 00°20'30" E
L2	25.00'	N 89°39'09" W
L3	25.00'	N 00°20'51" E
L4	25.00'	N 89°39'09" W
L5(R)	42.97'	N 32°53'01" E
L6(R)	25.00'	N 63°48'56" E
L7(R)	15.96'	N 62°37'34" W
L8(R)	32.61'	S 36°54'08" E
L9(R)	28.85'	S 18°19'36" W
L10(R)	39.59'	S 56°25'22" E
L11(NR)	47.81'	N 56°25'22" E
L12	16.00'	S 09°44'44" E
L13	25.81'	N 41°21'08" E
L14	14.14'	N 22°00'54" E
L15	37.16'	N 16°21'53" E
L16	24.90'	N 16°04'55" W
L17(R)	18.49'	S 71°17'42" E
L18(R)	34.97'	S 32°16'19" E
L19(R)	21.66'	S 48°04'25" W
L20(NR)	40.63'	S 36°29'46" W
L21	40.00'	N 53°30'14" W
L22(NR)	41.81'	S 36°29'46" W
L23(R)	25.00'	S 15°35'58" E
L24(R)	25.10'	N 15°19'58" E
L25(NR)	45.83'	N 51°33'59" E
L26	152.17'	N 81°38'44" W
L27	130.51'	N 13°51'16" W
L28	44.25'	N 84°31'45" E
L29	92.10'	N 88°37'06" E
L30	60.45'	N 25°33'38" E
L31	63.84'	N 00°45'20" W
L32	16.81'	N 22°48'10" E
L33	15.66'	S 54°44'44" W
L34	46.28'	S 18°36'40" W
L35	34.52'	S 86°57'18" W
L36	40.49'	N 42°07'17" W
L37	4.76'	N 37°05'40" W
L38	55.16'	S 71°04'45" W
L39	21.93'	N 09°14'05" W
L40	8.41'	S 89°39'10" E
L41	9.59'	N 89°39'10" E

**CURVE TABLE**

CURVE	RADIUS	DELTA	LENGTH	CHORD	CHORD BEARING
C1	150.00'	89°59'58"	235.62'	212.13'	S 44°39'10" E
C2	150.00'	132°39'35"	35.32'	35.24'	S 06°23'58" E
C3	150.00'	76°30'24"	200.29'	185.74'	S 51°23'57" E
C4	100.00'	90°00'00"	157.08'	141.42'	N 44°39'09" W
C5	150.00'	17°44'55"	46.47'	46.28'	N 80°46'41" W
C6	150.00'	17°44'55"	46.47'	46.28'	S 80°46'41" E
C7	100.00'	90°00'00"	157.08'	141.42'	S 45°20'51" W
C8	25.00'	53°07'48"	23.18'	22.36'	S 26°35'08" E
C9	50.00'	32°32'11"	28.39'	28.01'	N 73°23'05" W
C10	50.00'	30°55'55"	26.99'	26.67'	N 41°39'01" W
C11	50.00'	53°33'29"	46.74'	45.06'	N 00°35'41" E
C12	50.00'	25°43'26"	22.45'	22.26'	N 40°14'09" E
C13	50.00'	37°14'58"	32.51'	31.94'	N 71°43'21" E
C14	50.00'	70°31'44"	61.95'	57.74'	S 54°23'19" E
C15	25.00'	14°35'29"	6.37'	6.35'	N 26°25'11" W
C16	25.00'	55°56'15"	24.41'	23.45'	N 61°41'03" W
C17	25.00'	76°12'02"	166.24'	154.26'	S 37°45'12" E
C18	125.00'	13°47'56"	30.10'	30.03'	S 82°45'11" E
C19	125.00'	90°00'00"	196.35'	176.78'	N 44°39'09" W
C20	25.00'	90°00'00"	39.27'	35.36'	S 44°39'09" E
C21	175.00'	131°07'40"	40.53'	40.44'	N 83°01'05" W
C22	175.00'	42°8'49"	13.68'	13.68'	N 74°08'36" W
C23	125.00'	17°09'31"	37.43'	37.29'	S 80°28'59" E
C24	125.00'	03°52'11"	1.29'	1.29'	S 89°21'26" E
C25	50.00'	17°58'45"	15.69'	15.63'	N 80°39'46" W
C26	50.00'	38°05'47"	33.25'	32.64'	N 52°37'31" W
C27	50.00'	11°32'13"	10.07'	10.05'	N 27°48'31" E
C28	50.00'	182°54'59"	159.62'	99.97'	N 69°25'05" E
C29	25.00'	46°53'44"	20.46'	19.90'	N 42°34'17" W
C30	25.00'	23°38'00"	10.31'	10.24'	N 77°50'09" W
C31	12.50'	70°26'32"	15.37'	14.42'	N 55°14'10" E
C32	175.00'	11°58'36"	36.58'	36.51'	S 83°39'51" E
C33	175.00'	152°33'35"	33.58'	33.46'	N 78°36'01" W
C34	125.00'	27°12'11"	5.14'	5.14'	N 88°28'28" W
C35	90.00'	32°55'38"	14.37'	14.17'	N 73°11'20" W
C36	25.00'	90°00'00"	39.27'	35.36'	S 45°20'51" W
C37	25.00'	25°45'10"	11.24'	11.14'	S 12°31'44" E
C38	25.00'	44°46'34"	19.54'	19.04'	S 47°47'35" E
C39	50.00'	144°34'55"	126.17'	95.26'	N 02°06'35" E
C40	50.00'	30°55'55"	26.99'	26.67'	N 89°52'00" E
C41	50.00'	28°57'18"	25.27'	25.00'	S 60°11'23" E
C42	50.00'	28°56'56"	25.26'	24.99'	S 31°14'16" E
C43	50.00'	17°06'39"	14.83'	14.88'	S 08°12'28" E
C44	125.00'	4°36'43"	10.06'	10.06'	S 02°39'13" W
C45	125.00'	191°11'17"	41.86'	41.67'	S 14°33'13" W
C46	125.00'	191°11'17"	41.86'	41.67'	S 33°44'30" W
C47	125.00'	191°11'17"	41.86'	41.67'	S 52°55'47" W
C48	125.00'	191°11'17"	41.86'	41.67'	S 72°07'05" W
C49	125.00'	8°38'08"	18.84'	18.82'	S 86°01'47" W
C50	25.00'	90°00'00"	39.27'	35.36'	N 45°20'50" E
C51	25.00'	90°00'00"	39.27'	35.36'	N 44°39'10" W
C52	25.00'	37°14'15"	16.25'	15.95'	N 71°43'42" E
C53	25.00'	53°07'48"	23.18'	22.36'	S 26°32'41" W
C54	50.00'	42°8'27"	36.89'	36.06'	S 20°47'22" E
C55	4.50'	162°00'55"	12.72'	8.89'	S 00°15'26" E
C56	45.00'	9°35'48"	7.54'	7.53'	S 85°32'56" W
C57	45.00'	8°56'57"	7.03'	7.02'	N 84°31'51" W
C58	4.50'	162°00'55"	12.72'	8.89'	N 00°57'05" E
C59	45.00'	8°23'17"	6.59'	6.58'	N 86°09'11" E
C60	45.00'	8°23'17"	6.59'	6.58'	S 85°27'32" E

