

STERLING FOREST

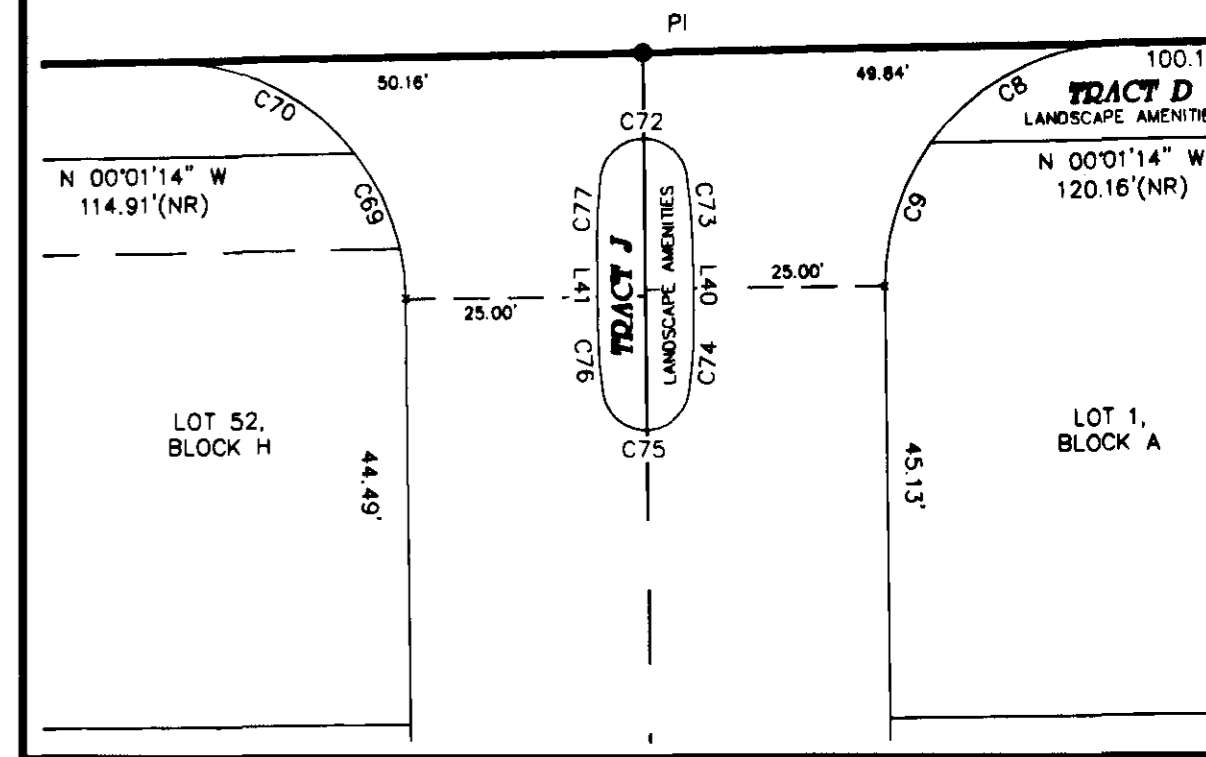
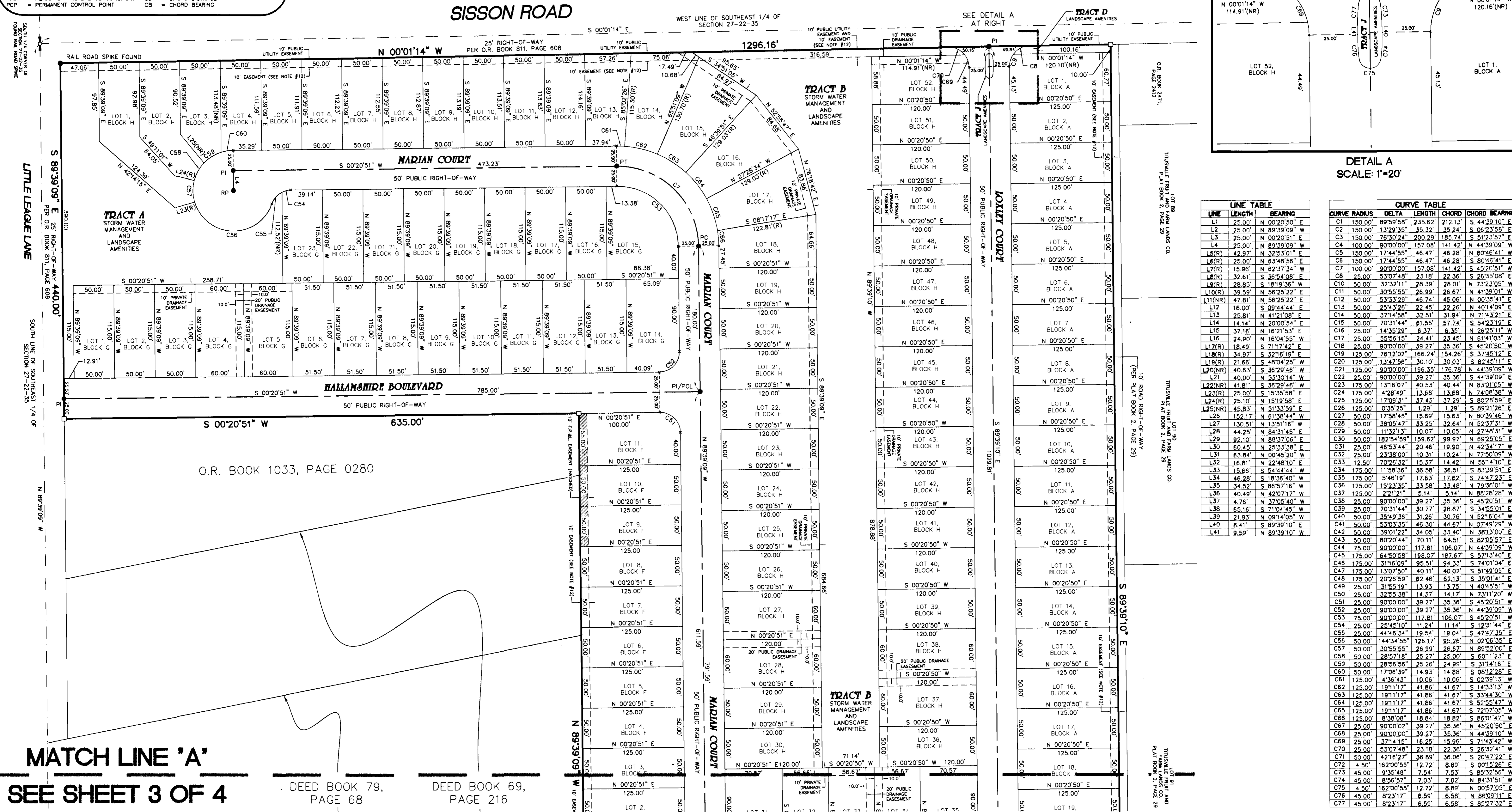
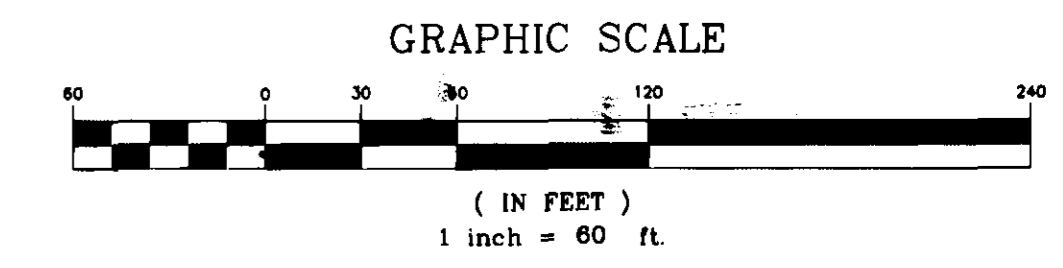
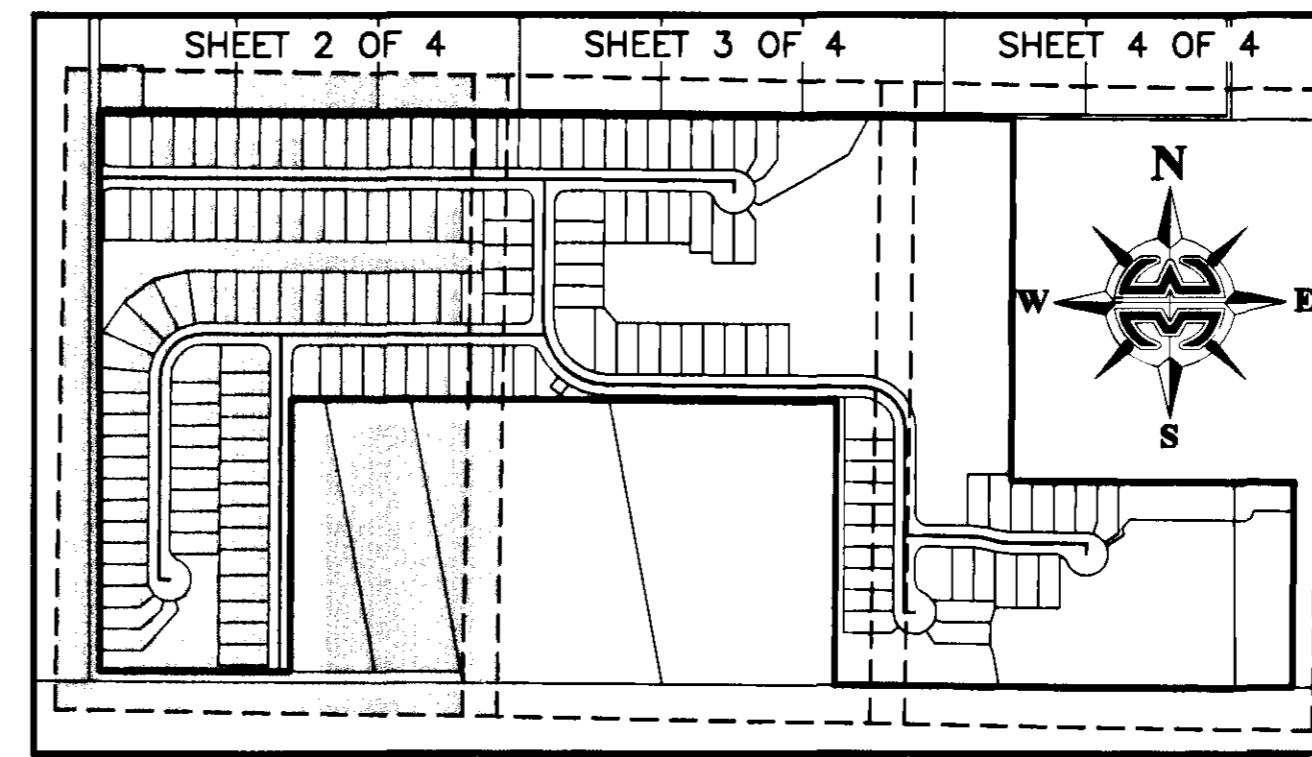
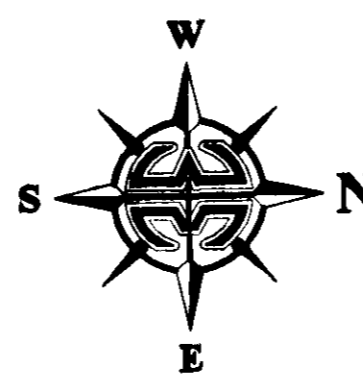
A SUBDIVISION LYING IN THE SECTION 27, TOWNSHIP 22 SOUTH,
 RANGE 35 EAST, CITY OF TITUSVILLE, COUNTY OF BREVARD, FLORIDA

KEY MAP
 NOT TO SCALE

- LEGEND:**
- 4"x4" CONCRETE MONUMENT WITH NAIL AND DISK MARKED "PRM PLS 5060" (SET)
 - 4"x4" CONCRETE MONUMENT WITH NAIL AND DISK MARKED "PRM PLS 5060" (FOUND)
 - NAIL AND DISK MARKED "PCP PLS 5060" (SET)
 - NAIL AND DISK MARKED "PCP PLS 5060" (FOUND)
 - NAIL AND DISK MARKED "PRM PLS 5060" (SET)
 - NAIL AND DISK MARKED "PRM PLS 5060" (FOUND)
 - NAIL AND DISK MARKED "PCP PLS 5060" (SET)
 - NAIL AND DISK MARKED "PCP PLS 5060" (FOUND)
 - NAIL AND DISK MARKED "PRM PLS 5060" (SET)
 - NAIL AND DISK MARKED "PRM PLS 5060" (FOUND)
 - PUBLIC UTILITIES AND DRAINAGE EASEMENT
 - CURVE NUMBER FOR CURVE TABLE
 - LINE NUMBER FOR LINE TABLE
 - RIGHT-OF-WAY
 - PLAT BOOK
 - PAGE
 - RADIUS POINT
 - POINT-ON-LINE
 - POINT-ON-CURVE
 - POINT-OF-INTERSECTION
 - POINT-OF-TANGENCY
 - POINT-OF-CURVATURE
 - POINT-OF-REVERSE CURVATURE
 - POINT-OF-COMPOUND CURVATURE
 - POINT-OF-BEGINNING
 - POINT-OF-COMMENCEMENT
 - PERMANENT REFERENCE MONUMENT
 - PERMANENT CONTROL POINT
 - X = DENOTES LINE BREAK
 - (R) = RADIAL
 - (NR) = NON-RADIAL
 - ESMT. = EASEMENT
 - O.R.B./O.R.Book = OFFICIAL RECORDS BOOK
 - H.O.A. = HOME OWNERS ASSOCIATION
 - LB = LICENSED BUSINESS
 - PLS = PROFESSIONAL LAND SURVEYOR
 - PSM = PROFESSIONAL SURVEYOR AND MAPPER
 - RADIUS
 - L = LENGTH
 - CD = CHORD DISTANCE
 - CB = CHORD BEARING

NOTE:
 PRIOR TO THE RELEASE OF THE PERFORMANCE BOND,
 ALL LOT CORNER MONUMENTATION WILL BE SET AS
 1/2" IRON RODS WITH CAPS MARKED "LB 3608".

NOTICE: THIS PLAT, AS RECORDED IN ITS GRAPHIC FORM, IS THE OFFICIAL
 DEPICTION OF THE SUBDIVIDED LANDS DESCRIBED HEREIN AND WILL IN NO
 CIRCUMSTANCES BE SUPPLANTED IN AUTHORITY BY ANY OTHER GRAPHIC OR
 DIGITAL FORM OF THE PLAT. THERE MAY BE ADDITIONAL RESTRICTIONS THAT
 ARE NOT RECORDED ON THIS PLAT THAT MAY BE FOUND IN THE PUBLIC
 RECORDS OF THIS COUNTY.



DETAIL A
 SCALE: 1"=20'

LINE TABLE

LINE	LENGTH	BEARING
L1	25.00'	N 00°20'50" E
L2	150.00'	N 89°39'09" W
L3	25.00'	N 00°20'51" E
L4	25.00'	N 89°39'09" W
L5(R)	42.97'	N 32°33'01" E
L6(R)	25.00'	N 63°48'56" E
L7(R)	15.96'	N 62°37'34" W
L8(R)	32.61'	S 36°54'08" E
L9(R)	28.85'	S 18°19'36" W
L10(R)	39.59'	S 56°25'22" E
L11(NR)	47.81'	N 56°25'22" E
L12	16.00'	S 09°44'44" E
L13	25.81'	N 41°21'08" E
L14	14.14'	N 20°00'54" E
L15	37.16'	N 89°39'09" W
L16	24.80'	N 16°04'55" W
L17(R)	18.49'	S 71°17'42" E
L18(R)	34.97'	S 32°16'19" E
L19(R)	21.66'	S 48°04'25" W
L20(NR)	40.63'	S 36°29'46" W
L21	40.00'	N 53°30'14" W
L22(NR)	41.81'	S 36°29'46" W
L23	175.00'	S 15°35'58" E
L24	175.00'	N 72°09'31" E
L25(NR)	45.83'	N 51°33'59" E
L26	152.17'	N 81°38'44" W
L27	130.51'	N 13°51'16" W
L28	44.25'	N 84°31'45" E
L29	92.10'	N 88°37'06" E
L30	60.45'	N 25°33'38" E
L31	63.84'	N 00°45'20" W
L32	16.81'	N 22°48'10" W
L33	15.66'	S 54°44'44" W
L34	46.28'	S 18°36'40" W
L35	34.52'	S 86°57'16" W
L36	40.49'	N 42°07'17" W
L37	4.76'	N 37°05'40" W
L38	65.16'	S 71°04'45" W
L39	21.93'	N 09°14'05" W
L40	8.41'	N 89°39'10" E
L41	9.59'	N 89°39'10" W

CURVE TABLE

CURVE	RADIUS	DELTA	LENGTH	CHORD	CHORD BEARING
C1	150.00'	89°59'58"	235.62'	212.13'	S 44°39'10" E
C2	150.00'	13°29'35"	35.32'	35.24'	S 06°23'58" E
C3	150.00'	76°30'24"	200.29'	185.74'	S 51°23'57" E
C4	100.00'	90°00'00"	157.08'	141.42'	N 44°33'09" W
C5	150.00'	17°44'55"	46.47'	46.28'	N 80°46'41" W
C6	150.00'	17°44'55"	46.47'	46.28'	S 80°46'41" W
C7	100.00'	90°00'00"	157.08'	141.42'	S 45°20'51" W
C8	25.00'	53°07'48"	23.18'	22.36'	S 26°30'08" E
C9	50.00'	30°55'55"	26.99'	26.67'	N 41°39'01" E
C10	50.00'	53°33'29"	46.74'	45.06'	N 00°35'41" E
C11	50.00'	25°43'26"	22.45'	22.26'	N 40°14'09" E
C12	50.00'	37°14'58"	32.51'	31.94'	N 71°43'21" E
C13	50.00'	70°31'44"	61.55'	57.74'	S 54°23'19" E
C14	25.00'	14°35'29"	6.37'	6.35'	N 26°25'11" W
C15	25.00'	55°56'15"	24.41'	23.45'	N 61°41'03" W
C16	25.00'	90°00'00"	39.27'	35.36'	S 45°20'50" W
C17	25.00'	182°54'59"	159.62'	99.97'	N 69°25'05" E
C18	25.00'	46°53'44"	20.46'	19.90'	N 42°34'17" W
C19	25.00'	23°38'20"	10.31'	10.24'	N 77°50'09" W
C20	125.00'	70°26'32"	15.37'	14.42'	N 55°14'10" E
C21	175.00'	11°58'36"	36.58'	36.51'	S 83°39'51" E
C22	175.00'	54°46'19"	176.33'	176.27'	S 74°47'23" E
C23	125.00'	152°33'35"	33.58'	33.48'	N 79°36'01" E
C24	125.00'	20°26'59"	62.46'	62.13'	S 30°51'44" E
C25	50.00'	31°55'16"	13.93'	13.75'	N 40°45'51" E
C26	50.00'	32°55'38"	14.37'	14.17'	N 73°11'20" W
C27	25.00'	90°00'00"	39.27'	35.36'	S 45°20'51" W
C28	25.00'	90°00'00"	39.27'	35.36'	N 44°39'09" W
C29	75.00'	90°00'00"	117.81'	106.07'	S 45°20'51" W
C30	25.00'	25°45'10"	11.24'	11.14'	S 12°31'44" E
C31	25.00'	44°46'34"	19.54'	19.04'	S 47°47'35" E
C32	50.00'	144°34'55"	126.17'	95.26'	N 02°06'35" E
C33	50.00'	30°55'55"	26.99'	26.67'	N 89°52'00" E
C34	50.00'	28°57'18"	25.27'	25.00'	S 60°11'23" E
C35	50.00'	28°56'56"	25.26'	24.99'	S 31°14'16" E
C36	50.00'	17°06'39"	14.93'	14.89'	S 08°12'28" E
C37	125.00'	4°36'43"	10.06'	10.06'	S 02°39'13" E
C38	125.00'	19°11'17"	41.86'	41.67'	S 14°33'13" W
C39	125.00'	19°11'17"	41.86'	41.67'	S 33°44'30" W
C40	125.00'	19°11'17"	41.86'	41.67'	S 52°55'47" W
C41	125.00'	19°11'17"	41.86'	41.67'	S 72°07'05" W
C42	125.00'	8°38'08"	18.64'	18.82'	S 86°01'47" W
C43	25.00'	90°00'00"	39.27'	35.36'	N 45°20'50" E
C44	25.00'	90°00'00"	39.27'	35.36'	N 44°39'10" W
C45	25.00'	37°14'15"	16.25'	15.96'	S 71°43'42" W
C46	25.00'	63°02'48"	23.18'	22.36'	S 40°45'51" W
C47	50.00'	42°16'27"	36.89'	36.06'	S 20°47'22" E
C48	4.50'	162°00'55"	12.72'	8.89'	S 00°15'26" E
C49	45.00'	9°35'48"	7.54'	7.53'	S 85°32'56" W
C50	45.00'	8°56'57"	7.03'	7.02'	N 84°31'51" W
C51	4.50'	162°00'55"	12.72'	8.89'	N 00°57'05" E
C52	45.00'	8°23'17"	6.58'	6.58'	N 86°09'11" E
C53	45.00'	8°23'17"	6.58'	6.58'	S 85°27'32" E

MATCH LINE 'A'
 SEE SHEET 3 OF 4

DEED BOOK 79, PAGE 68
 DEED BOOK 69, PAGE 216