

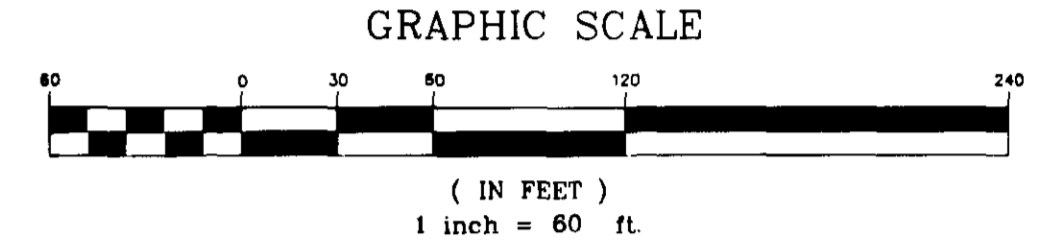
# FAITH LANDINGS

## SECTION 10, TOWNSHIP 28 SOUTH, RANGE 37 EAST CITY OF MELBOURNE, COUNTY OF BREVARD, FLORIDA.

PREPARED BY:  
**WILLIAM MOTT LAND SURVEYING INC.**  
 SATELLITE BEACH PROFESSIONAL CENTER  
 1275 SOUTH PATRICK DRIVE, SUITE H  
 SATELLITE BEACH, FLORIDA 32937-3955  
 PHONE (321) 773-4323  
 PROJECT NUMBER: 2030147  
 DRAWING NAME: FAITH LANDINGS.DWG  
 DRAWN BY: DANIEL D. GARNER P.S.M. 6189

NOTICE: THIS PLAT, AS RECORDED IN ITS GRAPHIC FORM, IS THE OFFICIAL DEPICTION OF THE SUBDIVIDED LANDS DESCRIBED HEREIN AND WILL IN NO CIRCUMSTANCES BE SUPPLANTED IN AUTHORITY BY ANY OTHER GRAPHIC OR DIGITAL FORM OF THE PLAT. THERE MAY BE ADDITIONAL RESTRICTIONS THAT ARE NOT RECORDED ON THIS PLAT THAT MAY BE FOUND IN THE PUBLIC RECORDS OF THIS COUNTY.

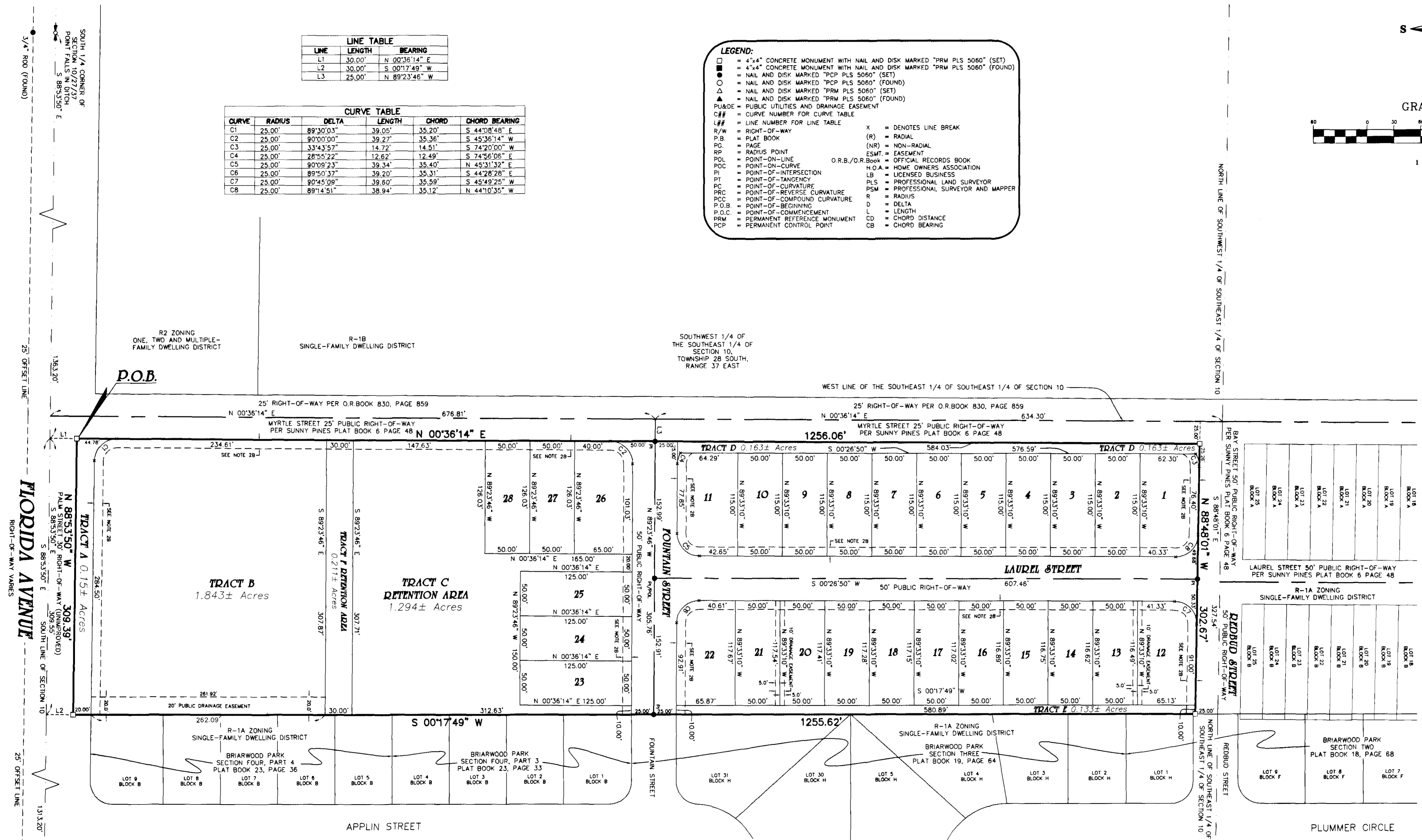
**NOTE:**  
 PRIOR TO THE RELEASE OF THE PERFORMANCE BOND,  
 ALL LOT CORNER MONUMENTATION WILL BE SET AS  
 1/2" IRON RODS WITH CAPS MARKED "LB 3608".



LINE	LENGTH	BEARING
L1	30.00'	N 00°36'14" E
L2	30.00'	S 00°17'49" W
L3	25.00'	N 89°23'46" W

CURVE	RADIUS	DELTA	LENGTH	CHORD	CHORD BEARING
C1	25.00'	89°30'03"	39.05'	35.20'	S 44°08'48" E
C2	25.00'	90°00'00"	39.27'	35.36'	S 45°36'14" W
C3	25.00'	33°43'57"	14.72'	14.51'	S 74°20'00" W
C4	25.00'	28°55'22"	12.62'	12.49'	S 74°56'06" E
C5	25.00'	90°09'23"	39.34'	35.40'	N 45°31'32" E
C6	25.00'	89°50'37"	39.20'	35.31'	S 44°28'28" E
C7	25.00'	90°45'09"	39.60'	35.59'	S 45°49'26" W
C8	25.00'	89°14'51"	38.94'	35.12'	N 44°10'35" W

- LEGEND:**
- = 4"x4" CONCRETE MONUMENT WITH NAIL AND DISK MARKED "PRM PLS 5060" (SET)
  - = 4"x4" CONCRETE MONUMENT WITH NAIL AND DISK MARKED "PRM PLS 5060" (FOUND)
  - = NAIL AND DISK MARKED "PCP PLS 5060" (SET)
  - = NAIL AND DISK MARKED "PCP PLS 5060" (FOUND)
  - △ = NAIL AND DISK MARKED "PRM PLS 5060" (SET)
  - ▲ = NAIL AND DISK MARKED "PRM PLS 5060" (FOUND)
  - PU&DE = PUBLIC UTILITIES AND DRAINAGE EASEMENT
  - C# = CURVE NUMBER FOR CURVE TABLE
  - L# = LINE NUMBER FOR LINE TABLE
  - R/W = RIGHT-OF-WAY
  - P.B. = PLAT BOOK
  - PC. = PAGE
  - RP. = RADIUS POINT
  - POL. = POINT-ON-LINE
  - POC. = POINT-ON-CURVE
  - PI. = POINT-OF-INTERSECTION
  - PT. = POINT-OF-TANGENCY
  - PC. = POINT-OF-CURVATURE
  - PRC. = POINT-OF-REVERSE CURVATURE
  - POC. = POINT-OF-COMPOUND CURVATURE
  - P.O.B. = POINT-OF-BEGINNING
  - P.O.C. = POINT-OF-COMMENCEMENT
  - PRM. = PERMANENT REFERENCE MONUMENT
  - PCP. = PERMANENT CONTROL POINT
  - X = DENOTES LINE BREAK
  - (R) = RADIAL
  - (NR) = NON-RADIAL
  - ESMT. = EASEMENT
  - O.R.B./O.R. BOOK = OFFICIAL RECORDS BOOK
  - H.O.A. = HOME OWNERS ASSOCIATION
  - LB = LICENSED BUSINESS
  - PLS = PROFESSIONAL LAND SURVEYOR
  - PSM = PROFESSIONAL SURVEYOR AND MAPPER
  - R = RADIUS
  - D = DELTA
  - L = LENGTH
  - CD = CHORD DISTANCE
  - CB = CHORD BEARING



FLORIDA AVENUE  
 RIGHT-OF-WAY VARIES

NORTH LINE OF SOUTHWEST 1/4 OF SOUTHEAST 1/4 OF SECTION 10

REBBUD STREET  
 50' PUBLIC RIGHT-OF-WAY

**P.O.C.**  
 SOUTHEAST CORNER OF  
 SECTION 10,  
 TOWNSHIP 28 SOUTH,  
 RANGE 37 EAST  
 NAIL AND DISK  
 (FOUND) NO ID.

