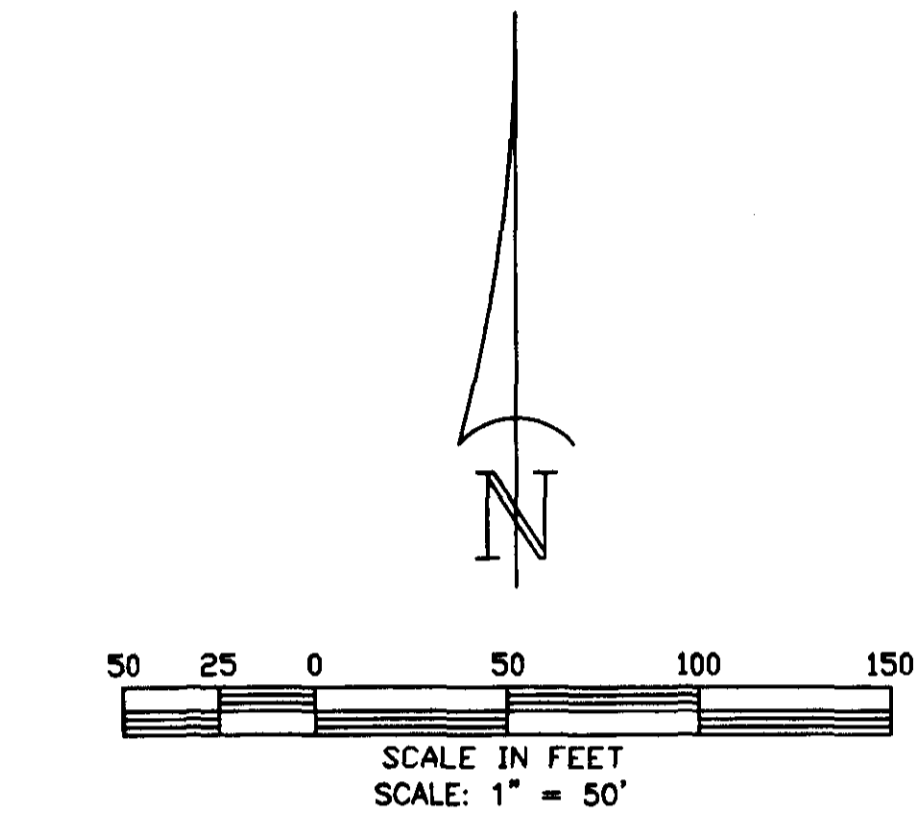
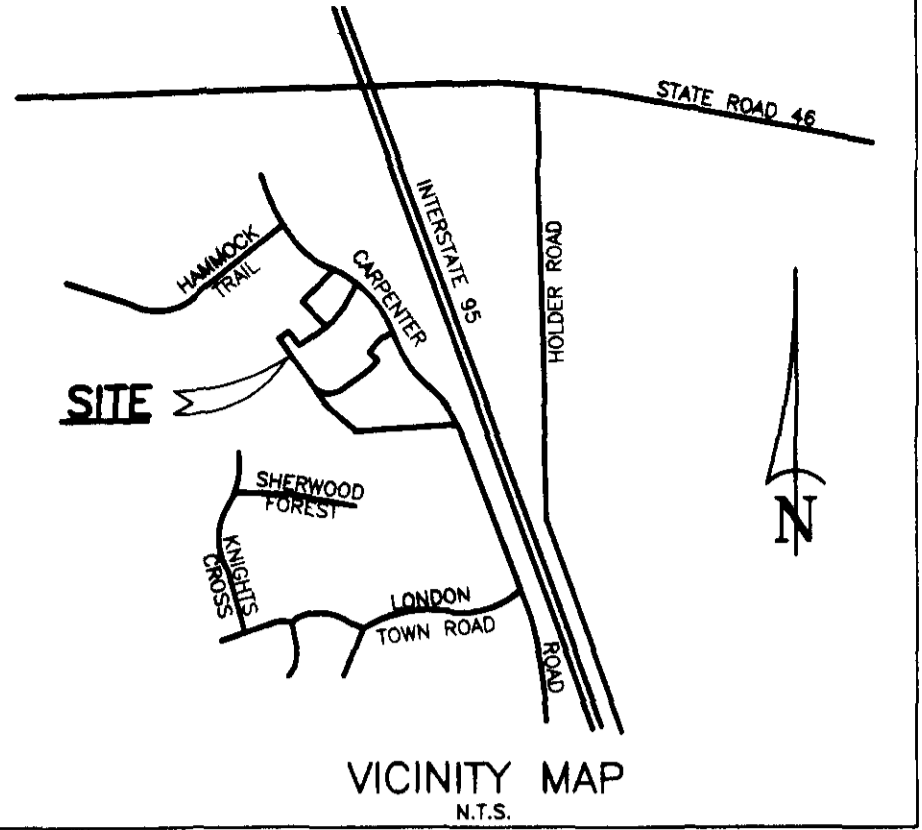
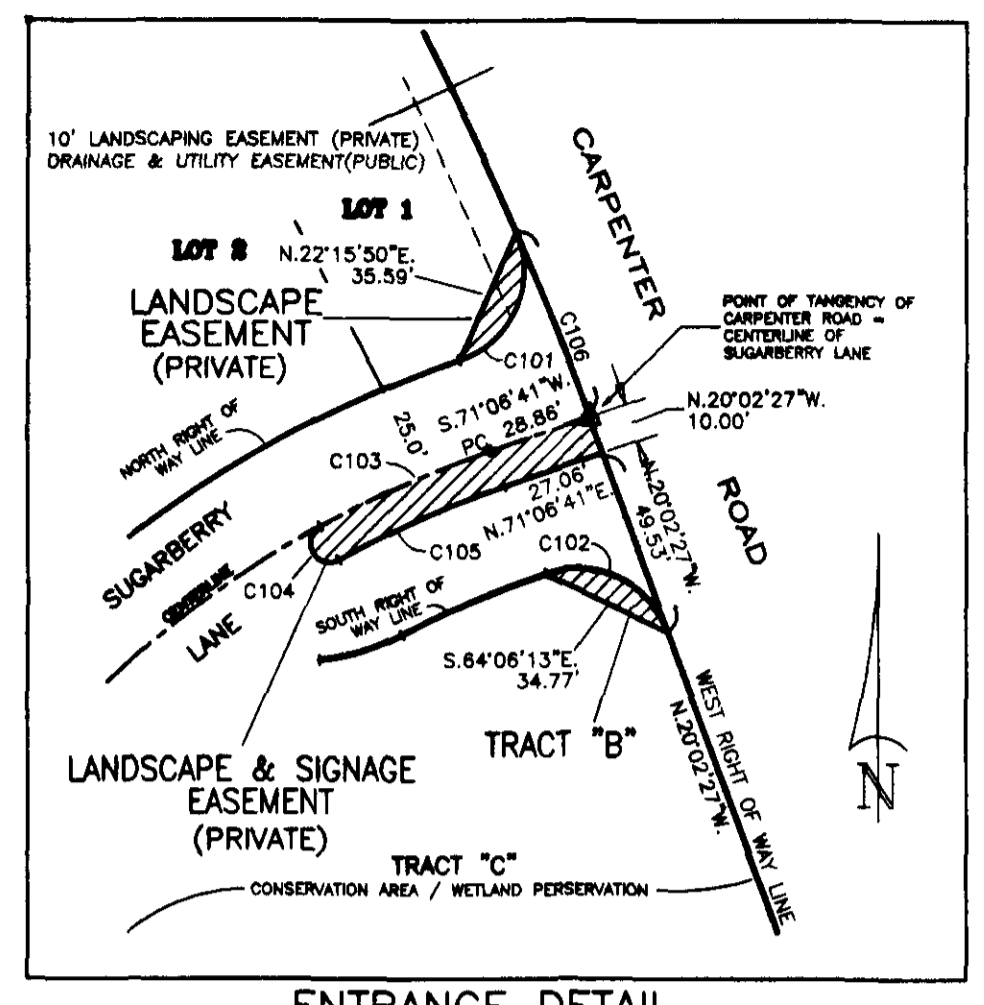
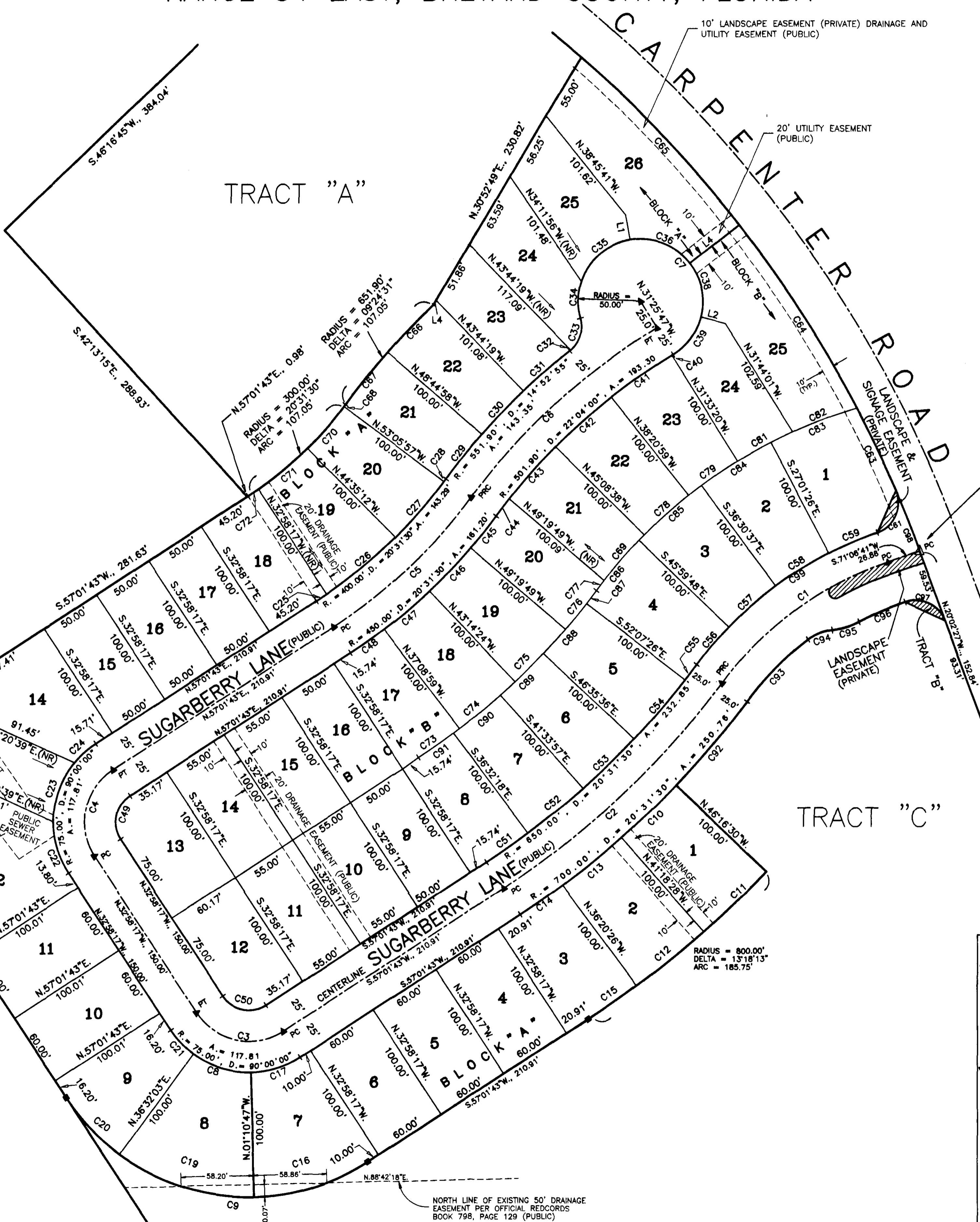


BIRCHWOOD FOREST

A SUBDIVISION LYING IN SECTION 13, TOWNSHIP 21 SOUTH,
RANGE 34 EAST, BREVARD COUNTY, FLORIDA



- LEGEND**
- INDICATES PERMANENT REFERENCE MONUMENT, A 4"x4" CONCRETE MONUMENT SET WITH DISK STAMPED "PRM PLS 2351".
 - ▲ INDICATES PERMANENT REFERENCE MONUMENT SET, DISK STAMPED "PRM PLS 2351" SET IN CONCRETE CURB.
 - INDICATES A 4"x4" CONCRETE MONUMENT FOUND WITH MARKING AS SHOWN.
 - ▲ INDICATES PERMANENT CONTROL POINT SET, A DISK STAMPED "PCP PLS 2351".
 - (NR) INDICATES NON-RADIAL LINE
 - PC INDICATES POINT OF CURVATURE
 - PT INDICATES POINT OF TANGENCY
 - PRC INDICATES POINT OF REVERSE CURVATURE
 - N.T.S. INDICATES NOT TO SCALE
 - R. INDICATES RADIUS
 - D. INDICATES DELTA
 - A. INDICATED ARC



ENTRANCE DETAIL CURVE DATA

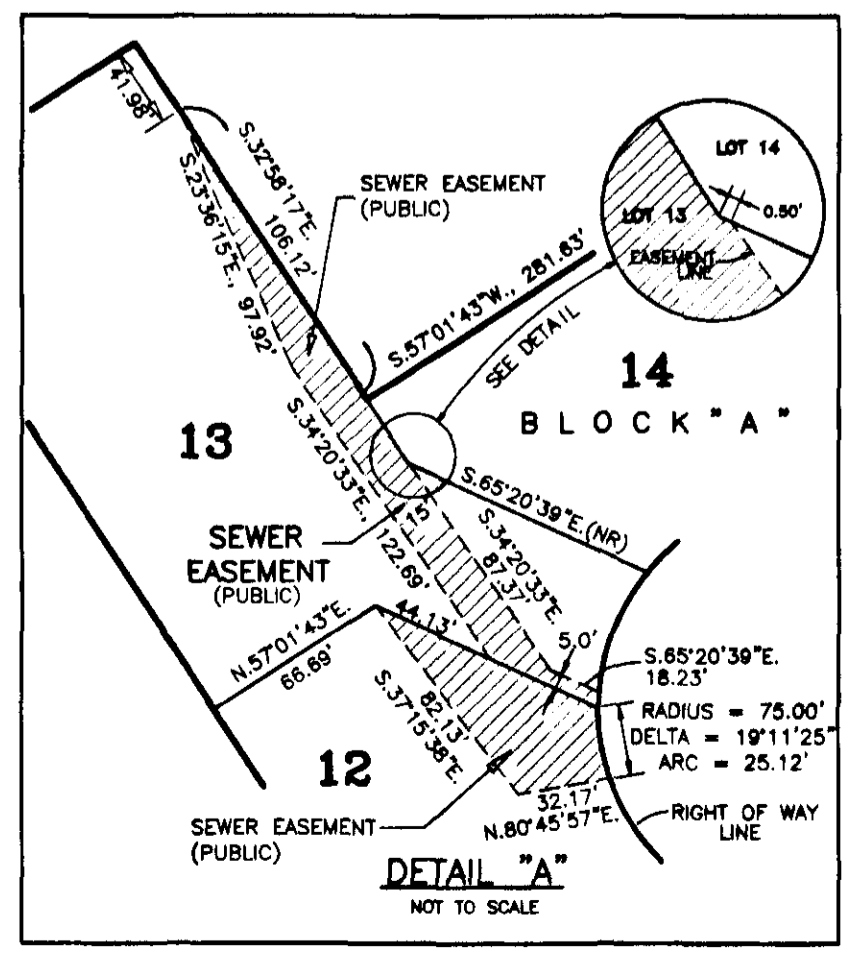
#	RADIUS	DELTA	DISTANCE	CHORD BEARING	CHORD
C101	25.00'	94°08'19"	41.08'	S 23°57'11" W.	36.61'
C102	25.00'	88°07'32"	38.45'	S 84°06'13" W.	34.77'
C103	276.90'	10°07'43"	48.95'	S 86°02'50" W.	48.89'
C104	5.00'	180°00'00"	15.71'	S 29°01'02" E.	10.00'
C105	266.90'	10°07'43"	47.18'	N 86°02'50" E.	47.12'
C106	967.00'	03°04'32"	51.91'	N 21°34'43" W.	51.90'

CURVE DATA

#	RADIUS	DELTA	DISTANCE	CHORD BEARING	CHORD
C1	276.90'	34°36'28"	167.25'	S 53°48'27" W.	164.72'
C2	675.00'	20°31'30"	241.80'	S 46°45'58" W.	240.51'
C3	50.00'	90°00'00"	78.54'	N 77°58'17" W.	70.71'
C4	50.00'	90°00'00"	78.54'	N 12°01'43" E.	70.71'
C5	425.00'	20°31'30"	152.25'	N 46°15'58" E.	151.43'
C6	526.90'	22°04'00"	202.93'	N 47°32'13" E.	201.68'
C7	50.00'	254°09'39"	221.80'	N 68°30'37" W.	79.78'
C8	75.00'	37°42'49"	49.37'	S 72°19'22" W.	48.48'
C9	175.00'	90°00'00"	274.89'	N 77°58'17" W.	247.49'
C10	700.00'	04°58'02"	60.69'	S 46°12'31" W.	69.33'
C11	800.00'	04°58'02"	69.36'	N 46°16'31" E.	60.67'
C12	800.00'	04°58'02"	69.36'	S 51°10'33" W.	69.33'
C13	700.00'	04°58'02"	60.69'	N 41°10'33" E.	60.67'
C14	700.00'	03°22'09"	41.16'	N 55°20'38" E.	41.16'
C15	800.00'	03°22'09"	47.04'	S 55°20'38" W.	47.04'
C16	175.00'	31°47'30"	97.10'	S 72°55'28" W.	95.86'
C17	75.00'	31°47'30"	41.62'	S 72°55'28" W.	41.08'
C18	175.00'	37°42'49"	115.19'	N 72°19'22" W.	113.12'
C19	175.00'	20°29'40"	62.80'	N 43°13'07" W.	62.26'
C20	175.00'	20°29'40"	62.80'	S 43°13'07" W.	62.26'
C21	75.00'	33°16'08"	43.55'	S 16°20'13" E.	42.94'
C22	75.00'	33°16'08"	43.55'	S 16°20'13" E.	42.94'
C23	75.00'	39°05'10"	51.16'	S 19°50'26" W.	50.18'
C24	75.00'	17°38'43"	23.10'	S 48°12'21" W.	23.01'
C25	400.00'	01°24'15"	9.80'	S 56°19'35" W.	9.80'
C26	400.00'	10°12'40"	71.29'	S 50°31'08" W.	71.19'
C27	400.00'	08°30'45"	59.43'	S 41°09'26" W.	59.37'
C28	400.00'	09°23'50"	59.52'	S 49°15'13" W.	55.80'
C29	551.90'	04°44'49"	45.72'	S 38°52'38" W.	45.71'
C30	551.90'	05°00'39"	48.27'	S 41°49'07" W.	48.25'
C31	551.90'	05°07'27"	49.36'	S 48°49'24" W.	49.34'
C32	25.00'	01°37'35"	0.71'	S 50°34'20" W.	0.71'
C33	25.00'	65°20'59"	28.51'	S 17°05'03" W.	26.99'
C34	50.00'	34°15'21"	29.89'	S 01°32'15" E.	29.45'
C35	50.00'	01°32'00"	53.70'	S 49°15'13" W.	51.48'
C36	50.00'	61°58'55"	54.09'	N 68°48'38" W.	51.48'
C37	50.00'	25°48'12"	22.52'	N 44°33'19" W.	22.23'
C38	50.00'	52°28'15"	45.79'	S 11°35'02" E.	44.21'
C39	50.00'	43°55'08"	38.33'	S 36°36'39" W.	37.40'
C40	501.90'	00°07'33"	1.10'	S 58°30'29" W.	1.10'
C41	501.90'	06°47'39"	59.52'	S 55°02'51" W.	59.48'
C42	501.90'	06°47'39"	59.52'	S 49°15'13" W.	59.48'
C43	50.00'	06°22'25"	55.83'	S 41°40'10" W.	55.80'
C44	501.90'	01°58'44"	17.34'	S 37°29'36" W.	17.34'
C45	450.00'	04°09'158"	45.72'	N 38°35'12" E.	32.71'
C46	450.00'	06°05'25"	47.83'	N 43°42'54" E.	47.81'
C47	450.00'	06°05'25"	47.83'	N 49°48'19" E.	47.81'
C48	450.00'	04°10'42"	32.82'	N 54°56'22" E.	32.81'
C49	25.00'	90°00'00"	39.27'	S 49°15'13" W.	35.36'
C50	15.00'	90°00'00"	39.27'	N 77°58'17" W.	35.36'
C51	650.00'	03°34'01"	40.47'	S 55°14'43" W.	40.46'
C52	650.00'	05°01'39"	57.04'	S 50°56'52" W.	57.02'
C53	650.00'	05°01'39"	57.04'	S 45°55'13" W.	57.02'
C54	650.00'	05°31'50"	62.74'	S 40°38'29" W.	62.72'
C55	650.00'	01°22'21"	15.57'	S 37°11'24" W.	15.57'
C56	301.90'	07°29'58"	39.52'	S 49°15'13" W.	39.49'
C57	301.90'	09°29'01"	49.99'	S 48°44'48" W.	49.93'
C58	301.90'	09°29'11"	49.99'	S 58°13'59" W.	49.93'
C59	301.90'	08°02'46"	42.40'	S 66°59'57" W.	42.36'
C60	967.00'	25°38'04"	432.64'	S 35°56'01" E.	429.64'
C61	25.00'	94°08'19"	41.08'	S 23°57'11" W.	36.61'
C62	25.00'	67°07'01"	29.29'	S 10°29'32" W.	27.64'
C63	967.00'	04°20'36"	73.30'	S 25°17'17" E.	73.29'
C64	952.00'	10°21'35"	174.85'	N 35°38'22" W.	174.61'
C65	952.00'	10°55'53"	184.50'	S 43°17'06" E.	184.22'
C66	651.90'	04°39'41"	53.04'	N 43°34'53" E.	53.03'
C67	651.90'	04°44'49"	54.01'	N 38°52'38" E.	53.99'
C68	300.00'	00°23'50"	2.08'	N 36°42'13" E.	2.08'
C69	401.90'	06°55'05"	48.53'	N 41°23'50" E.	48.50'
C70	300.00'	08°30'45"	39.52'	N 41°09'26" E.	44.53'
C71	300.00'	09°29'11"	51.01'	N 48°44'48" E.	50.98'
C72	300.00'	01°52'21"	9.80'	N 56°05'33" E.	9.80'
C73	550.00'	04°10'42"	40.11'	N 54°56'22" E.	40.10'
C74	550.00'	06°05'25"	58.46'	N 49°48'19" E.	58.44'
C75	550.00'	06°05'25"	58.46'	N 43°42'54" E.	58.44'
C76	550.00'	04°09'58"	39.99'	N 36°35'12" E.	39.98'
C77	401.90'	01°26'04"	10.06'	N 37°13'16" E.	10.06'
C78	401.90'	08°47'39"	47.86'	N 48°15'12" E.	47.83'
C79	401.90'	06°47'39"	47.86'	N 55°02'51" E.	47.83'
C80	401.90'	06°11'08"	43.39'	N 52°40'34" E.	43.37'
C81	401.90'	07°08'35"	50.11'	N 62°00'57" E.	50.07'
C82	401.90'	07°50'31"	55.01'	N 69°30'31" E.	54.96'
C83	401.90'	08°55'34"	62.61'	N 85°21'19" E.	62.55'
C84	401.90'	09°29'11"	66.54'	N 58°13'59" E.	66.47'
C85	401.90'	09°29'11"	66.54'	N 48°44'48" E.	66.47'
C86	401.90'	07°29'59"	52.61'	N 40°15'13" E.	52.57'
C87	550.00'	01°22'21"	13.17'	N 37°11'23" E.	13.17'
C88	550.00'	05°31'50"	53.09'	N 40°38'29" E.	53.07'
C89	550.00'	05°01'39"	48.26'	N 45°55'33" E.	48.25'
C90	550.00'	05°01'39"	48.26'	N 50°56'52" E.	48.25'
C91	550.00'	03°34'01"	34.24'	N 55°14'43" E.	34.24'
C92	700.00'	07°13'17"	98.22'	S 40°08'52" W.	95.17'
C93	251.90'	15°56'10"	70.06'	S 44°28'18" W.	69.84'
C94	38.00'	31°23'44"	20.82'	S 68°08'15" W.	20.56'
C95	60.00'	21°39'35"	22.68'	S 73°00'19" W.	22.55'
C96	241.90'	09°44'41"	41.14'	S 67°02'53" W.	41.09'
C97	25.00'	88°02'20"	38.41'	N 64°03'37" W.	34.75'
C98	967.00'	03°04'32"	51.91'	N 21°34'43" W.	51.90'
C99	301.90'	34°31'07"	181.88'	S 46°45'58" W.	249.42'

LINE TABLE

#	BEARING	DISTANCE
L1	N 09°48'05" W.	20.00'
L2	N 75°20'55" W.	20.00'
L3	S 52°10'50" E.	50.00'
L4	N 30°52'50" E.	4.12'



Campbell SURVEYING AND MAPPING
OF BREVARD, INC.

3525 N. COURTENAY PARKWAY - SUITE 1
MAILING ADDRESS: P.O. BOX 542148
MERRITT ISLAND, FL 32954 PHONE (321) 453-5820
E-MAIL: SURVEY1@DIGITAL.NET WEB SITE: CAMPBELLSURVEYING.COM
BUSINESS LICENSE: LB 6464

Dated of plat: 6/06/03