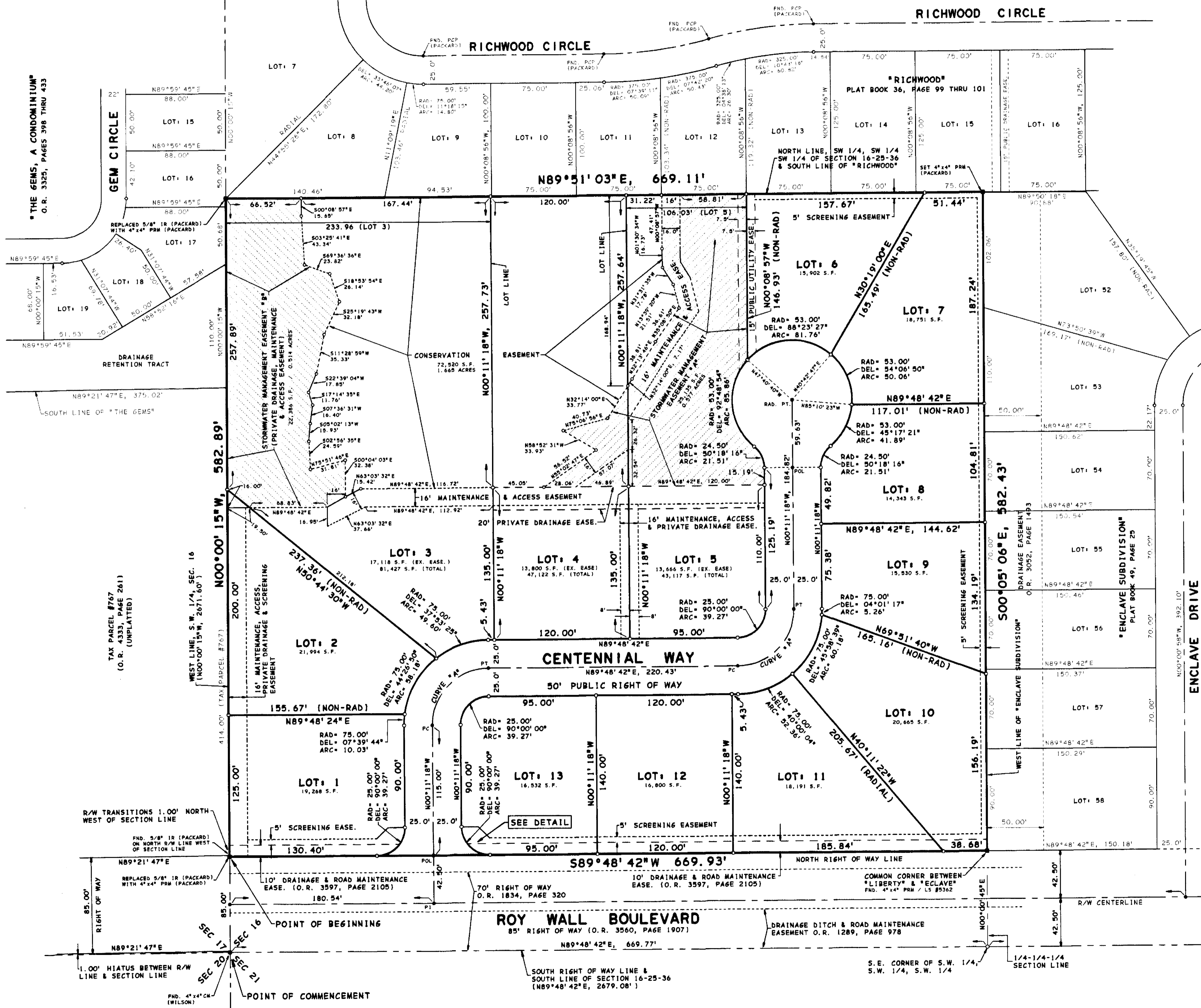


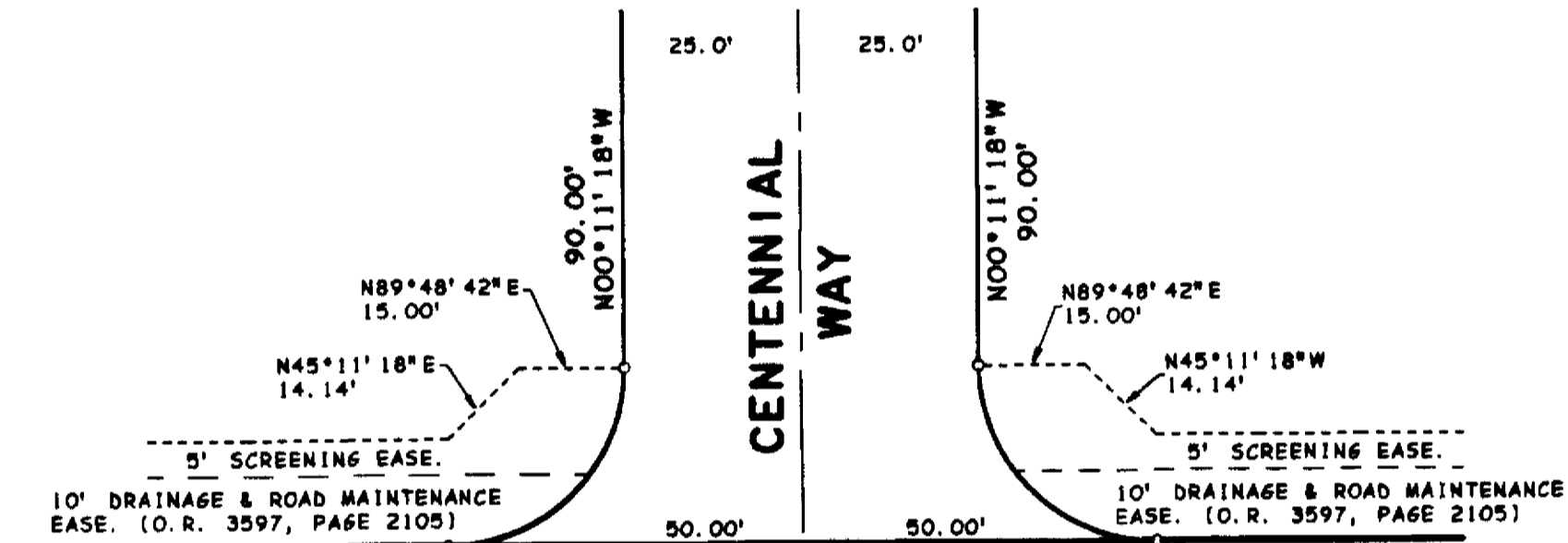
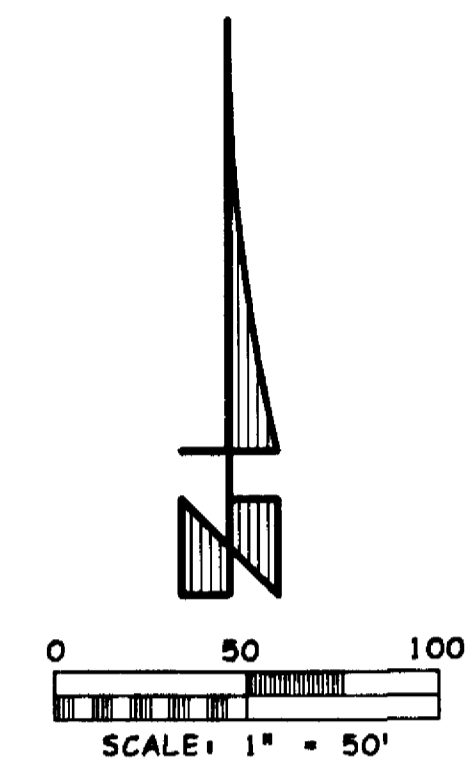
LIBERTY SUBDIVISION

A SUBDIVISION LYING IN SECTION 16, TOWNSHIP 25 SOUTH, RANGE 36 EAST, CITY OF ROCKLEDGE, BREVARD COUNTY, FLORIDA.

WEST 1/4 CORNER, SECTION 16-25-36
 (IN CANAL - LOCATION DETERMINED BY
 *BUCKINGHAM AT LEVITT PARK, SECTION
 4-8* (PLAT BOOK 20, PAGE 146)



CENTERLINE CURVE "A"
 RAD= 50.00'
 DEL= 90°00'00"
 ARC= 78.54'
 TAN= 50.00'
 BEARING= N44°48'42"
 CHORD= 70.71'



NOTES:
 LOTS 3, 4 AND 5 EXTEND FROM CENTENNIAL WAY TO THE SOUTH LINE OF *RICHWOOD*.
 THESE LOTS ARE SUBJECT TO EASEMENTS DEPICTED WITHIN THESE LOTS (I.E.
 *STORMWATER MANAGEMENT EASEMENTS 'A' AND 'B', *MAINTENANCE AND ACCESS
 EASEMENTS*, *PUBLIC UTILITY EASEMENTS*, *PRIVATE DRAINAGE EASEMENTS, ETC.).

FOR CLARITY:
 [Symbol] = LIMITS OF STORMWATER MANAGEMENT EASEMENT *A*
 [Symbol] = LIMITS OF STORMWATER MANAGEMENT EASEMENT *B*

