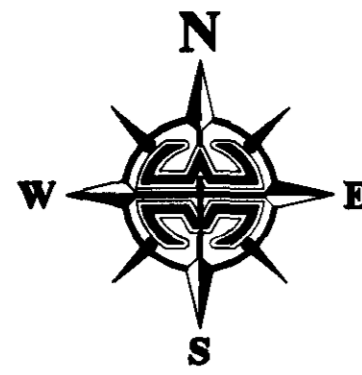
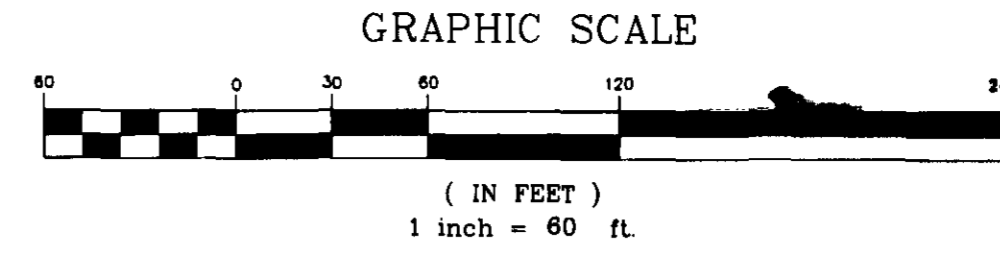


SATELLITE BEACH PROFESSIONAL CENTER
 1275 SOUTH PATRICK DRIVE, SUITE H
 SATELLITE BEACH, FLORIDA, 32937-3955
 PHONE (321) 773-4321
 PROJECT NUMBER: 2030076
 DRAWING NAME: HAMMOCK L. WEST PH2.DWG
 DRAWN BY: DANIEL D. GARNER P.S.M. 6189



HAMMOCK LAKES WEST PHASE TWO

A REPLAT OF A PORTION OF LOTS 27, 28 AND 29
 FLORIDA INDIAN RIVER LAND COMPANY, PLAT BOOK 1, PAGE 164
 SECTION 18, TOWNSHIP 28 SOUTH, RANGE 37 EAST
 CITY OF WEST MELBOURNE, COUNTY OF BREVARD, FLORIDA.



NOTICE: THIS PLAT, AS RECORDED IN ITS GRAPHIC FORM, IS THE OFFICIAL DEPICTION OF THE SUBDIVIDED LANDS DESCRIBED HEREIN AND WILL IN NO CIRCUMSTANCES BE SUPPLANTED IN AUTHORITY BY ANY OTHER GRAPHIC OR DIGITAL FORM OF THE PLAT. THERE MAY BE ADDITIONAL RESTRICTIONS THAT ARE NOT RECORDED ON THIS PLAT THAT MAY BE FOUND IN THE PUBLIC RECORDS OF THIS COUNTY.

CURVE TABLE				
CURVE RADIUS	DELTA	LENGTH	CHORD	CHORD BEARING
C1	201.11'	39°47'21"	139.66'	S 22°46'35" W
C2	420.00'	33°35'37"	246.23'	S 25°39'58" W
C3	47.88'	76°46'57"	64.16'	S 90°42'33" W
C4	35.00'	105°27'18"	64.42'	S 55°37'29" W
C5	175.00'	66°23'37"	202.79'	S 05°32'09" E
C6	85.00'	101°41'44"	150.87'	S 13°53'42" E
C7	42.57'	58°33'47"	43.51'	S 13°53'42" E
C8	195.00'	74°52'52"	254.85'	S 23°10'12" W
C9	74.99'	70°33'01"	92.34'	S 69°00'25" W
C10	50.00'	58°37'17"	51.16'	S 44°32'26" W
C11	365.00'	22°19'26"	142.21'	S 10°28'41" W
C12	25.00'	90°00'00"	39.27'	S 44°18'58" W
C13	50.00'	90°00'00"	78.54'	S 44°18'58" W
C14	50.00'	90°00'00"	78.54'	S 44°18'58" W
C15	50.00'	45°21'52"	58.38'	S 21°59'54" E
C16	50.00'	90°00'00"	78.54'	S 44°18'58" W
C17	75.00'	26°54'14"	35.22'	S 14°08'09" W
C18	75.00'	45°54'32"	60.59'	S 50°32'33" W
C19	75.00'	17°11'13"	22.50'	S 82°05'26" W
C20	75.00'	42°35'58"	55.76'	S 45°49'59" W
C21	75.00'	47°24'02"	62.05'	S 45°49'59" W
C22	50.00'	45°21'52"	39.59'	S 21°59'54" E
C23	25.00'	48°11'23"	21.03'	S 68°46'31" E
C24	50.00'	11°44'02"	9.80'	S 79°29'11" W
C25	50.00'	71°27'10"	62.35'	S 45°54'35" W
C26	175.00'	5°56'52"	18.17'	S 41°42'24" W
C27	175.00'	34°29'49"	105.37'	S 27°25'50" W
C28	50.00'	57°51'40"	50.49'	S 18°44'50" E
C29	175.00'	57°51'40"	176.73'	S 18°44'50" E
C30	50.00'	57°51'40"	50.49'	S 18°44'50" E
C31	175.00'	57°51'40"	176.73'	S 18°44'50" E

CURVE RADIUS	DELTA	LENGTH	CHORD	CHORD BEARING
C32	175.00'	107°39'31"	328.82'	S 81°29'25" E
C33	50.00'	77°58'31"	68.04'	S 33°28'33" E
C34	175.00'	29°46'50"	90.96'	S 59°43'58" E
C35	25.00'	15°24'09"	6.72'	S 04°11'31" W
C36	25.00'	32°47'14"	14.31'	S 28°17'13" W
C37	100.00'	35°52'18"	62.61'	S 26°44'41" E
C38	100.00'	9°29'34"	16.57'	S 04°03'45" E
C39	25.00'	90°00'00"	39.27'	S 44°18'58" W
C40	25.00'	90°00'00"	39.27'	S 44°18'58" W
C41	75.00'	12°34'54"	16.47'	S 06°58'29" E
C42	200.00'	12°34'54"	43.92'	S 06°58'29" E
C43	200.00'	22°36'45"	78.93'	S 11°59'25" E
C44	75.00'	48°06'57"	60.37'	S 36°19'25" E
C45	200.00'	48°06'57"	160.97'	S 36°19'25" E
C46	200.00'	67°23'15"	235.23'	S 56°58'25" E
C47	75.00'	31°18'08"	40.97'	S 75°01'58" E
C48	200.00'	31°18'08"	109.27'	S 75°01'58" E
C49	25.00'	90°00'00"	39.27'	S 44°18'58" W
C50	25.00'	90°00'00"	39.27'	S 44°18'58" W
C51	25.00'	90°00'00"	39.27'	S 44°18'58" W
C52	195.00'	53°55'33"	193.53'	S 83°01'08" W
C53	195.00'	20°52'20"	71.32'	S 59°32'26" W
C54	201.11'	11°21'49"	39.88'	S 08°33'49" E
C55	201.11'	28°25'31"	99.77'	S 88°27'30" E
C56	50.00'	73°45'04"	64.36'	S 00°41'02" W
C57	75.00'	81°42'29"	106.96'	S 44°58'56" E
C58	100.00'	100°22'20"	175.18'	S 54°18'52" E
C59	75.00'	44°46'04"	58.60'	S 82°07'00" W
C60	100.00'	76°54'05"	134.22'	S 21°16'56" W
C61	25.00'	79°00'36"	34.47'	S 22°20'11" E
C62	190.00'	10°01'51"	33.26'	S 18°16'52" E

LINE	LENGTH	BEARING
L1	34.39'	S 71°38'52" W
L2	90.27'	S 40°56'56" E
L3	27.48'	S 68°46'34" W
L4	100.37'	S 21°38'24" W
L5(R)	50.00'	S 00°41'02" E
L6(R)	50.00'	S 89°18'58" W
L7	48.97'	S 00°41'02" W
L8	3.60'	S 89°08'04" W
L9	163.03'	S 85°50'11" E
L10	63.43'	S 59°43'58" E
L11	29.67'	S 76°14'49" E
L12	17.55'	S 41°18'18" E
L13	56.14'	S 47°11'17" E
L14	55.34'	S 13°15'30" W
L15	34.61'	S 73°01'12" E
L16	31.64'	S 67°13'34" E
L17	68.56'	S 37°26'49" W
L18	30.85'	S 61°08'27" E
L19	41.09'	S 44°17'19" E
L20	65.78'	S 84°44'16" E
L21	40.04'	S 35°49'57" E
L22	59.05'	S 83°35'15" E
L23	44.42'	S 88°58'11" E
L24	20.61'	S 48°57'59" E
L25	76.23'	S 52°19'30" W
L26	11.99'	S 64°23'04" E
L27	45.88'	S 30°26'41" E
L28	37.36'	S 61°58'18" E
L29	16.70'	S 82°53'02" E
L30	21.79'	S 57°04'33" E

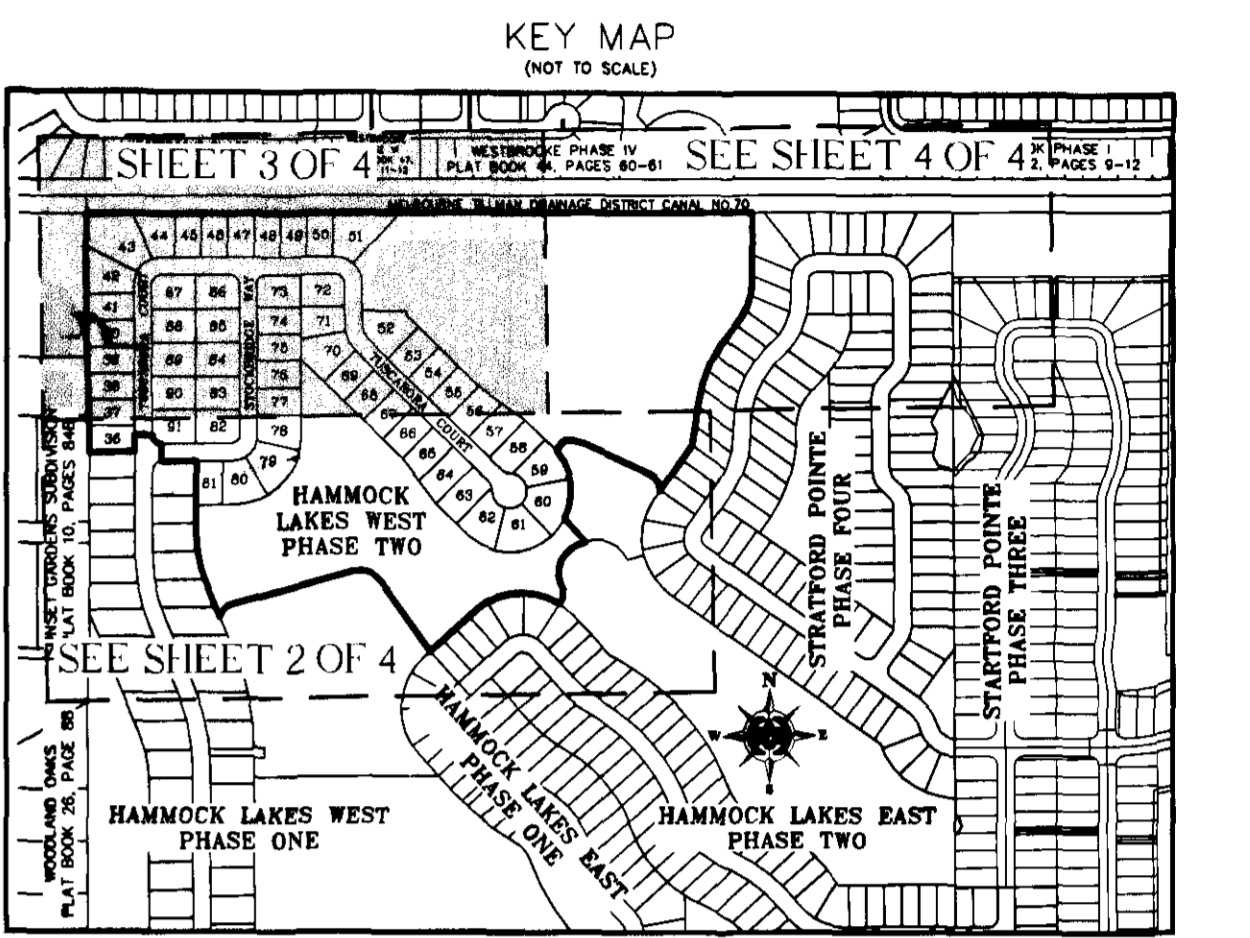
LINE	LENGTH	BEARING
L31	59.31'	S 75°17'43" E
L32	70.32'	S 59°43'58" E
L33	74.80'	S 16°32'00" E
L34	37.28'	S 18°12'53" W
L35	72.44'	S 35°25'57" W
L36	43.22'	S 47°11'53" W
L37	81.34'	S 72°16'59" W
L38	61.63'	S 57°11'47" W
L39	51.94'	S 08°49'44" W
L40	73.00'	S 32°19'15" W
L41	39.29'	S 15°11'04" E
L42	13.99'	S 38°37'16" W
L43	37.51'	S 77°10'48" W
L44	26.23'	S 50°00'30" W
L45	50.77'	S 77°44'19" W
L46	97.20'	S 75°15'05" W
L47	45.18'	S 60°20'07" W
L48	48.41'	S 87°52'22" W
L49	92.49'	S 87°14'55" W
L50	38.30'	S 71°28'46" W
L51	40.37'	S 31°38'55" W
L52	34.38'	S 30°57'23" W
L53	34.95'	S 32°33'23" W
L54	20.61'	S 17°56'17" E
L55	76.23'	S 52°19'30" W
L56	11.99'	S 64°23'04" E
L57	45.88'	S 30°26'41" E
L58	37.36'	S 61°58'18" E
L59	16.70'	S 82°53'02" E
L60	31.54'	S 34°37'31" E

LINE	LENGTH	BEARING
L61	22.01'	S 47°25'21" E
L62	25.74'	S 46°10'44" E
L63	45.15'	S 73°04'14" E
L64	21.56'	S 03°42'49" E
L65	34.06'	S 30°56'20" E
L66	39.06'	S 78°16'20" E
L67	31.28'	S 82°37'28" E
L68	29.08'	S 28°34'16" E
L69	92.62'	S 71°38'52" E
L70	63.36'	S 72°42'37" E
L71	37.88'	S 56°29'45" E
L72	54.70'	S 74°49'10" E
L73	30.12'	S 39°19'41" E
L74	26.32'	S 85°32'08" E
L75	29.22'	S 01°59'08" W
L76	43.83'	S 33°13'54" W
L77	67.88'	S 15°30'14" W
L78	29.10'	S 08°03'26" W
L79	37.64'	S 43°06'28" E
L80	73.76'	S 33°48'02" E
L81	24.49'	S 78°31'31" E
L82	52.96'	S 07°18'16" E
L83	109.89'	S 05°45'16" E
L84	23.65'	S 17°56'17" E
L85	53.71'	S 30°14'07" E
L86	59.31'	S 30°26'41" E
L87	50.44'	S 57°04'33" E
L88	28.34'	S 13°54'18" E
L89	47.73'	S 49°06'22" E
L90	12.96'	S 69°45'40" E

LINE	LENGTH	BEARING
L91	7.59'	S 00°41'02" E
L92	15.89'	S 63°16'21" W
L93	32.79'	S 44°10'51" W
L94	44.70'	S 34°51'18" W
L95	41.49'	S 13°41'23" W
L96	47.26'	S 05°58'10" W
L97	33.65'	S 14°35'21" E
L98	47.13'	S 58°14'55" E
L99	24.47'	S 08°50'06" W
L100	17.75'	S 63°01'30" E
L101	28.59'	S 17°22'26" E
L102	10.66'	S 87°39'37" E
L103	156.98'	S 87°39'37" E
L104	505.42'	S 89°38'45" E
L105	297.86'	S 88°34'35" E
L106	45.25'	S 66°57'28" E

LEGEND:

- = 4"x4" CONCRETE MONUMENT WITH NAIL AND DISK MARKED "PRM PLS 5060" (SET)
- = 4"x4" CONCRETE MONUMENT WITH NAIL AND DISK MARKED "PRM PLS 5060" (FOUND)
- = NAIL AND DISK MARKED "PCP PLS 5060" (SET)
- = NAIL AND DISK MARKED "PCP PLS 5060" (FOUND)
- ▲ = NAIL AND DISK MARKED "PRM PLS 5060" (SET)
- ▲ = NAIL AND DISK MARKED "PRM PLS 5060" (FOUND)
- P.U. & D.E. = PUBLIC UTILITIES AND DRAINAGE EASEMENT
- C# = CURVE NUMBER FOR CURVE TABLE
- L# = LINE NUMBER FOR LINE TABLE
- R/W = RIGHT-OF-WAY
- P.B. = PLAT BOOK
- P.C. = PAGE
- RP = RADIUS POINT
- POL = POINT-ON-LINE
- POC = POINT-ON-CURVE
- PI = POINT-OF-INTERSECTION
- PT = POINT-OF-TANGENCY
- PC = POINT-OF-CURVATURE
- PRC = POINT-OF-REVERSE CURVATURE
- PCC = POINT-OF-COMPOUND CURVATURE
- P.O.B. = POINT-OF-BEGINNING
- P.O.C. = POINT-OF-COMMENCEMENT
- PRM = PERMANENT REFERENCE MONUMENT
- PCP = PERMANENT CONTROL POINT
- (R) = RADIAL
- (NR) = NON-RADIAL
- ESMT = EASEMENT
- H.O.A. = HOME OWNERS ASSOCIATION
- LB = LICENSED BUSINESS
- PLS = PROFESSIONAL LAND SURVEYOR
- PSM = PROFESSIONAL SURVEYOR AND MAPPER
- R = RADIUS
- D = DELTA
- L = LENGTH
- CD = CHORD DISTANCE
- CB = CHORD BEARING



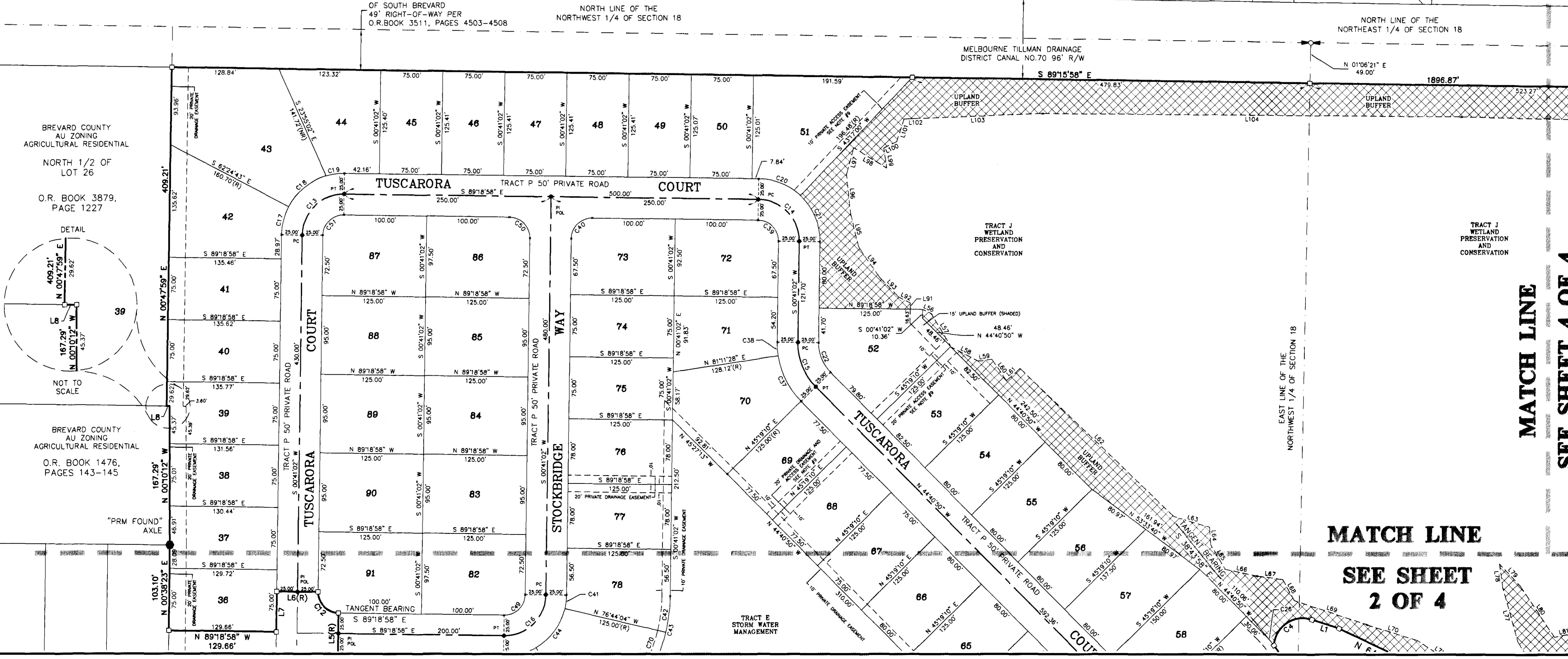
WESTBROOKE PHASE VII
 PLAT BOOK 48, PAGES 91-94

WEST MELBOURNE
 R1B ZONING
 SINGLE FAMILY
 RESIDENTIAL DISTRICT

WESTBROOKE PHASE VI
 PLAT BOOK 47, PAGES 11-12

WEST MELBOURNE
 R1B ZONING
 SINGLE FAMILY
 RESIDENTIAL DISTRICT

WESTBROOKE PHASE IV
 PLAT BOOK 44, PAGES 60-61



MATCH LINE
 SEE SHEET 4 OF 4

MATCH LINE
 SEE SHEET 2 OF 4