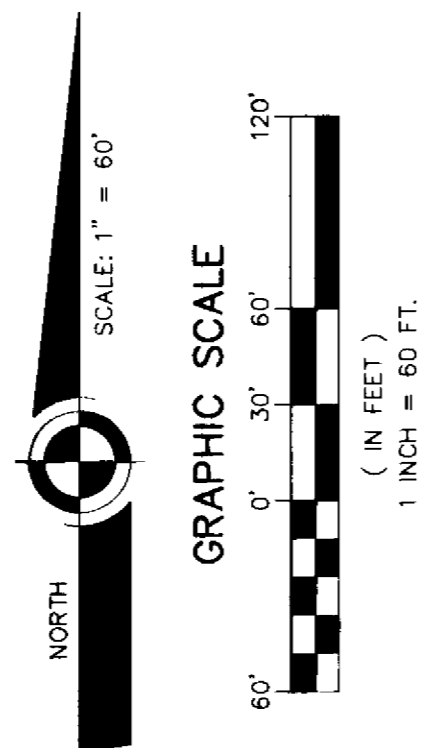


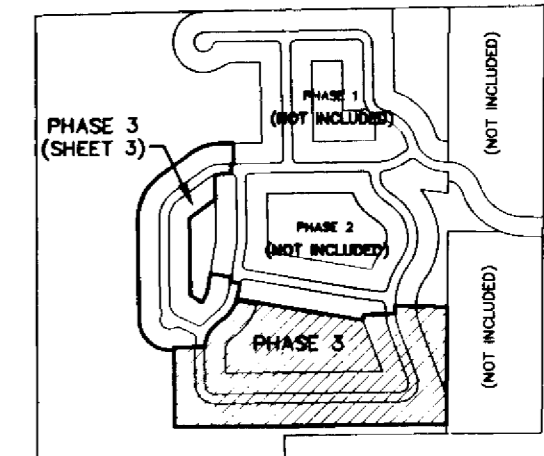
Deer Lakes Phase 3

A SUBDIVISION LYING IN SECTION 25, TOWNSHIP 26 SOUTH, RANGE 36 EAST, BREVARD COUNTY, FLORIDA.

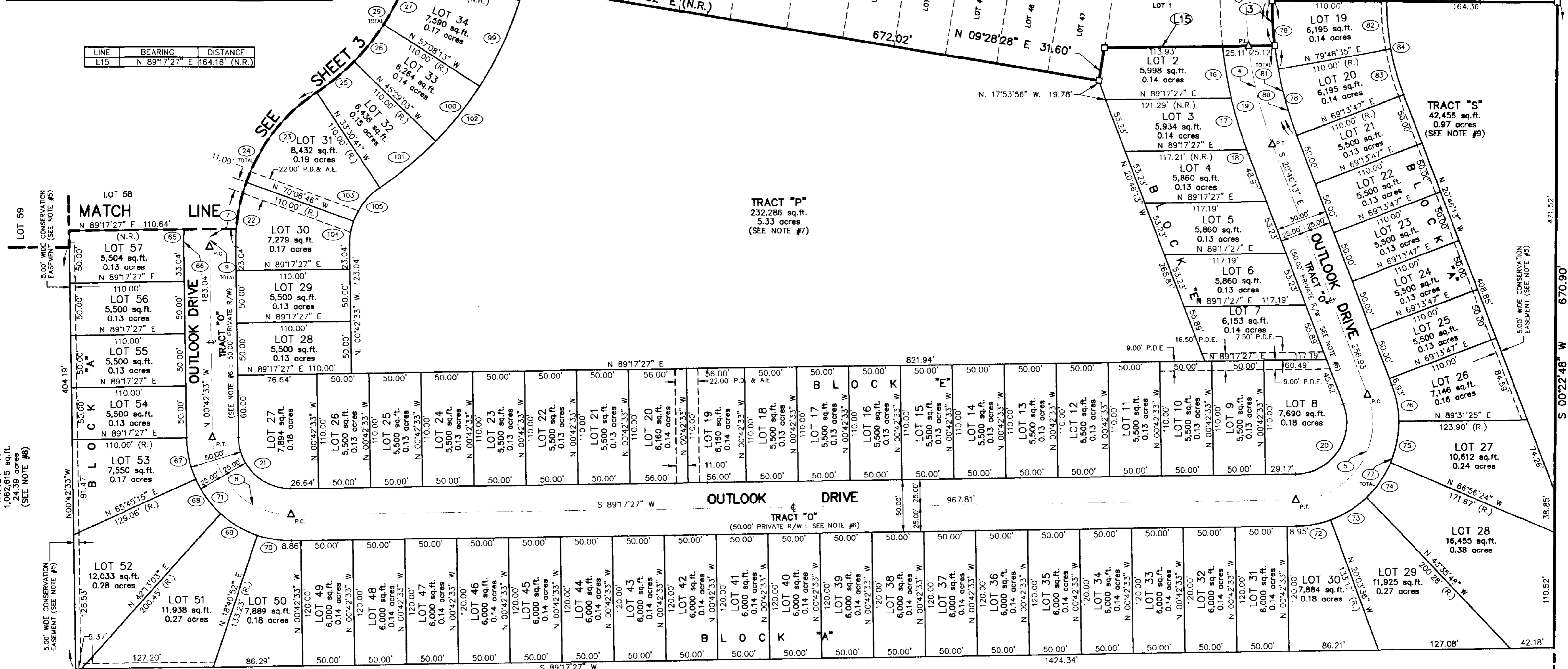
CURVE	RADIUS	DELTA	LENGTH	TANGENT	CHORD	BEARING
3	360.00	06°56'24"	43.61'	21.83'	43.58'	N 03°04'48" W
4	410.00	21°02'37"	150.58'	76.15'	149.74'	S 10°14'55" E
5	75.00	110°03'40"	144.07'	107.23'	122.92'	S 34°15'37" W
6	75.00	90°00'00"	117.81'	75.00'	106.07'	N 45°42'33" W
7	200.00	25°57'17"	90.60'	46.09'	89.83'	N 12°16'05" E
9	200.00	57°11'52"	199.66'	109.04'	191.47'	N 27°53'23" E
16	410.00	07°04'21"	50.61'	25.34'	50.58'	S 09°21'19" E
17	410.00	07°16'04"	52.01'	26.04'	51.97'	S 16°32'31" E
18	410.00	00°35'40"	4.25'	2.13'	4.25'	S 20°28'23" E
19	410.00	14°56'05"	106.87'	53.74'	106.57'	S 13°18'11" E
20	50.00	110°03'40"	96.05'	71.49'	81.95'	S 34°15'37" W
21	50.00	90°00'00"	78.54'	50.00'	70.71'	N 45°42'33" W
22	175.00	20°35'47"	62.91'	31.80'	62.57'	N 09°35'20" E
23	175.00	36°36'05"	111.79'	57.88'	109.90'	N 38°11'16" E
24	175.00	57°11'52"	174.70'	95.41'	167.54'	N 27°53'23" E
25	225.00	11°58'22"	47.02'	23.59'	46.93'	N 50°30'08" E
26	225.00	11°39'10"	45.76'	22.96'	45.68'	N 38°41'22" E
27	225.00	11°49'40"	46.45'	23.31'	46.36'	N 26°56'57" E
28	225.00	03°52'30"	15.22'	7.61'	15.21'	N 19°03'52" E
29	225.00	47°00'51"	184.62'	97.87'	179.48'	N 32°58'53" E
65	225.00	04°19'24"	16.98'	8.49'	16.97'	S 01°27'09" W
66	225.00	14°25'03"	56.62'	28.46'	56.47'	S 06°29'59" W
67	100.00	23°32'12"	41.08'	20.83'	40.79'	S 12°28'39" E
68	100.00	23°32'12"	41.08'	20.83'	40.79'	S 36°00'51" E
69	100.00	23°32'12"	41.08'	20.83'	40.79'	S 59°33'02" E
70	100.00	19°23'25"	33.84'	17.08'	33.68'	S 81°00'51" E
71	100.00	90°00'00"	157.08'	100.00'	141.42'	S 45°42'33" W
72	100.00	19°21'03"	33.77'	17.05'	33.61'	N 79°36'55" E
73	100.00	23°32'12"	41.08'	20.83'	40.79'	N 58°10'18" E
74	100.00	23°20'36"	40.74'	20.66'	40.46'	N 34°43'54" E
75	100.00	23°32'12"	41.08'	20.83'	40.79'	N 11°17'50" E
76	100.00	201°7'38"	35.42'	17.90'	35.23'	N 10°37'24" W
77	100.00	110°03'40"	192.09'	142.98'	163.89'	N 34°15'37" E
78	360.00	10°34'49"	66.48'	33.33'	66.38'	N 15°28'49" W
79	360.00	10°34'49"	66.48'	33.33'	66.38'	N 04°54'00" W
80	360.00	14°13'13"	89.35'	44.91'	89.12'	N 13°39'37" W
81	360.00	21°09'37"	132.95'	67.24'	132.20'	N 10°11'25" W
82	250.00	10°34'49"	46.16'	23.15'	46.10'	S 04°54'00" W
83	250.00	10°34'49"	46.16'	23.15'	46.10'	S 15°28'49" E
84	250.00	21°09'37"	92.33'	46.70'	91.81'	S 10°11'25" E
99	335.00	15°39'11"	91.52'	46.05'	91.24'	S 25°02'12" W
100	335.00	11°39'10"	68.13'	34.18'	68.01'	S 38°41'22" W
101	335.00	11°58'22"	70.00'	35.13'	69.88'	S 50°30'08" W
102	335.00	39°16'42"	229.66'	119.55'	225.18'	S 36°50'58" W
103	65.00	36°36'05"	41.52'	21.50'	40.82'	S 38°11'16" W
104	65.00	20°35'47"	23.37'	11.81'	23.24'	S 09°35'20" W
105	65.00	57°11'52"	64.89'	35.44'	62.23'	S 27°53'23" W



- LEGEND**
- FND. FOUND
 - REC. RECOVERED PREVIOUSLY
 - C.M. CONCRETE MONUMENT
 - P.K./W. PARKER-KAYLON NAIL
 - P.R.M. PERMANENT REFERENCE MONUMENT
 - L.B. LICENSED BUSINESS NUMBER
 - R/W RIGHT OF WAY
 - P.B. PLAT BOOK
 - LS LAND SURVEYOR
 - P.C. POINT OF CURVEATURE
 - P.T. POINT OF TANGENCY
 - P.R.C. POINT OF REVERSE CURVE
 - P.C.C. POINT OF COMPOUND CURVE
 - P.I. POINT OF INTERSECTION
 - R.P. RADIUS POINT
 - (N.R.) NON-RADIAL
 - (R.) RADIAL
 - (O.R.B.) OFFICIAL RECORDS BOOK
 - PG. PAGE
 - (TYP.) TYPICAL
 - (N.T.S.) NOT TO SCALE
 - (N.I.) NOT INCLUDED
 - (L.D.) LINE DATA (SEE LINE TABLE)
 - (C.D.) CURVE DATA (SEE CURVE TABLE)
 - (R.) RADIUS
 - (C.A.) CENTRAL ANGLE
 - (L.) CURVE LENGTH
 - (T.) TANGENT
 - (CH) CHORD
 - (C.B.) CHORD BEARING
 - (P.D. & A.E.) PRIVATE DRAINAGE & ACCESS EASEMENT
 - (P.D.E.) PRIVATE DRAINAGE EASEMENT



KEY MAP
N.T.S.



LINE	BEARING	DISTANCE
L15	N 89°17'27" E	164.16' (N.R.)

TRACT "T"
157,213 sq.ft.
3.61 acres
(SEE NOTE #9)



Bussen-Mayer Engineering Group

100 PARNELL STREET • MERRITT ISLAND, FLORIDA 32953
PH. NO.: (321) 453-0010