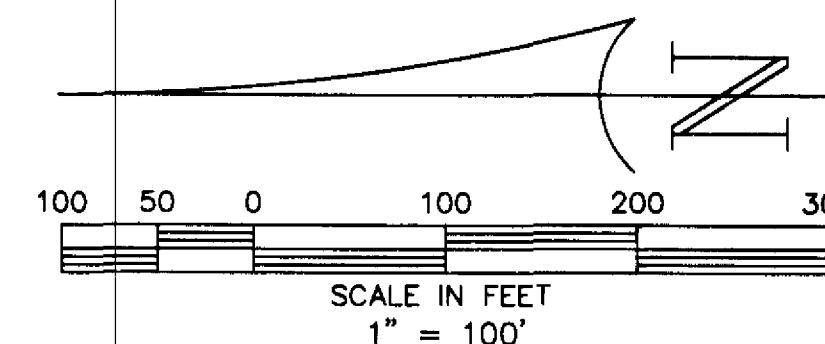
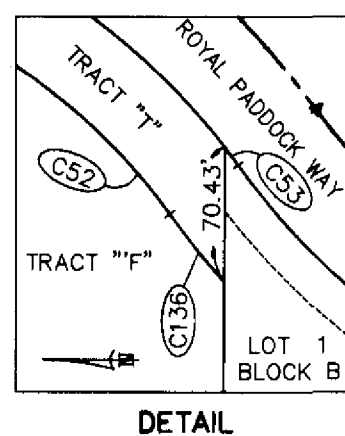


Chase Hammock Lakes

A SUBDIVISION LYING IN SECTION 25, TOWNSHIP 23 SOUTH, RANGE 36 EAST
BREVARD COUNTY, FLORIDA.

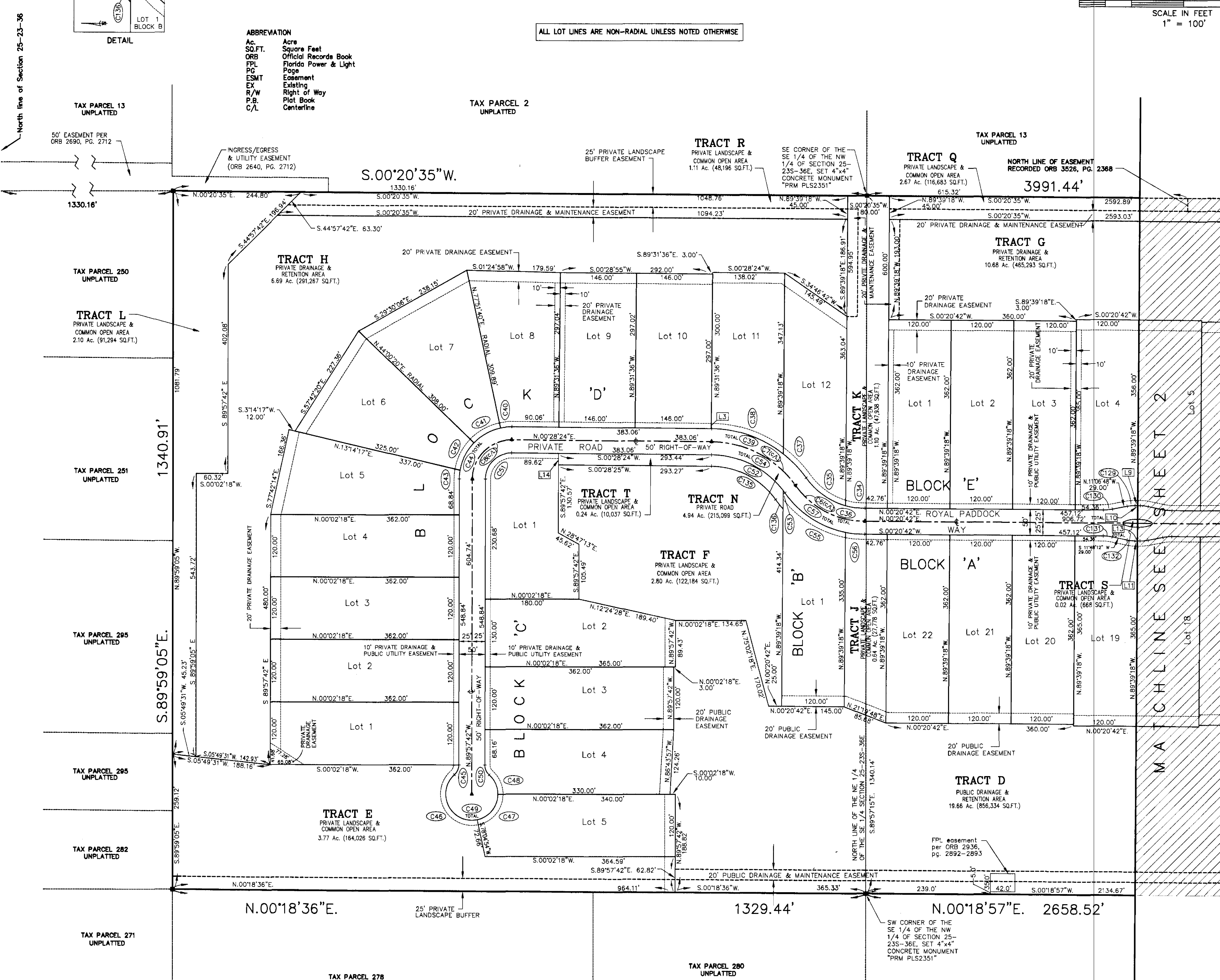


ABBREVIATION
Ac. Acre
SQ.FT. Square Feet
ORB Official Records Book
FPL Florida Power & Light
Pg Page
ESMT Easement
EX Existing
R/W Right of Way
P.B. Plat Book
C/L Centerline

ALL LOT LINES ARE NON-RADIAL UNLESS NOTED OTHERWISE

LINE	LENGTH	BEARING
L1	100.66'	N 00°04'37" E
L2	50.73'	N 00°04'37" E
L3	1.00'	N 00°28'24" E
L5	43.00'	S 00°04'37" W
L6	7.58'	S 00°04'37" W
L7	50.58'	S 00°04'37" W
L8	4.93'	N 00°20'42" E
L9	4.93'	N 00°20'42" E
L10	9.86'	N 00°20'42" E
L11	4.93'	N 00°20'42" W
L12	4.93'	S 00°20'42" W
L13	9.86'	S 00°20'42" W
L14	22.00'	S 89°57'42" E

CURVE	RADIUS	DELTA	LENGTH	TANGENT	CHORD	BEARING
C1(C/L)	250.00'	41°12'46"	179.82'	94.00'	175.97'	N 20°31'46" W
C2(C/L)	550.00'	42°06'14"	404.77'	211.70'	395.14'	S 20°05'02" E
C3(C/L)	590.00'	31°49'24"	327.20'	168.20'	323.50'	N 14°56'37" W
C4(C/L)	484.73'	62°24'02"	527.92'	293.57'	502.21'	S 00°20'42" W
C5(C/L)	590.00'	31°12'01"	321.28'	164.73'	317.33'	N 15°56'42" E
C6(C/L)	165.00'	94°02'20"	155.62'	84.14'	149.92'	S 27°21'52" W
C7(C/L)	200.00'	53°54'38"	186.18'	101.71'	181.32'	N 27°25'43" E
C8(C/L)	75.00'	90°28'06"	118.38'	76.87'	106.47'	N 44°44'39" W
C9	25.00'	89°54'47"	39.23'	24.96'	35.33'	S 44°59'46" E
C10	275.00'	3°39'09"	17.53'	8.77'	17.53'	N 01°44'57" W
C11	275.00'	31°29'25"	151.14'	77.53'	149.25'	N 19°19'14" W
C12	275.00'	6°04'12"	29.13'	14.58'	29.12'	N 38°06'03" W
C13	275.00'	41°12'46"	197.81'	103.40'	193.57'	N 20°31'46" W
C14	525.00'	11°13'34"	102.86'	51.60'	102.70'	S 35°31'22" E
C15	525.00'	12°01'57"	110.25'	55.33'	110.05'	S 23°53'37" E
C16	525.00'	14°19'12"	131.21'	65.95'	130.87'	S 10°43'02" E
C17	525.00'	4°31'31"	41.47'	20.74'	41.45'	S 01°17'41" E
C18	525.00'	42°06'14"	385.80'	202.07'	377.17'	S 20°05'02" E
C19	615.00'	7°54'11"	84.63'	42.48'	84.76'	N 02°59'01" W
C20	615.00'	10°34'59"	113.68'	56.99'	113.49'	N 12°13'45" W
C21	615.00'	11°42'40"	125.70'	63.07'	125.48'	N 23°22'45" W
C22	615.00'	13°71'44"	174.00'	87.70'	173.98'	N 30°02'42" W
C23	615.00'	31°49'24"	341.58'	175.32'	337.21'	N 14°56'37" W
C24	459.73'	15°42'23"	126.03'	63.41'	125.63'	S 23°00'07" E
C25	459.73'	17°17'09"	138.20'	69.88'	138.17'	S 06°30'21" E
C26	459.73'	18°24'25"	147.20'	74.49'	147.06'	S 11°20'26" W
C27	459.73'	11°00'04"	88.27'	44.27'	88.14'	S 26°02'41" W
C28	459.73'	62°24'02"	500.69'	278.43'	476.31'	S 00°20'42" W
C29	615.00'	4°14'35"	45.54'	22.78'	45.53'	N 29°25'25" E
C30	615.00'	10°19'36"	110.84'	55.57'	110.69'	N 22°08'20" E
C31	615.00'	9°45'49"	104.80'	52.53'	104.67'	N 12°05'36" E
C32	615.00'	6°52'01"	73.71'	36.90'	73.66'	N 03°44'31" E
C33	615.00'	10°12'01"	134.90'	67.71'	134.77'	N 15°56'42" E
C34	140.00'	15°25'35"	37.69'	18.96'	37.58'	S 08°03'29" W
C35	140.00'	38°36'45"	94.35'	49.04'	92.57'	S 35°04'39" W
C36	140.00'	54°02'20"	132.04'	71.39'	127.20'	S 27°21'52" W
C37	225.00'	16°08'40"	63.40'	31.91'	63.19'	N 46°18'41" E
C38	225.00'	37°45'57"	148.31'	76.96'	145.64'	N 19°21'22" E
C39	225.00'	53°54'38"	211.71'	114.42'	203.98'	N 27°25'43" E
C40	100.00'	12°36'43"	22.01'	11.05'	21.97'	N 05°49'58" W
C41	100.00'	33°51'21"	59.09'	30.44'	58.23'	N 29°04'00" W
C42	100.00'	34°18'54"	59.89'	30.87'	59.00'	N 63°09'08" W
C43	100.00'	9°39'08"	16.85'	8.44'	16.83'	N 85°09'09" W
C44	100.00'	30°26'06"	157.84'	100.76'	141.96'	N 44°44'39" W
C45	25.00'	11°11'18"	21.03'	10.51'	20.91'	N 65°52'01" E
C46	50.00'	15°08'47"	131.03'	65.76'	96.63'	S 63°09'17" E
C47	50.00'	78°02'36"	68.11'	40.52'	62.96'	S 50°56'24" E
C48	50.00'	48°11'23"	42.05'	22.36'	40.82'	N 65°56'36" E
C49	50.00'	27°22'46"	241.19'	44.72'	66.67'	S 00°02'18" W
C50	25.00'	48°11'23"	21.03'	11.18'	20.41'	S 65°56'36" W
C51	50.00'	90°26'06"	78.92'	50.38'	70.98'	N 44°44'39" W
C52	175.00'	52°01'43"	158.91'	85.41'	153.51'	N 26°29'15" E
C53	175.00'	1°52'55"	5.75'	2.87'	5.75'	N 53°26'34" E
C54	175.00'	53°54'38"	164.66'	89.99'	158.65'	N 27°25'43" E
C55	190.00'	42°44'08"	141.72'	74.34'	138.45'	S 33°00'57" W
C56	190.00'	11°18'11"	37.48'	18.80'	37.42'	S 05°59'46" W
C57	190.00'	54°02'20"	179.20'	96.89'	179.63'	S 27°21'52" W
C58	565.00'	11°34'54"	114.21'	57.30'	114.02'	N 06°08'09" E
C59	565.00'	13°20'08"	131.50'	66.05'	131.21'	N 18°35'41" E
C60	565.00'	6°16'58"	61.96'	31.01'	61.92'	N 28°24'14" E
C61	565.00'	31°12'01"	307.67'	157.75'	303.88'	N 15°56'42" E
C62	509.73'	8°38'15"	76.84'	38.49'	76.77'	S 27°13'35" W
C63	509.73'	11°21'56"	101.11'	50.72'	100.95'	S 17°13'30" W
C64	509.73'	11°10'32"	99.42'	49.87'	99.27'	S 05°57'16" W
C65	509.73'	11°34'19"	102.95'	51.65'	102.78'	S 05°25'10" E
C66	509.73'	11°25'04"	101.58'	50.96'	101.41'	S 16°54'52" E
C67	509.73'	8°13'55"	73.24'	36.68'	73.17'	S 26°44'22" E
C68	509.73'	62°24'02"	555.15'	308.71'	528.11'	S 00°20'42" W
C69	565.00'	5°51'29"	57.72'	28.91'	57.74'	N 27°25'43" W
C70	565.00'	54°02'20"	131.91'	66.36'	131.32'	N 18°18'32" E
C71	565.00'	12°33'18"	124.14'	62.32'	123.89'	N 05°19'34" W
C72	565.00'	31°49'24"	313.81'	161.07'	309.79'	N 14°56'37" W
C73	575.00'	1°05'28"	10.95'	5.48'	10.95'	S 00°25'21" W
C74	575.00'	10°59'53"	110.37'	55.36'	110.20'	S 05°37'20" E
C75	575.00'	10°51'05"	108.90'	54.61'	108.74'	S 16°32'49" E
C76	575.00'	11°32'24"	115.81'	58.10'	115.62'	S 27°44'34" E
C77	575.00'	7°37'23"	76.50'	38.31'	76.45'	S 37°19'27" E
C78	575.00'	42°06'14"	422.54'	221.32'	413.10'	S 20°05'02" E
C79	225.00'	14°49'48"	58.24'	29.28'	58.07'	N 33°43'15" W
C80	225.00'	26°22'59"	103.61'	52.74'	102.69'	N 13°06'52" W
C81	225.00'	41°12'46"	161.84'	84.80'	158.38'	N 20°31'46" W
C82	25.00'	90°05'13"	39.31'	25.04'	35.38'	N 45°07'47" E
C83	940.00'	6°54'29"	139.30'	69.63'	139.26'	S 28°34'29" W
C84	940.00'	8°07'51"	133.39'	66.81'	133.28'	S 21°03'19" W
C85	940.00'	8°13'24"	134.91'	67.57'	134.80'	S 12°52'42" E
C86	940.00'	7°54'33"	129.76'	64.98'	129.66'	S 04°48'44" E
C87	940.00'	1°49'32"	29.95'	14.98'	29.95'	S 00°03'19" W
C88	940.00'	32°59'48"	541.34'	278.41'	533.89'	S 15°31'49" E
C89	200.00'	21°43'12"	75.82'	38.37'	75.36'	N 09°53'31" W
C90	200.00'	10°06'11"	35.27'	17.68'	35.22'	N 25°48'13" W
C91	200.00'	31°49'24"	111.08'	57.02'	109.66'	N 14°56'37" W
C92	874.73'	5°27'33"	83.34'	41.70'	83.31'	S 28°07'33" E
C93	874.73'	7°40'08"	117.07'	58.62'	116.98'	S 21°33'44" E
C94	874.73'	9°08'21"	139.53'	69.91'	139.38'	S 13°09'30" E
C95	874.73'	8°52'20"	136.72'	68.30'	136.58'	S 04°06'40" E
C96	874.73'	8°39'49"	139.90'	70.10'	139.75'	S 04°56'54" W
C97	874.73'	9°14'29"	141.02'	70.66'	140.88'	S 14°08'54" W
C98	874.73'	7°01'47"	107.32'	53.73'	107.26'	S 22°16'54" W
C99	874.73'	5°44'55"	87.76'	43.92'	87.73'	S 28°40'15" W
C127	86.00'	11°27'30"	17.20'	8.63'	17.17'	S 06°04'27" W
C128	76.50'	11°27'30"	15.30'	7.68'	15.27'	S 06°04'27" W
C129	76.50'	11°27'30"	15.30'	7.68'	15.27'	S 05°23'03" W
C130	86.00'	11°27'30"	17.20'	8.63'	17.17'	S 05°23'03" E
C131	86.00'	11°27'30"	17.20'	8.63'	17.17'	S 06°04'27" E
C132	76.50'	11°27'30"	15.30'	7.68'	15.27'	S 06°04'27" W
C133	76.50'	11°27'30"	15.30'	7.68'	15.27'	S 05°23'03" E
C134	86.00'	11°27'30"	17.20'	8.63'	17.17'	S 05°23'03" W
C135	152.33'	54°10'03"	144.01'	77.90'	138.71'	N 27°25'43" E
C136	212.00'	6°09'45"	22.80'	11.41'	22.79'	S 51°18'09" W



ALL PRIVATE EASEMENTS SHOWN ON THIS PLAT ARE IN FAVOR OF THE HOMEOWNERS ASSOCIATION

