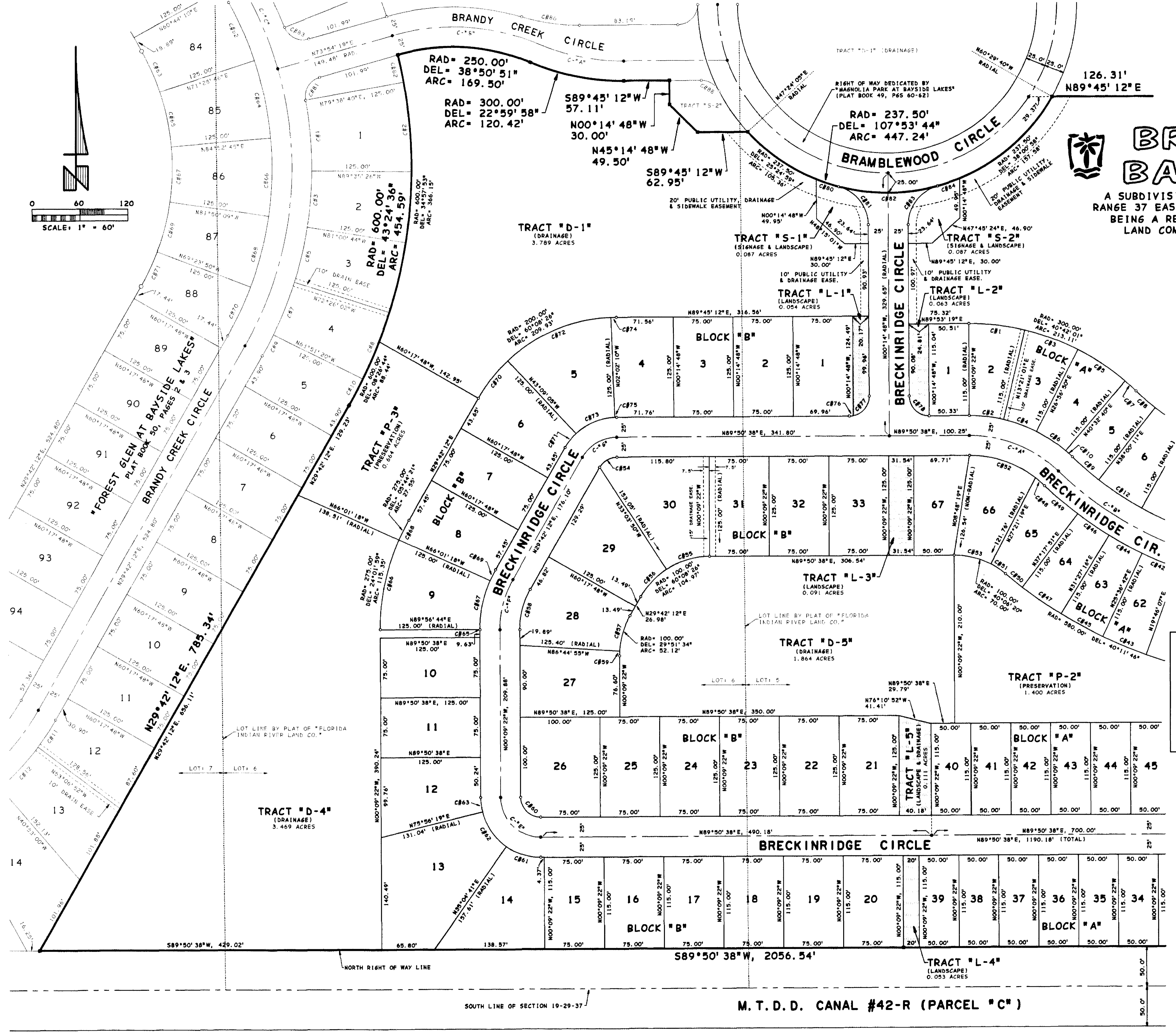


BROOKSIDE at BAYSIDE LAKES

A SUBDIVISION LYING IN SECTION 19, TOWNSHIP 29 SOUTH, RANGE 37 EAST, CITY OF PALM BAY, BREVARD COUNTY, FLORIDA BEING A REPLAT OF PORTALS OF "FLORIDA INDIAN RIVER LAND COMPANY" RECORDED IN PLAT BOOK 1, PAGE 165



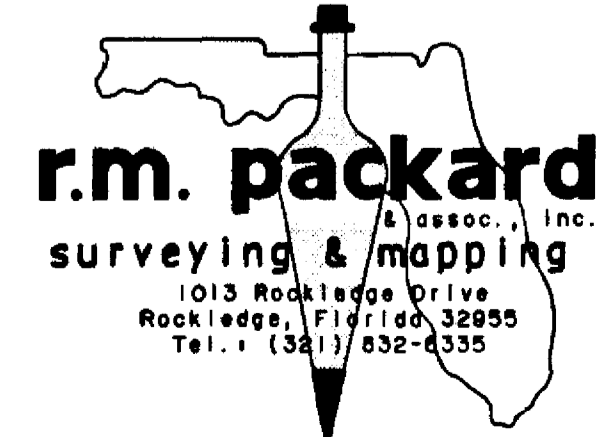
LOT CURVE DATA:

CURVE	RADIUS	DELTA	ARC	TAN	CHORD	BEARING
C #1	300.00'	13°30'23"	70.72'	35.52'	70.56'	N83°24'11"W
C #2	185.00'	13°30'23"	43.61'	21.91'	43.51'	N83°24'11"W
C #3	300.00'	13°35'49"	71.19'	35.76'	71.03'	N69°51'04"W
C #4	185.00'	13°35'49"	43.90'	22.05'	43.80'	N69°51'04"W
C #5	300.00'	13°35'49"	71.19'	35.76'	71.03'	N56°15'15"W
C #6	185.00'	13°35'49"	43.90'	22.05'	43.80'	N56°15'15"W
C #7	300.00'	03°30'19"	18.35'	9.18'	18.35'	N47°42'11"W
C #8	300.00'	06°02'48"	31.66'	15.84'	31.65'	N48°58'25"W
C #9	415.00'	06°02'48"	43.80'	21.92'	43.78'	N48°58'25"W
C #10	185.00'	03°30'19"	11.32'	5.66'	11.32'	N47°42'11"W
C #11	300.00'	08°56'23"	46.81'	23.45'	46.76'	N56°28'01"W
C #12	415.00'	08°56'23"	64.75'	32.44'	64.69'	N56°28'01"W
C #13	300.00'	08°56'23"	46.81'	23.45'	46.76'	N65°24'24"W
C #14	415.00'	08°56'23"	64.75'	32.44'	64.69'	N65°24'24"W
C #15	580.00'	09°50'35"	59.15'	29.60'	59.12'	N73°09'10"W
C #41	465.00'	09°50'35"	47.42'	23.73'	47.40'	N67°18'36"W
C #42	580.00'	09°50'35"	59.15'	29.60'	59.12'	N67°18'36"W
C #43	465.00'	09°50'35"	47.42'	23.73'	47.40'	N61°28'01"W
C #44	580.00'	09°50'35"	59.15'	29.60'	59.12'	N61°28'01"W
C #45	465.00'	09°50'35"	47.42'	23.73'	47.40'	N55°37'26"W
C #46	580.00'	09°50'35"	59.15'	29.60'	59.12'	N55°37'26"W
C #47	135.00'	06°24'53"	15.12'	7.57'	15.11'	N49°09'28"W
C #48	465.00'	06°45'07"	54.80'	27.43'	54.77'	N49°19'35"W
C #49	580.00'	02°39'07"	26.84'	13.42'	26.84'	N51°22'36"W
C #50	100.00'	12°35'38"	21.98'	11.03'	21.94'	N56°20'52"W
C #51	135.00'	37°47'27"	89.04'	46.21'	87.44'	N71°10'38"W
C #52	100.00'	27°30'41"	48.02'	24.48'	47.56'	N76°24'01"W
C #53	25.00'	60°08'26"	26.24'	14.47'	25.05'	N59°46'25"E
C #54	100.00'	32°54'28"	57.43'	29.53'	56.65'	N73°23'24"E
C #55	100.00'	27°13'58"	47.53'	24.22'	47.08'	N43°19'11"E
C #56	100.00'	26°27'08"	46.17'	23.50'	45.76'	N16°28'39"E
C #57	100.00'	29°51'00"	52.10'	26.65'	51.51'	N14°44'35"E
C #58	100.00'	03°24'27"	5.95'	2.97'	5.95'	N01°32'51"E
C #59	25.00'	90°00'00"	39.27'	25.00'	35.36'	N45°09'22"W
C #60	75.00'	35°14'03"	46.12'	23.82'	45.40'	N72°32'21"W
C #61	75.00'	40°51'39"	53.49'	27.94'	52.36'	N34°29'30"W
C #62	75.00'	13°54'19"	18.20'	9.15'	18.16'	N07°06'31"W
C #63	275.00'	00°06'06"	0.49'	0.24'	0.49'	N00°06'23"W
C #64	150.00'	00°06'06"	0.27'	0.13'	0.27'	N00°06'27"W
C #65	275.00'	24°01'59"	115.55'	58.54'	114.51'	N11°57'43"E
C #66	150.00'	24°01'59"	62.92'	31.93'	62.46'	N11°57'43"E
C #67	275.00'	05°44'21"	27.55'	13.78'	27.53'	N26°50'53"E
C #68	150.00'	05°45'03"	15.06'	7.53'	15.05'	N26°51'14"E
C #69	200.00'	17°08'43"	59.85'	30.15'	59.63'	N38°16'34"E
C #70	75.00'	17°08'43"	22.44'	11.31'	22.36'	N38°16'34"E
C #71	200.00'	41°06'54"	143.52'	75.01'	140.46'	N67°24'23"E
C #72	75.00'	41°06'54"	53.82'	28.13'	52.67'	N67°24'23"E
C #73	200.00'	01°52'48"	6.56'	3.28'	6.56'	N88°54'14"E
C #74	75.00'	01°52'48"	2.46'	1.23'	2.46'	N88°54'14"E
C #75	25.00'	11°37'39"	5.07'	2.55'	5.06'	N84°01'48"E
C #76	25.00'	78°27'48"	34.24'	20.41'	31.62'	N38°59'09"E
C #77	25.00'	89°54'34"	39.23'	24.96'	35.33'	N45°12'05"W
C #78	190.00'	02°41'53"	8.95'	4.47'	8.95'	N88°53'52"W
C #79	237.50'	07°06'35"	29.47'	14.76'	29.45'	N71°34'12"W
C #80	50.00'	74°52'42"	65.34'	38.28'	60.79'	N37°41'09"W
C #81	237.50'	30°14'36"	125.36'	64.18'	123.91'	N89°45'12"E
C #82	50.00'	74°52'42"	65.34'	38.28'	60.79'	N37°41'09"W
C #83	237.50'	07°06'35"	29.47'	14.76'	29.45'	N71°04'36"E
C #84	237.50'	38°00'58"	157.58'	81.82'	154.71'	N48°30'50"E

CENTERLINE CURVE DATA:

CURVE	RADIUS	DELTA	ARC	TAN	CHORD	BEARING
C-A*	160.00'	44°12'20"	123.45'	64.98'	120.41'	N68°03'12"W
C-B*	440.00'	44°17'46"	340.17'	179.10'	331.76'	N68°05'55"W
C-E*	50.00'	90°00'00"	78.54'	50.00'	70.71'	N45°09'22"W
C-F*	125.00'	29°51'34"	65.14'	33.33'	64.41'	N14°46'25"E
C-G*	50.00'	60°08'26"	52.48'	28.95'	50.11'	N59°46'25"E

SEE SHEET 3 OF 3



M. T. D. CANAL #42-R (PARCEL "C")