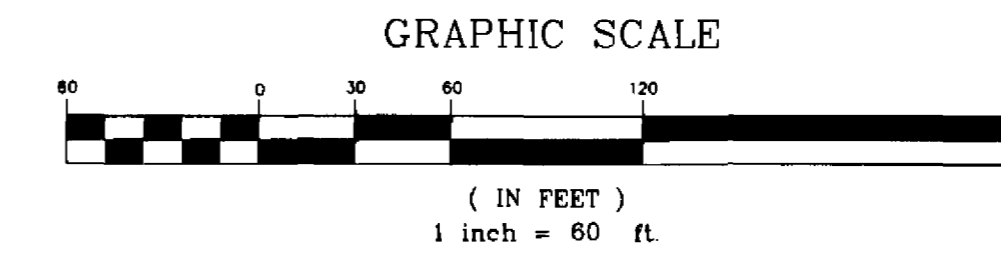
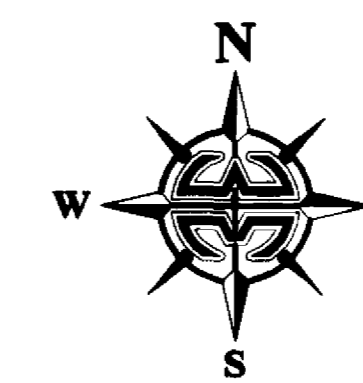


OAK GROVE AT WEST MELBOURNE PHASE THREE

A REPLAT OF PORTIONS OF LOTS 25, 26, 27, 28 AND 29, FLORIDA INDIAN RIVER LAND COMPANY, PLAT BOOK 1, PAGE 164
SECTION 17, TOWNSHIP 28 SOUTH, RANGE 37 EAST, CITY OF WEST MELBOURNE, COUNTY OF BREVARD, FLORIDA

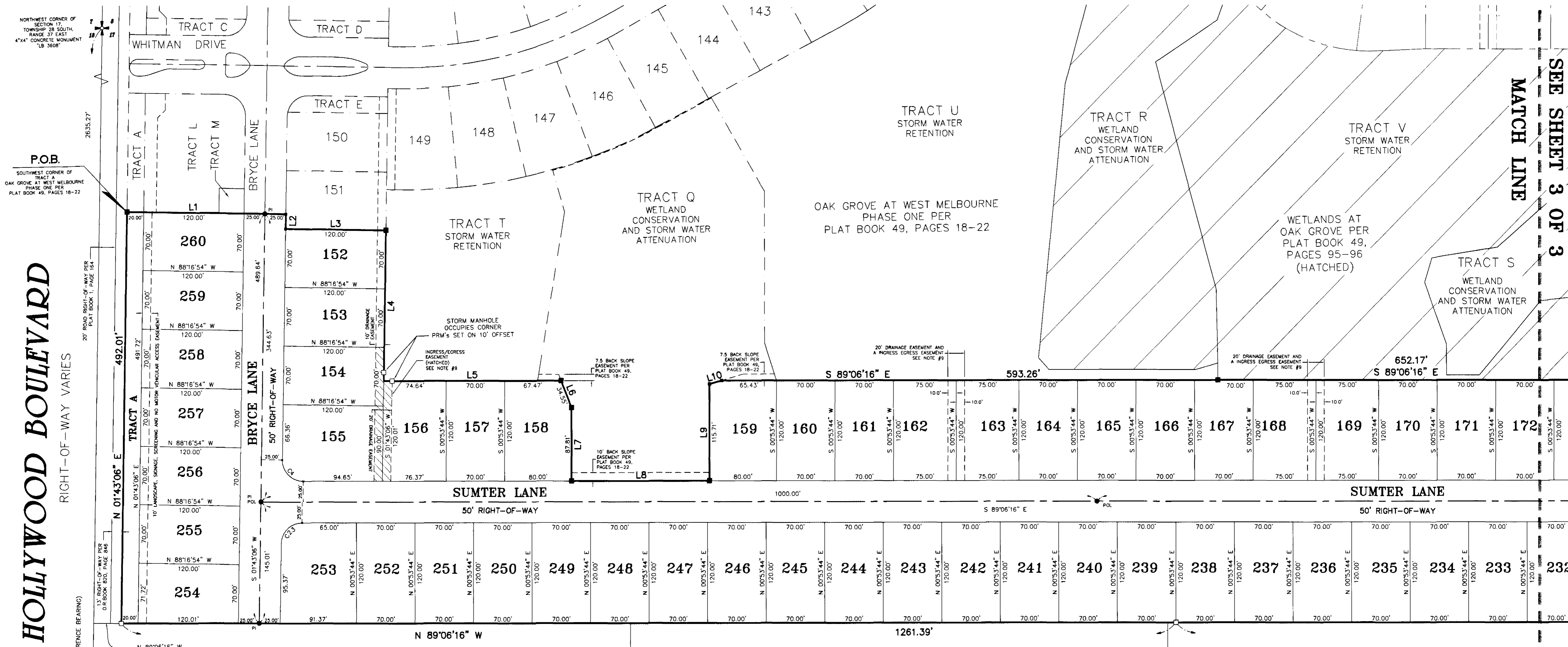
PLAT BOOK 50 PAGE 33
SHEET 2 OF 3
SECTION 17 TWP. 27 S., RANGE 37 E.



PREPARED BY:
WILLIAM MOTT LAND SURVEYING INC.
3716 NORTH WICKHAM ROAD, SUITE 3
MELBOURNE, FLORIDA 32935-2338
PHONE (321) 751-4444 FAX (321) 751-4445
PROJECT NUMBER: 2030141
DRAWING NAME: OAK GROVE-PH 3.DWG
DRAWN BY: EDWARD A. WHITE
CHECKED BY: DANIEL D. GARNER P.S.M. 6189

NOTE:
PRIOR TO THE RELEASE OF THE PERFORMANCE BOND,
ALL LOT CORNER MONUMENTATION WILL BE SET AS
1/2" IRON RODS WITH CAPS MARKED "LB 3608".

NOTE: THIS PLAT, AS RECORDED IN ITS GRAPHIC FORM, IS THE OFFICIAL
DEPICTION OF THE SUBDIVIDED LANDS DESCRIBED HEREIN AND WILL IN NO
CIRCUMSTANCES BE SUPPLANTED IN AUTHORITY BY ANY OTHER GRAPHIC OR
DIGITAL FORM OF THE PLAT. THERE MAY BE ADDITIONAL RESTRICTIONS THAT
ARE NOT RECORDED ON THIS PLAT THAT MAY BE FOUND IN THE PUBLIC
RECORDS OF THIS COUNTY.

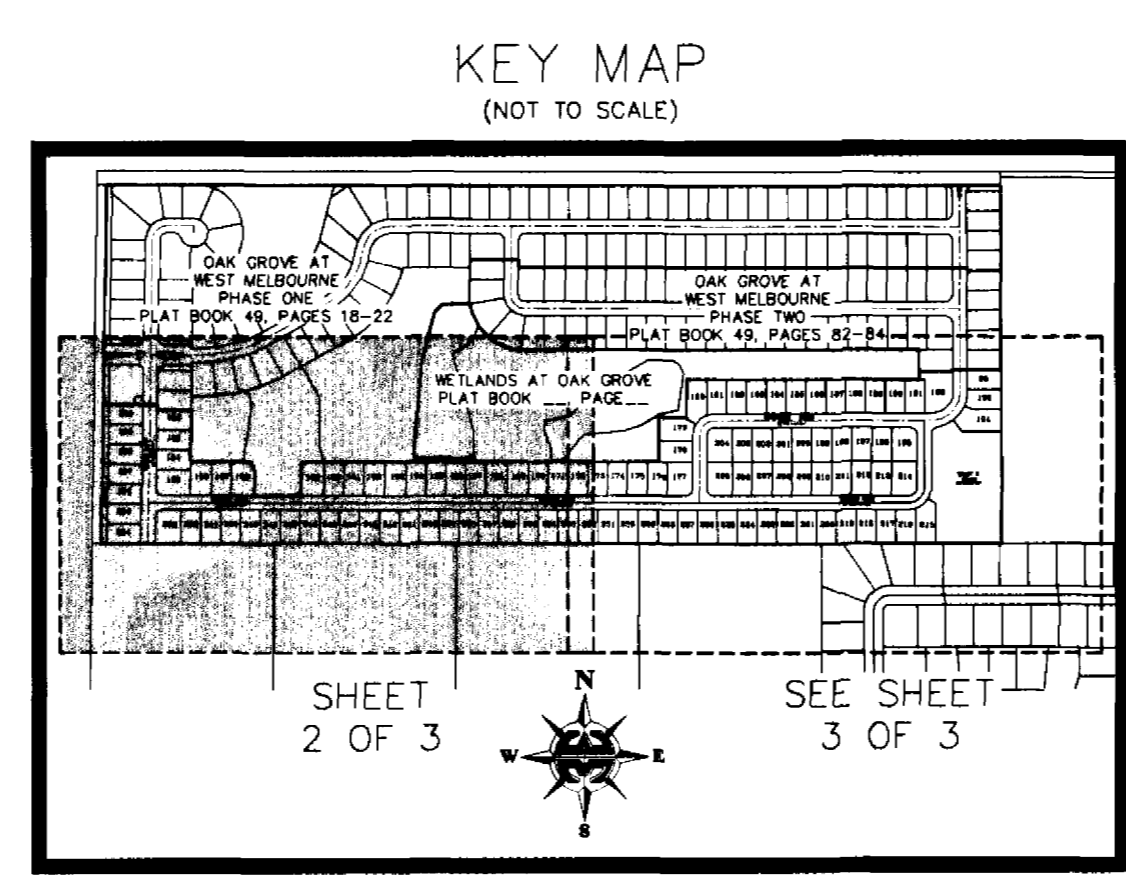


HOLLYWOOD BOULEVARD
RIGHT-OF-WAY VARIES

SEE SHEET 3 OF 3
MATCH LINE

CURVE	RADIUS	DELTA	LENGTH	CHORD	CHORD BEARING
C1	100.00'	90°16'58"	157.57'	141.77'	N 45°45'15" E
C2	50.00'	90°01'02"	78.95'	70.72'	N 45°53'13" E
C3	50.00'	90°00'00"	78.54'	70.71'	S 45°53'44" W
C4	25.00'	90°49'22"	39.63'	35.61'	S 43°41'35" E
C5	25.00'	90°00'00"	39.27'	35.36'	N 45°53'44" E
C6	75.00'	30°29'12"	39.91'	39.44'	S 16°08'20" W
C7	75.00'	38°29'01"	50.37'	49.43'	S 00°37'27" W
C8	75.00'	21°01'48"	27.53'	27.37'	S 80°22'51" W
C9	75.00'	90°16'58"	118.18'	106.33'	N 45°45'15" E
C10	125.00'	23°23'23"	51.03'	50.67'	N 12°18'28" E
C11	125.00'	30°35'06"	66.73'	65.94'	N 39°17'42" E
C12	125.00'	27°39'41"	60.35'	59.76'	N 68°25'05" E
C13	125.00'	7°07'09"	15.53'	15.52'	N 58°08'49" E
C14	125.00'	20°32'32"	44.82'	44.58'	N 71°58'40" E
C15	25.00'	81°22'14"	35.50'	32.60'	S 41°33'49" W
C16	25.00'	89°58'58"	39.26'	35.35'	N 44°06'47" W
C17	25.00'	90°00'00"	39.27'	35.36'	S 45°53'44" W
C18	25.00'	90°00'00"	39.27'	35.36'	S 44°06'16" W
C19	25.00'	90°01'02"	39.28'	35.36'	N 45°53'13" E
C20	75.00'	30°00'00"	39.27'	38.82'	N 15°52'42" E
C21	75.00'	42°33'51"	55.72'	54.44'	N 52°09'37" E
C22	75.00'	17°27'11"	22.85'	22.76'	N 82°10'08" E
C23	25.00'	89°10'38"	38.91'	35.10'	S 46°18'25" W

LINE	LENGTH	BEARING
L1	190.00'	S 88°16'54" E
L2	17.54'	S 01°43'06" W
L3	120.00'	S 88°16'54" E
L4	179.99'	S 01°43'06" W
L5	212.11'	S 89°06'16" E
L6	34.55'	S 20°22'21" E
L7	87.81'	S 00°53'44" W
L8	165.00'	S 89°06'16" E
L9	115.71'	N 00°53'44" E
L10	15.19'	N 74°28'12" E
L11	155.00'	N 00°53'44" E
L12	93.09'	S 89°06'16" E
L13	9.80'	S 58°37'04" E
L14	137.04'	N 00°53'44" E
L15	28.85'	N 00°36'46" E
L16	170.00'	S 89°06'31" E
L17	4.42'	N 00°36'46" E
L18	120.00'	S 89°23'14" E
L19(R)	43.26'	S 58°37'04" E
L20(R)	30.00'	N 65°59'51" W
L21(R)	50.00'	S 35°24'45" E
L22	13.76'	N 56°43'02" W
L23	20.00'	N 33°16'58" E
L24	19.19'	N 56°43'02" W
L25(R)	31.78'	N 59°07'18" W



LEGEND:

- = 4"x4" CONCRETE MONUMENT WITH NAIL AND DISK MARKED "PRM PLS 5060" (SET)
- = 4"x4" CONCRETE MONUMENT WITH NAIL AND DISK MARKED "PRM PLS 5060" (FOUND)
- = NAIL AND DISK MARKED "PCP PLS 5060" (SET)
- = NAIL AND DISK MARKED "PCP PLS 5060" (FOUND)
- ▲ = NAIL AND DISK MARKED "PRM PLS 5060" (SET)
- △ = NAIL AND DISK MARKED "PRM PLS 5060" (FOUND)
- PUB/DE = PUBLIC UTILITIES AND DRAINAGE EASEMENT
- C# = CURVE NUMBER FOR CURVE TABLE
- L# = LINE NUMBER FOR LINE TABLE
- R/W = RIGHT-OF-WAY
- P.B. = PLAT BOOK
- PG. = PAGE
- RP = RADIUS POINT
- POL = POINT-ON-LINE
- POC = POINT-ON-CURVE
- PI = POINT-OF-INTERSECTION
- PT = POINT-OF-TANGENCY
- PC = POINT-OF-CURVATURE
- PRC = POINT-OF-REVERSE CURVATURE
- POC = POINT-OF-COMPOUND CURVATURE
- P.O.B. = POINT-OF-BEGINNING
- P.O.C. = POINT-OF-COMMENCEMENT
- PRM = PERMANENT REFERENCE MONUMENT
- PCP = PERMANENT CONTROL POINT
- (R) = RADIAL
- (NR) = NON-RADIAL
- ESMT = EASEMENT
- O.R.B./O.R.Book = OFFICIAL RECORDS BOOK
- H.O.A. = HOME OWNERS ASSOCIATION
- LB = LICENSED BUSINESS
- PLS = PROFESSIONAL LAND SURVEYOR
- PSM = PROFESSIONAL SURVEYOR AND MAPPER
- R = RADIUS
- D = DELTA
- L = LENGTH
- CD = CHORD DISTANCE
- CB = CHORD BEARING

WEST 1/4 CORNER OF SECTION 17, TOWNSHIP 28 SOUTH, RANGE 37 EAST (POINT FALLS IN DITCH) 4"x4" CONCRETE MONUMENT "LB 3608" N 01°43'06" E 48.01'

2593.78'