

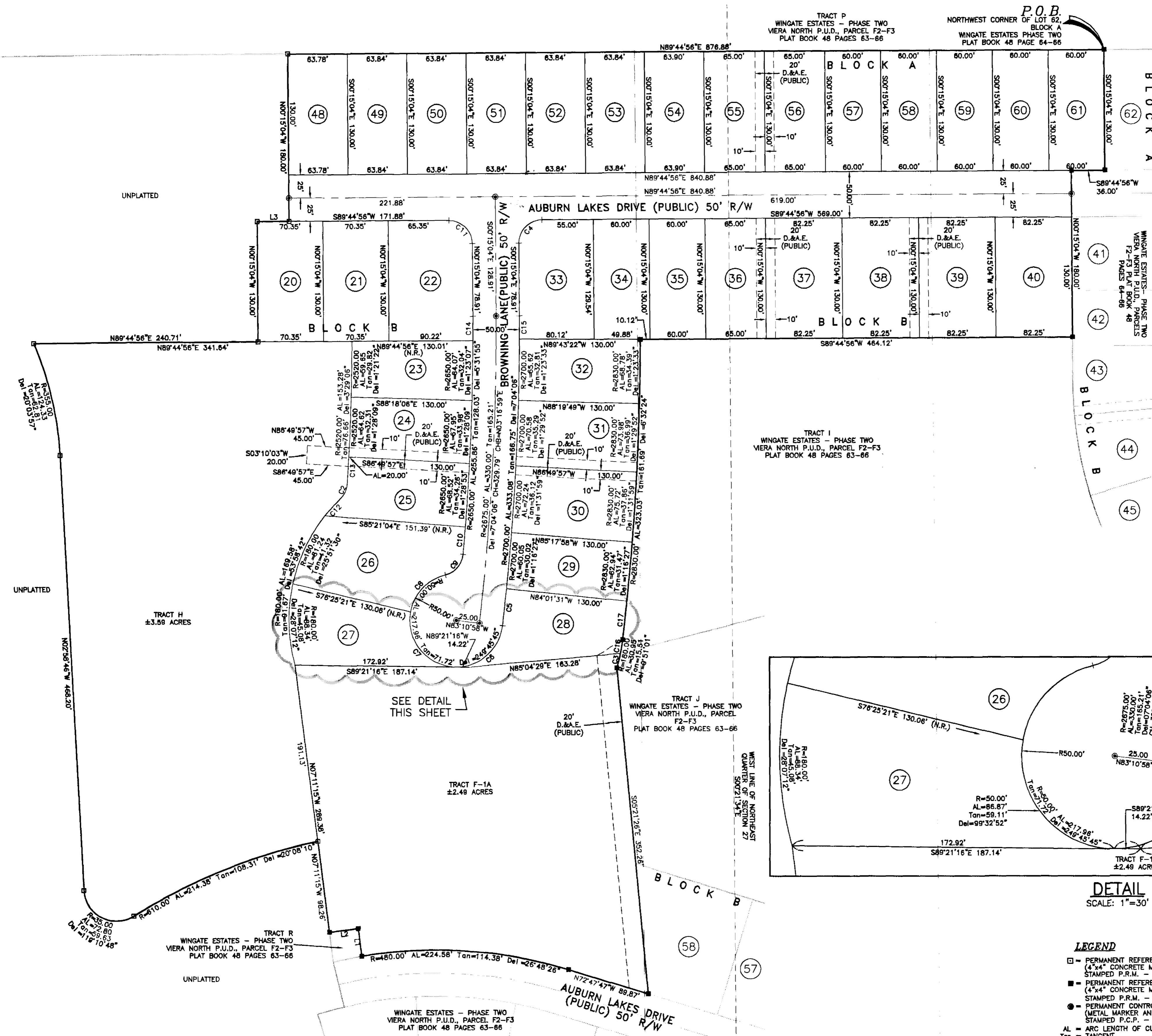
# WINGATE ESTATES - PHASE FOUR

## VIERA NORTH P.U.D., PARCELS F2-F3

### SECTION 27, TOWNSHIP 25 SOUTH, RANGE 36 EAST

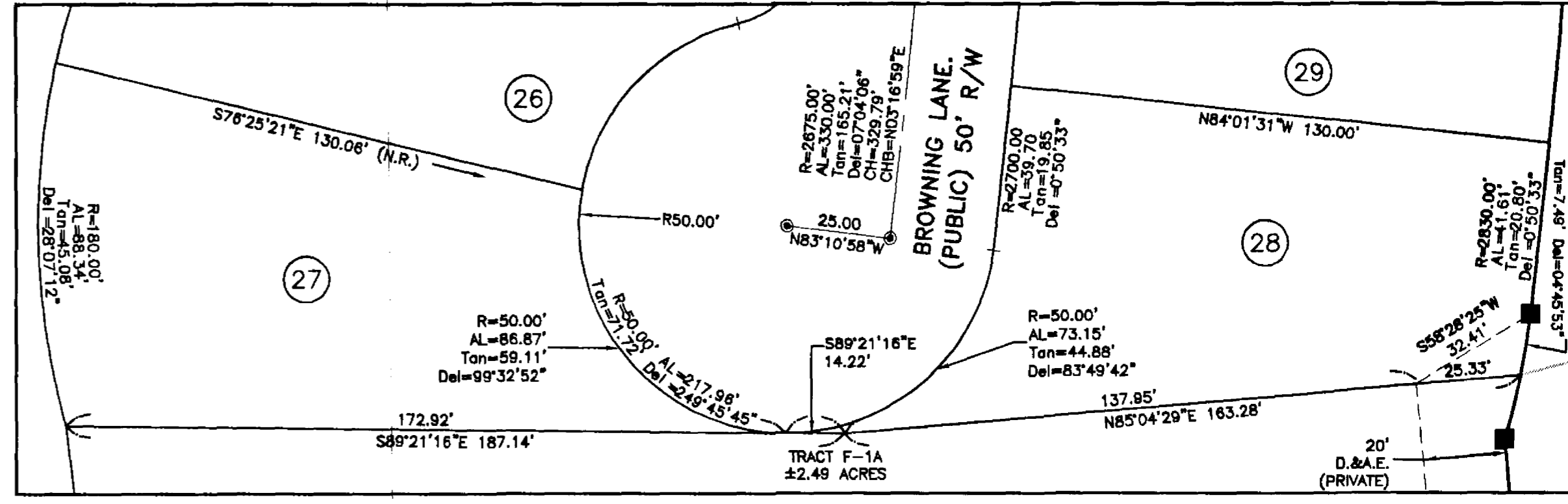
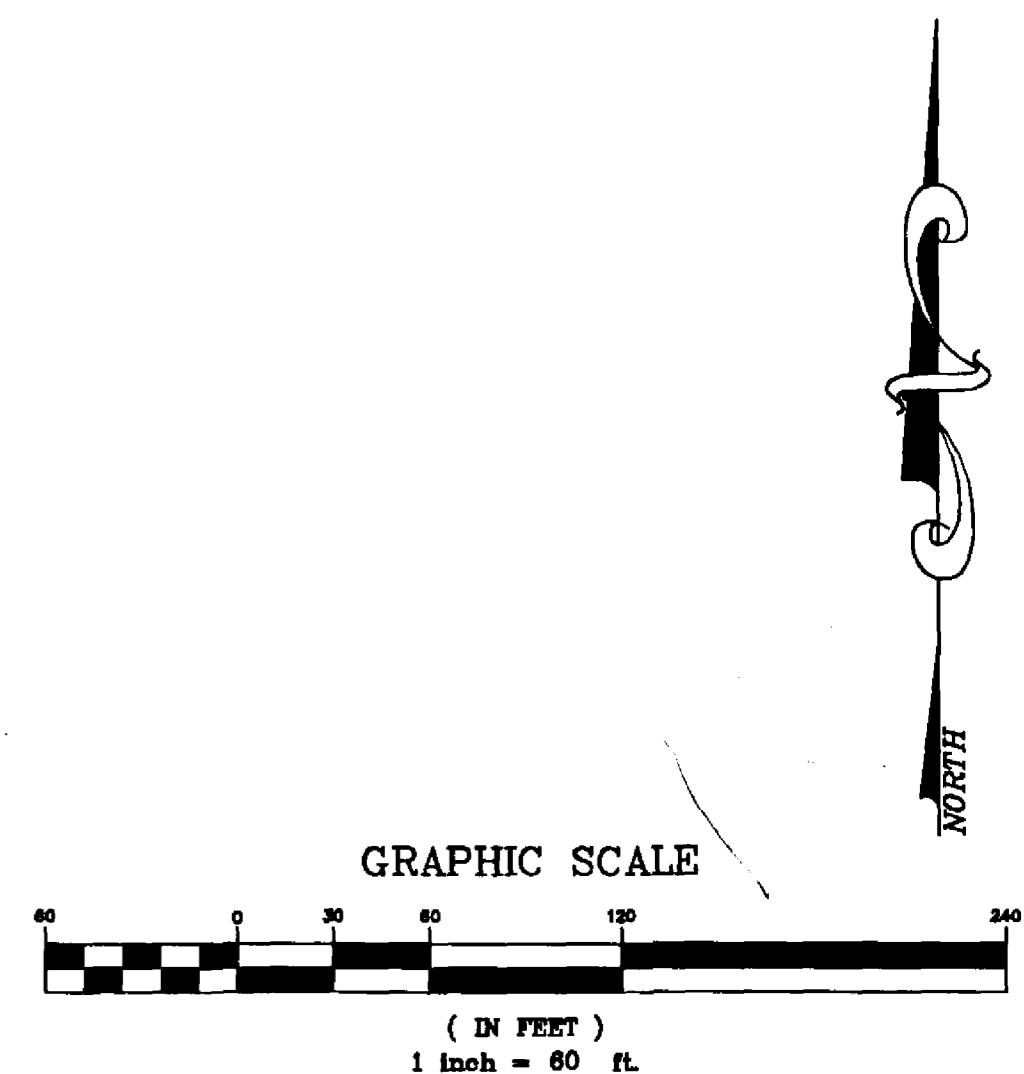
#### BREVARD COUNTY, FLORIDA

PLAT BOOK 50, PAGE 26  
SHEET 2 OF 2  
SECTION 27, TWP. 25 S., RANGE 36 E.



LINE TABLE		
LINE	LENGTH	BEARING
L1	30.00	N07°11'15"W
L2	31.19	S82°48'45"W
L3	34.18	N89°44'56"E

CURVE TABLE					
CURVE	RADIUS	LENGTH	DELTA	CHORD BEARING	CHORD
C1	180.00'	30.95'	9°51'01"	N11°44'32"E	30.91'
C2	25.00'	18.50'	42°23'46"	N25°01'31"E	18.08'
C3	180.00'	15.98'	5°05'08"	N14°07'28"E	15.97'
C4	25.00'	39.27'	90°00'00"	S44°44'58"W	35.36'
C5	2700.00'	39.70'	0°50'33"	N06°23'45"E	39.69'
C6	50.00'	73.15'	83°49'42"	N48°43'53"E	66.80'
C7	50.00'	86.87'	99°32'52"	S39°34'50"E	76.35'
C8	50.00'	57.93'	66°23'11"	S43°23'11"W	54.75'
C9	25.00'	31.11'	71°17'55"	N40°55'49"E	29.14'
C10	2650.00'	29.23'	0°37'55"	N04°57'54"E	29.23'
C11	25.00'	39.27'	90°00'00"	N45°15'04"W	35.36'
C12	180.00'	24.28'	7°43'37"	S42°21'35"W	24.26'
C13	2520.00'	29.02'	0°39'35"	N03°28'50"E	29.02'
C14	2650.00'	26.09'	0°33'51"	N00°01'51"E	26.09'
C15	2700.00'	24.89'	0°31'42"	N00°00'47"E	24.89'
C16	180.00'	14.97'	4°45'53"	N08°11'58"E	14.96'
C17	2830.00'	41.61'	0°50'33"	N06°23'45"E	41.61'



**DETAIL**  
SCALE: 1"=30'

- LEGEND**
- - PERMANENT REFERENCE MONUMENT-SET (4"x4" CONCRETE MARKER WITH METAL DISK STAMPED P.R.M. - LS3913)
  - - PERMANENT REFERENCE MONUMENT-FOUND (4"x4" CONCRETE MARKER WITH METAL DISK STAMPED P.R.M. - LS3913)
  - - PERMANENT CONTROL POINT (METAL MARKER AND METAL DISK STAMPED P.C.P. - LS3913)
  - AL = ARC LENGTH OF CURVE
  - Tan = TANGENT
  - R = RADIUS OF CURVE
  - Del = CENTRAL ANGLE OF CURVE (DELTA)
  - Ch = CHORD LENGTH OF CURVE
  - ChB = CHORD BEARING OF CURVE
  - RB = RADIAL BEARING
  - (NR) = NON RADIAL LINE
  - I.R. = IRON ROD
  - I.R.C. = IRON ROD AND CAP
  - P.O.B. = POINT OF BEGINNING
  - P.O.C. = POINT OF COMMENCEMENT
  - PC = POINT OF CURVATURE
  - PRC = POINT OF REVERSE CURVATURE
  - PI = POINT OF INTERSECTION
  - PT = POINT OF TANGENCY
  - C1 = CURVE TABLE LABEL
  - L1 = LINE TABLE LABEL
  - FND = FOUND
  - (TYP) = TYPICAL
  - R/W = RIGHT OF WAY
  - US&AE = UTILITY, SIDEWALK & UTILITY EASEMENT
  - DE = DRAINAGE EASEMENT
  - UE = UTILITY EASEMENT
  - ESMT = EASEMENT
  - D.&A.E. = DRAINAGE AND ACCESS EASEMENT (PRIVATE)
  - ORB = OFFICIAL RECORD BOOK
  - PB = PLAT BOOK
  - PGS = PAGES
  - CL = CENTERLINE

- THIS PLAT PREPARED BY -  
**B.S.E. CONSULTANTS, INC.**  
CONSULTING - ENGINEERING - LAND SURVEYING  
312 SOUTH HARBOR CITY BOULEVARD, SUITE 4  
MELBOURNE, FLORIDA PHONE: (321) 725-3674 FAX: (321) 723-1159

**NOTICE:** THIS PLAT, AS RECORDED IN ITS GRAPHIC FORM, IS THE OFFICIAL DEPICTION OF THE SUBDIVIDED LANDS DESCRIBED HEREIN AND WILL IN NO CIRCUMSTANCES BE SUPPLANTED IN AUTHORITY BY ANY OTHER GRAPHIC OR DIGITAL FORM OF THE PLAT. THERE MAY BE ADDITIONAL RESTRICTIONS THAT ARE NOT RECORDED ON THIS PLAT THAT MAY BE FOUND IN THE PUBLIC RECORDS OF THIS COUNTY.