

# SONOMA SOUTH - PHASE 2

## VIERA CENTRAL P.U.D. - A PORTION OF PARCEL 1

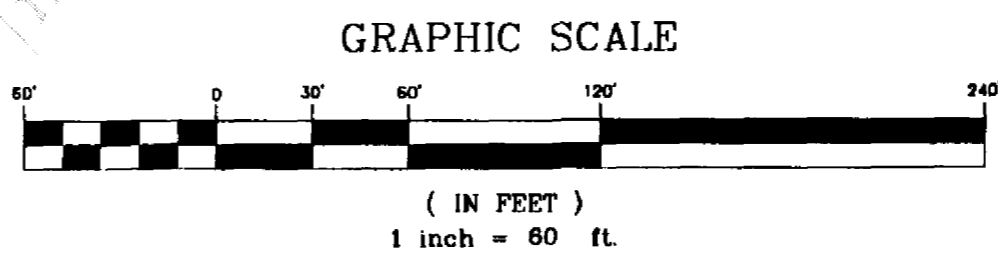
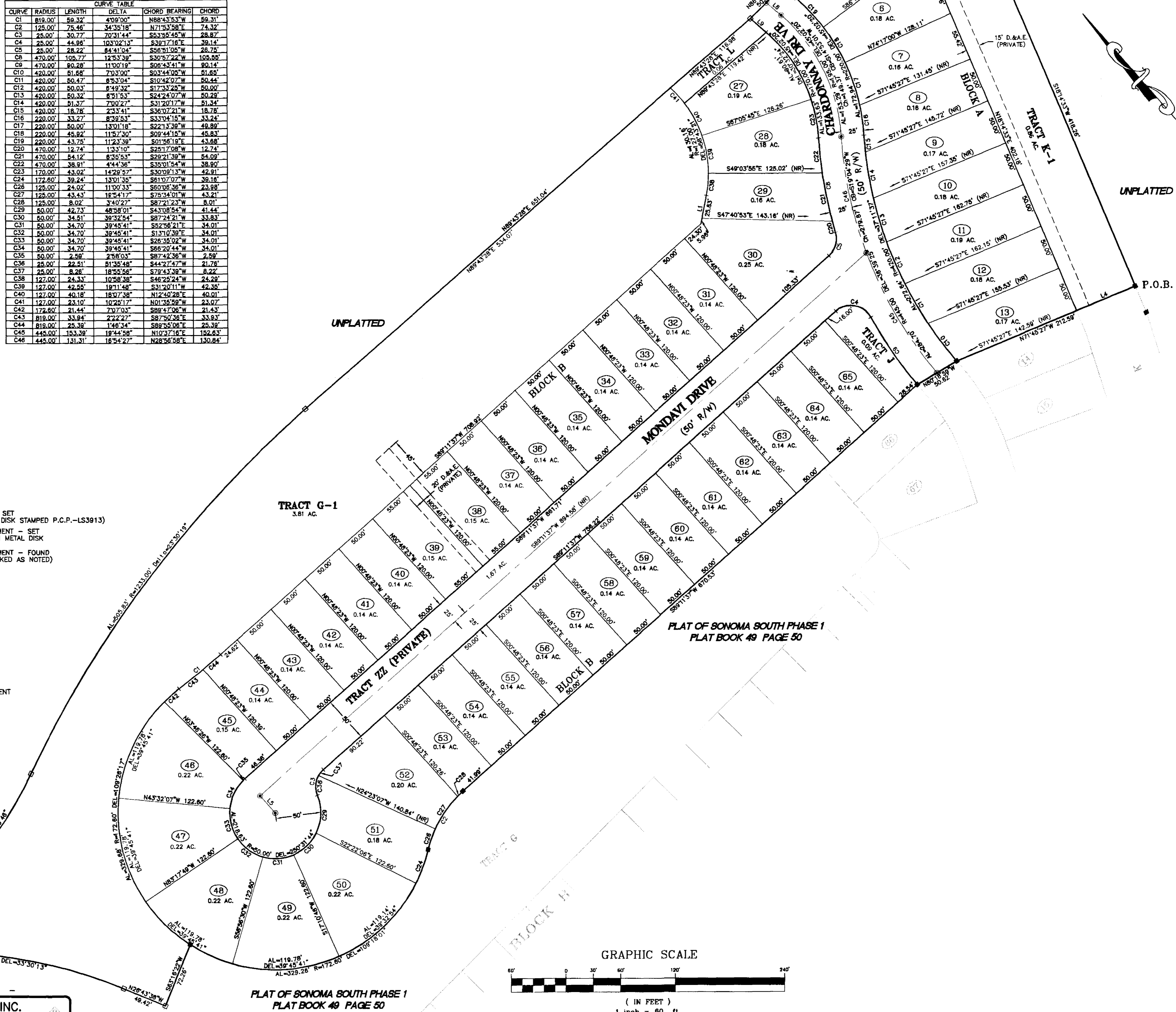
### SECTION 33, TOWNSHIP 25 SOUTH, RANGE 36 EAST

### VIERA, BREVARD COUNTY, FLORIDA

LINE	BEARING	LENGTH
L1	S51°54'43"W	31.79'
L2	S11°38'18"W	21.18'
L3	N82°21'51"E	63.00'
L4	N71°48'27"W	70.00'
L5	S00°48'27"E	48.00'
L6	S11°38'18"W	18.89'
L7	S11°38'18"W	2.50'
L8	S07°38'09"E	21.63'
L9	S07°38'09"E	23.25'
L10	S07°38'09"E	20.00'

CURVE	RADIUS	LENGTH	DELTA	CHORD BEARING	CHORD
C1	819.00'	59.32'	4'09"00"	N88°43'53"W	59.31'
C2	125.00'	75.46'	34°35'18"	N71°53'58"E	74.32'
C3	25.00'	30.77'	70°31'44"	S53°58'45"W	28.87'
C4	25.00'	44.86'	103°02'13"	S39°17'18"E	39.14'
C5	25.00'	28.22'	84°41'04"	S56°51'08"W	26.75'
C6	470.00'	105.77'	12°53'38"	S30°57'22"W	105.55'
C7	470.00'	80.28'	11°00'19"	S06°43'41"W	80.14'
C8	420.00'	51.68'	7°03'00"	S03°44'08"W	51.65'
C9	420.00'	50.47'	6°53'04"	S10°42'07"W	50.44'
C10	420.00'	50.03'	6°49'32"	S17°33'28"W	50.00'
C11	420.00'	50.32'	6°51'53"	S24°24'07"W	50.28'
C12	420.00'	51.37'	7°00'27"	S31°20'17"W	51.34'
C13	420.00'	18.78'	2°33'41"	S36°07'21"W	18.78'
C14	220.00'	33.27'	6°38'53"	S33°04'15"W	33.24'
C15	220.00'	50.00'	13°01'18"	S22°13'38"W	49.89'
C16	220.00'	45.82'	11°57'30"	S09°44'15"W	45.83'
C17	220.00'	43.75'	11°23'39"	S01°56'19"E	43.68'
C18	470.00'	12.74'	1°33'10"	S25°17'08"W	12.74'
C19	470.00'	54.12'	6°35'53"	S29°21'39"W	54.09'
C20	470.00'	38.91'	4°44'36"	S35°01'54"W	38.90'
C21	170.00'	43.02'	14°28'57"	S30°09'13"W	42.91'
C22	172.80'	38.24'	13°01'35"	S61°07'07"W	38.16'
C23	125.00'	24.02'	11°00'33"	S60°08'36"W	23.98'
C24	125.00'	43.43'	16°54'17"	S75°34'01"W	43.21'
C25	125.00'	8.02'	3°40'27"	S87°21'23"W	8.01'
C26	50.00'	42.73'	48°58'01"	S43°08'54"W	41.44'
C27	50.00'	34.51'	39°32'54"	S87°24'21"W	33.83'
C28	50.00'	34.70'	39°45'41"	S92°58'21"E	34.01'
C29	50.00'	34.70'	39°45'41"	S131°02'59"E	34.01'
C30	50.00'	34.70'	39°45'41"	S26°33'02"W	34.01'
C31	50.00'	34.70'	39°45'41"	S66°20'44"W	34.01'
C32	50.00'	2.59'	2°58'03"	S87°42'36"W	2.59'
C33	25.00'	22.51'	51°35'48"	S44°27'47"W	21.76'
C34	25.00'	8.28'	18°55'56"	S78°43'38"W	8.22'
C35	127.00'	24.33'	10°58'38"	S46°22'24"W	24.29'
C36	127.00'	42.55'	18°11'48"	S31°20'11"W	42.38'
C37	127.00'	40.18'	18°07'38"	N12°40'28"E	40.01'
C38	127.00'	23.10'	10°29'17"	N01°56'58"W	23.07'
C39	172.80'	21.44'	7°07'33"	S88°47'08"W	21.43'
C40	819.00'	33.84'	2°22'27"	S87°50'38"E	33.83'
C41	819.00'	25.38'	1°46'34"	S88°55'08"E	25.38'
C42	445.00'	153.39'	18°44'58"	N10°37'16"E	152.63'
C43	445.00'	131.31'	16°54'27"	N28°56'58"E	130.84'

- LEGEND**
- PERMANENT CONTROL POINT - SET (METAL MARKER WITH A METAL DISK STAMPED P.C.P.-LS3913)
  - PERMANENT REFERENCE MONUMENT - SET (4"x4" CONCRETE MARKER WITH METAL DISK STAMPED "P.R.M.-L.S. 3913")
  - PERMANENT REFERENCE MONUMENT - FOUND (4"x4" CONCRETE MARKER MARKED AS NOTED)
  - AC = ACRES
  - AL = ARC LENGTH OF CURVE
  - R = RADIUS OF CURVE
  - DEL = CENTRAL ANGLE OF CURVE
  - CH = CHORD LENGTH OF CURVE
  - CB = CHORD BEARING OF CURVE
  - RB = RADIAL BEARING
  - (NR) = NON RADIAL LINE
  - P.O.B. = POINT OF BEGINNING
  - P.O.C. = POINT OF COMMENCEMENT
  - PC = POINT OF CURVATURE
  - CT = CURVE TABLE LABEL
  - L# = LINE TABLE LABEL
  - R/W = RIGHT OF WAY
  - D.E. = DRAINAGE EASEMENT
  - U.E. = UTILITY EASEMENT
  - O.R.B. = OFFICIAL RECORD BOOK
  - D.&A.E. = DRAINAGE AND ACCESS EASEMENT



REVISION 2: COUNTY COMMENTS 4/29/03  
REVISION 1: COUNTY COMMENTS 3/24/03  
DATE: 02/27/03

- THIS PLAT PREPARED BY -

**B.S.E. CONSULTANTS, INC.**  
CONSULTING, ENGINEERING, LAND SURVEYING  
312 S. Harbor City Blvd., Suite 4, Melbourne, Florida (321) 725-3674

**PLAT OF SONOMA SOUTH PHASE 1**  
PLAT BOOK 49 PAGE 50

2002 B.S.E. CONSULTANTS, INC. H:\Projects\10629304\Drawings\10629304.dwg 04/29/2003 08:07:37 AM EDT