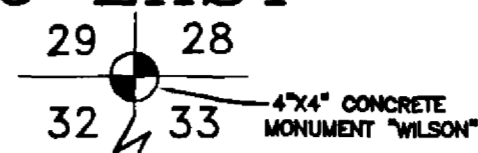


# SOLERNO BOULEVARD AND TAVISTOCK DRIVE - PHASE 1

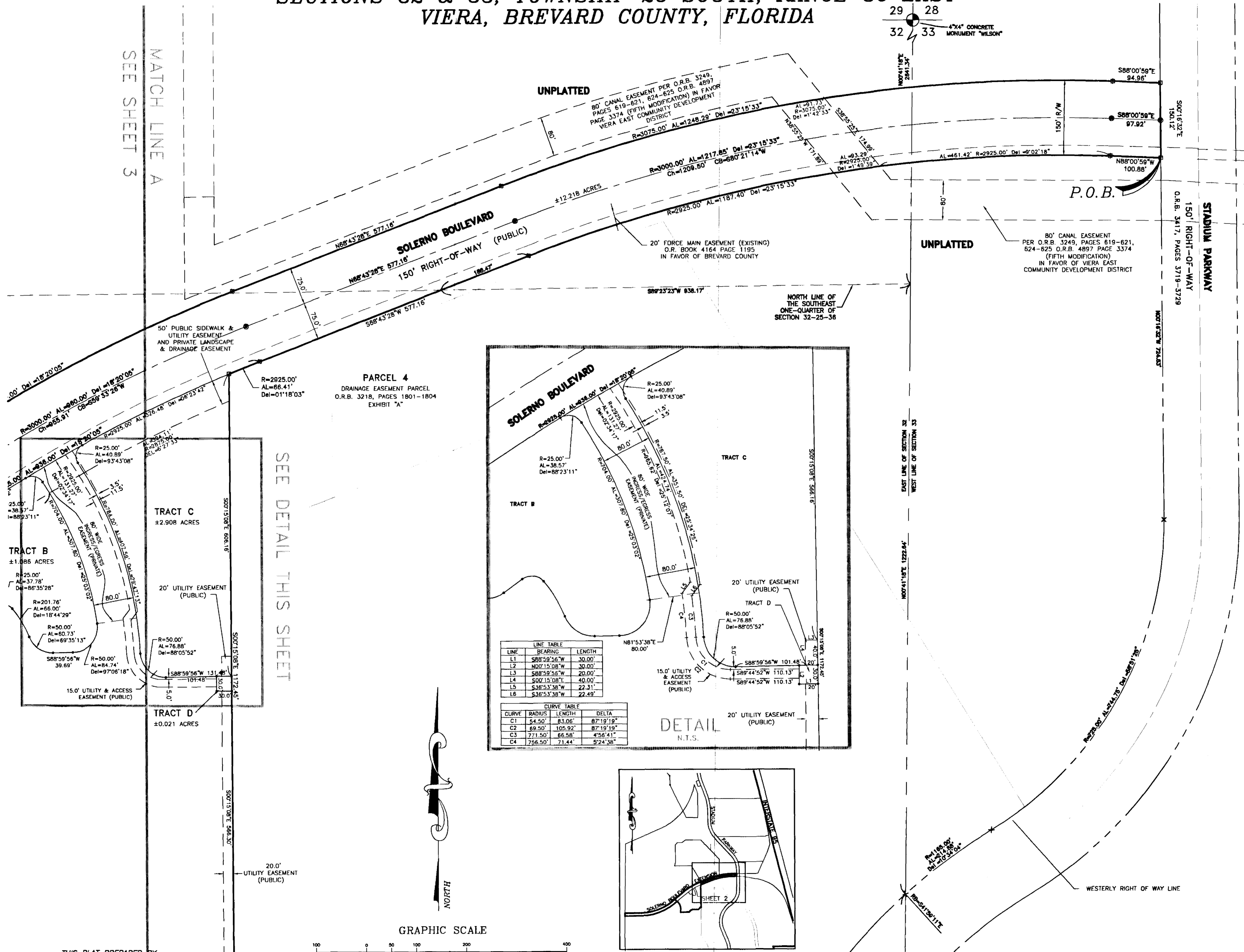
## A PORTION OF VIERA CENTRAL P.U.D., PARCEL 4, PHASE 1

### SECTIONS 32 & 33, TOWNSHIP 25 SOUTH, RANGE 36 EAST

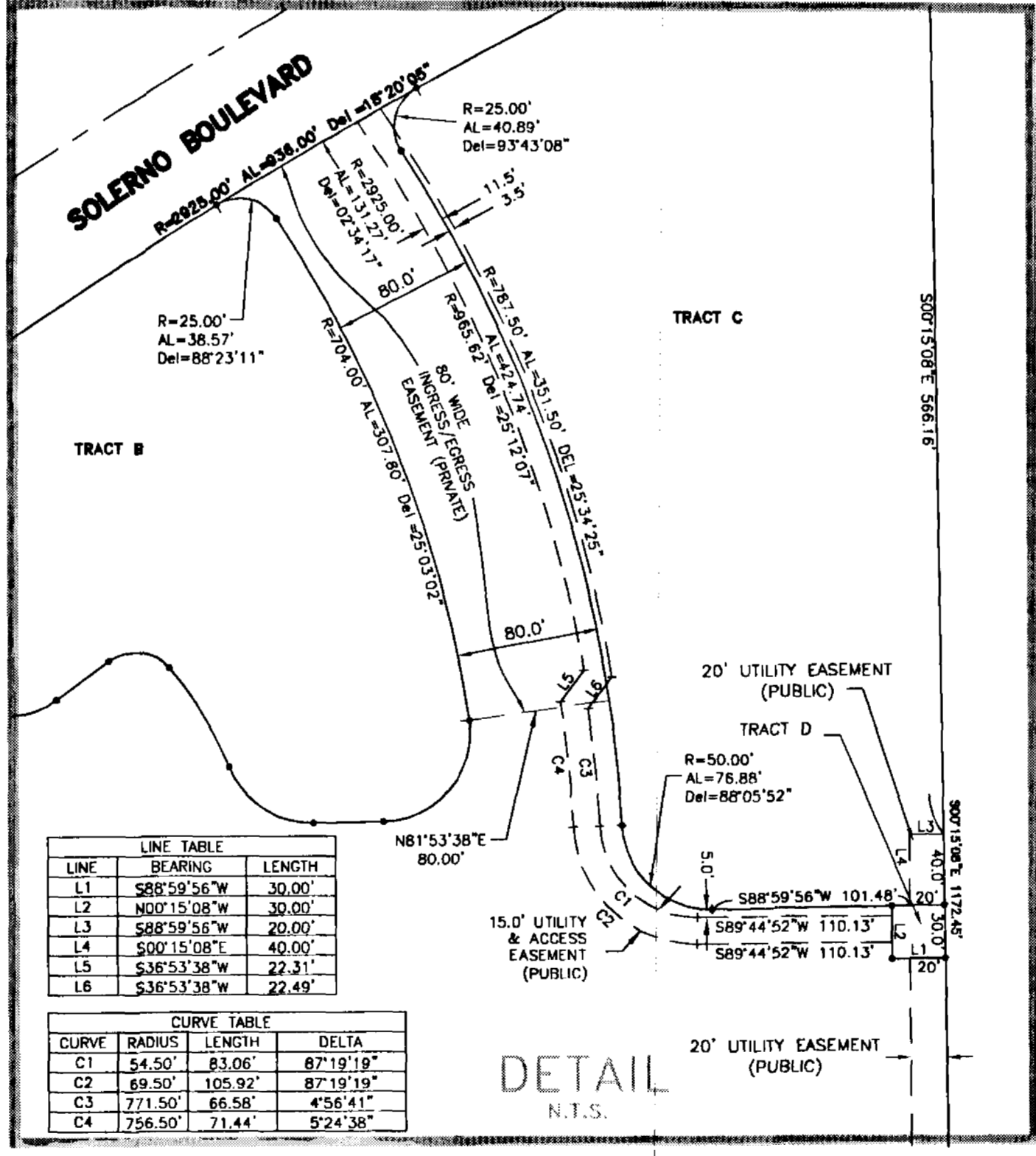
#### VIERA, BREVARD COUNTY, FLORIDA



MATCH LINE A  
SEE SHEET 3



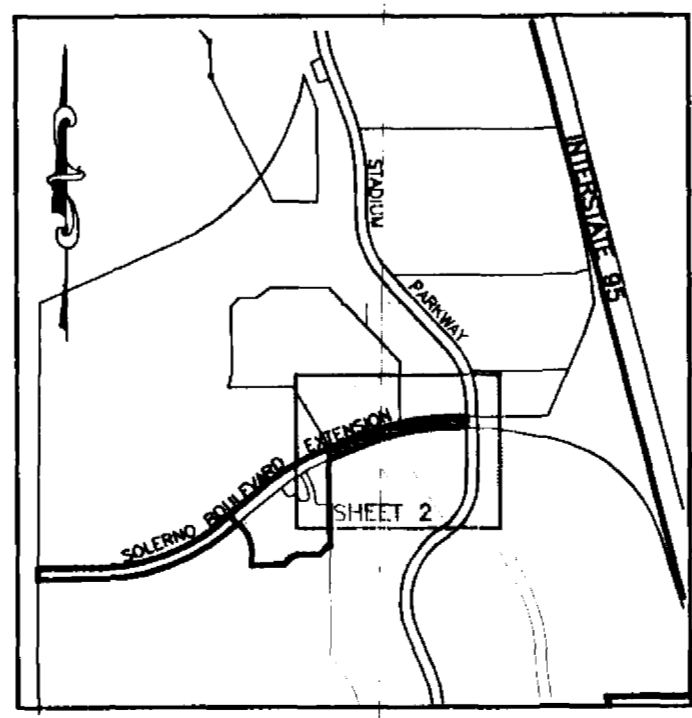
SEE DETAIL THIS SHEET



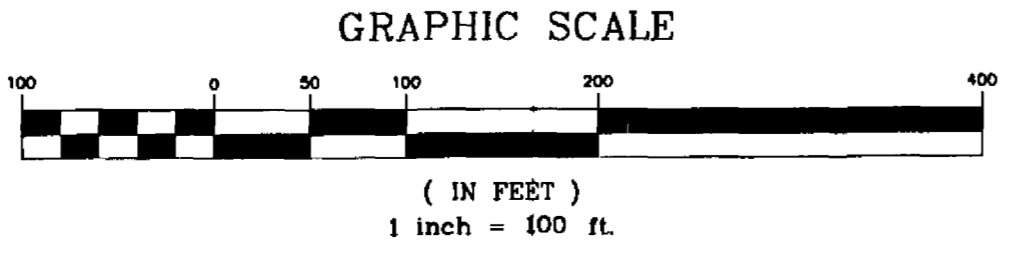
LINE	BEARING	LENGTH
L1	S88°59'56\"W	30.00'
L2	N00°15'08\"W	30.00'
L3	S88°59'56\"W	20.00'
L4	S00°15'08\"E	40.00'
L5	S36°53'38\"W	22.31'
L6	S36°53'38\"W	22.49'

CURVE	RADIUS	LENGTH	DELTA
C1	54.50'	93.06'	87°19'19\"
C2	69.50'	105.92'	87°19'19\"
C3	77.150'	66.56'	4°56'41\"
C4	756.50'	71.44'	5°24'38\"

DETAIL  
N.T.S.



KEY MAP  
N.T.S.



THIS PLAT PREPARED BY

**B.S.E. CONSULTANTS, INC.**  
 CONSULTING, ENGINEERING, LAND SURVEYING  
 312 S. Harbor City Blvd., Suite 4, Melbourne, Florida (321) 725-3874

DATE: 04/09/03

B.S.E. DWG. 10591302