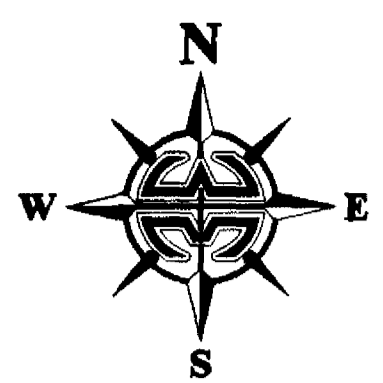
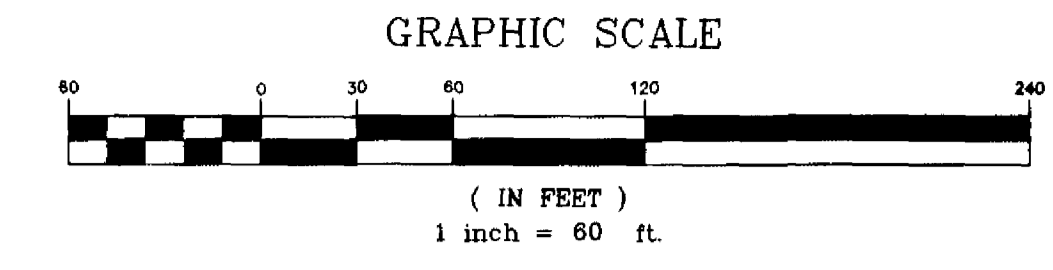


PREPARED BY:  
 WILLIAM MOTT LAND SURVEYING INC.  
 SATELLITE BEACH PROFESSIONAL CENTER  
 1275 SOUTH PATRICK DRIVE, SUITE H  
 SATELLITE BEACH, FLORIDA, 32937-3955  
 PHONE (321) 773-4323  
 PROJECT NUMBER: 2020126  
 DRAWING NAME: HAMMOCK LAKES WEST PH1.DWG  
 DRAWN BY: DANIEL D. GARNER P.S.M. 6189



# HAMMOCK LAKES WEST PHASE ONE

A REPLAT OF A PORTION OF LOTS 20, 21, 22, 27 AND 28  
 FLORIDA INDIAN RIVER LAND COMPANY, PLAT BOOK 1, PAGE 164  
 SECTION 18, TOWNSHIP 28 SOUTH, RANGE 37 EAST  
 CITY OF WEST MELBOURNE, COUNTY OF BREVARD, FLORIDA.



NOTICE: THIS PLAT, AS RECORDED IN ITS GRAPHIC FORM, IS THE OFFICIAL DEPICTION OF THE SUBDIVIDED LANDS DESCRIBED HEREIN AND WILL IN NO CIRCUMSTANCES BE SUPPLANTED IN AUTHORITY BY ANY OTHER GRAPHIC OR DIGITAL FORM OF THE PLAT. THERE MAY BE ADDITIONAL RESTRICTIONS THAT ARE NOT RECORDED ON THIS PLAT THAT MAY BE FOUND IN THE PUBLIC RECORDS OF THIS COUNTY.

CURVE	RADIUS	DELTA	LENGTH	CHORD	CHORD BEARING
C1	25.00'	90°00'00"	39.27'	35.36'	S 44°18'58" E
C2	365.00'	22°19'26"	142.21'	141.32'	S 10°28'41" E
C3	75.00'	70°32'30"	92.34'	86.62'	S 69°00'25" E
C4	197.50'	90°00'00"	310.23'	279.31'	S 04°03'46" W
C5	695.00'	18°54'26"	229.34'	228.30'	S 50°23'27" E
C6	95.00'	41°26'42"	68.72'	67.23'	S 39°07'18" E
C7	695.00'	23°43'01"	287.69'	285.64'	S 30°15'28" E
C8	50.00'	90°00'00"	78.54'	70.71'	S 44°18'58" E
C9	530.00'	22°19'26"	206.50'	205.20'	N 10°28'41" W
C10	525.00'	22°19'26"	204.55'	203.26'	S 10°28'41" E
C11	25.00'	11°32'13"	5.03'	5.03'	N 83°32'51" W
C12	50.00'	60°28'32"	52.79'	50.37'	N 45°28'34" E
C13	75.00'	4°28'09"	5.85'	5.85'	S 87°04'53" E
C14	75.00'	45°55'40"	60.12'	58.52'	S 61°52'59" E
C15	75.00'	39°38'11"	51.84'	50.81'	S 19°07'03" E
C16	365.00'	1°08'13"	7.24'	7.24'	N 00°06'56" E
C17	505.00'	4°15'51"	37.58'	37.57'	N 01°26'53" W
C18	365.00'	12°41'30"	80.85'	80.69'	N 06°47'56" W
C19	365.00'	22°19'26"	142.21'	141.32'	N 10°28'41" W
C20	365.00'	8°29'43"	54.12'	54.07'	N 17°23'33" W
C21	505.00'	9°11'46"	81.05'	80.97'	N 08°10'41" W
C22	505.00'	8°51'50"	78.13'	78.05'	N 17°22'29" W
C23	550.00'	5°21'51"	51.49'	51.47'	S 18°57'28" E
C24	550.00'	8°01'24"	77.02'	76.96'	S 12°15'50" E
C25	550.00'	7°50'57"	75.35'	75.29'	S 04°19'40" E
C26	550.00'	1°05'13"	10.43'	10.43'	S 00°08'25" W
C27	25.00'	90°00'00"	39.27'	35.36'	S 44°18'58" E
C28	365.00'	7°01'38"	44.76'	44.73'	S 02°49'45" E
C29	500.00'	8°30'27"	74.24'	74.17'	S 03°34'11" W
C30	365.00'	12°56'32"	82.45'	82.27'	S 12°48'49" E

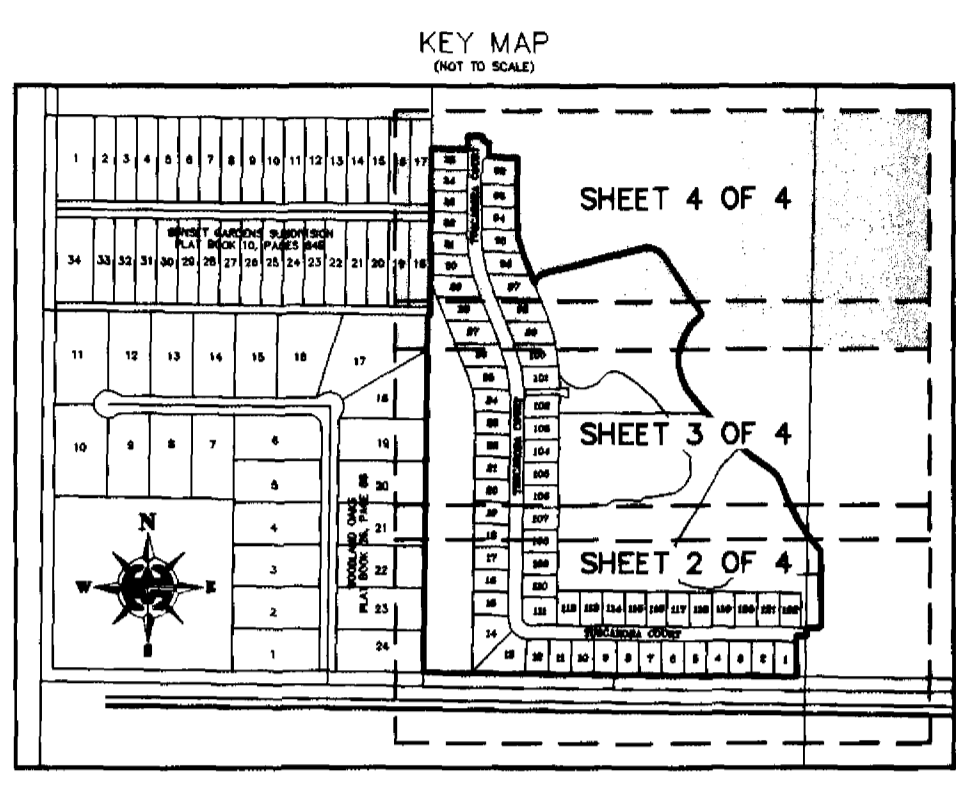
CURVE	RADIUS	DELTA	LENGTH	CHORD	CHORD BEARING
C31	500.00'	9°25'39"	82.27'	82.18'	S 12°32'14" W
C32	365.00'	2°21'19"	15.01'	15.00'	S 20°27'44" E
C33	500.00'	4°23'20"	38.30'	38.29'	S 19°26'44" E
C34	685.00'	2°51'51"	34.24'	34.24'	N 20°12'29" W
C35	685.00'	6°57'53"	83.27'	83.21'	N 15°17'38" W
C36	555.00'	1°12'58"	11.78'	11.78'	N 21°01'55" W
C37	555.00'	8°38'05"	83.64'	83.56'	N 16°08'24" W
C38	685.00'	6°46'51"	81.07'	81.02'	N 08°23'15" W
C39	555.00'	8°21'13"	80.92'	80.85'	N 07°36'45" W
C40	685.00'	5°42'51"	68.32'	68.29'	N 02°10'24" W
C41	555.00'	2°04'04"	20.03'	20.03'	N 02°24'06" W
C42	90.00'	120°19'08"	189.00'	156.13'	S 85°27'48" E
C43	555.00'	2°03'06"	19.87'	19.87'	N 00°20'31" W
C44	25.00'	90°00'00"	39.27'	35.36'	S 44°18'58" E
C45	685.00'	18°41'16"	223.42'	222.43'	N 12°17'46" W
C46	685.00'	3°38'10"	43.47'	43.46'	N 01°08'03" W
C47	695.00'	8°26'34"	102.41'	102.32'	S 45°09'31" E
C48	695.00'	9°51'46"	119.63'	119.49'	S 54°18'41" E
C49	695.00'	0°36'05"	7.30'	7.30'	S 59°32'37" E
C50	695.00'	22°25'39"	272.05'	270.31'	S 28°36'47" E
C51	695.00'	1°17'22"	15.64'	15.64'	S 41°28'17" E
C52	50.00'	88°25'33"	77.17'	69.73'	S 75°57'10" W
C53	500.00'	24°23'50"	212.91'	211.30'	N 47°38'09" W
C54	500.00'	6°15'32"	54.62'	54.59'	S 32°18'28" W
C55	25.00'	3°57'42"	1.73'	1.73'	S 31°09'32" E
C56	25.00'	56°10'34"	24.51'	23.54'	S 61°13'41" E
C57	25.00'	91°05'07"	39.74'	35.69'	N 45°08'29" E
C58	380.00'	3°10'30"	21.06'	21.06'	S 20°03'09" E

LINE	LENGTH	BEARING
L1	8.37'	S 89°17'28" E
L2	48.97'	N 00°41'02" E
L3	21.67'	S 49°03'46" W
L4	47.51'	N 89°18'58" W
L5	100.00'	S 89°18'58" W
L6	100.37'	S 21°38'24" E
L7	21.67'	S 49°03'46" W
L8	20.09'	N 02°55'06" W
L9	52.27'	N 41°51'02" W
L10	40.10'	N 88°24'19" W
L11	35.27'	N 89°18'58" W
L12	11.80'	S 00°41'02" W
L13	30.00'	N 89°18'58" W
L14	30.00'	N 89°18'58" W
L15	55.08'	S 00°41'02" W
L16	34.58'	N 89°18'58" W
L17	13.25'	S 87°37'41" E
L18	38.45'	S 44°13'21" E
L19	35.79'	S 66°56'09" E
L20	89.53'	N 86°49'39" E
L21	31.16'	N 54°16'47" E
L22	55.98'	N 89°58'17" E
L23	38.27'	S 87°48'22" E
L24	24.08'	N 89°18'58" W
L25	39.49'	N 89°33'06" E
L26	23.75'	N 86°27'31" E
L27	43.51'	N 76°46'19" E
L28	30.10'	N 50°45'54" E
L29	32.60'	N 30°05'11" E
L30	46.53'	N 04°05'53" W

LINE	LENGTH	BEARING
L31	34.53'	N 49°35'41" W
L32	32.19'	N 11°17'28" E
L33	32.96'	N 26°44'07" W
L34	28.64'	N 57°09'18" W
L35	29.37'	N 08°10'14" E
L36	55.51'	N 47°28'02" W
L37	7.58'	N 47°28'02" W
L38	20.09'	N 02°55'06" W
L39	52.27'	N 41°51'02" W
L40	40.10'	N 88°24'19" W
L41	41.98'	N 30°32'12" W
L42	49.69'	N 62°34'40" W
L43	27.53'	S 48°07'38" W
L44	37.77'	S 27°25'14" E
L45	50.56'	S 38°33'45" W
L46	22.00'	S 49°59'55" W
L47	18.00'	N 74°59'55" W
L48	32.36'	S 61°23'24" W
L49	23.50'	N 28°08'06" W
L50	19.60'	S 76°01'52" W
L51	48.06'	S 88°19'20" W
L52	28.19'	S 49°23'56" W
L53	69.35'	S 89°18'58" E
L54	102.66'	N 86°49'39" E
L55	30.41'	N 54°16'47" E
L56	47.45'	N 89°58'17" E
L57	47.05'	S 87°48'22" E
L58	24.73'	N 51°31'28" E
L59	31.55'	N 89°33'06" E
L60	26.54'	N 86°27'31" E

LINE	LENGTH	BEARING
L61	51.41'	N 76°46'19" E
L62	40.44'	N 50°45'54" E
L63	44.85'	N 30°05'11" E
L64	64.70'	N 04°05'53" W
L65	30.32'	N 49°35'41" W
L66	26.11'	N 11°17'28" E
L67	48.37'	N 26°44'07" W
L68	19.41'	N 57°09'18" W
L69	6.32'	N 08°10'14" E
L70	100.44'	S 89°18'58" E
L71	13.65'	S 63°11'13" W
L72	30.39'	N 56°23'37" W
L73	18.93'	S 53°06'07" W
L74	15.84'	S 76°43'43" W
L75	31.63'	N 68°48'52" W
L76	25.73'	S 48°00'10" W
L77	30.09'	S 62°23'05" W
L78	70.56'	S 25°20'08" W
L79	76.20'	S 39°05'04" W
L80	54.35'	S 37°04'53" W
L81	37.33'	S 11°27'40" W
L82	70.72'	S 34°35'56" W
L83	50.03'	S 03°50'59" W
L84	61.48'	S 16°22'50" E
L85	43.73'	S 49°50'53" E
L86	50.46'	S 85°08'06" E
L87	38.70'	N 85°50'35" E
L88	14.30'	N 67°14'47" E
L89	23.77'	N 08°11'15" E
L90	61.17'	N 60°31'44" E

LINE	LENGTH	BEARING
L91	45.05'	S 86°44'32" E
L92	19.26'	N 56°23'11" E
L93	19.84'	S 74°06'42" E
L94	44.35'	N 84°57'31" E
L95	31.20'	N 76°08'06" E
L96	23.78'	S 66°06'32" E
L97	40.70'	N 82°04'56" E
L98	40.82'	N 53°24'37" E
L99	26.92'	N 32°51'37" E
L100	22.92'	N 36°22'37" E
L101	99.87'	S 40°50'40" W
L102	207.56'	S 30°22'56" W
L103	109.27'	S 32°04'49" W
L104	61.36'	S 03°50'59" W
L105	73.46'	S 16°22'50" E
L106	56.60'	S 70°34'46" E
L107	52.44'	S 85°08'06" E
L108	39.92'	N 85°50'35" E
L109	17.95'	N 67°14'47" E
L110	21.67'	N 35°59'58" E
L111	49.03'	N 60°31'44" E
L112	45.95'	S 86°59'14" E
L113	3.31'	N 56°23'11" E
L114	234.58'	N 89°18'58" E
L115	15.00'	N 89°18'58" W
L116	18.57'	S 54°33'16" W
L117	15.58'	S 52°38'48" W
L118	15.62'	N 52°12'47" E
L119	15.40'	S 76°14'49" E
L120	15.40'	N 76°14'49" W



- LEGEND:**
- = 4"x4" CONCRETE MONUMENT WITH NAIL AND DISK MARKED "PRM PLS 5060" (SET)
  - = 4"x4" CONCRETE MONUMENT WITH NAIL AND DISK MARKED "PRM PLS 5060" (FOUND)
  - = NAIL AND DISK MARKED "PCP PLS 5060" (SET)
  - △ = NAIL AND DISK MARKED "PCP PLS 5060" (FOUND)
  - ▲ = NAIL AND DISK MARKED "PRM PLS 5060" (SET)
  - ▲ = NAIL AND DISK MARKED "PRM PLS 5060" (FOUND)
  - P/U&E = PUBLIC UTILITIES AND DRAINAGE EASEMENT
  - C# = CURVE NUMBER FOR CURVE TABLE
  - L# = LINE NUMBER FOR LINE TABLE
  - R/W = RIGHT-OF-WAY
  - P.B. = PLAT BOOK
  - PG. = PAGE
  - RP. = RADIUS POINT
  - POL. = POINT-ON-LINE
  - POC. = POINT-ON-CURVE
  - PI. = POINT-OF-INTERSECTION
  - PT. = POINT-OF-TANGENCY
  - PC. = POINT-OF-CURVATURE
  - PRC. = POINT-OF-REVERSE CURVATURE
  - PCC. = POINT-OF-COMPOUND CURVATURE
  - P.O.B. = POINT-OF-BEGINNING
  - P.O.C. = POINT-OF-COMMENCEMENT
  - PRM. = PERMANENT REFERENCE MONUMENT
  - PCP. = PERMANENT CONTROL POINT
  - (R) = RADIAL
  - (NR) = NON-RADIAL
  - ESMT = EASEMENT
  - O.R.B./O.R.Book = OFFICIAL RECORDS BOOK
  - H.O.A. = HOME OWNERS ASSOCIATION
  - LB = LICENSED BUSINESS
  - PLS = PROFESSIONAL LAND SURVEYOR
  - PSM = PROFESSIONAL SURVEYOR AND MAPPER
  - R = RADIUS
  - D = DELTA
  - L = LENGTH
  - CD = CHORD DISTANCE
  - CB = CHORD BEARING

