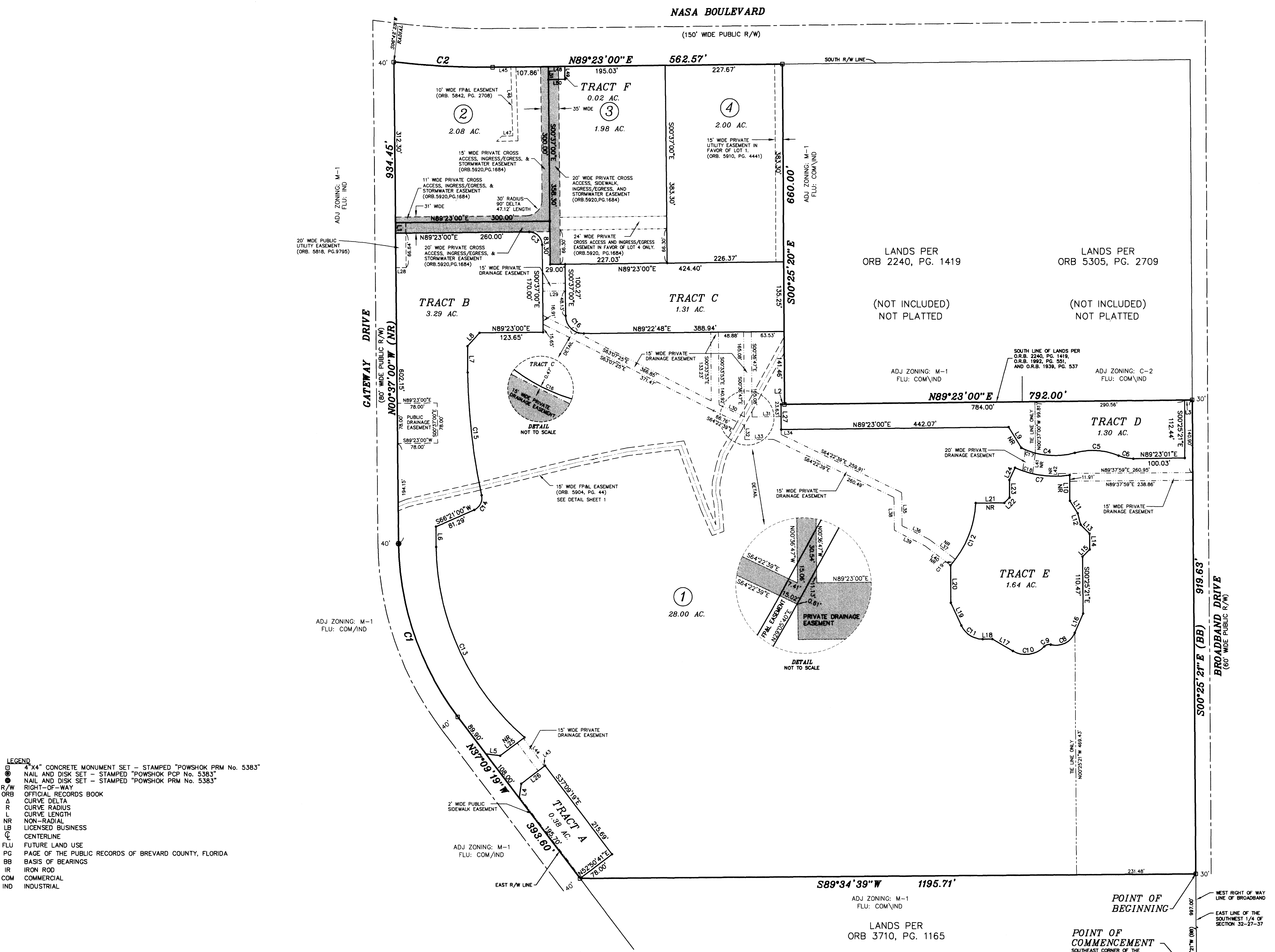


**"MIMA OF MELBOURNE"**  
LYING IN SECTION 32, TOWNSHIP 27 SOUTH, RANGE 37 EAST,  
CITY OF MELBOURNE, BREVARD COUNTY, FLORIDA

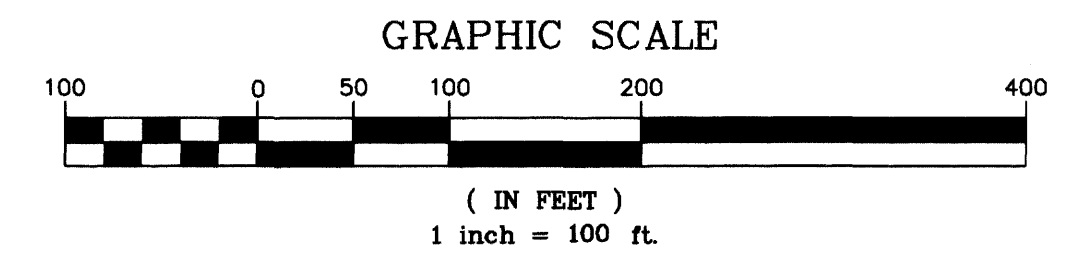
CURVE TABLE					
CURVE	RADIUS	LENGTH	DELTA	CHORD	CHD BEARING
C1	566.34'	361.17'	36°32'19"	355.08'	S18°53'10"E
C2	1507.39'	192.66'	7°19'23"	192.53'	S86°57'18"E
C3	25.00'	39.27'	90°00'00"	35.36'	N45°37'00"W
C4	145.50'	106.65'	41°59'47"	104.28'	S84°41'19"E
C5	128.50'	86.91'	38°45'04"	85.26'	N86°18'40"W
C6	71.50'	29.56'	23°41'04"	29.35'	S78°46'40"E
C7	185.50'	108.76'	33°35'31"	107.21'	S82°23'19"E
C8	40.00'	56.64'	81°08'09"	52.03'	N63°46'43"E
C9	13.00'	13.74'	60°32'32"	13.11'	S74°04'32"W
C10	50.00'	66.69'	76°24'59"	61.85'	N82°00'45"E
C11	45.00'	51.85'	66°01'17"	49.03'	S57°36'21"E
C12	192.00'	132.80'	39°37'50"	130.17'	N21°59'01"E
C13	492.50'	419.67'	48°49'21"	407.08'	S24°56'44"E
C14	25.00'	34.35'	78°43'57"	31.71'	N26°59'01"E
C15	1178.50'	240.06'	11°40'17"	239.65'	S06°32'49"E
C16	35.00'	54.98'	90°00'12"	49.50'	S45°37'06"E
C17	145.50'	20.39'	8°01'51"	20.38'	S71°13'38"E
C18	185.50'	20.24'	6°15'05"	20.23'	S73°38'11"E
C19	192.00'	15.02'	4°28'51"	15.01'	N39°33'30"E

LINE TABLE		
LINE	LENGTH	BEARING
L1	20.00	N00°36'36"W
L2	7.00	N89°23'00"E
L3	15.00	N89°23'00"E
L4	28.29	S07°49'32"W
L5	28.27	S82°10'28"E
L6	39.51	N00°37'00"W
L7	51.01	N00°42'40"W
L8	34.82	N42°15'48"E
L9	46.98	S31°40'04"E
L10	49.92	S00°25'21"E
L11	28.64	S31°51'52"E
L12	22.56	S14°13'28"E
L13	24.99	S44°40'13"E
L14	30.74	S00°25'21"E
L15	19.48	S45°24'07"W
L16	40.94	S23°12'38"W
L17	46.00	N59°46'45"W
L18	18.77	S89°23'00"W
L19	48.69	N24°35'43"W
L20	72.88	N00°25'21"W
L21	56.20	N89°23'00"E
L22	14.17	N44°28'50"E
L23	34.28	N00°25'21"W
L24	26.02	N24°24'27"E
L25	59.60	N52°52'32"E
L26	58.00	N52°52'32"E
L27	49.00	S00°25'20"E
L28	20.00	N90°00'00"E
L29	44.00	S89°23'00"W
L30	54.62	S64°22'39"E
L31	55.98	N89°23'00"E
L32	27.28	S00°36'47"E
L33	55.34	N89°23'00"E
L34	9.55	N00°25'20"W
L35	64.11	S00°36'42"E
L36	59.09	S63°07'10"E
L37	64.01	S52°44'02"E
L38	63.89	S00°36'42"E
L39	66.83	S63°07'10"E
L40	62.05	S52°44'02"E
L41	40.24	S07°44'07"W
L42	5.17	S00°22'01"E
L43	1.50'	S52°52'32"W
L44	68.00'	N37°09'19"W
L45	35.17	N89°23'00"E
L46	133.69	S01°33'41"E
L47	20.98	N90°00'00"W
L48	32.00'	N89°23'00"E
L49	25.00'	S00°37'00"E
L50	32.00'	S89°23'00"W
L51	25.00'	N00°37'00"W



- LEGEND**
- 4"x4" CONCRETE MONUMENT SET - STAMPED "POWSHOK PRM No. 5383"
  - NAIL AND DISK SET - STAMPED "POWSHOK PCP No. 5383"
  - NAIL AND DISK SET - STAMPED "POWSHOK PRM No. 5383"
  - R/W RIGHT-OF-WAY
  - ORB OFFICIAL RECORDS BOOK
  - △ CURVE DELTA
  - R CURVE RADIUS
  - L CURVE LENGTH
  - NR NON-RADIAL
  - LB LICENSED BUSINESS
  - ⊙ CENTERLINE
  - FLU FUTURE LAND USE
  - PG PAGE OF THE PUBLIC RECORDS OF BREVARD COUNTY, FLORIDA
  - BB BASIS OF BEARINGS
  - IR IRON ROD
  - COM COMMERCIAL
  - IND INDUSTRIAL

**NOTICE:** THIS PLAT, AS RECORDED IN ITS GRAPHIC FORM, IS THE OFFICIAL DEPICTION OF THE SUBDIVIDED LANDS DESCRIBED HEREIN AND WILL IN NO CIRCUMSTANCES BE SUPPLANTED IN AUTHORITY BY ANY OTHER GRAPHIC OR DIGITAL FORM OF THE PLAT. THERE MAY BE ADDITIONAL RESTRICTIONS THAT ARE NOT RECORDED ON THIS PLAT THAT MAY BE FOUND IN THE PUBLIC RECORDS OF THIS COUNTY.



LANDS PER ORB 3710, PG. 1165

(NOT INCLUDED) NOT PLATTED

**POINT OF COMMENCEMENT**  
SOUTHWEST CORNER OF THE SOUTHWEST 1/4 OF SECTION 32, TOWNSHIP 27 SOUTH, RANGE 37 EAST FOUND 5/6" IR "MOTT #3806"

— ENGINEERING PREPARED BY —  
**CONSTRUCTION ENGINEERING GROUP**  
2651 EAU GALLE BOULEVARD, SUITE A  
MELBOURNE, FLORIDA 32935  
(321) 253-1221

— PLAT PREPARED BY —  
**AAL LAND SURVEYING SERVICES, INC.**  
3970 MINTON ROAD  
WEST MELBOURNE, FLORIDA 32904  
(321) 766-8110

PROJECT # 24121-PLAT  
DATED 7/20/09