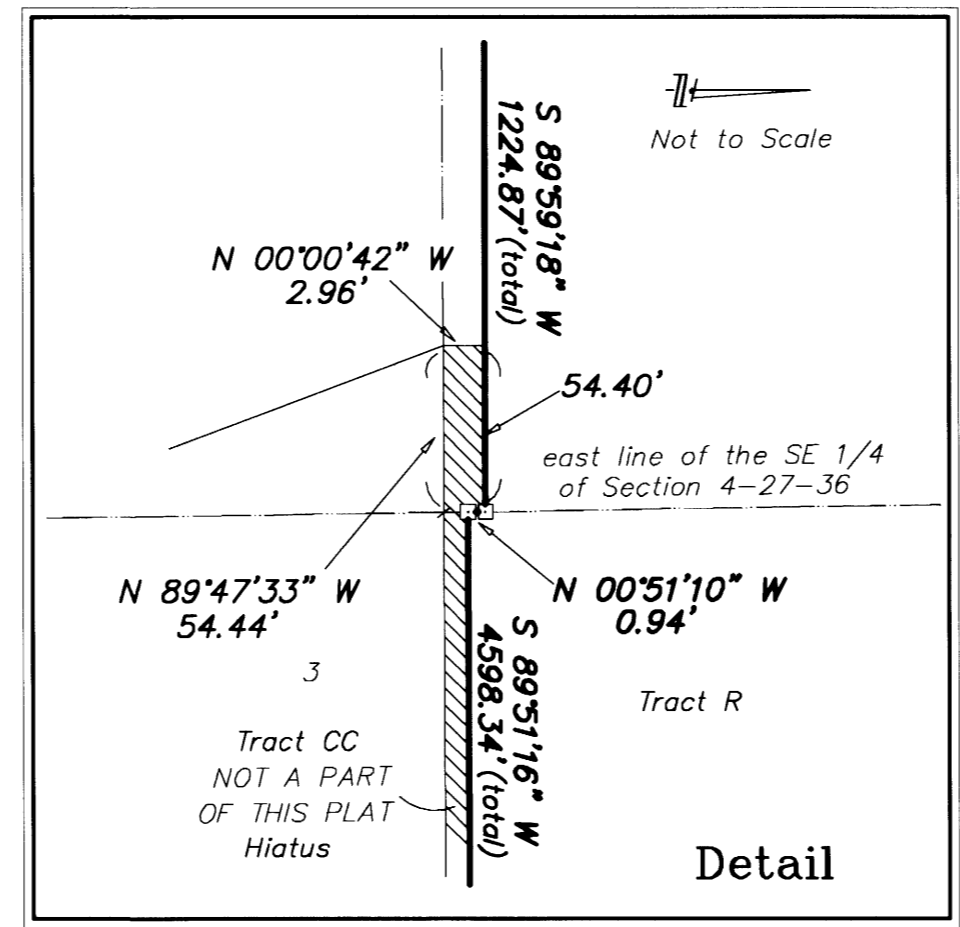
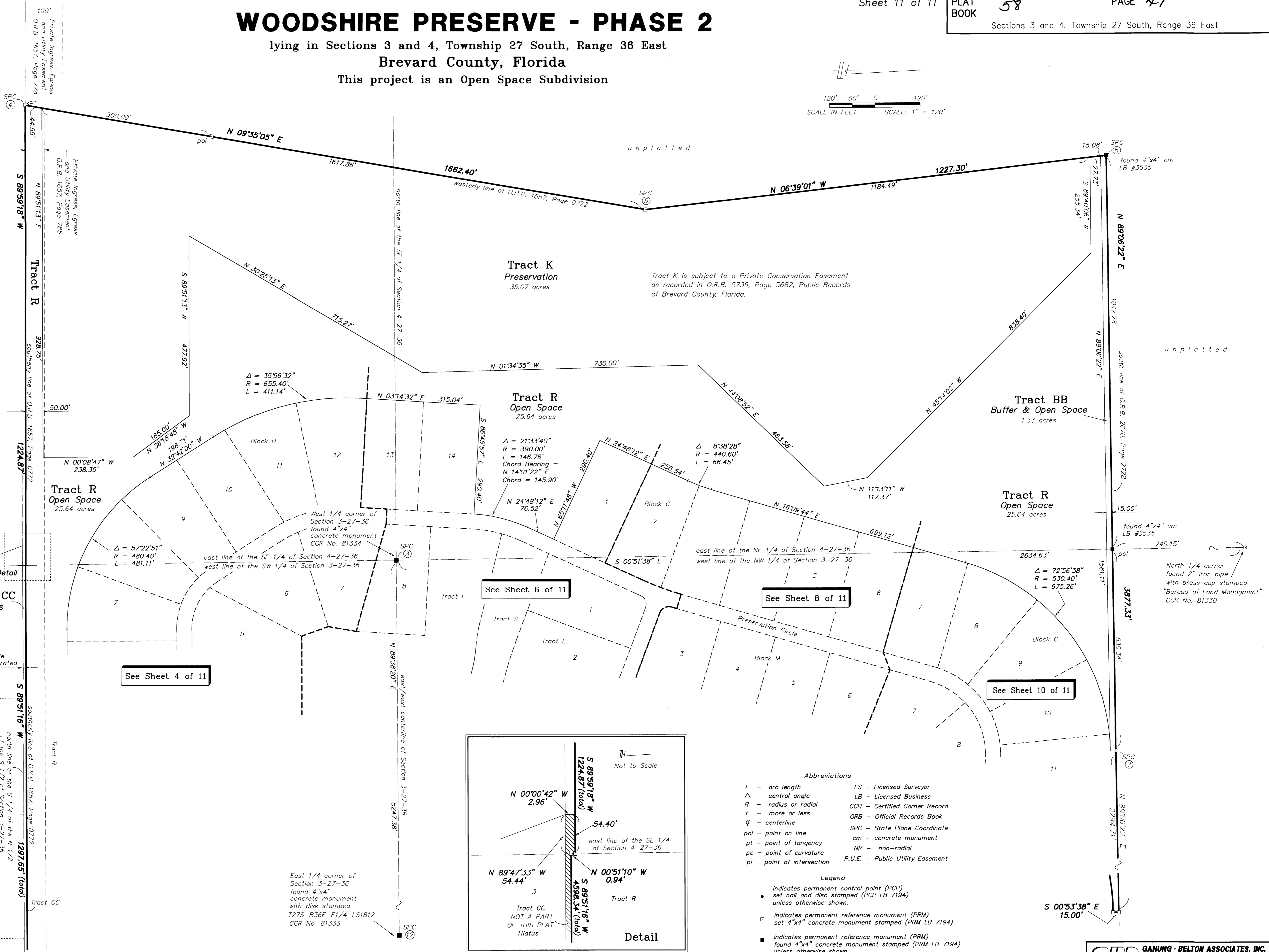
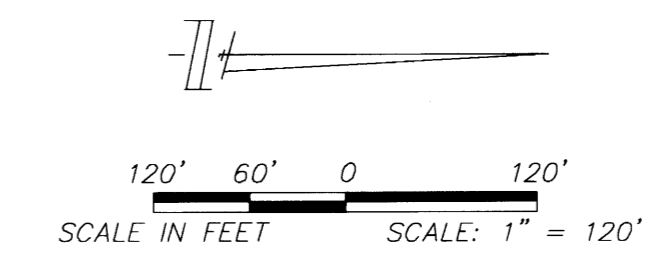
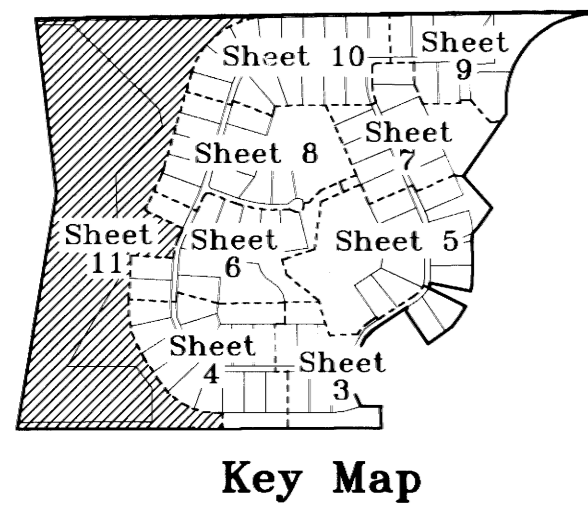


WOODSHIRE PRESERVE - PHASE 2

lying in Sections 3 and 4, Township 27 South, Range 36 East

Brevard County, Florida

This project is an Open Space Subdivision



- Abbreviations**
- L - arc length
 - Δ - central angle
 - R - radius or radial
 - ± - more or less
 - ℄ - centerline
 - pol - point on line
 - pt - point of tangency
 - pc - point of curvature
 - pi - point of intersection
 - LS - Licensed Surveyor
 - LB - Licensed Business
 - CCR - Certified Corner Record
 - ORB - Official Records Book
 - SPC - State Plane Coordinate
 - cm - concrete monument
 - NR - non-radial
 - P.U.E. - Public Utility Easement

- Legend**
- indicates permanent control point (PCP)
 - set nail and disc stamped (PCP LB 7194) unless otherwise shown.
 - indicates permanent reference monument (PRM)
 - set 4"x4" concrete monument stamped (PRM LB 7194)
 - indicates permanent reference monument (PRM) found 4"x4" concrete monument stamped (PRM LB 7194) unless otherwise shown.

THE WILLOWS PHASE TWO
Plat Book 42, Pages 57 and 58