

WOODSHIRE PRESERVE - PHASE 2

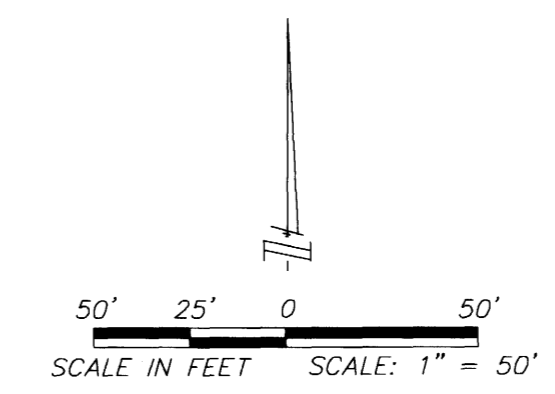
lying in Sections 3 and 4, Township 27 South, Range 36 East

Brevard County, Florida

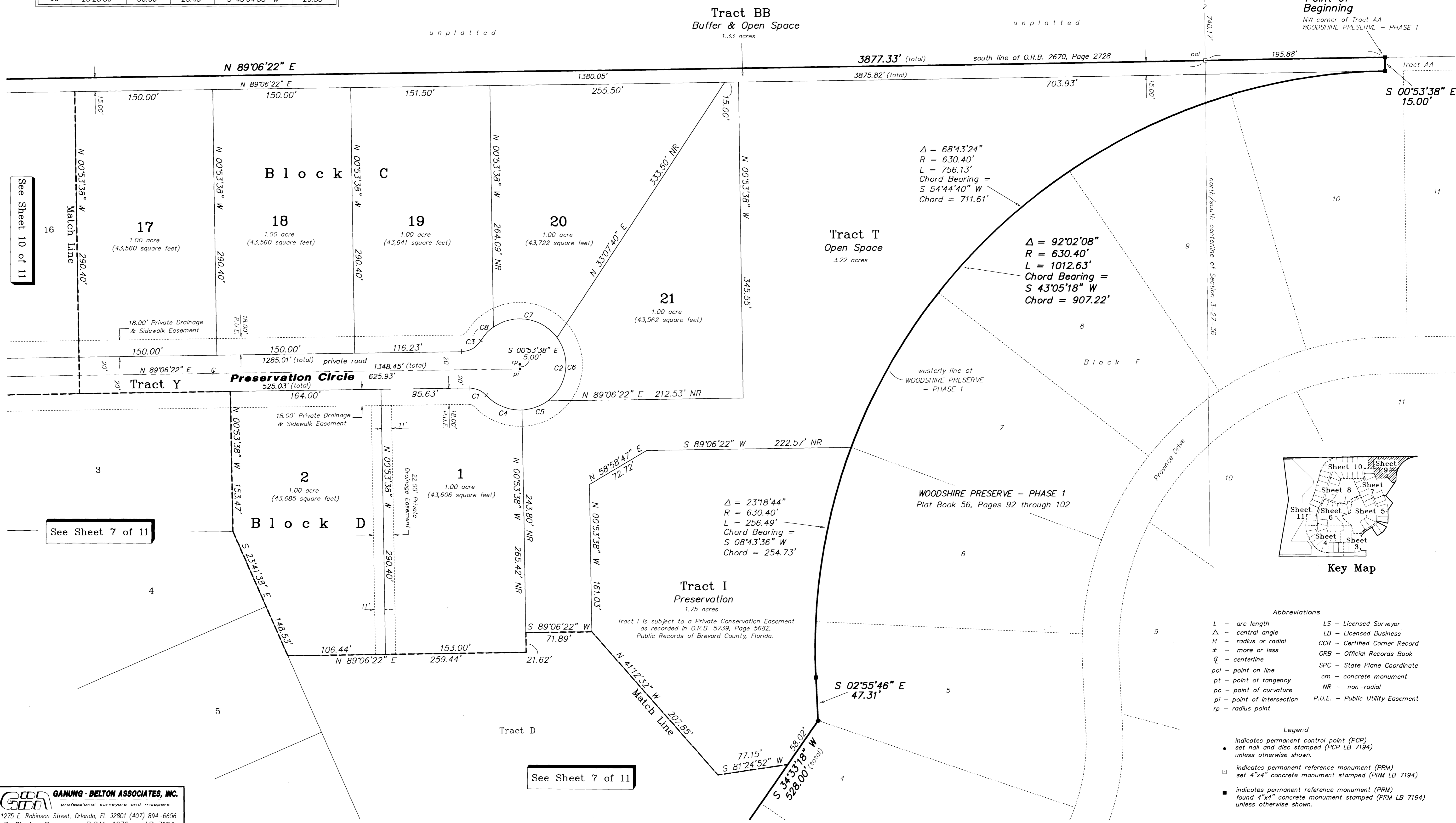
This project is an Open Space Subdivision

CURVE TABLE

CURVE	DELTA	RADIUS	LENGTH	CHORD BEARING	CHORD
C1	48°11'23"	25.00'	21.03'	N 66°47'57" W	20.41'
C2	285°57'31"	50.00'	249.55'	N 05°41'01" W	60.21'
C3	57°46'09"	25.00'	25.21'	N 60°13'18" E	24.15'
C4	49°52'09"	50.00'	43.52'	S 67°38'20" E	42.16'
C5	34°54'04"	50.00'	30.46'	N 69°58'34" E	29.99'
C6	88°51'14"	50.00'	77.54'	N 08°05'55" E	70.00'
C7	88°51'14"	50.00'	77.54'	N 80°45'20" W	70.00'
C8	23°28'50"	50.00'	20.49'	S 43°04'38" W	20.35'



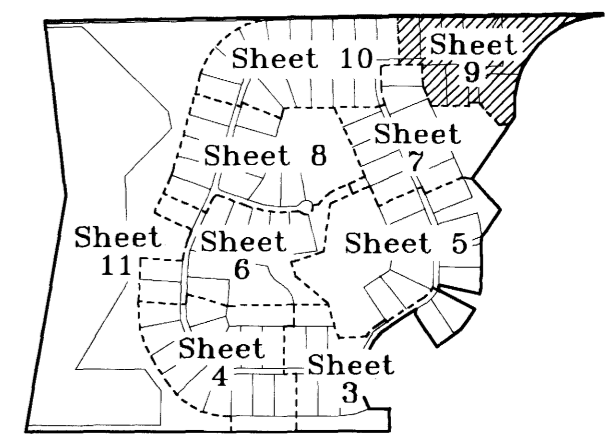
North 1/4 corner found 5/8" iron rod & cap (LB 226) CCR No. 81331



$\Delta = 68^{\circ}43'24''$
 $R = 630.40'$
 $L = 756.13'$
 Chord Bearing = $S 54^{\circ}44'40'' W$
 Chord = 711.61'

$\Delta = 92^{\circ}02'08''$
 $R = 630.40'$
 $L = 1012.63'$
 Chord Bearing = $S 43^{\circ}05'18'' W$
 Chord = 907.22'

$\Delta = 23^{\circ}18'44''$
 $R = 630.40'$
 $L = 256.49'$
 Chord Bearing = $S 08^{\circ}43'36'' W$
 Chord = 254.73'



- Abbreviations**
- L - arc length
 - Δ - central angle
 - R - radius or radial
 - \pm - more or less
 - \hat{C} - centerline
 - pol - point on line
 - pt - point of tangency
 - pc - point of curvature
 - pi - point of intersection
 - rp - radius point
 - LS - Licensed Surveyor
 - LB - Licensed Business
 - CCR - Certified Corner Record
 - ORB - Official Records Book
 - SPC - State Plane Coordinate
 - cm - concrete monument
 - NR - non-radial
 - P.U.E. - Public Utility Easement

- Legend**
- indicates permanent control point (PCP)
 - set nail and disc stamped (PCP LB 7194) unless otherwise shown.
 - indicates permanent reference monument (PRM)
 - set 4"x4" concrete monument stamped (PRM LB 7194)
 - indicates permanent reference monument (PRM)
 - found 4"x4" concrete monument stamped (PRM LB 7194) unless otherwise shown.