

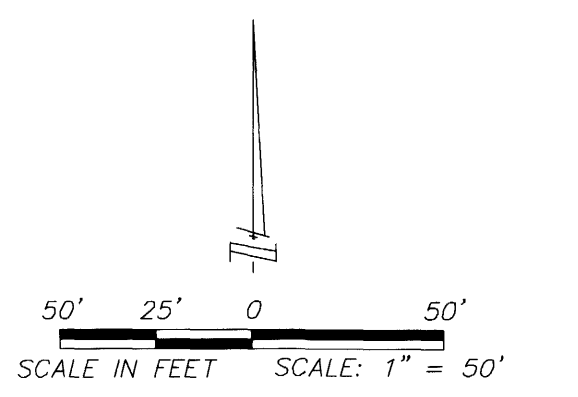
WOODSHIRE PRESERVE - PHASE 2

lying in Sections 3 and 4, Township 27 South, Range 36 East

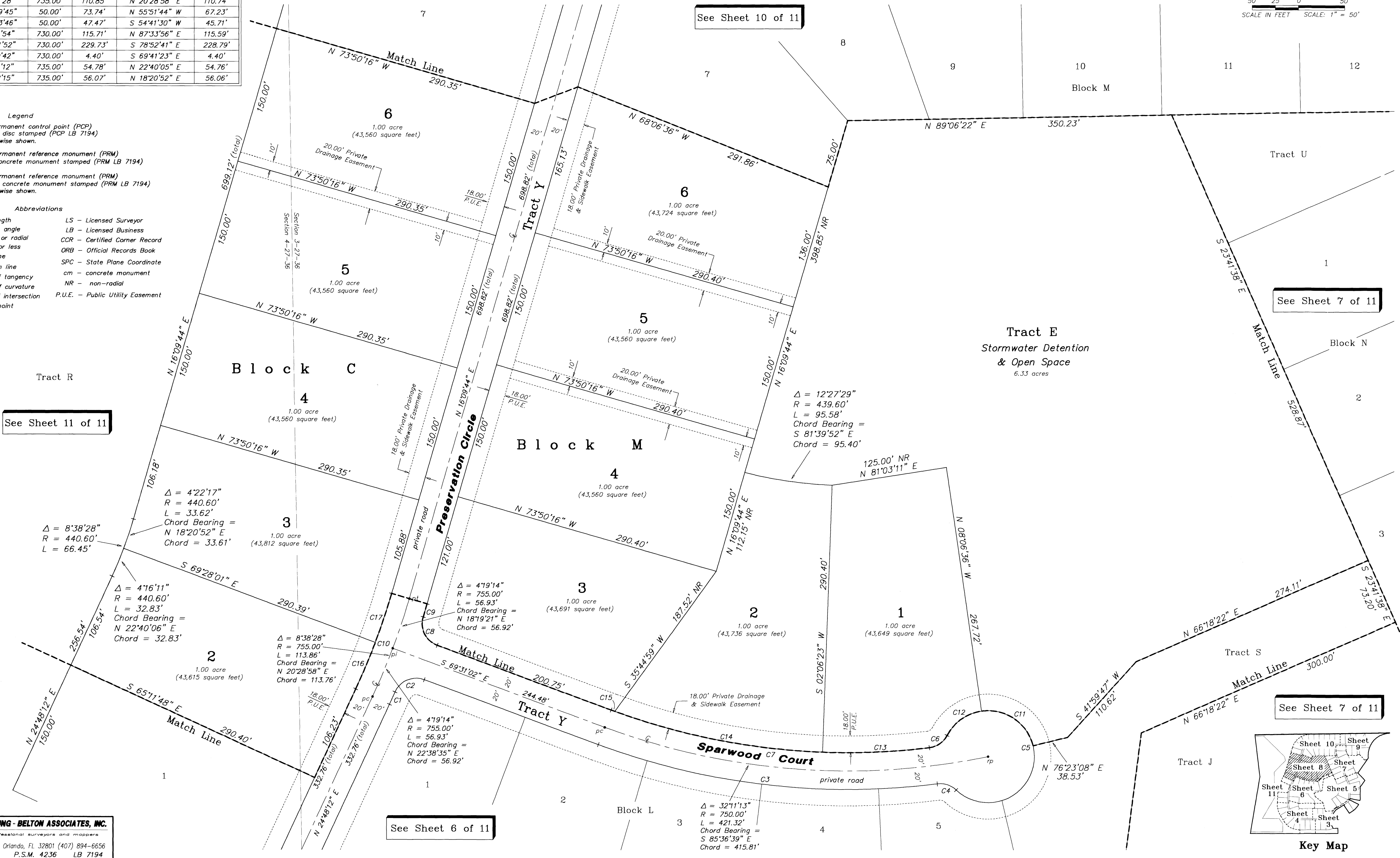
Brevard County, Florida

This project is an Open Space Subdivision

CURVE	DELTA	RADIUS	LENGTH	CHORD BEARING	CHORD
C1	1°05'45"	775.00'	14.82'	N 24°15'19" E	14.82'
C2	86°46'31"	25.00'	37.86'	S 67°05'42" W	34.35'
C3	27°44'01"	770.00'	372.71'	S 83°23'03" E	369.09'
C4	50°56'09"	25.00'	22.23'	N 71°46'59" W	21.50'
C5	286°11'29"	50.00'	249.75'	N 09°24'38" W	60.05'
C6	55°31'52"	25.00'	24.23'	N 55°15'33" E	23.29'
C7	27°27'28"	730.00'	349.84'	S 83°14'46" E	346.50'
C8	86°46'31"	25.00'	37.86'	S 26°07'47" E	34.35'
C9	1°05'45"	775.00'	14.82'	N 16°42'37" E	14.82'
C10	8°38'28"	735.00'	110.85'	N 20°28'58" E	110.74'
C11	84°29'45"	50.00'	73.74'	N 55°51'44" W	67.23'
C12	54°23'46"	50.00'	47.47'	S 54°41'30" W	45.71'
C13	9°04'54"	730.00'	115.71'	N 87°33'56" E	115.59'
C14	18°01'52"	730.00'	229.73'	S 78°52'41" E	228.79'
C15	0°20'42"	730.00'	4.40'	S 69°41'23" E	4.40'
C16	4°16'12"	735.00'	54.78'	N 22°40'05" E	54.76'
C17	4°22'15"	735.00'	56.07'	N 18°20'52" E	56.06'



- Legend**
- indicates permanent control point (PCP) set nail and disc stamped (PCP LB 7194) unless otherwise shown.
 - indicates permanent reference monument (PRM) set 4"x4" concrete monument stamped (PRM LB 7194)
 - indicates permanent reference monument (PRM) found 4"x4" concrete monument stamped (PRM LB 7194) unless otherwise shown.
- Abbreviations**
- L - arc length
 - Δ - central angle
 - R - radius or radial
 - ± - more or less
 - Q - centerline
 - pol - point on line
 - pt - point of tangency
 - pc - point of curvature
 - pi - point of intersection
 - rp - radius point
 - LS - Licensed Surveyor
 - LB - Licensed Business
 - CCR - Certified Corner Record
 - ORB - Official Records Book
 - SPC - State Plane Coordinate
 - cm - concrete monument
 - NR - non-radial
 - P.U.E. - Public Utility Easement



See Sheet 11 of 11

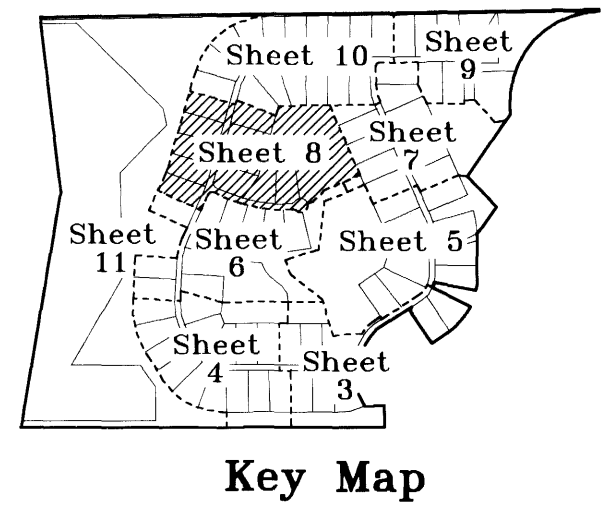
See Sheet 10 of 11

See Sheet 7 of 11

See Sheet 7 of 11

See Sheet 6 of 11

GANUNG - BELTON ASSOCIATES, INC.
 professional surveyors and mappers
 1275 E. Robinson Street, Orlando, FL 32801 (407) 894-6656
 R. Clayton Ganung P.S.M. 4236 LB 7194



Key Map