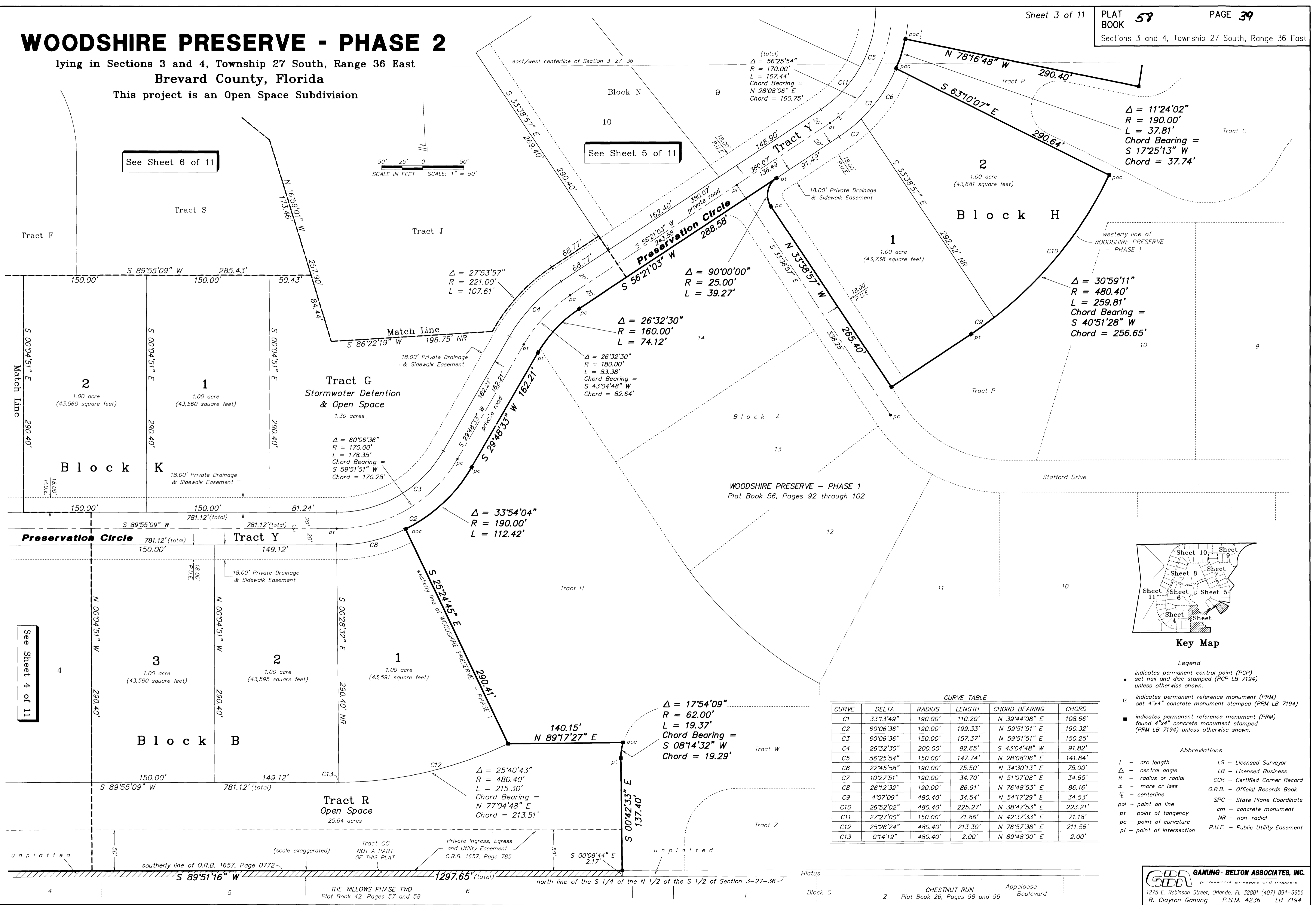
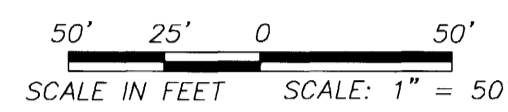


# WOODSHIRE PRESERVE - PHASE 2

lying in Sections 3 and 4, Township 27 South, Range 36 East  
Brevard County, Florida  
This project is an Open Space Subdivision

See Sheet 6 of 11

See Sheet 5 of 11



$\Delta = 11^{\circ}24'02''$   
 $R = 190.00'$   
 $L = 37.81'$   
Chord Bearing =  
 $S 17^{\circ}25'13'' W$   
Chord = 37.74'

$\Delta = 30^{\circ}59'11''$   
 $R = 480.40'$   
 $L = 259.81'$   
Chord Bearing =  
 $S 40^{\circ}51'28'' W$   
Chord = 256.65'

$\Delta = 60^{\circ}06'36''$   
 $R = 170.00'$   
 $L = 178.35'$   
Chord Bearing =  
 $S 59^{\circ}51'51'' W$   
Chord = 170.28'

$\Delta = 33^{\circ}54'04''$   
 $R = 190.00'$   
 $L = 112.42'$

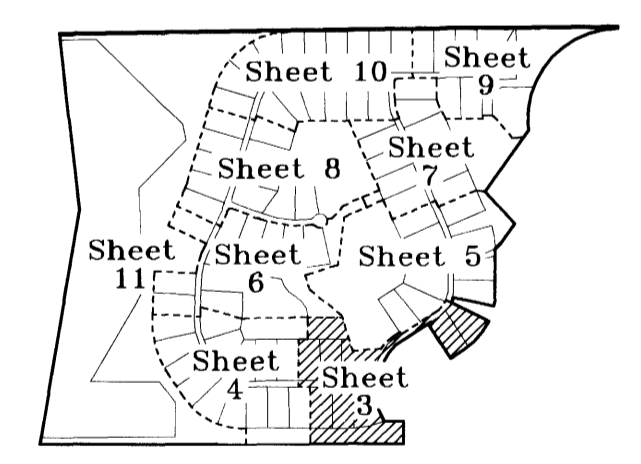
$\Delta = 26^{\circ}32'30''$   
 $R = 160.00'$   
 $L = 74.12'$

$\Delta = 26^{\circ}32'30''$   
 $R = 180.00'$   
 $L = 83.38'$   
Chord Bearing =  
 $S 43^{\circ}04'48'' W$   
Chord = 82.64'

$\Delta = 90^{\circ}00'00''$   
 $R = 25.00'$   
 $L = 39.27'$

$\Delta = 17^{\circ}54'09''$   
 $R = 62.00'$   
 $L = 19.37'$   
Chord Bearing =  
 $S 08^{\circ}14'32'' W$   
Chord = 19.29'

$\Delta = 25^{\circ}40'43''$   
 $R = 480.40'$   
 $L = 215.30'$   
Chord Bearing =  
 $N 77^{\circ}04'48'' E$   
Chord = 213.51'



Key Map

Legend

- indicates permanent control point (PCP)
- set nail and disc stamped (PCP LB 7194) unless otherwise shown.
- indicates permanent reference monument (PRM)
- set 4"x4" concrete monument stamped (PRM LB 7194)
- indicates permanent reference monument (PRM) found 4"x4" concrete monument stamped (PRM LB 7194) unless otherwise shown.

Abbreviations

- L - arc length
- Δ - central angle
- R - radius or radial
- ± - more or less
- CL - centerline
- pol - point on line
- pt - point of tangency
- pc - point of curvature
- pi - point of intersection
- LS - Licensed Surveyor
- LB - Licensed Business
- CCR - Certified Corner Record
- O.R.B. - Official Records Book
- SPC - State Plane Coordinate
- cm - concrete monument
- NR - non-radial
- P.U.E. - Public Utility Easement

CURVE TABLE					
CURVE	DELTA	RADIUS	LENGTH	CHORD BEARING	CHORD
C1	33°13'49"	190.00'	110.20'	N 39°44'08" E	108.66'
C2	60°06'36"	190.00'	199.33'	N 59°51'51" E	190.32'
C3	60°06'36"	150.00'	157.37'	N 59°51'51" E	150.25'
C4	26°32'30"	200.00'	92.65'	S 43°04'48" W	91.82'
C5	56°25'54"	150.00'	147.74'	N 28°08'06" E	141.84'
C6	22°45'58"	190.00'	75.50'	N 34°30'13" E	75.00'
C7	10°27'51"	190.00'	34.70'	N 51°07'08" E	34.65'
C8	26°12'32"	190.00'	86.91'	N 76°48'53" E	86.16'
C9	4°07'09"	480.40'	34.54'	N 54°17'29" E	34.53'
C10	26°52'02"	480.40'	225.27'	N 38°47'53" E	223.21'
C11	27°27'00"	150.00'	71.86'	N 42°37'33" E	71.18'
C12	25°26'24"	480.40'	213.30'	N 76°57'38" E	211.56'
C13	0°14'19"	480.40'	2.00'	N 89°48'00" E	2.00'

**GDA GANUNG - BELTON ASSOCIATES, INC.**  
professional surveyors and mappers  
1275 E. Robinson Street, Orlando, FL 32801 (407) 894-6656  
R. Clayton Ganung P.S.M. 4236 LB 7194