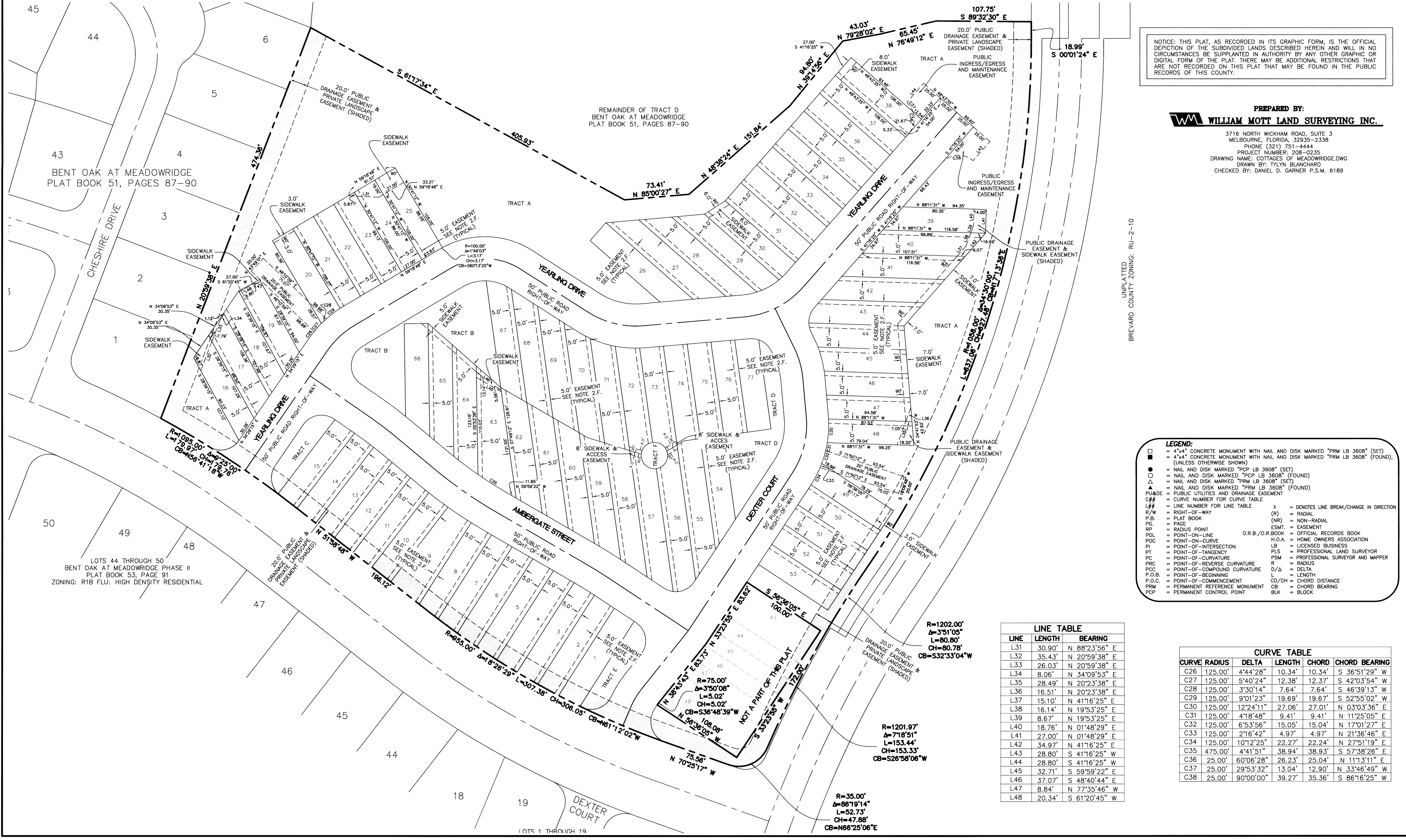
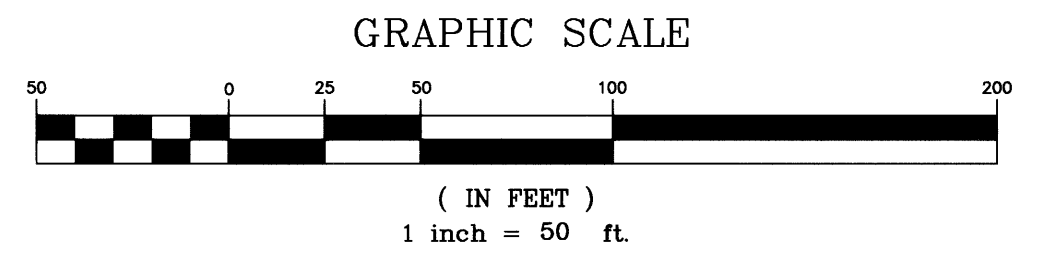
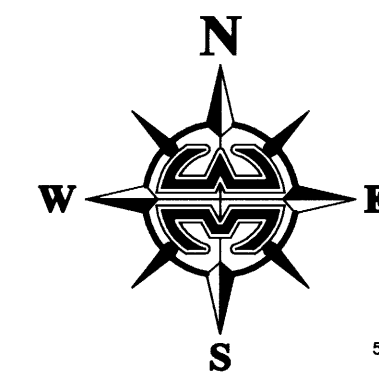


NOTE:
PRIOR TO THE RELEASE OF THE PERFORMANCE BOND,
ALL LOT CORNER MONUMENTATION WILL BE SET AS
1/2" IRON RODS WITH CAPS MARKED "LB 3608".

COTTAGES OF MEADOWRIDGE

A Replat of Lots 1 through 42, Lots 49 through 92 and Tracts A, B, C, D, E, F, G and H,
of The Reserve at Meadowridge, according to the Plat thereof, as recorded in
Plat Book 57, Pages 36-38, of the Public Records of Brevard County, Florida;
lying in Section 34, Township 22 South, Range 35 East, City of Titusville, Brevard County, Florida



NOTICE: THIS PLAT, AS RECORDED IN ITS GRAPHIC FORM, IS THE OFFICIAL DEPICTION OF THE SUBDIVIDED LANDS DESCRIBED HEREIN AND WILL IN NO CIRCUMSTANCES BE SUPPLANTED IN AUTHORITY BY ANY OTHER GRAPHIC OR DIGITAL FORM OF THE PLAT. THERE MAY BE ADDITIONAL RESTRICTIONS THAT ARE NOT RECORDED ON THIS PLAT THAT MAY BE FOUND IN THE PUBLIC RECORDS OF THIS COUNTY.

PREPARED BY:
WILLIAM MOTT LAND SURVEYING INC.
3716 NORTH WICKHAM ROAD, SUITE 3
MELBOURNE, FLORIDA, 32935-2338
PHONE (321) 751-4444
PROJECT NUMBER: 208-0235
DRAWING NAME: COTTAGES OF MEADOWRIDGE.DWG
DRAWN BY: TYLYN BLANCHARD
CHECKED BY: DANIEL D. GARNER P.S.M. 6189

UNPLATTED BREVARD COUNTY ZONING: RU-2-10

LEGEND:

- = 4"x4" CONCRETE MONUMENT WITH NAIL AND DISK MARKED "PRM LB 3608" (SET)
- = 4"x4" CONCRETE MONUMENT WITH NAIL AND DISK MARKED "PRM LB 3608" (FOUND)
- (UNLESS OTHERWISE SHOWN)
- = NAIL AND DISK MARKED "PCP LB 3608" (SET)
- = NAIL AND DISK MARKED "PCP LB 3608" (FOUND)
- △ = NAIL AND DISK MARKED "PRM LB 3608" (SET)
- ▲ = NAIL AND DISK MARKED "PRM LB 3608" (FOUND)
- PUB&E = PUBLIC UTILITIES AND DRAINAGE EASEMENT
- C# = CURVE NUMBER FOR CURVE TABLE
- L# = LINE NUMBER FOR LINE TABLE
- R/W = RIGHT-OF-WAY
- P.B. = PLAT BOOK
- PG = PAGE
- RP = RADIUS POINT
- POL = POINT-ON-LINE
- POC = POINT-ON-CURVE
- PI = POINT-OF-INTERSECTION
- PT = POINT-OF-TANGENCY
- PC = POINT-OF-CURVATURE
- PRC = POINT-OF-REVERSE CURVATURE
- PCC = POINT-OF-COMPOUND CURVATURE
- P.O.B. = POINT-OF-BEGINNING
- P.O.C. = POINT-OF-COMMENCEMENT
- PRM = PERMANENT REFERENCE MONUMENT
- PCP = PERMANENT CONTROL POINT
- X = DENOTES LINE BREAK/CHANGE IN DIRECTION
- (R) = RADIAL
- (NR) = NON-RADIAL
- ESMT. = EASEMENT
- O.R.B./O.R. BOOK = OFFICIAL RECORDS BOOK
- H.O.A. = HOME OWNERS ASSOCIATION
- LB = LICENSED BUSINESS
- PLS = PROFESSIONAL LAND SURVEYOR
- PSM = PROFESSIONAL SURVEYOR AND MAPPER
- R = RADIUS
- D/Δ = DELTA
- L = LENGTH
- CD/CH = CHORD DISTANCE
- CB = CHORD BEARING
- BLK = BLOCK

LINE TABLE

LINE	LENGTH	BEARING
L31	30.90'	N 88°23'56" E
L32	35.43'	N 20°59'38" E
L33	26.03'	N 20°59'38" E
L34	8.06'	N 34°09'53" E
L35	28.49'	N 20°23'38" E
L36	16.51'	N 20°23'38" E
L37	15.10'	N 41°16'25" E
L38	16.14'	N 19°53'25" E
L39	8.67'	N 19°53'25" E
L40	18.76'	N 01°48'29" E
L41	27.00'	N 01°48'29" E
L42	34.97'	N 41°16'25" E
L43	28.80'	S 41°16'25" W
L44	28.80'	S 41°16'25" W
L45	32.71'	S 59°59'22" E
L46	37.07'	S 48°40'44" E
L47	8.84'	N 77°35'46" W
L48	20.34'	S 61°20'45" W

CURVE TABLE

CURVE	RADIUS	DELTA	LENGTH	CHORD	CHORD BEARING
C26	125.00'	4°44'28"	10.34'	10.34'	S 36°51'29" W
C27	125.00'	5°40'24"	12.38'	12.37'	S 42°03'54" W
C28	125.00'	3°30'14"	7.64'	7.64'	S 46°39'13" W
C29	125.00'	9°01'23"	19.69'	19.67'	S 52°55'02" W
C30	125.00'	12°24'11"	27.06'	27.01'	N 03°03'36" E
C31	125.00'	4°18'48"	9.41'	9.41'	N 11°25'05" E
C32	125.00'	6°53'56"	15.05'	15.04'	N 17°01'27" E
C33	125.00'	2°16'42"	4.97'	4.97'	N 21°36'46" E
C34	125.00'	10°12'25"	22.27'	22.24'	N 27°51'19" E
C35	475.00'	4°41'51"	38.94'	38.93'	S 57°38'26" E
C36	25.00'	60°06'28"	26.23'	25.04'	N 11°13'11" E
C37	25.00'	29°53'32"	13.04'	12.90'	N 33°46'49" W
C38	25.00'	90°00'00"	39.27'	35.36'	S 86°16'25" W

LOTS 44 THROUGH 50
BENT OAK AT MEADOWRIDGE PHASE II
PLAT BOOK 53, PAGE 91
ZONING: R1B FLU: HIGH DENSITY RESIDENTIAL

REMAINDER OF TRACT D
BENT OAK AT MEADOWRIDGE
PLAT BOOK 51, PAGES 87-90

BENT OAK AT MEADOWRIDGE
PLAT BOOK 51, PAGES 87-90

NOT A PART OF THIS PLAT

R=1202.00'
Δ=3°51'05"
L=80.80'
CH=80.78'
CB=S32°33'04"W

R=1201.97'
Δ=7°18'51"
L=153.44'
CH=153.33'
CB=S26°58'06"W

R=35.00'
Δ=86°19'14"
L=52.73'
CH=47.88'
CB=N66°25'06"E

LOTS 1 THROUGH 19