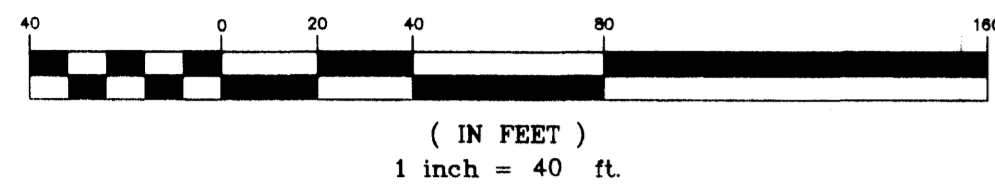


# SAN MARINO ESTATES

A SUBDIVISION LYING IN SECTION 1, TOWNSHIP 26 SOUTH, RANGE 36 EAST  
 BREVARD COUNTY, FLORIDA

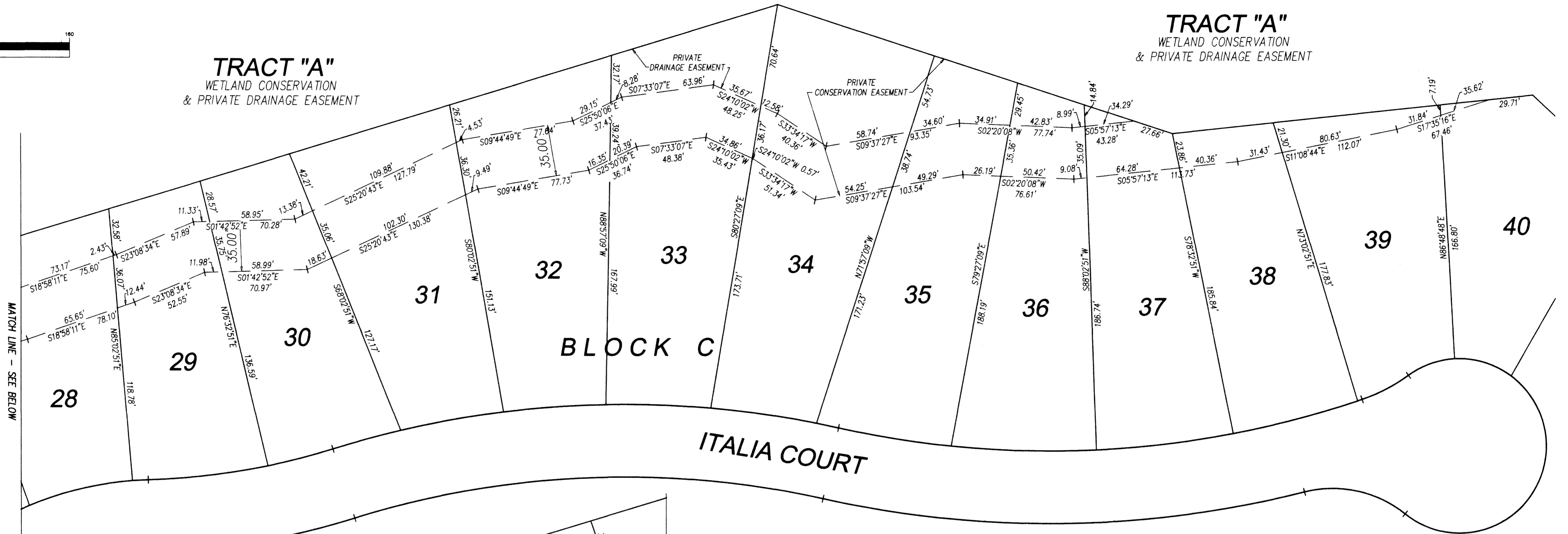


GRAPHIC SCALE



**TRACT "A"**  
 WETLAND CONSERVATION  
 & PRIVATE DRAINAGE EASEMENT

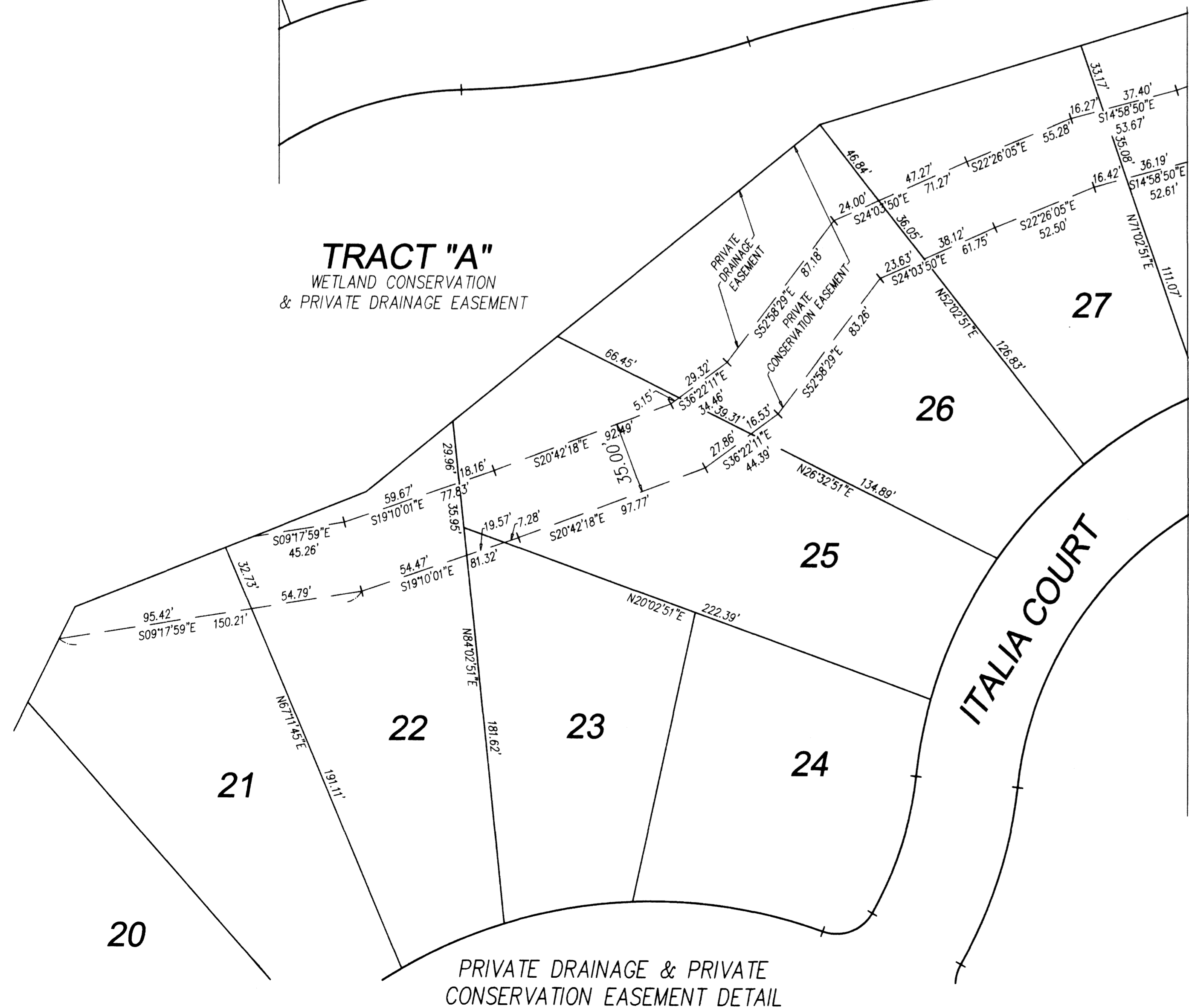
**TRACT "A"**  
 WETLAND CONSERVATION  
 & PRIVATE DRAINAGE EASEMENT



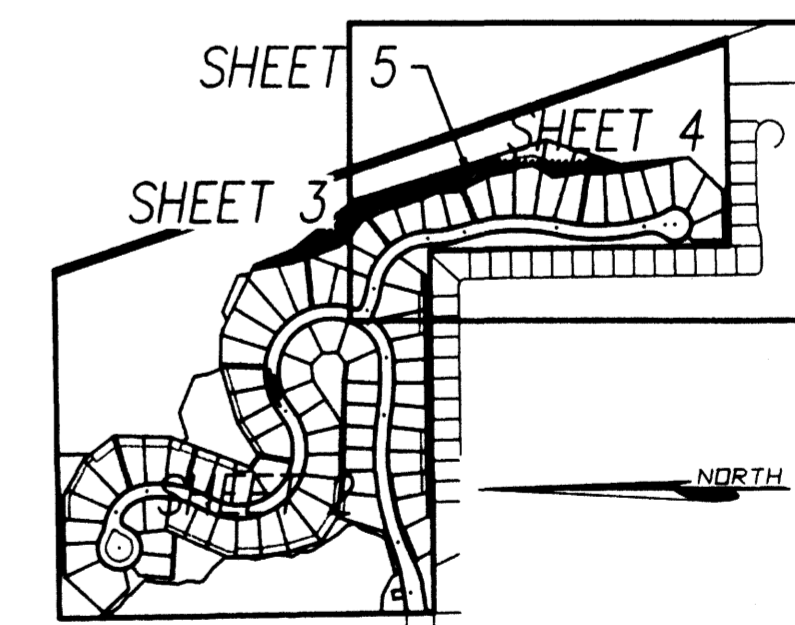
ITALIA COURT

PRIVATE DRAINAGE & PRIVATE  
 CONSERVATION EASEMENT DETAIL

**TRACT "A"**  
 WETLAND CONSERVATION  
 & PRIVATE DRAINAGE EASEMENT



PRIVATE DRAINAGE & PRIVATE  
 CONSERVATION EASEMENT DETAIL



SHEET INDEX  
 NOT TO SCALE

PREPARED BY  
**GORDON & ASSOCIATES**  
**SURVEYORS & MAPPERS, INC.**

219 FORREST AVENUE  
 COCOA, FLORIDA 32922  
 (321)639-8171

"NOTICE: This plat, as recorded in its graphic form, is the official depiction of the subdivided lands described herein and will in no circumstances be supplanted in authority by any other graphic or digital form of the plat. There may be additional restrictions that are not recorded on this plat that may be found in the public records of this county."