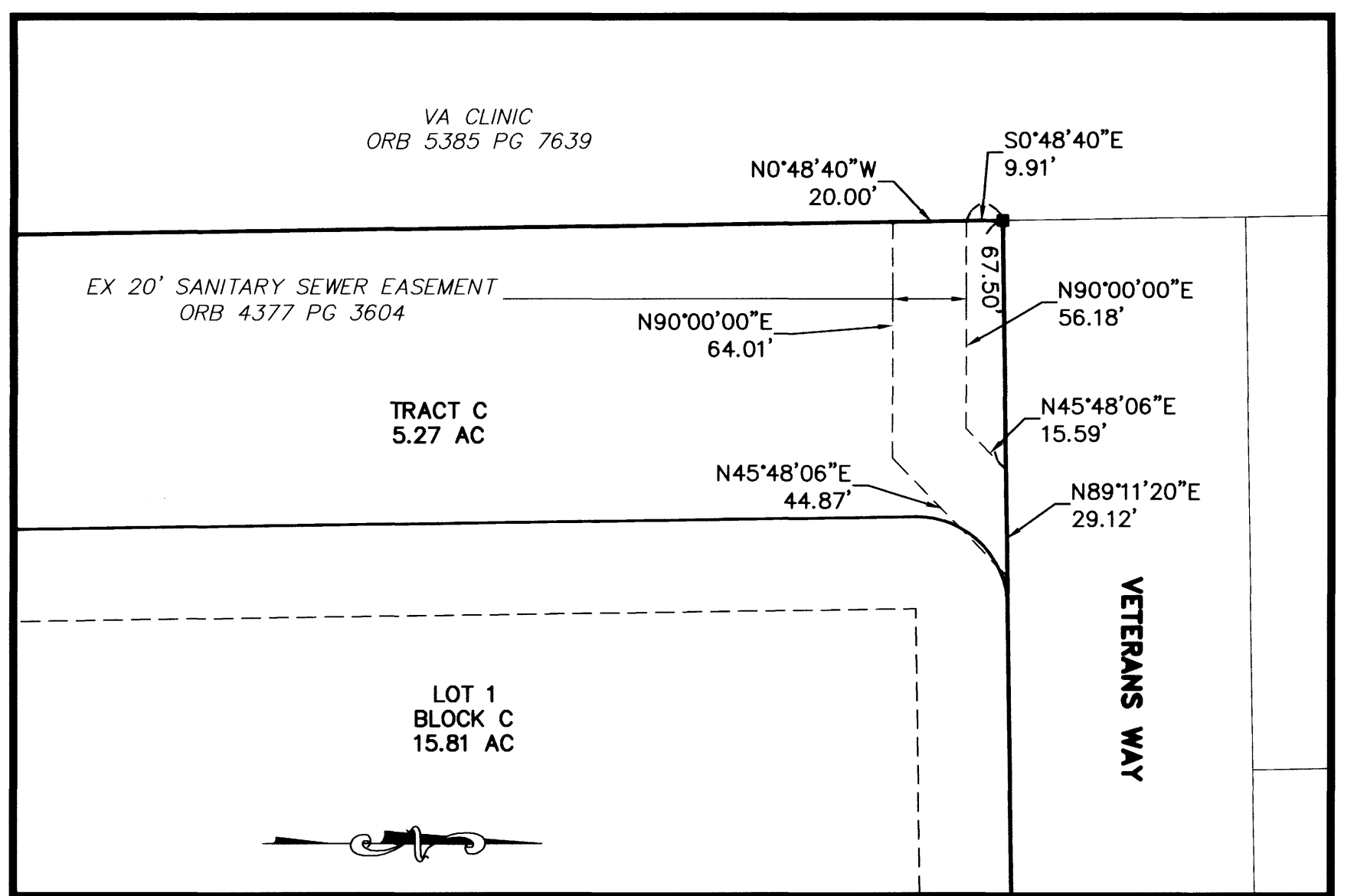
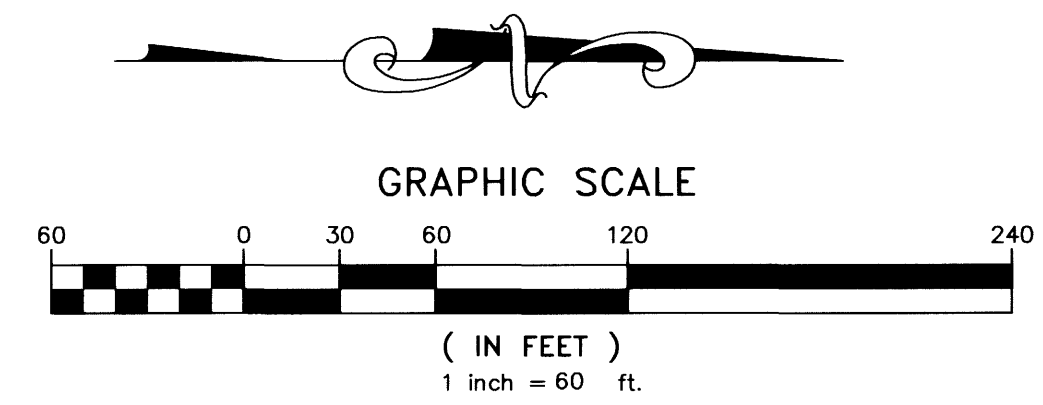
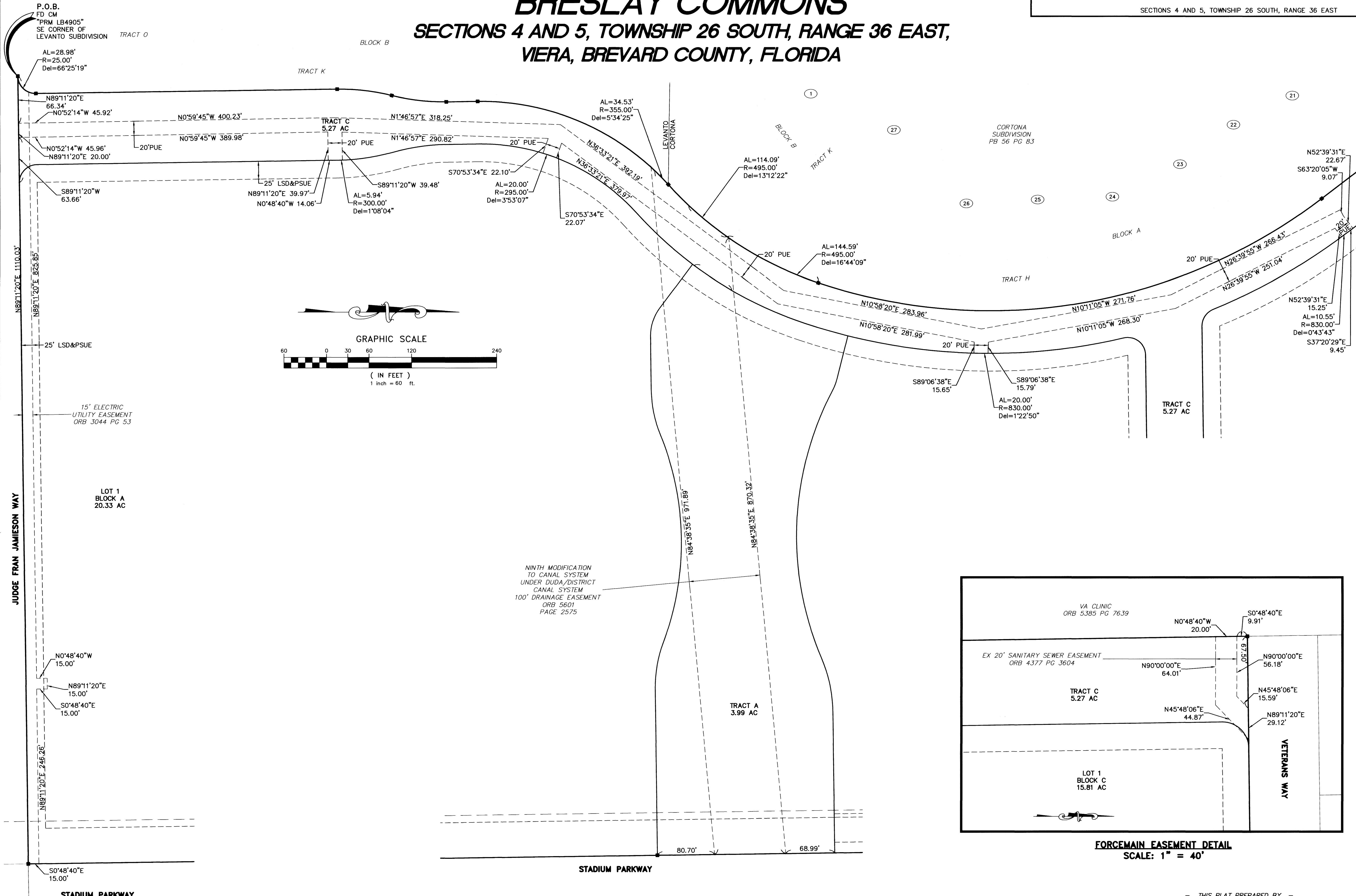


# BRESLAY COMMONS

## SECTIONS 4 AND 5, TOWNSHIP 26 SOUTH, RANGE 36 EAST, VIERA, BREVARD COUNTY, FLORIDA



NOTICE: THIS PLAT, AS RECORDED IN ITS GRAPHIC FORM, IS THE OFFICIAL DEPICTION OF THE SUBDIVIDED LANDS DESCRIBED HEREIN AND WILL IN NO CIRCUMSTANCES BE SUPPLANTED IN AUTHORITY BY ANY OTHER GRAPHIC OR DIGITAL FORM OF THE PLAT. THERE MAY BE ADDITIONAL RESTRICTIONS THAT ARE NOT RECORDED ON THIS PLAT THAT MAY BE FOUND IN THE PUBLIC RECORDS OF THIS COUNTY.

REVISION 2: AGENCY COMMENTS 7/14/08  
 REVISION 1: AGENCY AND CLIENT COMMENTS 6/12/08

THIS PLAT PREPARED BY -

**B.S.E. CONSULTANTS, INC.**  
 CONSULTING - ENGINEERING - LAND SURVEYING  
 312 SOUTH HARBOR CITY BOULEVARD, SUITE 4 MELBOURNE, FL 32901  
 PHONE: (321) 725-3614 FAX: (321) 725-1159  
 CERTIFICATE OF BUSINESS AUTHORIZATION: 4825  
 CERTIFICATE OF LAND SURVEYING BUSINESS AUTHORIZATION: LB0004925

DATE: 3/11/08  
 DRAWN: WJV  
 CHECKED: LEH  
 DRAWING: 11019\_300\_003  
 PROJECT#: 11019

2008 B.S.E. CONSULTANTS, INC. H:\Projects\Breslay\11019\Drawings\11019\_300\_003.dwg July 23, 2008 8:41:56 AM