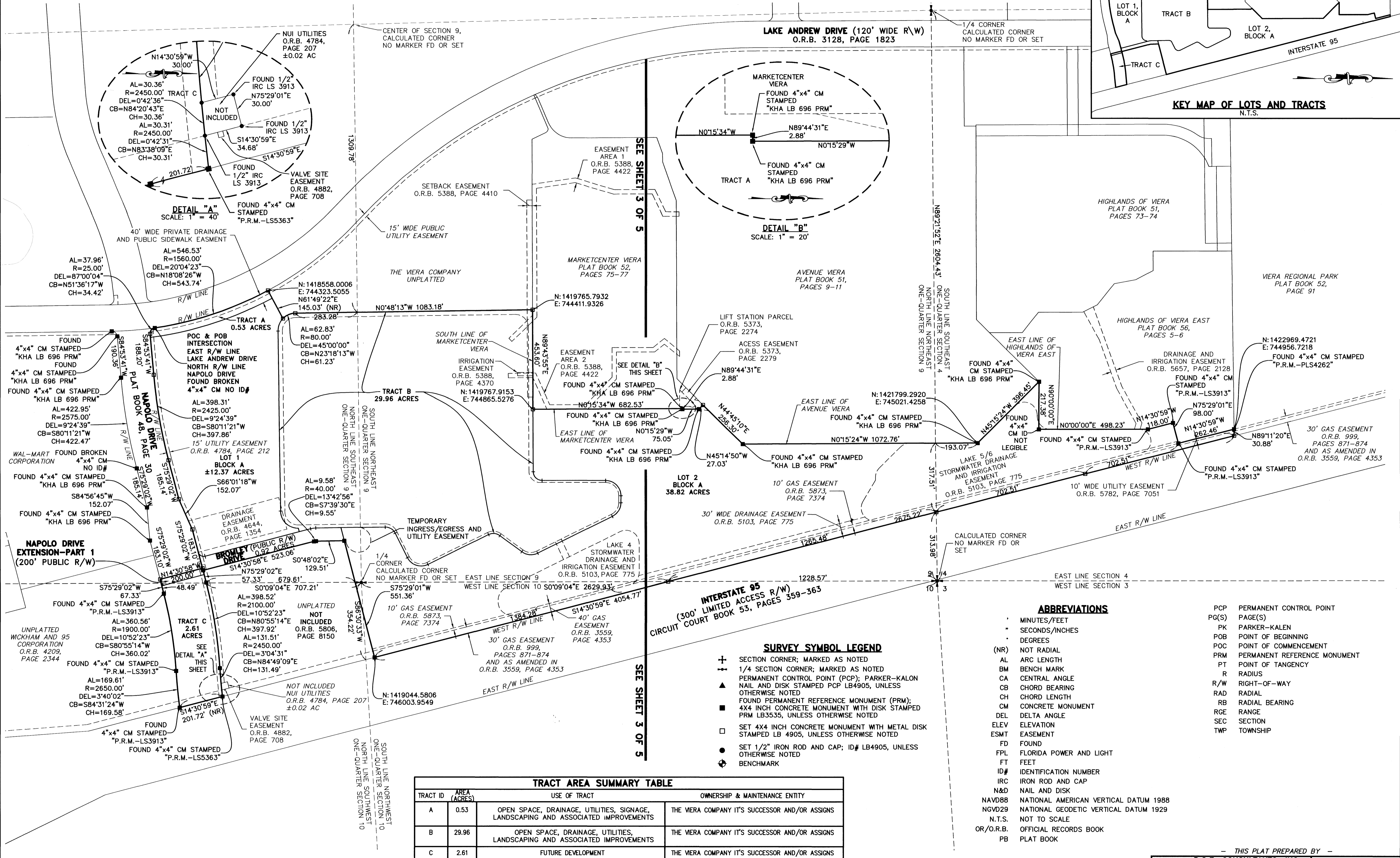
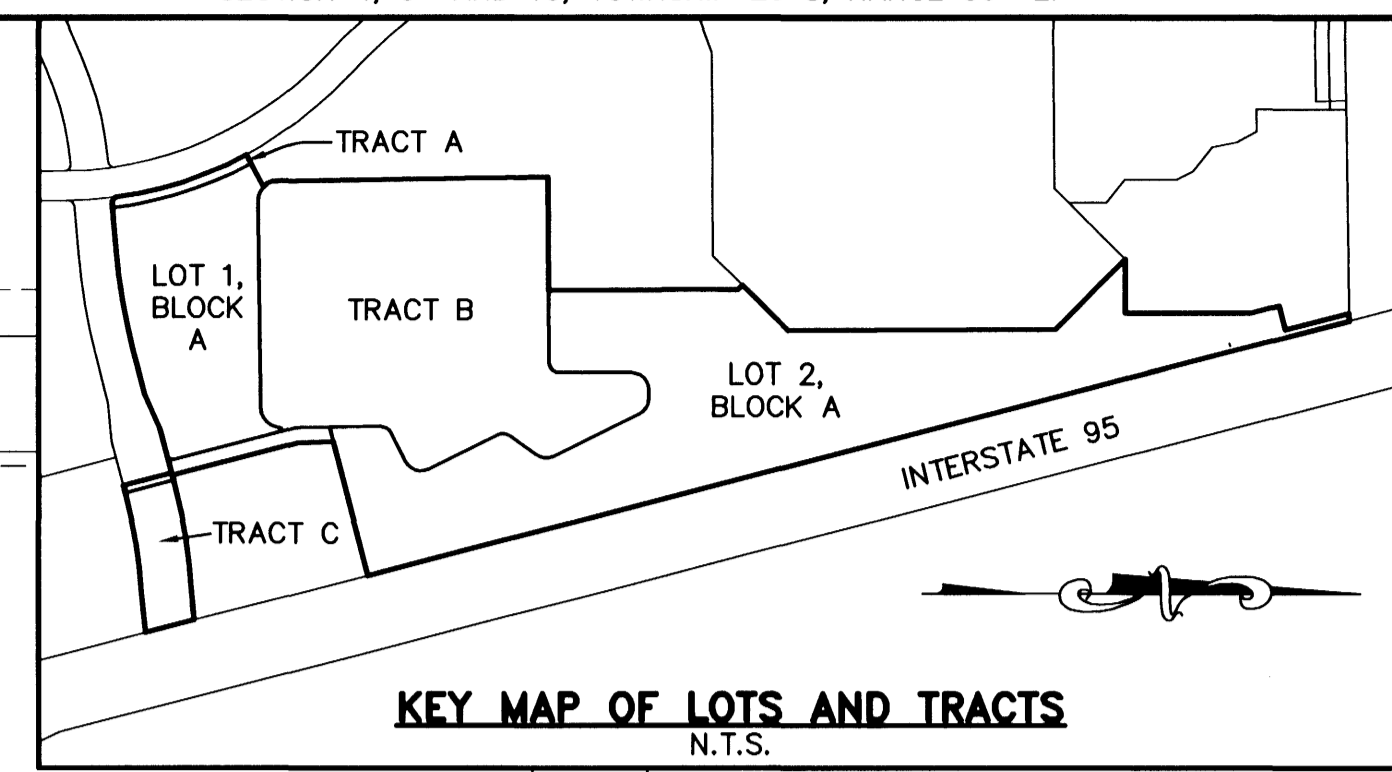
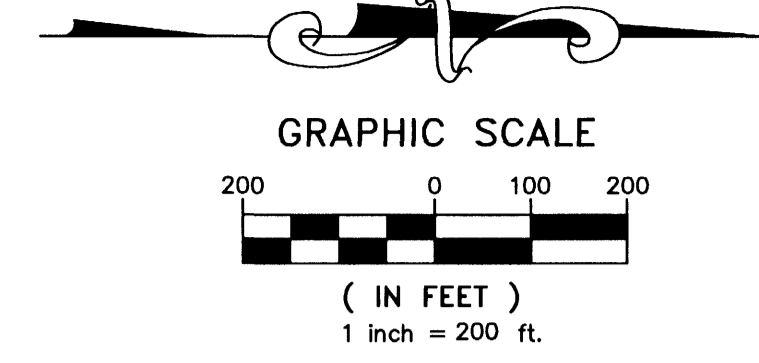


# BROMLEY DRIVE CENTER

## SECTIONS 4, 9 AND 10, TOWNSHIP 26 SOUTH, RANGE 36 EAST

### VIERA, BREVARD COUNTY, FLORIDA



SEE SHEET 3 OF 5

SEE SHEET 3 OF 5

- SURVEY SYMBOL LEGEND**
- ⊕ SECTION CORNER; MARKED AS NOTED
  - ⊙ 1/4 SECTION CORNER; MARKED AS NOTED
  - PERMANENT CONTROL POINT (PCP); PARKER-KALON OTHERWISE NOTED
  - ▲ FOUND PERMANENT REFERENCE MONUMENT (PRM); 4X4 INCH CONCRETE MONUMENT WITH DISK STAMPED PRM LB3535, UNLESS OTHERWISE NOTED
  - SET 4X4 INCH CONCRETE MONUMENT WITH METAL DISK STAMPED LB 4905, UNLESS OTHERWISE NOTED
  - SET 1/2" IRON ROD AND CAP; ID# LB4905, UNLESS OTHERWISE NOTED
  - ⊕ BENCHMARK

- ABBREVIATIONS**
- MINUTES/FEET
  - SECONDS/INCHES
  - DEGREES
  - (NR) NOT RADIAL
  - AL ARC LENGTH
  - BM BENCH MARK
  - CA CENTRAL ANGLE
  - CB CHORD BEARING
  - CH CHORD LENGTH
  - CM CONCRETE MONUMENT
  - DEL DELTA ANGLE
  - ELEV ELEVATION
  - ESMT EASEMENT
  - FD FOUND
  - FPL FLORIDA POWER AND LIGHT
  - FT FEET
  - ID# IDENTIFICATION NUMBER
  - IRC IRON ROD AND CAP
  - N&D NAIL AND DISK
  - NAVD88 NATIONAL AMERICAN VERTICAL DATUM 1988
  - NGVD29 NATIONAL GEODETIC VERTICAL DATUM 1929
  - N.T.S. NOT TO SCALE
  - OR/O.R.B. OFFICIAL RECORDS BOOK
  - PB PLAT BOOK
  - PCP PERMANENT CONTROL POINT
  - PG(S) PAGE(S)
  - PK PARKER-KALON
  - POB POINT OF BEGINNING
  - POC POINT OF COMMENCEMENT
  - PRM PERMANENT REFERENCE MONUMENT
  - PT POINT OF TANGENCY
  - R RADIUS
  - R/W RIGHT-OF-WAY
  - RAD RADIAL
  - RB RADIAL BEARING
  - RGE RANGE
  - SEC SECTION
  - TWP TOWNSHIP

| TRACT AREA SUMMARY TABLE |              |   |   |
|--------------------------|--------------|---|---|
| TRACT ID                 | AREA (ACRES) | USE OF TRACT  | OWNERSHIP & MAINTENANCE ENTITY                  |
| A                        | 0.53         | OPEN SPACE, DRAINAGE, UTILITIES, SIGNAGE, LANDSCAPING AND ASSOCIATED IMPROVEMENTS | THE VIERA COMPANY IT'S SUCCESSOR AND/OR ASSIGNS |
| B                        | 29.96        | OPEN SPACE, DRAINAGE, UTILITIES, LANDSCAPING AND ASSOCIATED IMPROVEMENTS          | THE VIERA COMPANY IT'S SUCCESSOR AND/OR ASSIGNS |
| C                        | 2.61         | FUTURE DEVELOPMENT  | THE VIERA COMPANY IT'S SUCCESSOR AND/OR ASSIGNS |

NOTICE: THIS PLAT, AS RECORDED IN ITS GRAPHIC FORM, IS THE OFFICIAL DEPICTION OF THE SUBDIVIDED LANDS DESCRIBED HEREIN AND WILL IN NO CIRCUMSTANCES BE SUPPLANTED IN AUTHORITY BY ANY OTHER GRAPHIC OR DIGITAL FORM OF THE PLAT. THERE MAY BE ADDITIONAL RESTRICTIONS THAT ARE NOT RECORDED ON THIS PLAT THAT MAY BE FOUND IN THE PUBLIC RECORDS OF THIS COUNTY.

THIS PLAT PREPARED BY

**B.S.E. CONSULTANTS, INC.**  
ENGINEERING - LAND SURVEYING  
312 SOUTH HARBOUR CITY BOULEVARD, SUITE 4 MELBOURNE, FL 32901  
PHONE: (321) 725-3014 FAX: (321) 725-1155  
CERTIFICATE OF BUSINESS AUTHORIZATION: 4902  
CERTIFICATE OF LAND SURVEYING BUSINESS AUTHORIZATION: LB0004902

DATE: 5/12/08  
DRAWN: RBS  
CHECKED:  
DRAWING#: 10686\_300\_002  
PROJECT# 10686