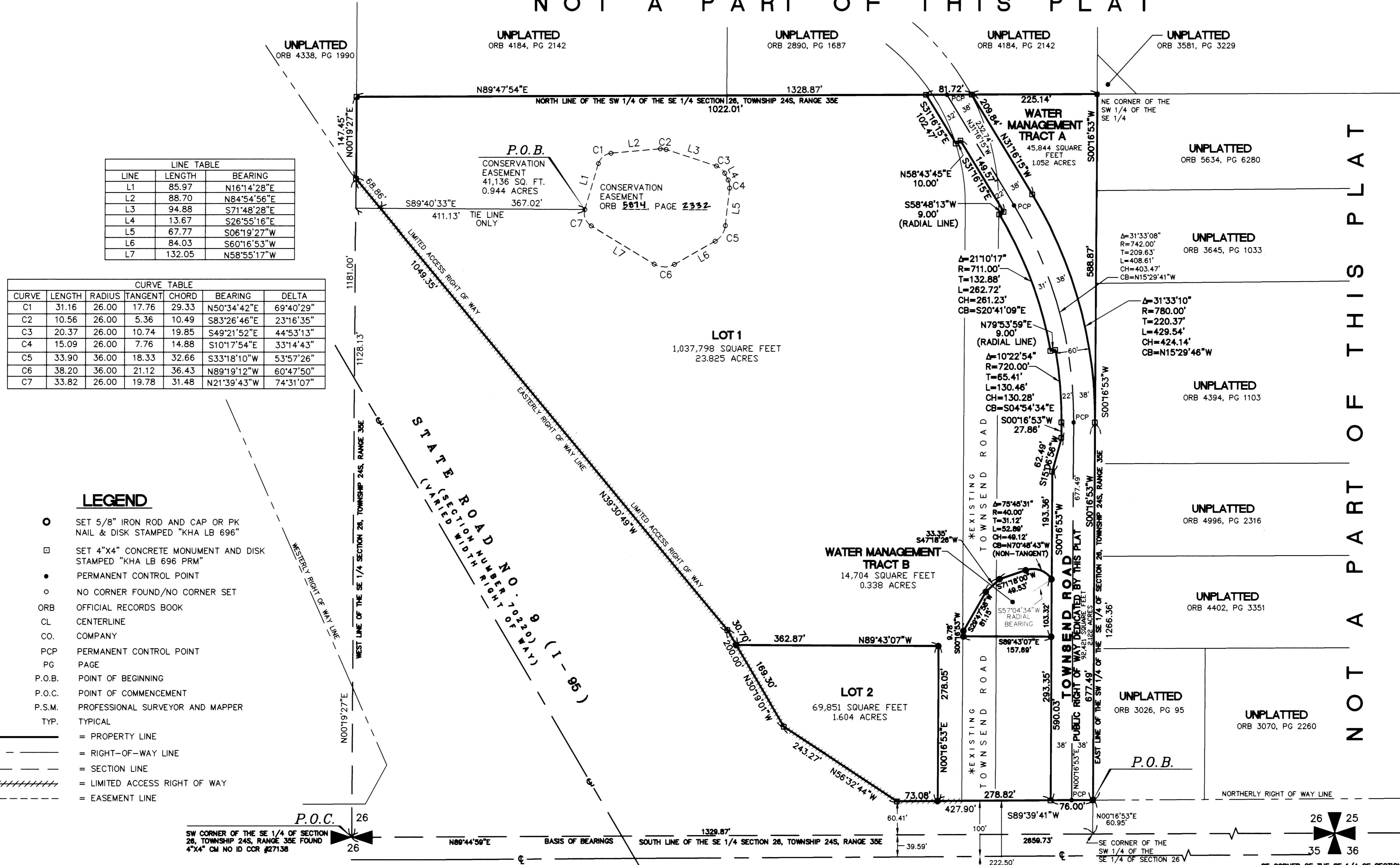


# SAM'S CLUB SUBDIVISION

A PARCEL OF LAND LYING IN THE SOUTHWEST 1/4 OF THE SOUTHEAST 1/4 SECTION 26, TOWNSHIP 24 SOUTH, RANGE 35 EAST, CITY OF COCOA, BREVARD COUNTY, FLORIDA.

NOT A PART OF THIS PLAT



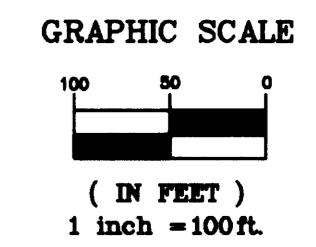
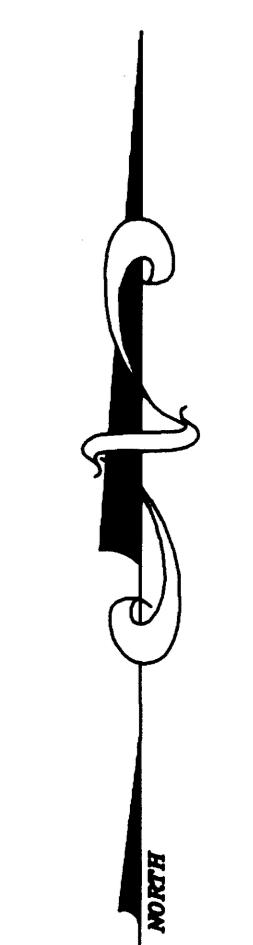
LINE	LENGTH	BEARING
L1	85.97	N16°14'28"E
L2	88.70	N84°54'56"E
L3	94.88	S71°48'28"E
L4	13.67	S26°55'16"E
L5	67.77	S06°19'27"W
L6	84.03	S60°16'53"W
L7	132.05	N58°55'17"W

CURVE	LENGTH	RADIUS	TANGENT	CHORD	BEARING	DELTA
C1	31.16	26.00	17.76	29.33	N50°34'42"E	69°40'29"
C2	10.56	26.00	5.36	10.49	S83°26'46"E	23°16'35"
C3	20.37	26.00	10.74	19.85	S49°21'52"E	44°53'13"
C4	15.09	26.00	7.76	14.88	S10°17'54"E	33°14'43"
C5	33.90	36.00	18.33	32.66	S33°18'10"W	53°57'26"
C6	38.20	36.00	21.12	36.43	N89°19'12"W	60°47'50"
C7	33.82	26.00	19.78	31.48	N21°39'43"W	74°31'07"

### LEGEND

- SET 5/8" IRON ROD AND CAP OR PK NAIL & DISK STAMPED "KHA LB 696"
- SET 4"x4" CONCRETE MONUMENT AND DISK STAMPED "KHA LB 696 PRM"
- PERMANENT CONTROL POINT
- NO CORNER FOUND/NO CORNER SET
- ORB OFFICIAL RECORDS BOOK
- CL CENTERLINE
- CO. COMPANY
- PCP PERMANENT CONTROL POINT
- PG PAGE
- P.O.B. POINT OF BEGINNING
- P.O.C. POINT OF COMMENCEMENT
- P.S.M. PROFESSIONAL SURVEYOR AND MAPPER
- TYP. TYPICAL
- = PROPERTY LINE
- - - = RIGHT-OF-WAY LINE
- - - - - = SECTION LINE
- ////// = LIMITED ACCESS RIGHT OF WAY
- - - - - = EASEMENT LINE

LOT	ACREAGE
LOT 1	21.703 AC
LOT 2	1.604 AC
TRACT A	1.052 AC
TRACT B	0.337 AC
TOWNSEND ROAD	2.122 AC
TOTAL	26.818 AC



NOT A PART OF THIS PLAT

**Kimley-Horn and Associates, Inc**  
 E.C. DEMETER, P.S.M. NO. 5179  
 601 21st Street, Suite 300, Vero Beach, FL 32960  
 Phone (772)562-7981 Fax (772)562-9689  
 PREPARED SEPTEMBER 26, 2007

\* EXISTING TOWNSEND ROAD RIGHT OF WAY, AS SHOWN WITHIN LOT 1 AND WATER MANAGEMENT TRACT B WILL BE VACATED BY A CITY OF COCOA RESOLUTION UPON ACCEPTANCE OF THE RELOCATED TOWNSEND ROAD PUBLIC RIGHT OF WAY DEDICATED BY THIS PLAT