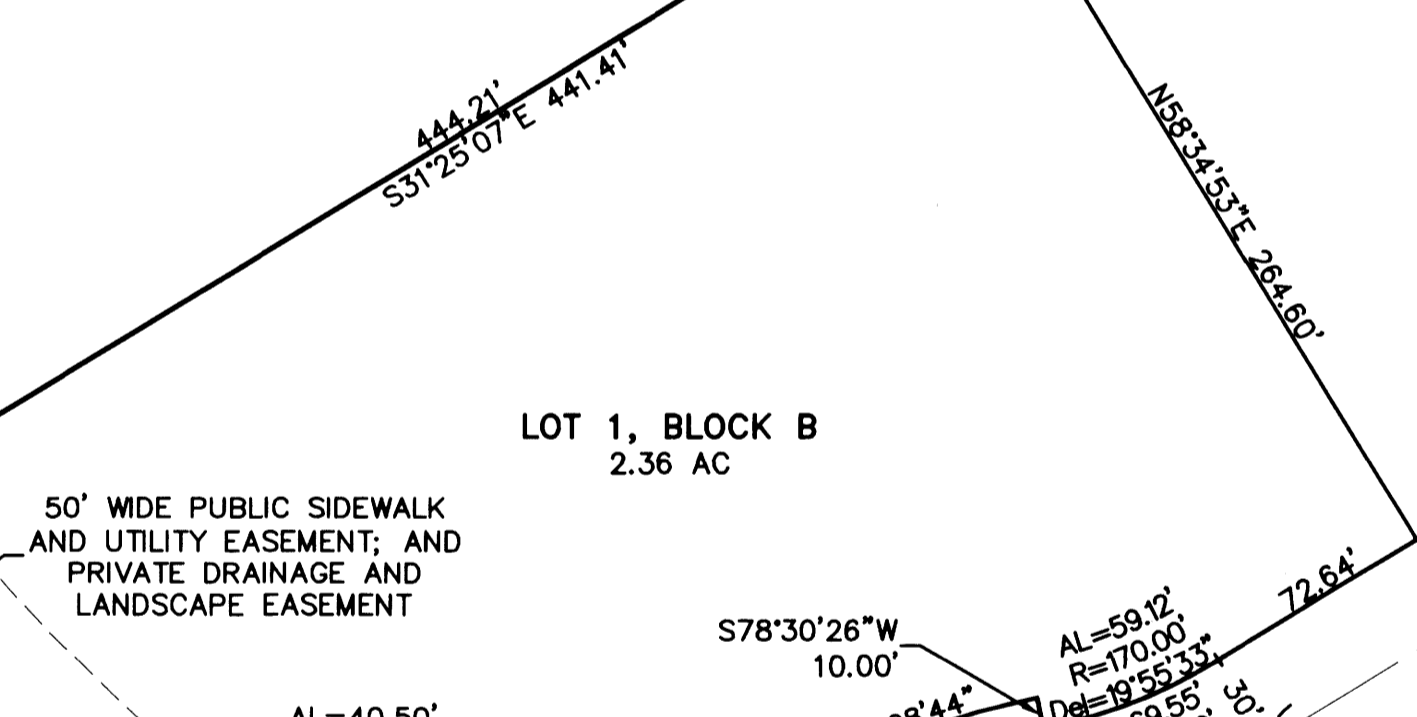
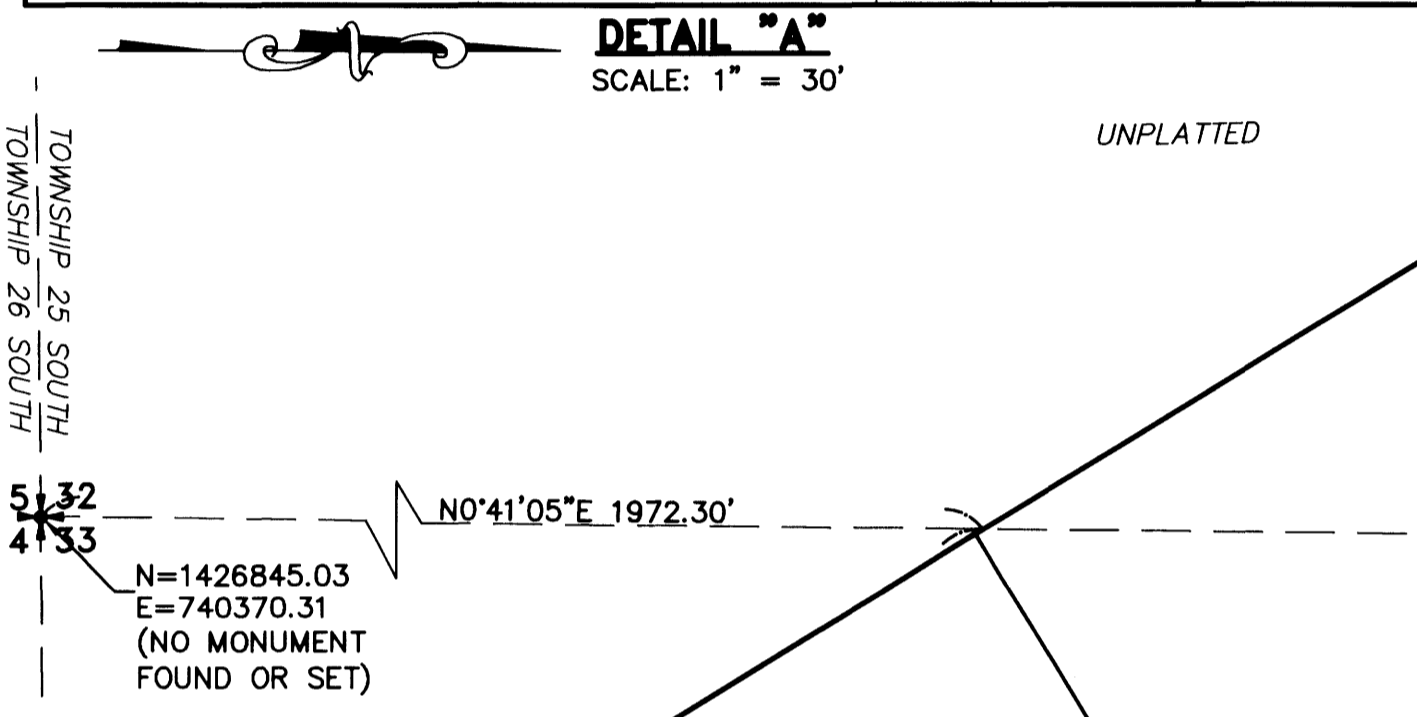
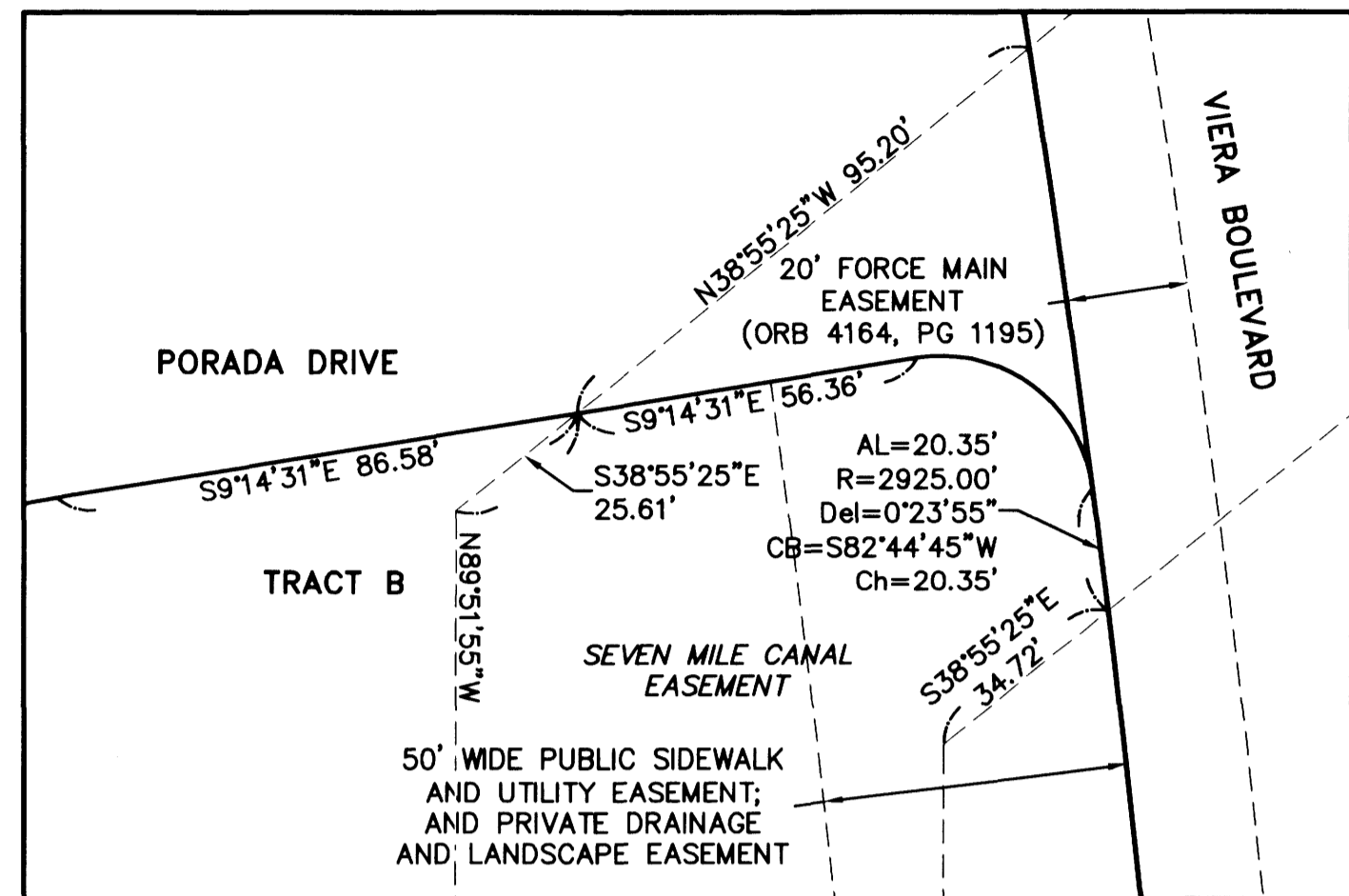
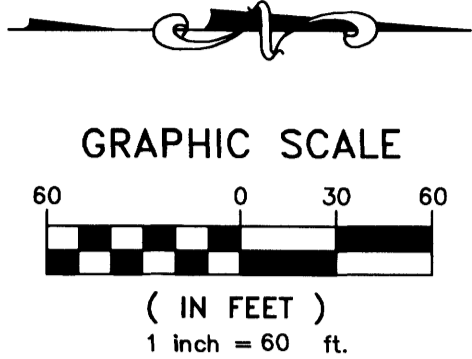
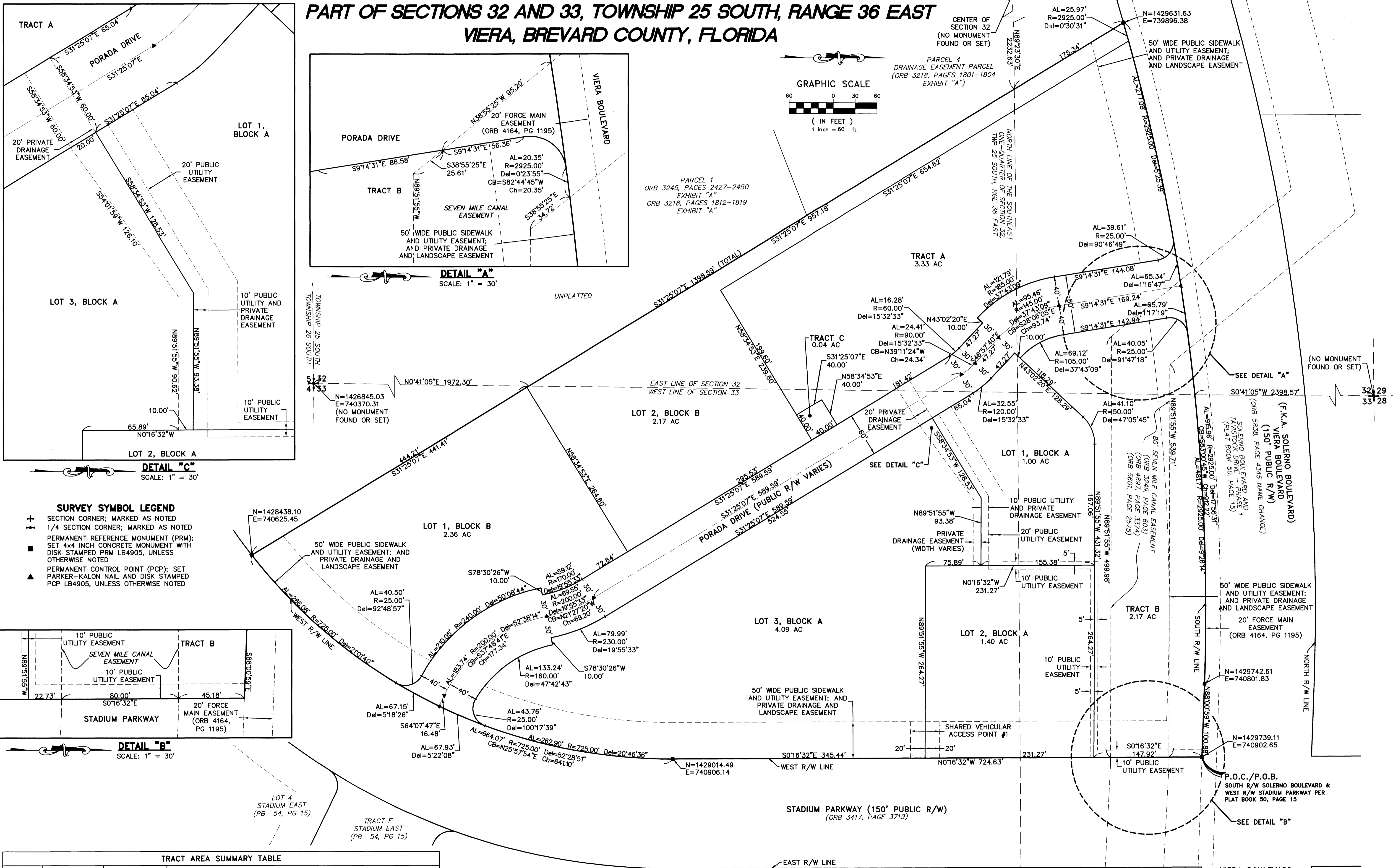
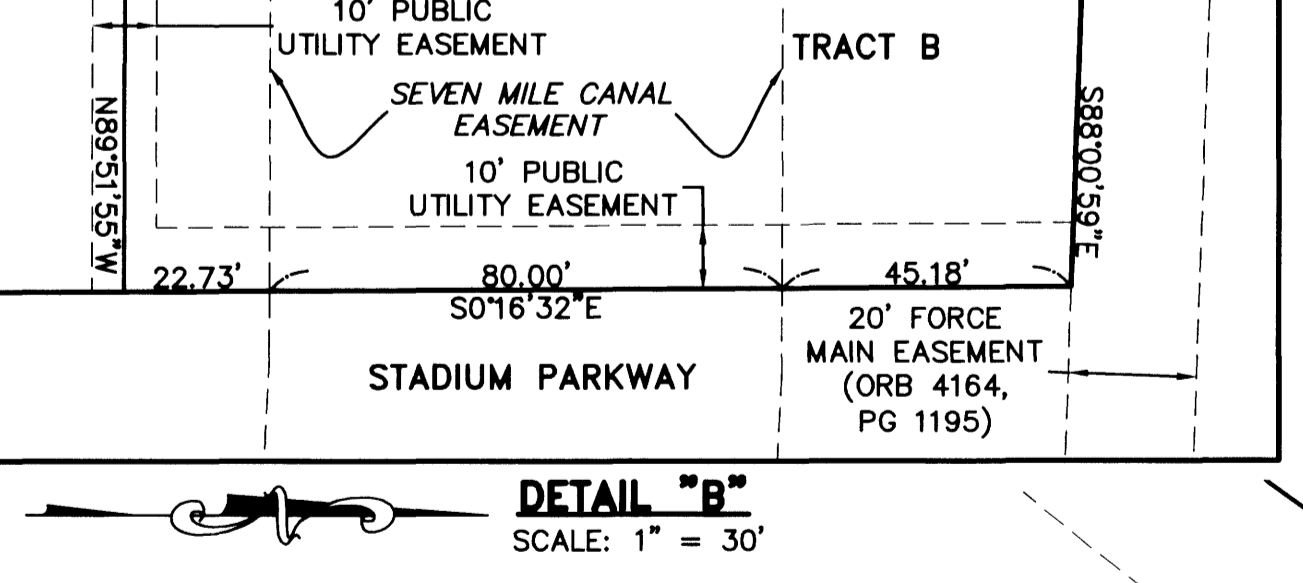


# SOUTH SOLERNO COMMERCIAL CENTER

## PART OF SECTIONS 32 AND 33, TOWNSHIP 25 SOUTH, RANGE 36 EAST VIERA, BREVARD COUNTY, FLORIDA



- SURVEY SYMBOL LEGEND**
- ⊕ SECTION CORNER; MARKED AS NOTED
  - ⊙ 1/4 SECTION CORNER; MARKED AS NOTED
  - PERMANENT REFERENCE MONUMENT (PRM); SET 4x4 INCH CONCRETE MONUMENT WITH DISK STAMPED PRM LB4905, UNLESS OTHERWISE NOTED
  - ▲ PERMANENT CONTROL POINT (PCP); SET PARKER-KALON NAIL AND DISK STAMPED PCP LB4905, UNLESS OTHERWISE NOTED



TRACT AREA SUMMARY TABLE			
TRACT ID	AREA (ACRES)	USE OF TRACT	OWNERSHIP AND MAINTENANCE ENTITY
A	3.71	STORM WATER	CENTRAL VIERA COMMUNITY ASSOCIATION, ITS SUCCESSORS AND/OR ASSIGNS
B	2.17	STORM WATER	CENTRAL VIERA COMMUNITY ASSOCIATION, ITS SUCCESSORS AND/OR ASSIGNS
C	0.04	LIFT STATION	BREVARD COUNTY

NOTICE: THIS PLAT, AS RECORDED IN ITS GRAPHIC FORM, IS THE OFFICIAL DEPICTION OF THE SUBDIVIDED LANDS DESCRIBED HEREIN AND WILL IN NO CIRCUMSTANCES BE SUPPLANTED IN AUTHORITY BY ANY OTHER GRAPHIC OR DIGITAL FORM OF THE PLAT. THERE MAY BE ADDITIONAL RESTRICTIONS THAT ARE NOT RECORDED ON THIS PLAT THAT MAY BE FOUND IN THE PUBLIC RECORDS OF THIS COUNTY.

THIS PLAT PREPARED BY -

**B.S.E. CONSULTANTS, INC.**  
CONSULTING - ENGINEERING - LAND SURVEYING  
312 SOUTH HARBOR CITY BOULEVARD, SUITE 4 MELBOURNE, FL 32901  
PHONE: (321) 275-2674 FAX: (321) 723-1156  
CERTIFICATE OF BUSINESS AUTHORIZATION: 4600  
CERTIFICATE OF LAND SURVEYING BUSINESS AUTHORIZATION: LB0004965

DATE: 10/15/07  
DRAWN: DRS  
CHECKED: LEH  
DRAWING: 10918\_300\_002  
PROJECT: 10918

VIERA BOULEVARD EXTENSION  
(PLAT BOOK 57, PAGE 40)

P.O.C./P.O.B.  
SOUTH R/W SOLERNO BOULEVARD &  
WEST R/W STADIUM PARKWAY PER  
PLAT BOOK 50, PAGE 15

50' WIDE PUBLIC SIDEWALK  
AND UTILITY EASEMENT;  
AND PRIVATE DRAINAGE  
AND LANDSCAPE EASEMENT

(F.K.A. SOLERNO BOULEVARD)  
VIERA BOULEVARD  
(150' PUBLIC R/W)  
(ORB 5838, PAGE 4345 NAME CHANGE)  
SOLERNO BOULEVARD AND  
STADIUM PARKWAY - PHASE 1  
(PLAT BOOK 50, PAGE 15)

50' WIDE PUBLIC SIDEWALK  
AND UTILITY EASEMENT;  
AND PRIVATE DRAINAGE  
AND LANDSCAPE EASEMENT

50' WIDE PUBLIC SIDEWALK  
AND UTILITY EASEMENT;  
AND PRIVATE DRAINAGE  
AND LANDSCAPE EASEMENT