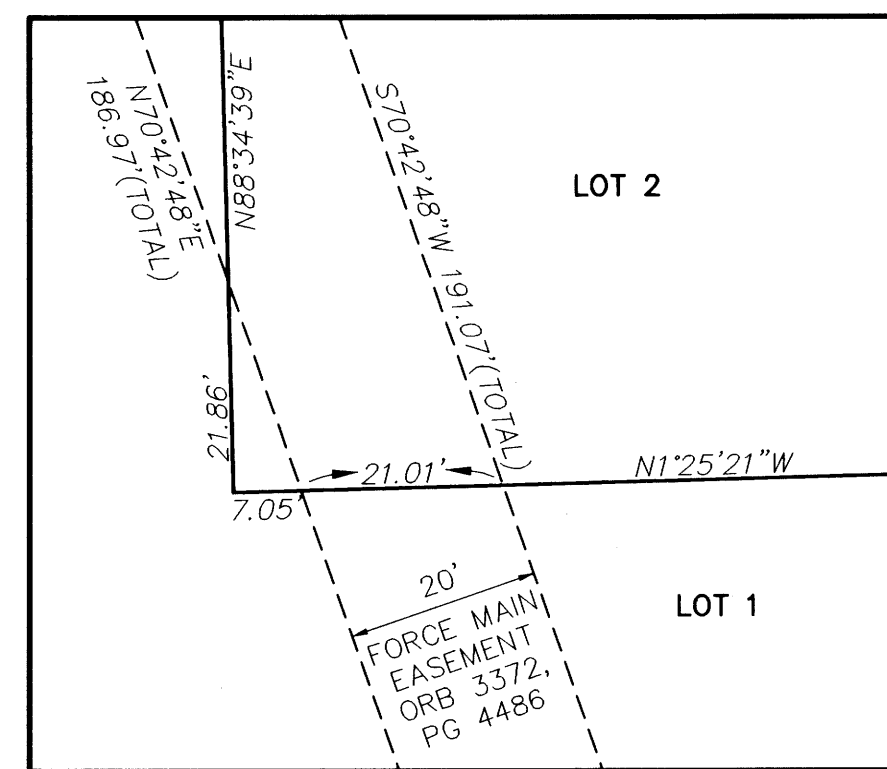
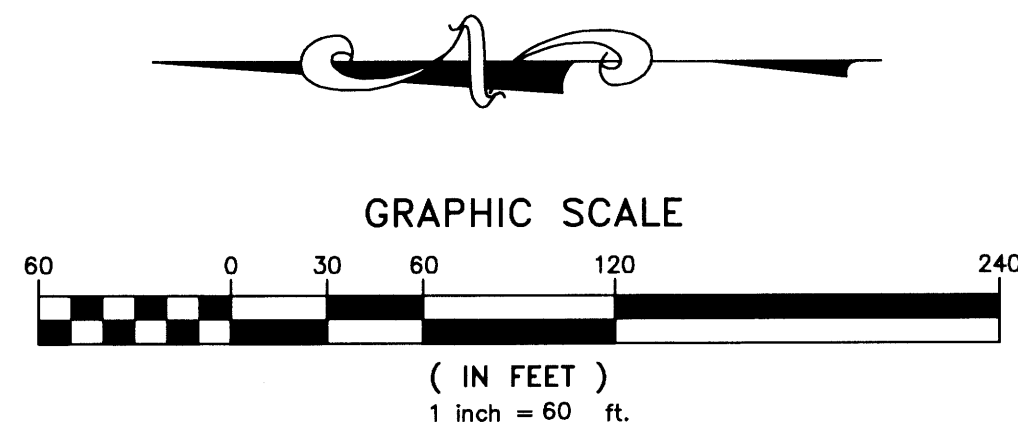


HOME DEPOT COCOA

SECTIONS 18, TOWNSHIP 24 SOUTH, RANGE 36 EAST

CITY OF COCOA, BREVARD COUNTY, FLORIDA

PLAT BOOK 52, PAGE 89
 SHEET 3 OF 7
 SECTIONS 18, TOWNSHIP 24 S, RANGE 36 E.



DETAIL "C"
 SCALE: 1" = 20'

STATE ROAD 528 (BEELINE EXPRESSWAY)
 (IMPROVED PUBLIC RIGHT OF WAY)
 (VARIABLE WIDTH)
 {STATE ROAD 524 RIGHT OF WAY MAP,
 SECTION 70007-2501
 REVISED 06/23/1980}
 CLEARLAKE ROAD EXIT RAMP
 SOUTHERLY R/W LINE OF STATE ROAD 528
 (BASIS OF BEARINGS)

FD CM ID# 2351
 11.2' NORTH AND 18.7'
 WEST OF END OF CHAIN
 LINK FENCE (HELD AS PRM)

WEST LINE OF THE EAST 1/2 OF THE
 NORTHWEST 1/4 OF SECTION 18,
 TOWNSHIP 24, SOUTH, RANGE 36 EAST.

A REPLAT OF COVENTRY OF COCOA
 PB 32, PAGE 76

NOTICE: THIS PLAT, AS RECORDED IN ITS GRAPHIC FORM, IS THE OFFICIAL DEPICTION OF THE SUBDIVIDED LANDS DESCRIBED HEREIN AND WILL IN NO CIRCUMSTANCES BE SUPPLANTED IN AUTHORITY BY ANY OTHER GRAPHIC OR DIGITAL FORM OF THE PLAT. THERE MAY BE ADDITIONAL RESTRICTIONS THAT ARE NOT RECORDED ON THIS PLAT THAT MAY BE FOUND IN THE PUBLIC RECORDS OF THIS COUNTY.

AL=20.57' R=169.69' DEL=6°56'43"
 CB=N25°00'19"W CH=20.56'
 N78°21'57"E 17.66'(NR)

AL=176.34' R=169.69'
 DEL=59°32'34"
 CB=S29°39'09"E
 CH=168.52'

STATE ROAD 528 AND 524
 (IMPROVED PUBLIC RIGHT OF WAY)
 (VARIABLE WIDTH)
 {STATE ROAD 524 RIGHT OF WAY MAP,
 SECTION 70007-2501
 REVISED 06/23/1980}
 CLEARLAKE ROAD EXIT RAMP

S00°07'09"W 132.98'
 S78°21'57"W 6.04'(NR) 16.66'
 S0°14'38"E 199.58'
 N0°14'38"W 196.46'

AL=261.96' R=169.69' DEL=88°27'30"
 CB=N44°20'54"E CH=256.17'

LOT 3
 1.69 AC

NOT A PART OF THIS PLAT
 McDONALD'S CORPORATION
 O.R.B. 3510, PG 3228

S01°25'21"E 215.00'

S30°34'34"W 50.00'

S59°25'26"E 351.72'

LOT 1
 15.74 AC

20' FORCE MAIN ESMT
 ORB 3372, PG 4486

N88°18'00"E 853.97'(TOTAL)
 S88°18'00"W 870.37'(TOTAL)

LOT 2
 1.13 AC

SR 524
 (IMPROVED PUBLIC RIGHT OF WAY)
 (VARIABLE WIDTH)
 {STATE ROAD 524 RIGHT OF WAY MAP,
 SECTION 70007-2501
 REVISED 06/23/1980}

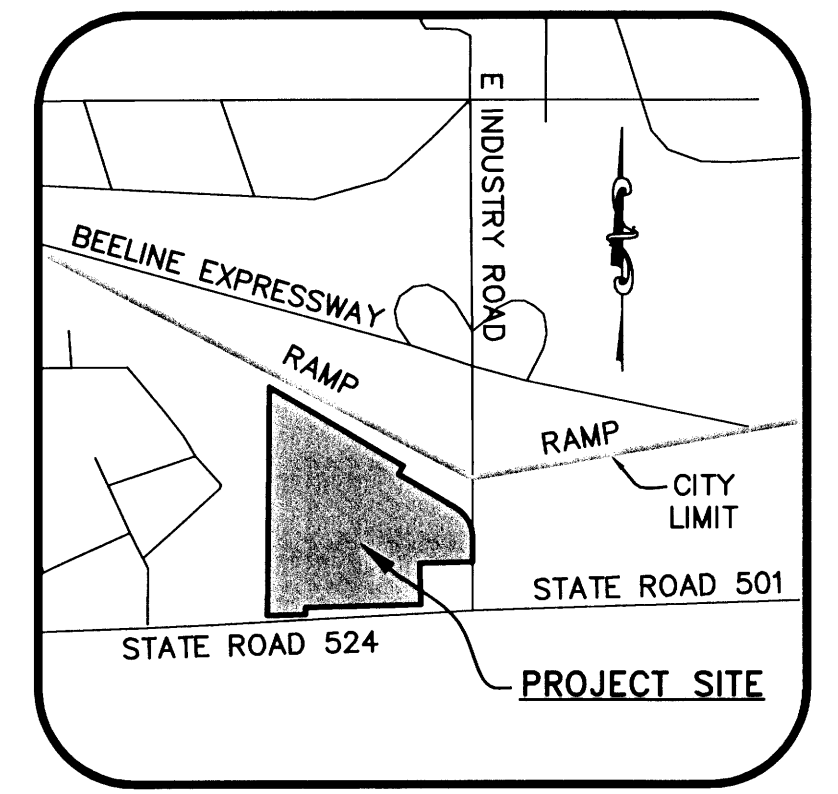
S01°25'21"E 35.00'

NORTH R/W LINE OF
 STATE ROAD 524

WEST LINE OF THE EAST
 1/2 OF THE NORTHWEST
 1/4 OF SECTION 18,
 TOWNSHIP 24, SOUTH,
 RANGE 36 EAST.

POB
 FD CM, NO ID#
 5.4' WEST OF
 END OF FENCE
 (HELD AS PRM)

POC
 SOUTHWEST CORNER OF THE
 EAST 1/2 OF THE NORTHWEST
 1/4 OF SECTION 18, TOWNSHIP
 24 SOUTH, RANGE 36 EAST



LOCATION MAP
 N.T.S.

SOUTH LINE OF THE NORTHWEST 1/4 OF SECTION 18, TOWNSHIP 24 SOUTH, RANG 36 EAST.

NORTH R/W LINE OF
 STATE ROAD 524

S88°34'39"W 601.24'

S88°34'39"W 199.35'

N00°30'56"E 218.60'

S1°25'21"E 3.28'

N88°18'00"E 853.97'(TOTAL)

S88°18'00"W 870.37'(TOTAL)

S1°25'21"E 3.28'

N88°18'00"E 853.97'(TOTAL)

S88°18'00"W 870.37'(TOTAL)

S1°25'21"E 3.28'

N88°18'00"E 853.97'(TOTAL)

S88°18'00"W 870.37'(TOTAL)

S1°25'21"E 3.28'

N88°18'00"E 853.97'(TOTAL)

S88°18'00"W 870.37'(TOTAL)

S1°25'21"E 3.28'

N88°18'00"E 853.97'(TOTAL)

S88°18'00"W 870.37'(TOTAL)

S1°25'21"E 3.28'

N88°18'00"E 853.97'(TOTAL)

S88°18'00"W 870.37'(TOTAL)

S1°25'21"E 3.28'

N88°18'00"E 853.97'(TOTAL)

S88°18'00"W 870.37'(TOTAL)

S1°25'21"E 3.28'

N88°18'00"E 853.97'(TOTAL)

S88°18'00"W 870.37'(TOTAL)

S1°25'21"E 3.28'

N88°18'00"E 853.97'(TOTAL)

S88°18'00"W 870.37'(TOTAL)

S1°25'21"E 3.28'

N88°18'00"E 853.97'(TOTAL)

S88°18'00"W 870.37'(TOTAL)

S1°25'21"E 3.28'

N88°18'00"E 853.97'(TOTAL)

S88°18'00"W 870.37'(TOTAL)

S1°25'21"E 3.28'

N88°18'00"E 853.97'(TOTAL)

S88°18'00"W 870.37'(TOTAL)

S1°25'21"E 3.28'

N88°18'00"E 853.97'(TOTAL)

S88°18'00"W 870.37'(TOTAL)

S1°25'21"E 3.28'

N88°18'00"E 853.97'(TOTAL)

S88°18'00"W 870.37'(TOTAL)

S1°25'21"E 3.28'

N88°18'00"E 853.97'(TOTAL)

S88°18'00"W 870.37'(TOTAL)

S1°25'21"E 3.28'

N88°18'00"E 853.97'(TOTAL)

S88°18'00"W 870.37'(TOTAL)

S1°25'21"E 3.28'

N88°18'00"E 853.97'(TOTAL)

S88°18'00"W 870.37'(TOTAL)

S1°25'21"E 3.28'

N88°18'00"E 853.97'(TOTAL)

S88°18'00"W 870.37'(TOTAL)

S1°25'21"E 3.28'

N88°18'00"E 853.97'(TOTAL)

S88°18'00"W 870.37'(TOTAL)

S1°25'21"E 3.28'

N88°18'00"E 853.97'(TOTAL)

S88°18'00"W 870.37'(TOTAL)

S1°25'21"E 3.28'

N88°18'00"E 853.97'(TOTAL)

S88°18'00"W 870.37'(TOTAL)

S1°25'21"E 3.28'

N88°18'00"E 853.97'(TOTAL)

S88°18'00"W 870.37'(TOTAL)

S1°25'21"E 3.28'

N88°18'00"E 853.97'(TOTAL)

S88°18'00"W 870.37'(TOTAL)

S1°25'21"E 3.28'

N88°18'00"E 853.97'(TOTAL)

S88°18'00"W 870.37'(TOTAL)

S1°25'21"E 3.28'

N88°18'00"E 853.97'(TOTAL)

S88°18'00"W 870.37'(TOTAL)

S1°25'21"E 3.28'

N88°18'00"E 853.97'(TOTAL)

S88°18'00"W 870.37'(TOTAL)

S1°25'21"E 3.28'

N88°18'00"E 853.97'(TOTAL)

S88°18'00"W 870.37'(TOTAL)

S1°25'21"E 3.28'

N88°18'00"E 853.97'(TOTAL)

S88°18'00"W 870.37'(TOTAL)

S1°25'21"E 3.28'

N88°18'00"E 853.97'(TOTAL)

S88°18'00"W 870.37'(TOTAL)

S1°25'21"E 3.28'

N88°18'00"E 853.97'(TOTAL)

S88°18'00"W 870.37'(TOTAL)

S1°25'21"E 3.28'

N88°18'00"E 853.97'(TOTAL)

S88°18'00"W 870.37'(TOTAL)

S1°25'21"E 3.28'

N88°18'00"E 853.97'(TOTAL)

S88°18'00"W 870.37'(TOTAL)

S1°25'21"E 3.28'

N88°18'00"E 853.97'(TOTAL)

S88°18'00"W 870.37'(TOTAL)

S1°25'21"E 3.28'

N88°18'00"E 853.97'(TOTAL)

S88°18'00"W 870.37'(TOTAL)

S1°25'21"E 3.28'

N88°18'00"E 853.97'(TOTAL)

S88°18'00"W 870.37'(TOTAL)

S1°25'21"E 3.28'

N88°18'00"E 853.97'(TOTAL)

S88°18'00"W 870.37'(TOTAL)

S1°25'21"E 3.28'

N88°18'00"E 853.97'(TOTAL)

S88°18'00"W 870.37'(TOTAL)

S1°25'21"E 3.28'

N88°18'00"E 853.97'(TOTAL)

S88°18'00"W 870.37'(TOTAL)

S1°25'21"E 3.28'

N88°18'00"E 853.97'(TOTAL)

S88°18'00"W 870.37'(TOTAL)

S1°25'21"E 3.28'

N88°18'00"E 853.97'(TOTAL)

S88°18'00"W 870.37'(TOTAL)

S1°25'21"E 3.28'

N88°18'00"E 853.97'(TOTAL)

S88°18'00"W 870.37'(TOTAL)

S1°25'21"E 3.28'

N88°18'00"E 853.97'(TOTAL)

S88°18'00"W 870.37'(TOTAL)

S1°25'21"E 3.28'

N88°18'00"E 853.97'(TOTAL)

S88°18'00"W 870.37'(TOTAL)

S1°25'21"E 3.28'

N88°18'00"E 853.97'(TOTAL)

S88°18'00"W 870.37'(TOTAL)

S1°25'21"E 3.28'

N88°18'00"E 853.97'(TOTAL)

S88°18'00"W 870.37'(TOTAL)

S1°25'21"E 3.28'

N88°18'00"E 853.97'(TOTAL)

S88°18'00"W 870.37'(TOTAL)

S1°25'21"E 3.28'

N88°18'00"E 853.97'(TOTAL)

S88°18'00"W 870.37'(TOTAL)

S1°25'21"E 3.28'

N88°18'00"E 853.97'(TOTAL)

S88°18'00"W 870.37'(TOTAL)

S1°25'21"E 3.28'

N88°18'00"E 853.97'(TOTAL)

S88°18'00"W 870.37'(TOTAL)

S1°25'21"E 3.28'

N88°18'00"E 853.97'(TOTAL)

S88°18'00"W 870.37'(TOTAL)

S1°25'21"E 3.28'

N88°18'00"E 853.97'(TOTAL)

S88°18'00"W 870.37'(TOTAL)

S1°25'21"E 3.28'

N88°18'00"E 853.97'(TOTAL)

S88°18'00"W 870.37'(TOTAL)

S1°25'21"E 3.28'

N88°18'00"E 853.97'(TOTAL)

S88°18'00"W 870.37'(TOTAL)

S1°25'21"E 3.28'

N88°18'00"E 853.97'(TOTAL)

S88°18'00"W 870.37'(TOTAL)

S1°25'21"E 3.28'

N88°18'00"E 853.97'(TOTAL)

S88°18'00"W 870.37'(TOTAL)

S1°25'21"E 3.28'

N88°18'00"E 853.97'(TOTAL)

S88°18'00"W 870.37'(TOTAL)

S1°25'21"E 3.28'

N88°18'00"E 853.97'(TOTAL)

S88°18'00"W 870.37'(TOTAL)

S1°25'21"E 3.28'

N88°18'00"E 853.97'(TOTAL)

S88°18'00"W 870.37'(TOTAL)

S1°25'21"E 3.28'

N88°18'00"E 853.97'(TOTAL)

S88°18'00"W 870.37'(TOTAL)

S1