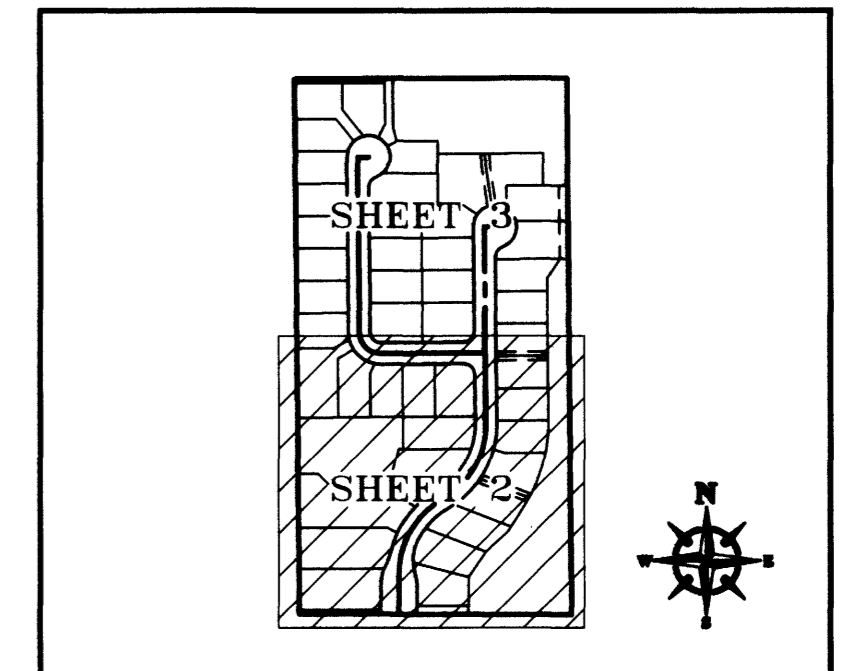
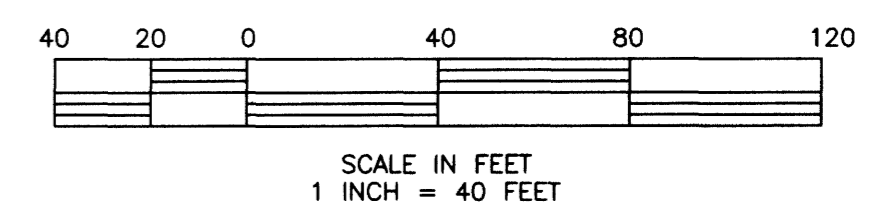




Bella Luna
 A REPLAT OF A PORTION OF LOT 4,
 FLORIDA INDIAN RIVER LAND COMPANY, PLAT BOOK 1, PAGE 164
 A SUBDIVISION LOCATED WITHIN
 SECTION 5, TOWNSHIP 28 SOUTH, RANGE 37 EAST
 CITY OF WEST MELBOURNE, BREVARD COUNTY, FLORIDA



KEY MAP
 (NOT TO SCALE)

LEGEND AND ABBREVIATIONS

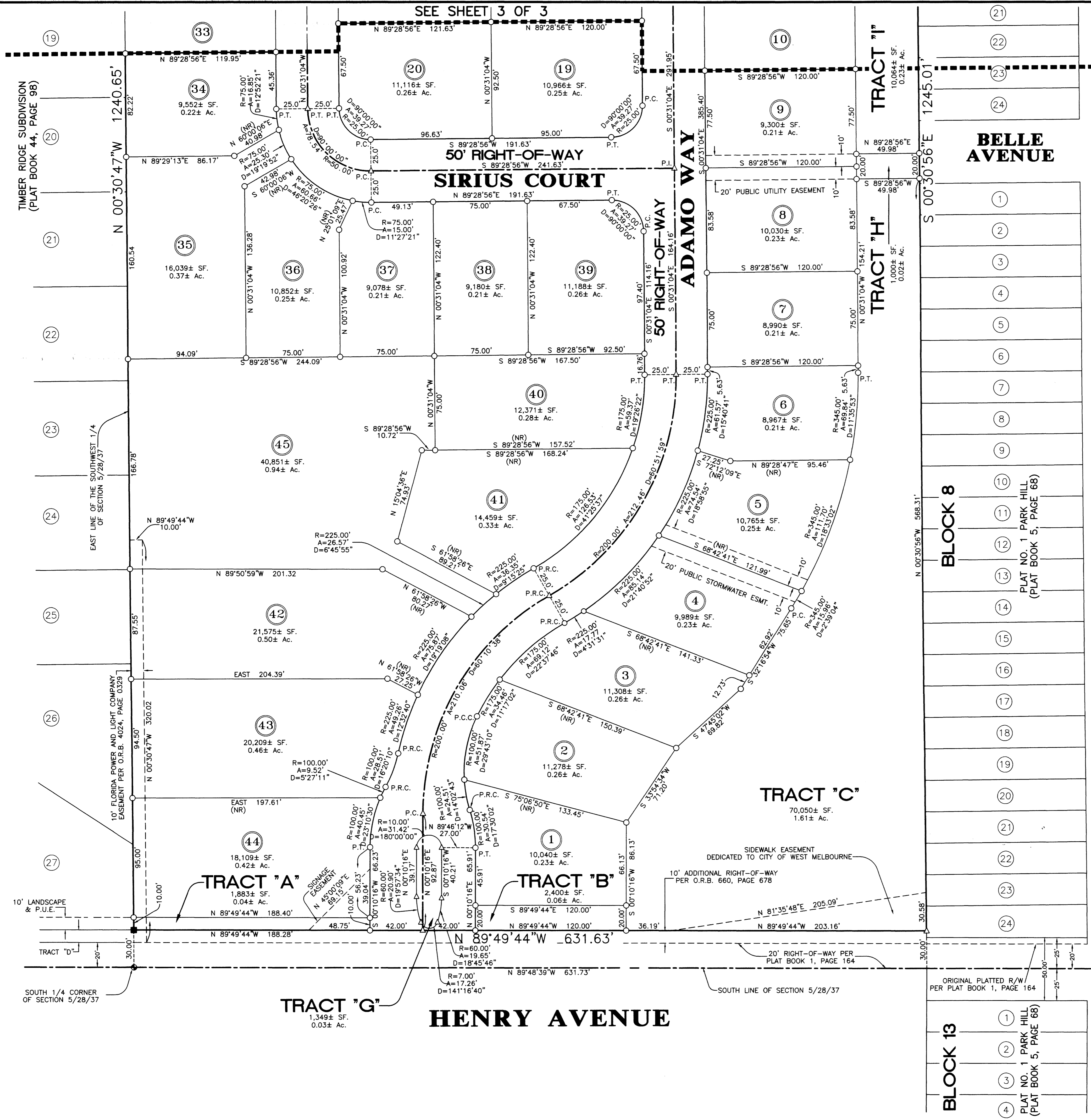
- = SET P.R.M. 4" x 4" CONCRETE MONUMENT
 "P.R.M. K.A. SMITH LB 6426"
- △ = SET P.C.P. PK NAIL & DISK
 "P.C.P. K.A. SMITH LB 6426"
- = SET 1/2" IRON ROD AND CAP
 "K.A. SMITH LB 6426"
- = FOUND P.R.M. 4" x 4" CONCRETE MONUMENT
 "5383"
- P.C.P. = PERMANENT CONTROL POINT
- P.R.M. = PERMANENT REFERENCE MONUMENT
- P.R.C. = POINT OF REVERSE CURVE
- P.T. = POINT OF TANGENCY
- P.C. = POINT OF CURVATURE
- R.P. = RADIUS POINT
- P.I. = POINT OF INTERSECTION
- O.R.B. = OFFICIAL RECORDS BOOK
- ESMT. = EASEMENT
- ± = MORE OR LESS
- Ac. = ACRES
- SF. = SQUARE FEET
- R = RADIUS
- A = ARC
- D = DELTA
- P.U. & D.E. = PUBLIC UTILITY AND DRAINAGE EASEMENT
- (R) = RADIAL
- (NR) = NON-RADIAL

NOTICE: THIS PLAT, AS RECORDED IN ITS GRAPHIC FORM, IS THE OFFICIAL DEPICTION OF THE SUBDIVIDED LANDS DESCRIBED HEREIN AND WILL IN NO CIRCUMSTANCES BE SUPPLANTED IN AUTHORITY BY ANY OTHER GRAPHIC OR DIGITAL FORM OF THE PLAT. THERE MAY BE ADDITIONAL RESTRICTIONS THAT ARE NOT RECORDED ON THIS PLAT THAT MAY BE FOUND IN THE PUBLIC RECORDS OF THIS COUNTY.

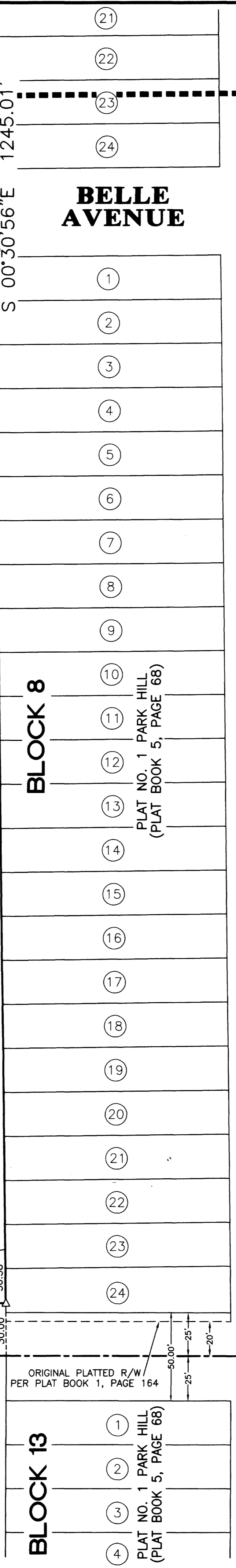
PREPARED BY:



4690 LIPSCOMB STREET N.E., SUITE 9, PALM BAY, FLORIDA 32905
 Brevard(321)724-2940 Indian River(772)589-3228 Fax(321)951-4879
 E-MAIL: SMITHSURVEYING@AOL.COM
 DRAWN BY: R. TODD KEESEE
 DRAWING NUMBER: BL-PLT2.DWG
 LOTS REVISED/LIFT STATION TRACT ADDED MARCH 22, 2005 05-0963
 REVISED PER CITY OF WEST MELBOURNE COMMENTS JUNE 3, 2005 05-1683
 REVISED PER ADDITIONAL CITY OF WEST MELBOURNE COMMENTS JUNE 27, 2005 05-1891
 REVISED PER ADDITIONAL COMMENTS OCTOBER 27, 2005 05-3069
 REVISED TRACT 70 NOVEMBER 18, 2005 05-3245
 REVISED PER ADDITIONAL COMMENTS MARCH 14, 2006 06-0504
 REVISED LOTS 42 AND 45 JUNE 8, 2007
 2.5' SIDEWALK EASEMENT ADDED JUNE 28, 2007
 DEDICATION ADDED DECEMBER 19, 2007
 REVISED PER COMMENTS JANUARY 15, 2008



PARK HILL BOULEVARD



TIMBER RIDGE SUBDIVISION (PLAT BOOK 44, PAGE 98)

SOUTH 1/4 CORNER OF SECTION 5/28/37

10' LANDSCAPE & P.U.E.

10' FLORIDA POWER AND LIGHT COMPANY EASEMENT PER O.R.B. 4024, PAGE 0329

SIDEWALK EASEMENT DEDICATED TO CITY OF WEST MELBOURNE

10' ADDITIONAL RIGHT-OF-WAY PER O.R.B. 660, PAGE 678

20' RIGHT-OF-WAY PER PLAT BOOK 1, PAGE 164

ORIGINAL PLATTED R/W PER PLAT BOOK 1, PAGE 164

HENRY AVENUE

BELLE AVENUE

SIRIUS COURT

TRACT "G"
 1,349± SF.
 0.03± Ac.

TRACT "C"
 70,050± SF.
 1.61± Ac.

TRACT "B"
 2,400± SF.
 0.06± Ac.

TRACT "A"
 1,883± SF.
 0.04± Ac.

SEE SHEET 3 OF 3