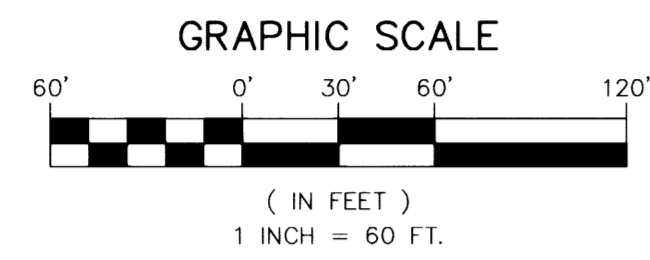
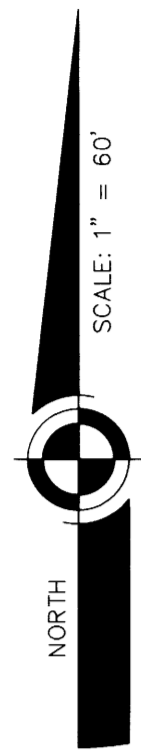


Park Place Subdivision

A SUBDIVISION LYING IN SECTION 6, TOWNSHIP 22 SOUTH, RANGE 35 EAST, CITY OF TITUSVILLE, BREVARD COUNTY, FLORIDA.



LINE	LENGTH	BEARING
L3	30.62'	S89°55'22"E
L4	25.00'	S00°04'40"E
L5	25.00'	S00°04'40"E

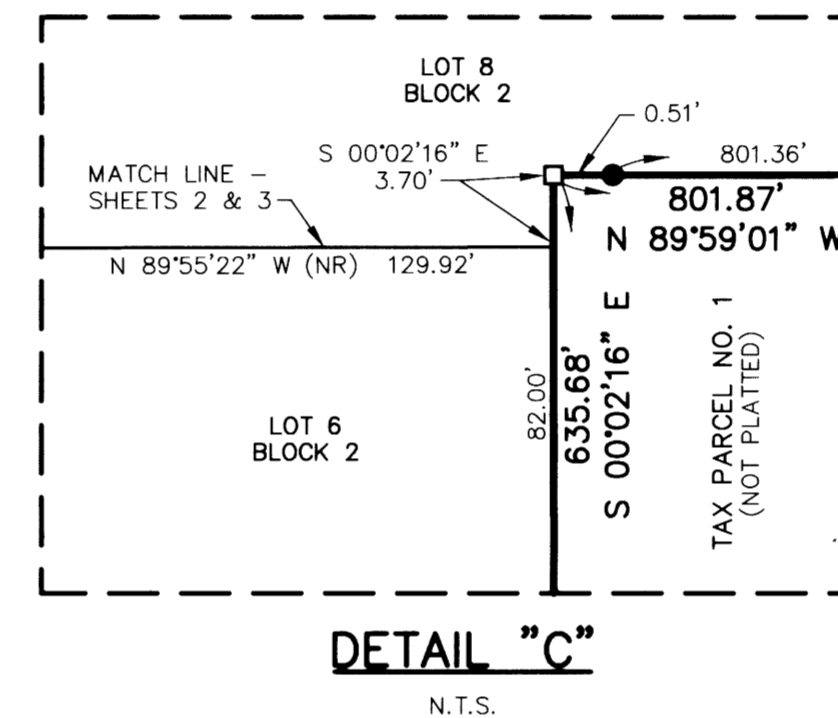
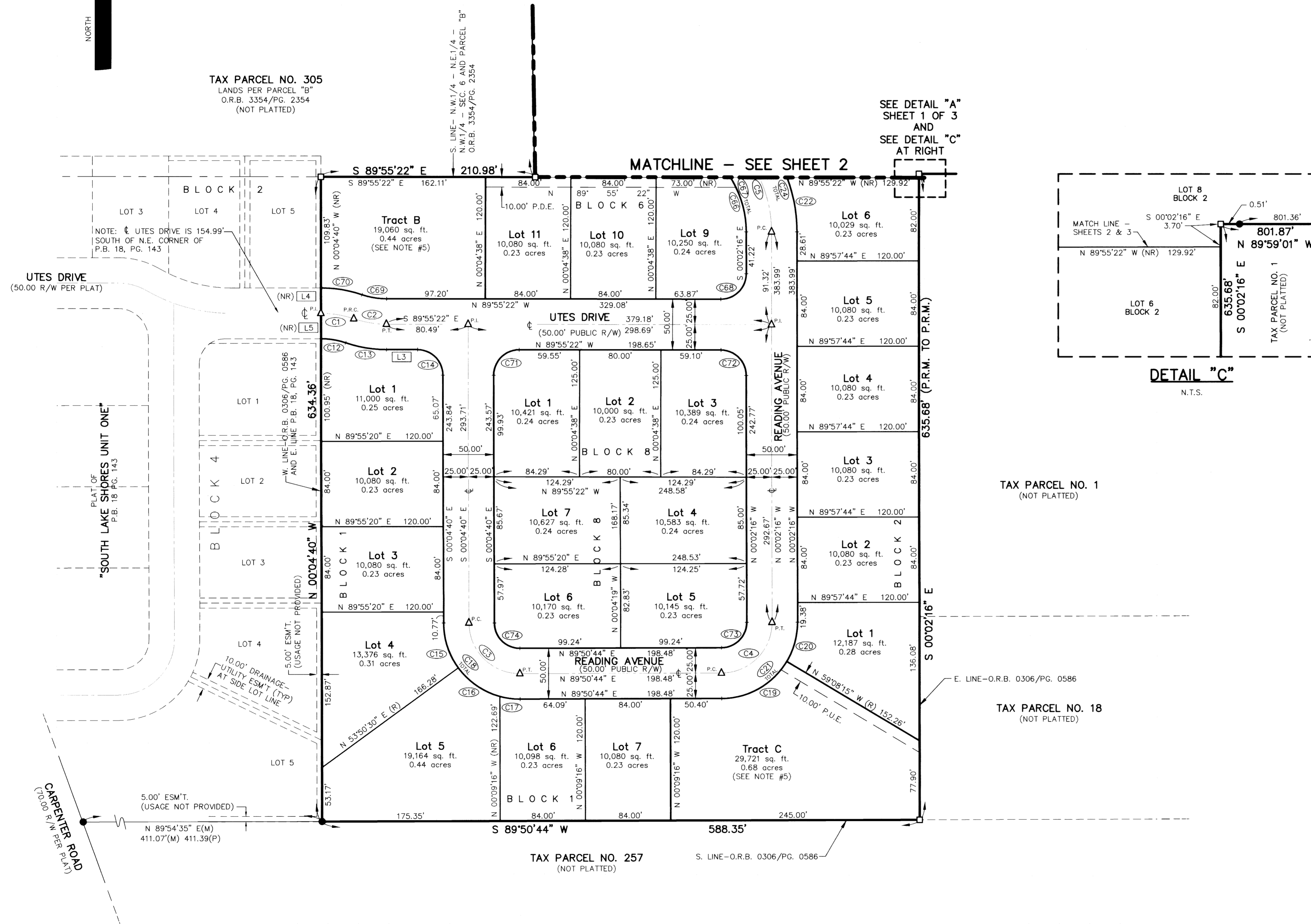
CURVE	RADIUS	DELTA	LENGTH	TANGENT	CHORD	BEARING
C1	100.00'	18°53'23"	32.97'	16.64'	32.82'	N80°36'41"W
C2	100.00'	18°45'22"	32.74'	16.52'	32.59'	S80°32'41"E
C3	50.00'	90°04'37"	78.61'	50.00'	70.76'	S45°06'59"E
C4	50.00'	89°53'00"	78.44'	49.90'	70.64'	N44°54'14"E
C5	125.00'	44°53'54"	97.95'	51.65'	95.47'	N22°29'13"W
C12	75.00'	18°52'57"	24.72'	12.47'	24.61'	N80°36'28"W
C13	125.00'	18°45'22"	40.92'	20.64'	40.74'	S80°32'41"E
C14	25.00'	89°50'41"	39.20'	24.93'	35.31'	N45°00'01"W
C15	75.00'	36°04'50"	47.23'	24.43'	46.45'	S18°07'05"E

CURVE	RADIUS	DELTA	LENGTH	TANGENT	CHORD	BEARING
C16	75.00'	38°35'58"	50.53'	26.26'	49.58'	S55°27'29"E
C17	75.00'	15°23'49"	20.15'	10.14'	20.09'	S82°27'22"E
C18	75.00'	90°04'37"	77.91'	49.42'	73.84'	S45°06'59"E
C19	75.00'	58°58'59"	77.91'	49.42'	73.84'	N60°21'14"E
C20	75.00'	30°54'01"	40.45'	20.73'	39.96'	N15°24'44"E
C21	75.00'	89°53'00"	117.66'	74.85'	105.96'	N44°54'14"E
C22	150.00'	20°57'26"	54.87'	27.74'	54.56'	N10°30'59"W
C24	150.00'	44°53'54"	117.54'	61.98'	114.56'	N22°29'13"W
C66	100.00'	32°31'21"	56.76'	29.17'	56.00'	N161°7'05"E

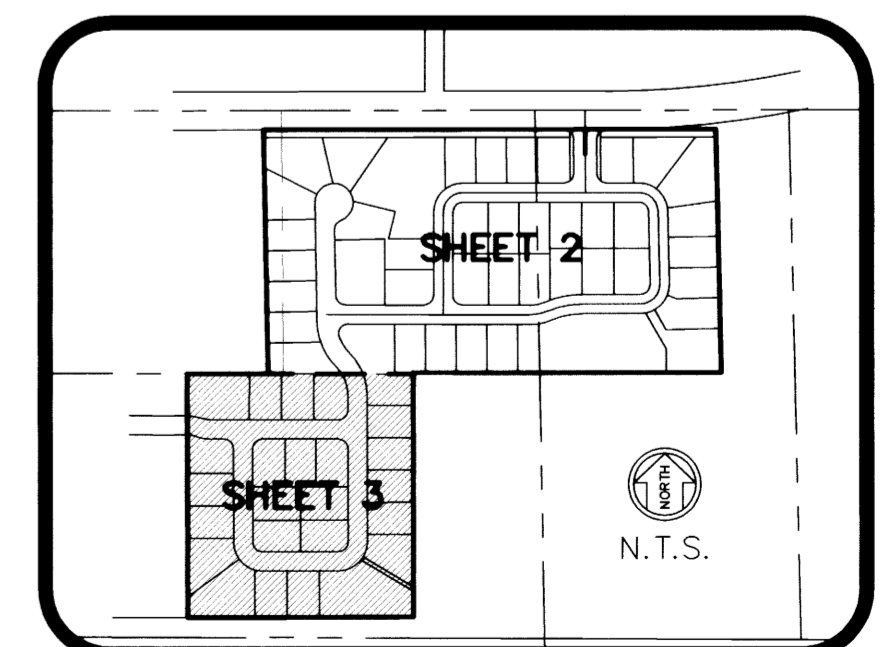
CURVE	RADIUS	DELTA	LENGTH	TANGENT	CHORD	BEARING
C67	100.00'	44°53'54"	78.36'	41.32'	76.37'	N22°29'13"W
C68	25.00'	90°06'56"	39.32'	25.05'	35.39'	N45°01'12"E
C69	75.00'	18°45'22"	24.55'	12.39'	24.44'	S80°32'41"E
C70	125.00'	18°53'38"	41.22'	20.80'	41.03'	N80°36'49"W
C71	25.00'	90°09'19"	39.34'	25.07'	35.40'	N44°59'59"E
C72	25.00'	89°53'06"	39.22'	24.95'	35.32'	S44°58'49"E
C73	25.00'	89°53'00"	39.22'	24.95'	35.32'	S44°58'49"E
C74	25.00'	90°04'37"	39.30'	25.03'	35.38'	N45°06'59"W

TAX PARCEL NO. 305
LANDS PER PARCEL "B"
O.R.B. 3354/PG. 2354
(NOT PLATTED)

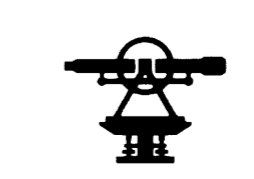
SEE DETAIL "A"
SHEET 1 OF 3
AND
SEE DETAIL "C"
AT RIGHT



- LEGEND**
- BM EG BUSEN-MAYER ENGINEERING GROUP, INC.
 - C.E.G. CANAVERAL ENGINEERING GROUP
 - FND. FOUND
 - C.M. CONCRETE MONUMENT
 - R.R.S. RAILROAD SPIKE
 - REB/C REBAR WITH SURVEY CAP
 - R.B. REBAR (NO CAP)
 - P.K. PARKER-KAYLON NAIL
 - P.L.S. PROFESSIONAL LAND SURVEYOR
 - LB LICENSED BUSINESS
 - PRM PERMANENT REFERENCE MONUMENT
 - O.R.B. OFFICIAL RECORDS BOOK
 - P.B. PLAT BOOK
 - D.B. DEED BOOK
 - R.P.B. ROAD PLAT BOOK
 - PG. PAGE
 - (XX.XXCH) DISTANCE IN CHAINS
 - (S.R.D.) STATE ROAD DEPARTMENT
 - (N.T.S.) NOT TO SCALE
 - R. RADIUS
 - Δ CENTRAL ANGLE
 - L ARC LENGTH
 - (R) RADIAL LINE
 - (NR) NON-RADIAL LINE
 - (D) DEED VALUES/DATA
 - (M) SURVEYED VALUES/DATA
 - (P) EXISTING PLAT VALUES/DATA
 - (I) INTERSECTION
 - P.I. POINT-OF-INTERSECTION
 - P.C. POINT-OF-CURVATURE
 - P.T. POINT-OF-TANGENCY
 - P.R.C. POINT-OF-REVERSE CURVATURE
 - R.P. RADIUS POINT
 - R/W RIGHT-OF-WAY
 - P.D.E. PRIVATE DRAINAGE EASEMENT
 - P.U.E. PRIVATE UTILITY EASEMENT
 - [L3] LINE TABLE NUMBER
 - [C6] CURVE TABLE NUMBER
 - ⊕ LOT NUMBER
 - ⊕ CENTERLINE
 - ⊕ SECTION
 - T. TWP. TOWNSHIP
 - R. RANGE



KEY MAP



Bussen-Mayer Engineering Group

100 PARNELL STREET • MERRITT ISLAND, FLORIDA 32953
PH. NO.: (321) 453-0010

