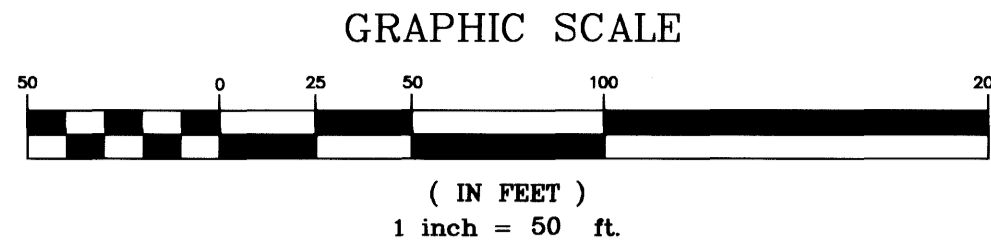


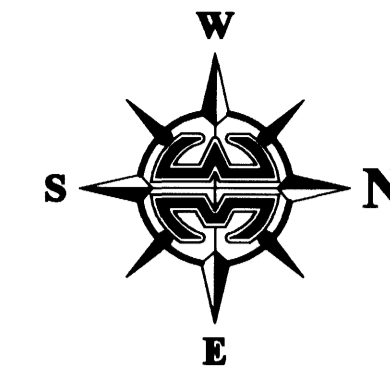
PREPARED BY:
WILLIAM MOTT LAND SURVEYING INC.
 3716 NORTH WICKHAM ROAD, SUITE 3
 MELBOURNE, FLORIDA 32935-2338
 PHONE (321) 751-4444 FAX (321) 751-4445
 PROJECT NUMBER: 204-0420
 DRAWING NAME: ADAMSON CREEK PHASE 1-A.DWG
 DRAWN BY: DANIEL D. GARNER P.S.M. 6189
 CHECKED BY: JONATHAN M. MOTT, P.L.S. 5060



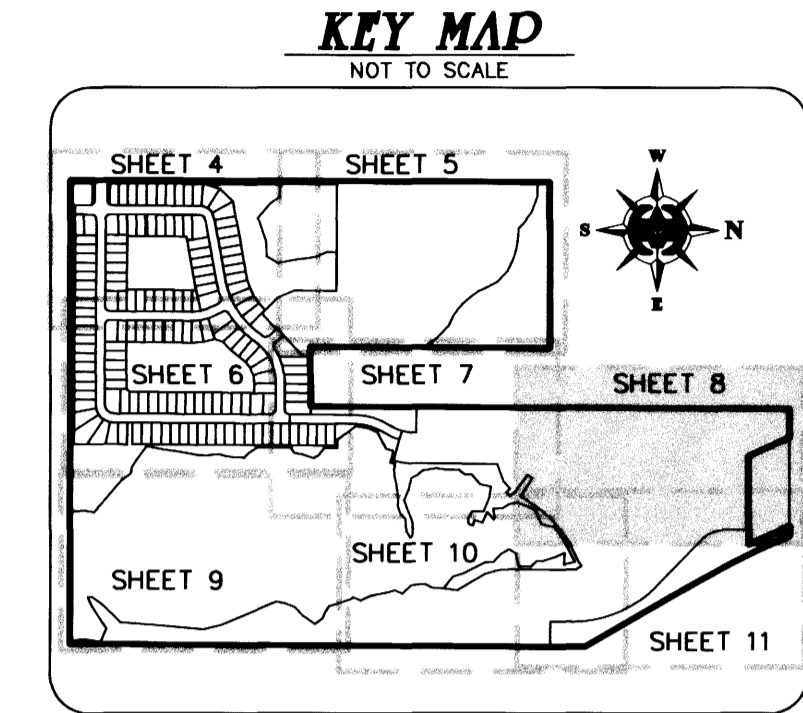
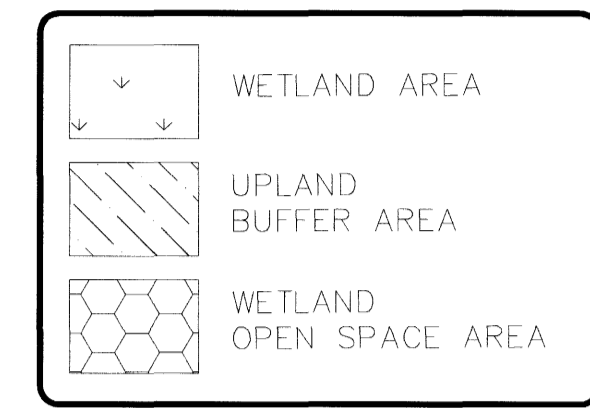
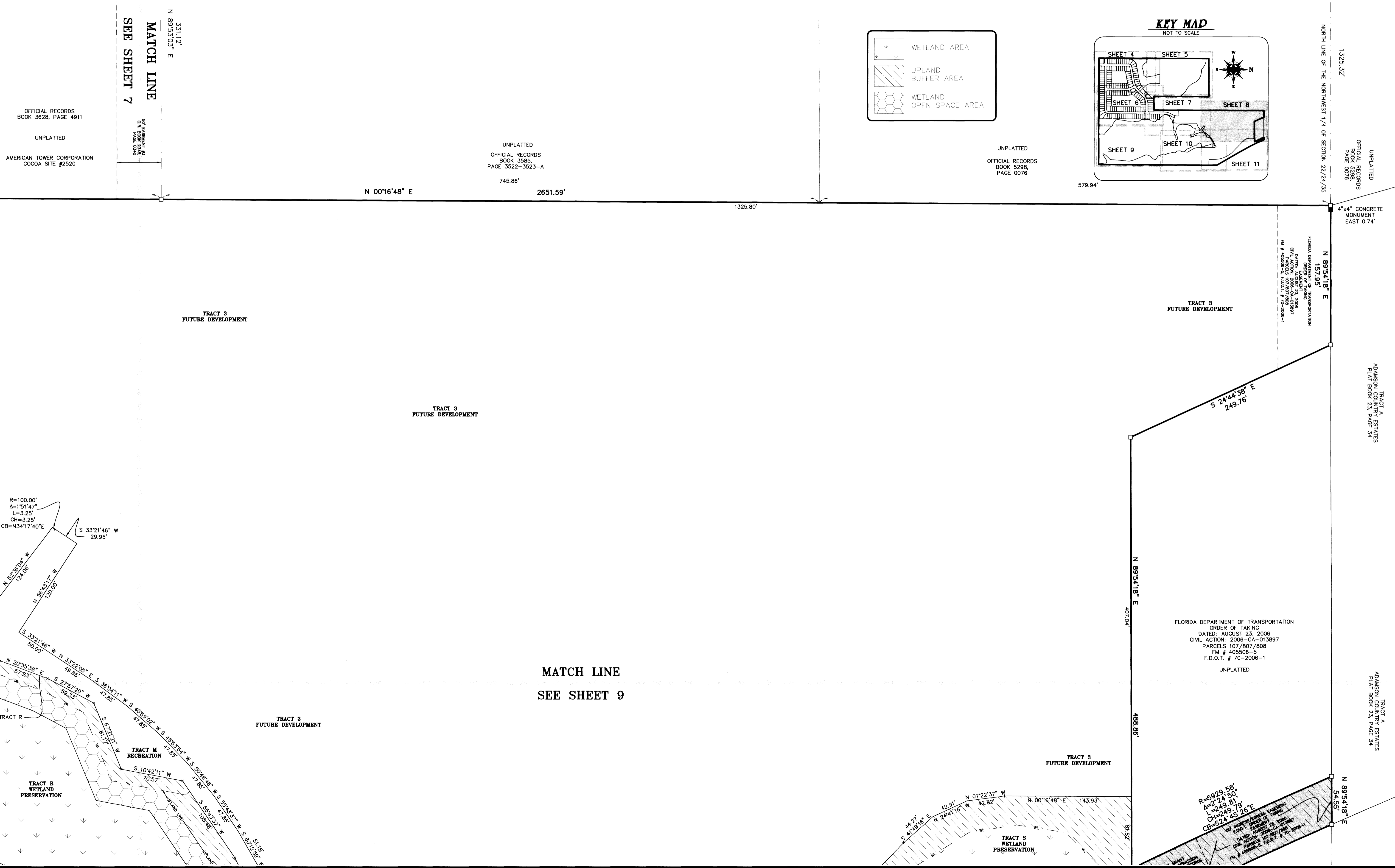
ADAMSON CREEK PHASE ONE-A

SECTION 22, TOWNSHIP 24 SOUTH, RANGE 35 EAST

CITY OF COCOA, COUNTY OF BREVARD, FLORIDA



PLAT BOOK 57 PAGE 56
 SHEET 8 OF 11
 SECTION 22 TWP. 24 S., RANGE 35 E.



UNPLATTED
 OFFICIAL RECORDS
 BOOK 5298,
 PAGE 0078

TRACT A
 ADAMSON COUNTRY ESTATES
 PLAT BOOK 23, PAGE 34

TRACT A
 ADAMSON COUNTRY ESTATES
 PLAT BOOK 23, PAGE 34

OFFICIAL RECORDS
 BOOK 3628, PAGE 4911

UNPLATTED
 AMERICAN TOWER CORPORATION
 COCOA SITE #2520

UNPLATTED
 OFFICIAL RECORDS
 BOOK 3585,
 PAGE 3522-3523-A

UNPLATTED
 OFFICIAL RECORDS
 BOOK 5298,
 PAGE 0076

FLORIDA DEPARTMENT OF TRANSPORTATION
 ORDER OF TAKING
 DATED: AUGUST 23, 2006
 CIVIL ACTION: 2006-CA-013897
 PARCELS 107/807/808
 FM # 405506-5
 F.D.O.T. # 70-2006-1
 UNPLATTED

R=100.00'
 Δ=151°47'
 L=3.25'
 CH=3.25'
 CB=N34°17'40"E

R=5929.58'
 Δ=224°50'
 L=249.81'
 CH=249.70'
 CB=S24°45'20"E

MATCH LINE
 SEE SHEET 9