

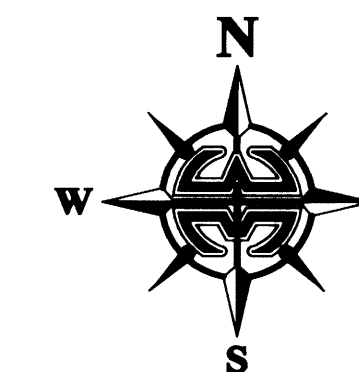
# ADAMSON CREEK PHASE ONE-A

## DETAIL OF SECTION BREAKDOWN

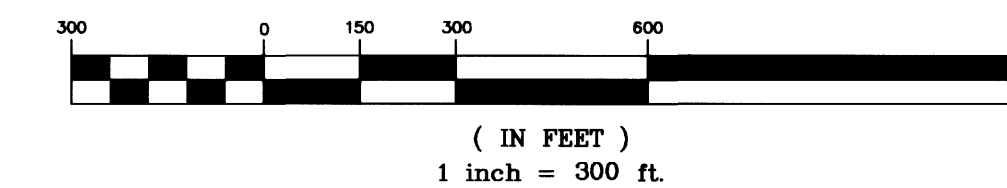
### SECTION 22, TOWNSHIP 24 SOUTH, RANGE 35 EAST CITY OF COCOA, COUNTY OF BREVARD, FLORIDA

PREPARED BY:  
**WILLIAM MOTT LAND SURVEYING INC.**

3716 NORTH WICKHAM ROAD, SUITE 3  
MELBOURNE, FLORIDA 32935-2338  
PHONE (321) 751-4444 FAX (321) 751-4445  
PROJECT NUMBER: 204-0420  
DRAWING NAME: 04-420-PREPLAT.DWG  
DRAWN BY: DANIEL D. GARNER, P.S.M. 6189  
CHECKED BY: JONATHAN M. MOTT, P.L.S. 5060



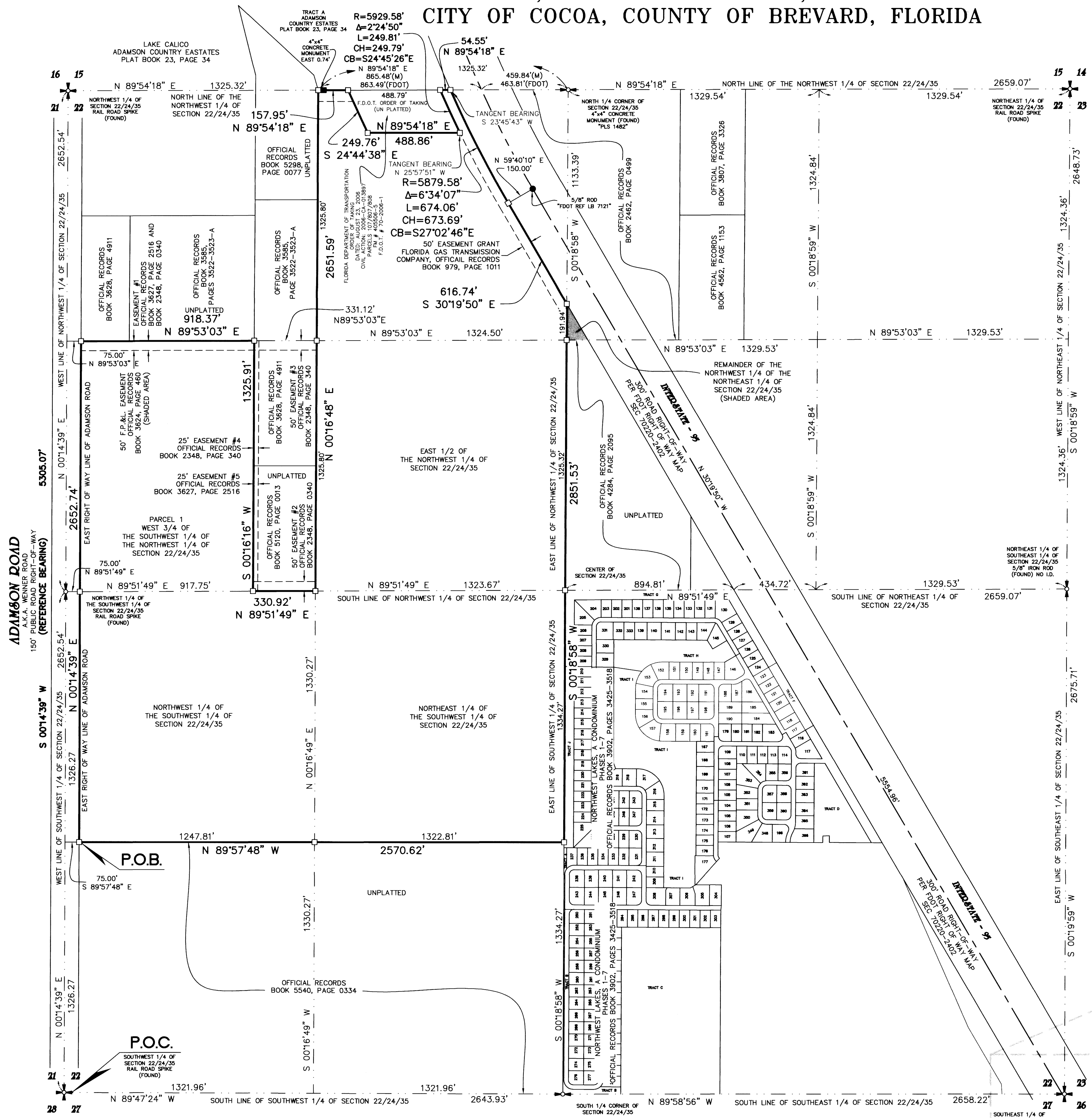
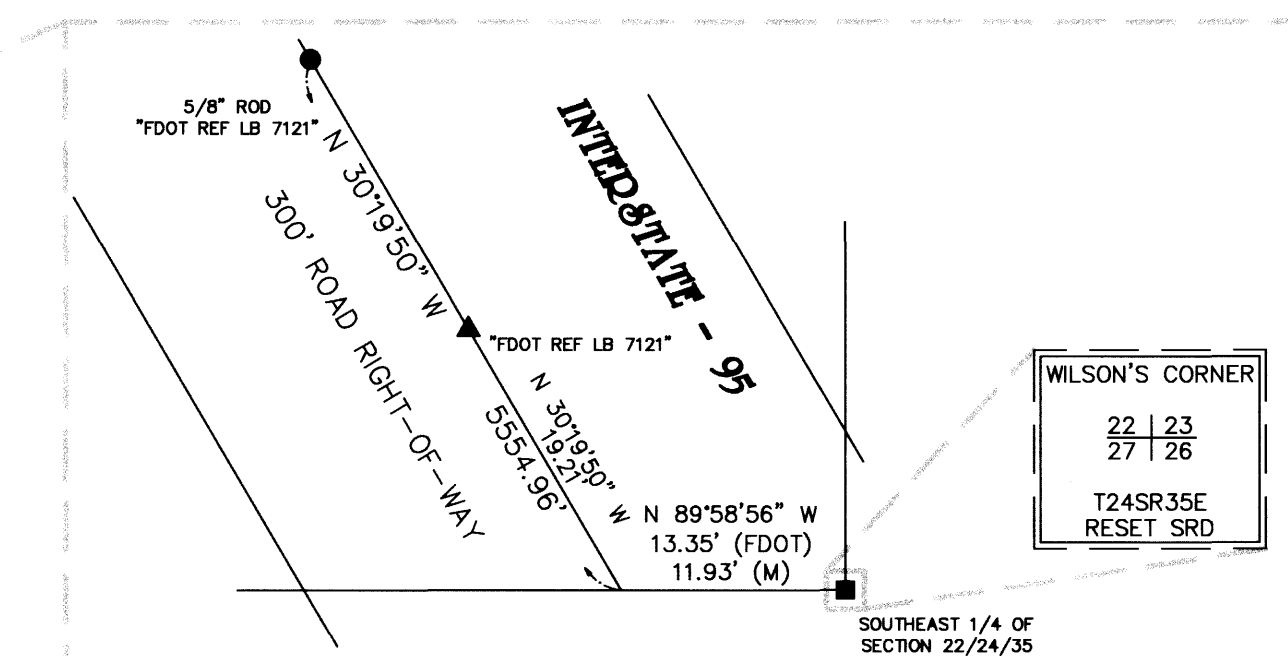
GRAPHIC SCALE



**LEGEND:**

□	= 4"x4" CONCRETE MONUMENT WITH NAIL AND DISK MARKED "PRM LB 3608" (SET)	X	= DENOTES LINE BREAK/CHANGE IN DIRECTION
●	= 4"x4" CONCRETE MONUMENT WITH NAIL AND DISK MARKED "PRM LB 3608" (FOUND), (UNLESS OTHERWISE SHOWN)	(R)	= RADIAL
○	= NAIL AND DISK MARKED "PCP LB 3608" (SET)	(NR)	= NON-RADIAL
△	= NAIL AND DISK MARKED "PCP LB 3608" (FOUND)	ESMT.	= EASEMENT
▲	= NAIL AND DISK MARKED "PRM LB 3608" (SET)	H.O.A.	= HOME OWNERS ASSOCIATION
▲	= NAIL AND DISK MARKED "PRM LB 3608" (FOUND)	LB	= LICENSED BUSINESS
PL#DE	= PUBLIC UTILITIES AND DRAINAGE EASEMENT	PLS	= PROFESSIONAL LAND SURVEYOR
C##	= CURVE NUMBER FOR CURVE TABLE	PSM	= PROFESSIONAL SURVEYOR AND MAPPER
L##	= LINE NUMBER FOR LINE TABLE	R	= RADIUS
R/W	= RIGHT-OF-WAY	D/Δ	= DELTA
P.B.	= PLAT BOOK	CD/CH	= CHORD DISTANCE
PS	= PAGE	CB	= CHORD BEARING
RP	= RADIUS POINT	BLK	= BLOCK
POL	= POINT-ON-LINE		
POC	= POINT-ON-CURVE		
PI	= POINT-OF-INTERSECTION		
PT	= POINT-OF-TANGENCY		
PC	= POINT-OF-CURVATURE		
PRC	= POINT-OF-REVERSE CURVATURE		
PCC	= POINT-OF-COMPOUND CURVATURE		
P.O.B.	= POINT-OF-BEGINNING		
P.O.C.	= POINT-OF-COMMENCEMENT		
PRM	= PERMANENT REFERENCE MONUMENT		
PCP	= PERMANENT CONTROL POINT		

DETAIL



ADAMSON ROAD  
150' PUBLIC ROAD RIGHT-OF-WAY  
(REFERENCE BEARING)

SOUTHWEST 1/4 OF SECTION 22/24/35  
4"x4" CONCRETE MONUMENT (FOUND)  
SEE DETAIL