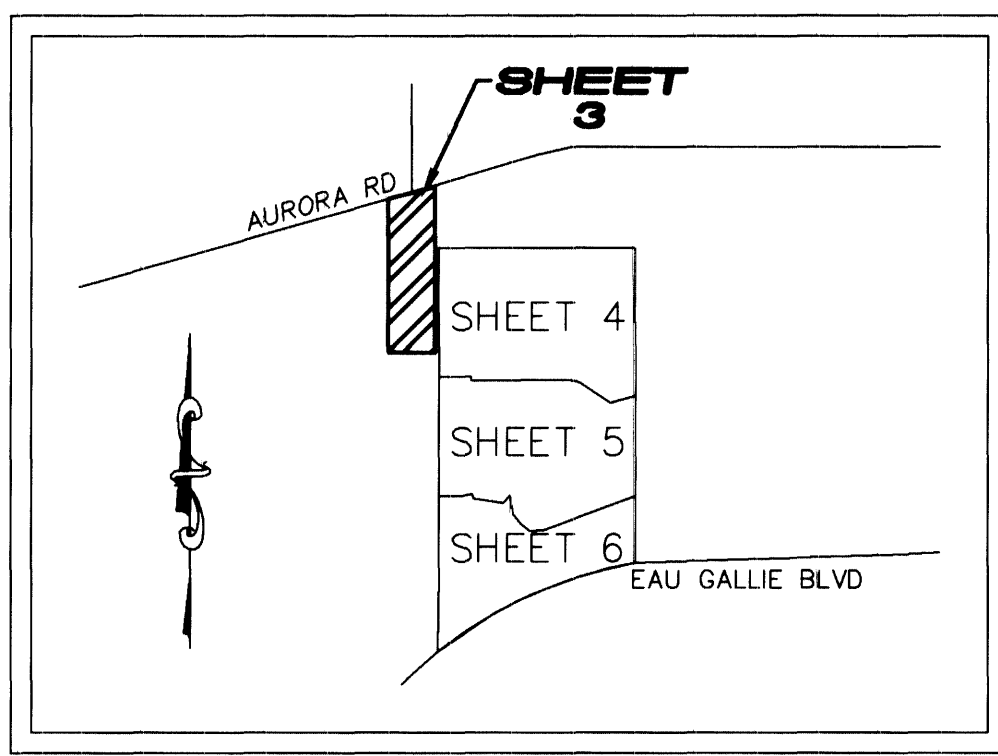


VERANDA PLACE

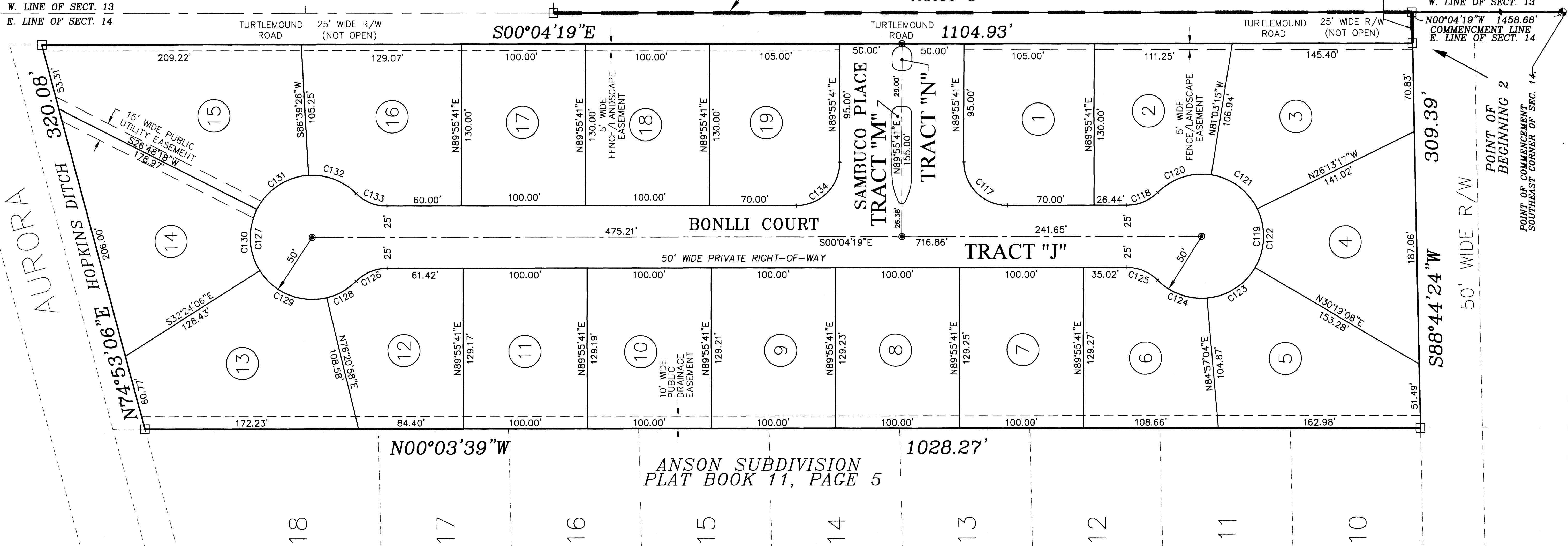
A SUBDIVISION LYING IN SECTIONS 13, 14 & 24, TOWNSHIP 27 SOUTH, RANGE 36 EAST BEING A REPLAT OF PORTIONS OF LOTS 56, 57, 58, 59, AND 78, INDIAN RIVER GROVES AND GARDENS, PLAT BOOK 6, PAGES 85 AND 86, THE CITY OF MELBOURNE, BREVARD COUNTY, FLORIDA.



KEY MAP
N.T.S.

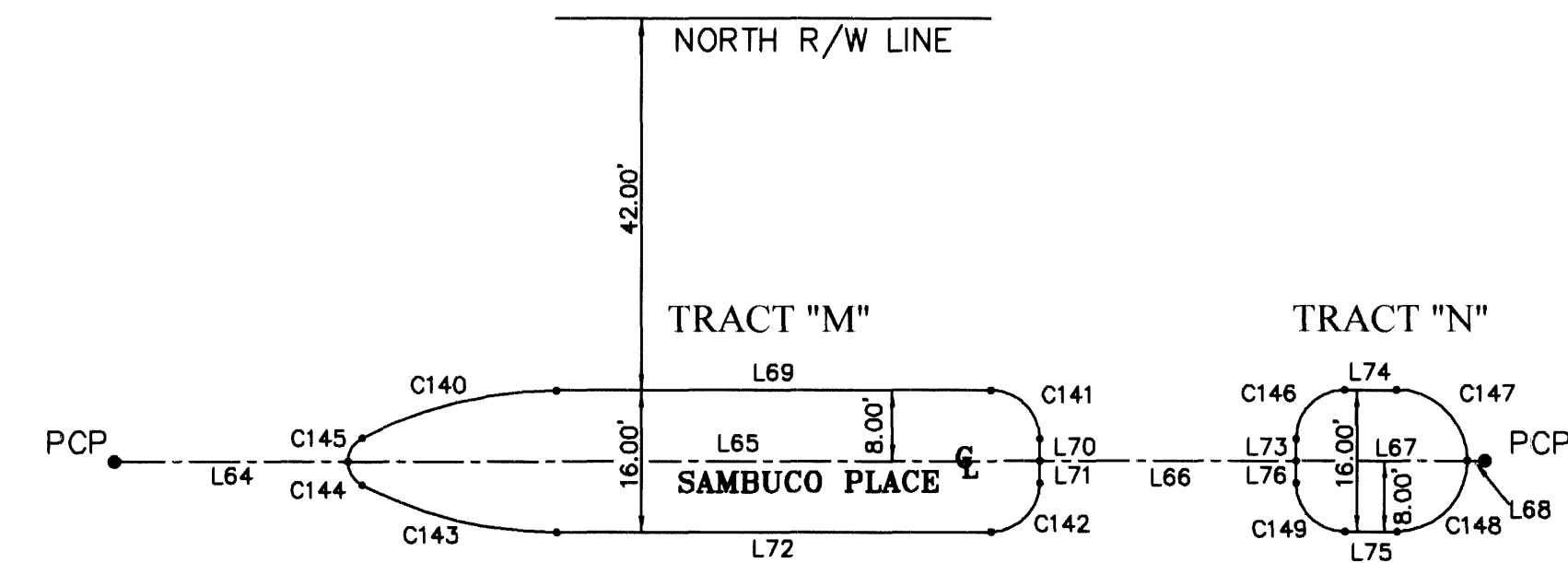
MATCHLINE "A"

SEE SHEET 4



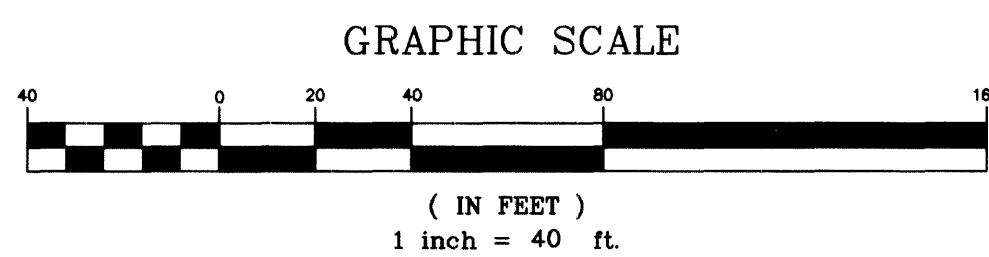
LINE	LENGTH	BEARING
L64	26.38'	N89°55'41"E
L65	78.24'	N89°55'41"E
L66	29.00'	N89°55'41"E
L67	19.37'	N89°55'41"E
L68	2.00'	N89°55'41"E
L69	49.13'	N89°55'41"E
L70	2.50'	S00°04'19"E
L71	2.50'	S00°04'19"E
L72	49.13'	S89°55'41"W
L73	2.50'	N00°04'19"W
L74	5.87'	N89°55'41"E
L75	5.87'	S89°55'41"W
L76	2.50'	N00°04'19"W

CURVE	RADIUS	LENGTH	CENTRAL ANGLE	CHORD	CHORD BEARING
C117	35.00'	54.98'	90°00'00"	49.50'	S44°55'41"W
C118	35.00'	27.55'	45°05'57"	26.84'	S22°37'18"E
C119	50.00'	235.79'	270°11'54"	70.59'	N89°55'41"E
C120	50.00'	47.23'	54°07'01"	45.49'	N18°06'46"W
C121	50.00'	47.85'	54°49'58"	46.05'	N36°21'44"E
C122	50.00'	49.34'	56°32'26"	47.36'	S87°57'05"E
C123	50.00'	47.68'	54°37'55"	45.89'	S32°21'54"E
C124	50.00'	43.70'	50°04'34"	42.32'	S19°59'21"W
C125	35.00'	27.55'	45°05'57"	26.84'	N22°28'39"E
C126	35.00'	27.55'	45°05'57"	26.84'	N22°37'18"W
C127	50.00'	235.79'	270°11'54"	70.59'	S89°55'41"W
C128	50.00'	27.51'	31°31'14"	27.16'	S29°24'39"E
C129	50.00'	62.18'	71°14'57"	58.25'	S21°58'26"W
C130	50.00'	51.67'	59°12'24"	49.40'	S87°12'06"W
C131	50.00'	52.23'	59°51'08"	49.89'	N33°16'08"W
C132	50.00'	42.21'	48°22'11"	40.97'	N20°50'32"E
C133	35.00'	27.55'	45°05'57"	26.84'	S22°28'39"W
C134	35.00'	54.98'	90°00'00"	49.50'	S45°04'19"E
C140	48.02'	22.84'	27°15'17"	22.63'	S76°17'41"W
C141	5.50'	8.64'	90°00'00"	7.78'	N45°04'19"W
C142	5.50'	8.64'	90°00'00"	7.78'	N44°55'41"E
C143	47.84'	22.84'	27°21'24"	22.63'	S76°26'17"E
C144	3.00'	3.28'	62°44'02"	3.12'	S31°26'21"E
C145	3.00'	3.28'	62°43'56"	3.12'	S31°17'39"W
C146	5.50'	8.64'	90°00'00"	7.78'	S44°55'41"W
C147	8.00'	12.57'	90°00'00"	11.31'	N45°04'19"W
C148	8.00'	12.57'	90°00'00"	11.31'	N44°55'41"E
C149	5.50'	8.64'	90°00'00"	7.78'	S45°04'19"E



TRACT M AND N DETAIL
1"=20'

- LEGEND**
- R/W RIGHT-OF-WAY
 - ORB OFFICIAL RECORDS BOOK
 - D.E. DRAINAGE EASEMENT
 - U&DE UTILITY AND DRAINAGE EASEMENT
 - Δ CURVE DELTA
 - R CURVE RADIUS
 - L CURVE LENGTH
 - NR NON-RADIAL
 - LB LICENSED BUSINESS
 - ⊙ CENTERLINE
 - 4"x4" CONCRETE MONUMENT SET
 - STAMPED "POWSHOK PRM No. 5383"
 - ⊙ NAIL AND DISK SET
 - STAMPED "POWSHOK PCP No. 5383"
 - SECT. SECTION



— PLAT PREPARED BY —
AAL LAND SURVEYING SERVICES, INC.
1103 W. HIBISCUS BLVD. SUITE 403
WEST MELBOURNE, FLORIDA 32904
(321) 768-8110

NOTICE: THIS PLAT, AS RECORDED IN ITS GRAPHIC FORM, IS THE OFFICIAL DEPICTION OF THE SUBDIVIDED LANDS DESCRIBED HEREIN AND WILL IN NO CIRCUMSTANCES BE SUPPLANTED IN AUTHORITY BY ANY OTHER GRAPHIC OR DIGITAL FORM OF THE PLAT. THERE MAY BE ADDITIONAL RESTRICTIONS THAT ARE NOT RECORDED ON THIS PLAT THAT MAY BE FOUND IN THE PUBLIC RECORDS OF THIS COUNTY.

PROJECT #16099 AAL-PLAT
DATED 9-18-07