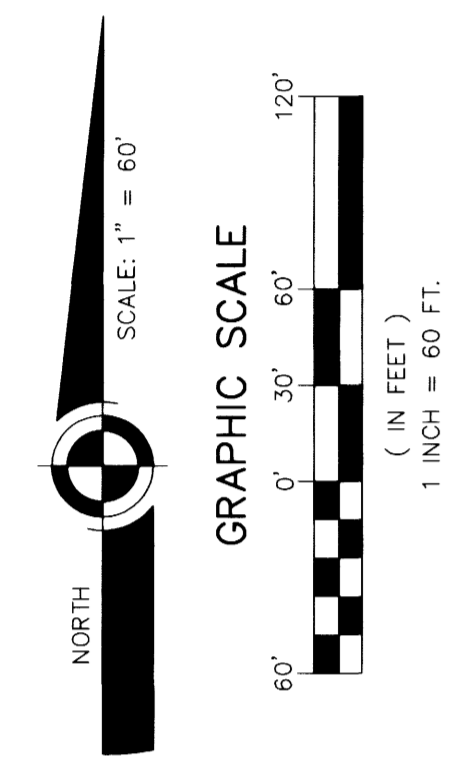
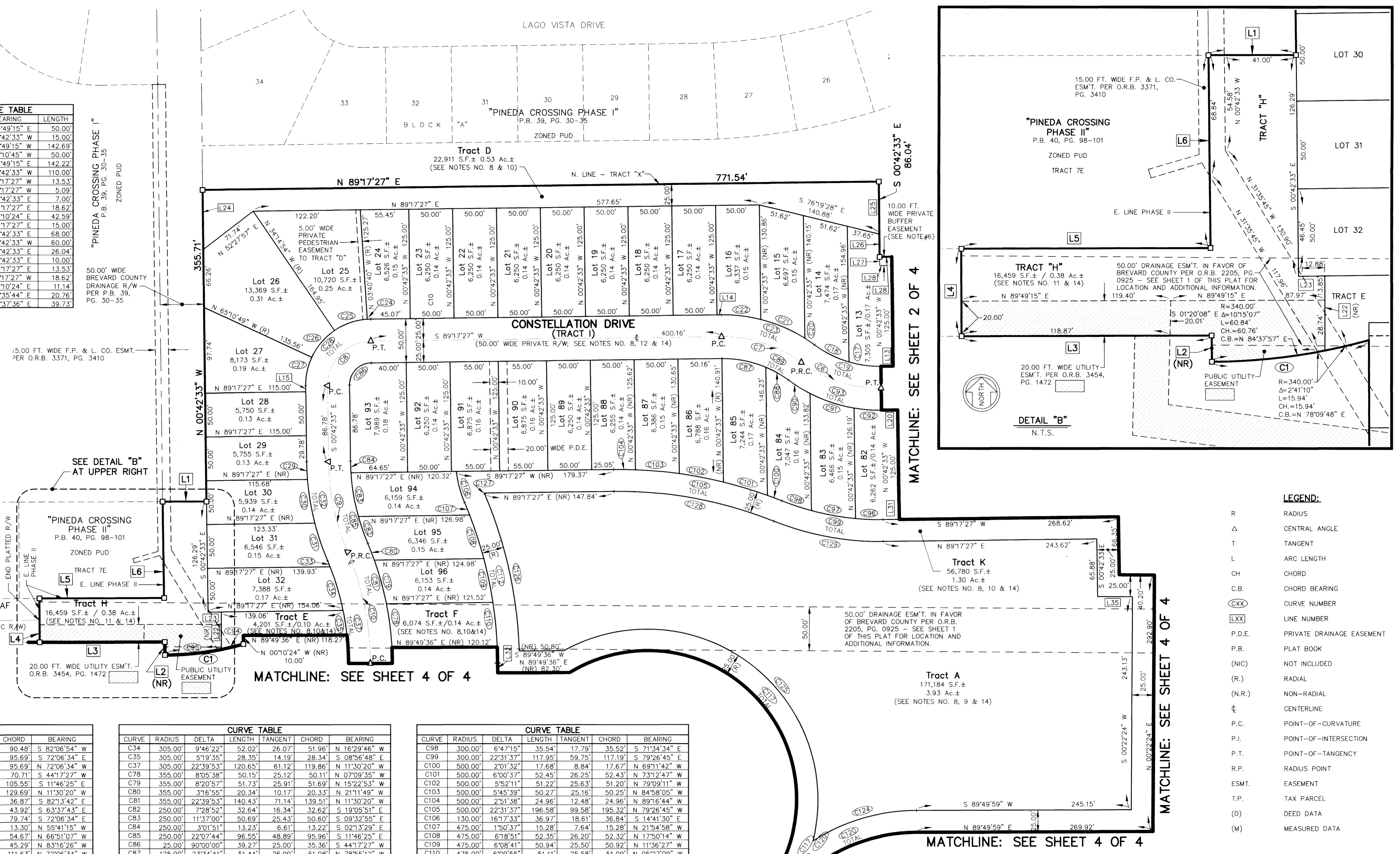
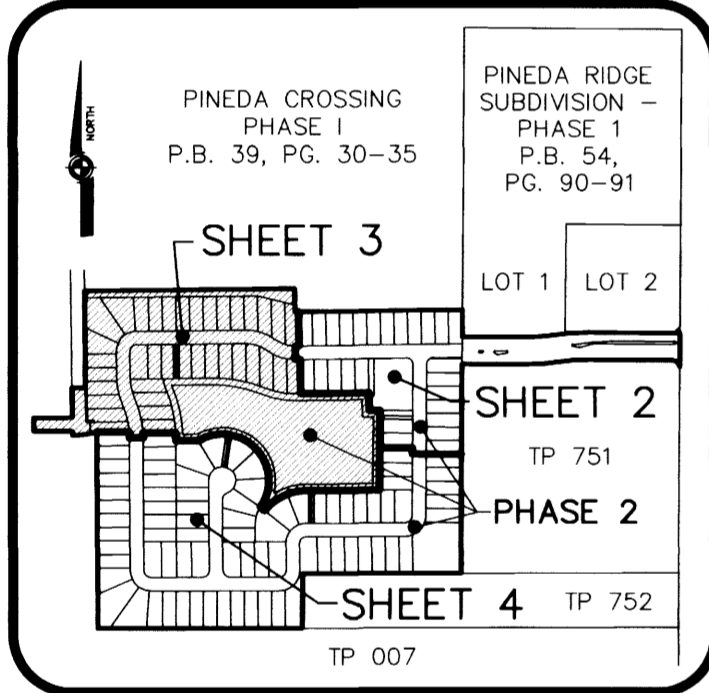


PINEDA RIDGE SUBDIVISION-PHASE 2

A SUBDIVISION LYING IN SECTION 25, TOWNSHIP 26 SOUTH, RANGE 36 EAST
CITY OF MELBOURNE, BREVARD COUNTY, FLORIDA, PORTIONS THEREOF BEING A PARTIAL REPLAT OF TRACT
"X" OF THE PLAT OF "PINEDA CROSSING PHASE I" RECORDED IN PLAT BOOK 39, PAGES 30 THROUGH 35



LINE	BEARING	LENGTH
L1	N 89°49'15" E	50.00'
L2	N 00°42'33" W	15.00'
L3	S 89°49'15" W	142.69'
L4	N 00°10'45" W	50.00'
L5	N 89°49'15" E	142.22'
L6	N 00°42'33" W	110.00'
L13	S 89°17'27" W	13.53'
L14	S 89°17'27" W	5.09'
L15	S 00°42'33" E	7.00'
L20	N 89°17'27" E	18.62'
L22	S 00°10'24" E	42.59'
L23	N 89°17'27" E	15.00'
L24	S 00°42'33" E	68.00'
L25	N 00°42'33" W	60.00'
L26	S 00°42'33" E	26.04'
L27	S 00°42'33" E	10.00'
L28	N 89°17'27" E	13.53'
L31	S 89°17'27" W	18.62'
L32	S 00°10'24" E	11.14'
L33	S 51°35'44" E	20.76'
L35	S 89°37'36" E	39.73'



CURVE	RADIUS	DELTA	LENGTH	TANGENT	CHORD	BEARING
C1	340.00'	15°17'31"	90.74'	45.64'	90.48'	S 82°06'54" W
C6	150.00'	37°11'59"	97.39'	50.48'	95.69'	S 72°06'34" E
C7	150.00'	37°11'59"	97.39'	50.48'	95.69'	N 72°06'34" W
C8	50.00'	90°00'00"	78.54'	70.71'	S 44°17'27" W	
C9	275.00'	22°07'44"	106.21'	53.78'	105.55'	S 11°46'25" E
C10	330.00'	22°39'53"	130.54'	66.13'	129.89'	N 11°30'20" W
C17	125.00'	16°57'42"	37.00'	18.64'	36.87'	S 82°13'42" E
C18	125.00'	20°14'17"	44.15'	22.31'	43.92'	S 63°37'43" E
C19	125.00'	37°11'59"	81.16'	42.07'	79.74'	S 72°06'34" E
C20	175.00'	4°21'20"	13.30'	6.66'	13.30'	N 55°41'15" W
C21	175.00'	17°58'24"	54.90'	27.68'	54.67'	N 66°51'07" W
C22	175.00'	14°52'15"	45.42'	22.84'	45.29'	N 83°16'26" W
C23	175.00'	37°11'59"	113.62'	58.89'	111.63'	N 72°06'34" W
C24	75.00'	2°58'07"	3.89'	1.94'	3.89'	S 87°48'23" W
C25	75.00'	30°34'14"	40.02'	20.50'	39.54'	S 71°02'13" W
C26	75.00'	30°55'55"	40.49'	20.75'	40.00'	S 40°17'09" W
C27	75.00'	25°31'44"	33.42'	16.99'	33.14'	S 12°03'19" W
C28	75.00'	90°00'00"	117.81'	75.00'	106.07'	S 44°17'27" W
C29	300.00'	3°51'53"	20.24'	10.12'	20.23'	S 02°38'30" E
C30	300.00'	9°40'19"	50.64'	25.38'	50.58'	S 09°24'36" E
C31	300.00'	8°35'31"	44.99'	22.54'	44.95'	S 18°32'31" E
C32	300.00'	22°07'44"	115.87'	58.66'	115.15'	S 11°46'25" E
C33	305.00'	1°27'20"	7.75'	3.87'	7.75'	N 22°06'37" W

CURVE	RADIUS	DELTA	LENGTH	TANGENT	CHORD	BEARING
C34	305.00'	9°46'22"	52.02'	26.07'	51.96'	N 16°29'46" W
C35	305.00'	5°19'35"	28.35'	14.19'	28.34'	S 08°56'48" E
C37	305.00'	22°39'53"	120.65'	61.12'	119.86'	N 11°30'20" W
C78	355.00'	8°05'38"	50.15'	25.12'	50.11'	N 07°09'35" W
C79	355.00'	8°20'57"	51.73'	25.91'	51.69'	N 15°22'53" W
C80	355.00'	3°16'55"	20.34'	10.17'	20.33'	N 21°11'49" W
C81	355.00'	22°39'53"	140.43'	71.14'	139.51'	N 11°30'20" W
C82	250.00'	7°28'52"	32.64'	16.34'	32.62'	S 19°05'51" E
C83	250.00'	11°37'00"	50.69'	25.43'	50.60'	S 09°32'55" E
C84	250.00'	3°01'51"	13.23'	6.61'	13.22'	S 02°13'29" E
C85	250.00'	22°07'44"	96.55'	48.89'	95.96'	S 11°46'25" E
C86	25.00'	90°00'00"	39.27'	25.00'	35.36'	S 44°17'27" W
C87	125.00'	23°34'41"	51.44'	26.09'	51.08'	N 75°55'12" W
C88	125.00'	13°32'17"	29.72'	14.93'	29.65'	N 80°19'13" W
C89	125.00'	37°11'59"	81.16'	42.07'	79.74'	N 72°06'34" W
C90	175.00'	9°29'18"	28.98'	14.52'	28.95'	S 58°15'13" E
C91	175.00'	17°22'56"	53.09'	26.75'	52.89'	S 19°05'51" E
C92	175.00'	10°19'45"	31.55'	15.82'	31.51'	S 85°32'41" E
C93	175.00'	37°11'59"	113.62'	58.89'	111.63'	S 72°06'34" E
C94	340.00'	4°20'50"	25.80'	12.90'	25.79'	N 76°38'25" E
C95	340.00'	10°56'41"	64.95'	32.57'	64.85'	N 84°17'10" E
C96	300.00'	6°00'14"	31.44'	15.73'	31.42'	S 87°42'26" E
C97	300.00'	9°44'08"	50.98'	25.55'	50.91'	S 79°50'16" E

CURVE	RADIUS	DELTA	LENGTH	TANGENT	CHORD	BEARING
C98	300.00'	6°47'15"	35.54'	17.79'	35.52'	S 71°34'34" E
C99	300.00'	22°31'37"	117.95'	59.75'	117.19'	S 79°26'45" E
C100	500.00'	2°01'32"	17.68'	8.84'	17.67'	N 69°11'42" W
C101	500.00'	6°00'37"	52.45'	26.25'	52.43'	N 73°12'47" W
C102	500.00'	5°52'11"	51.22'	25.63'	51.20'	N 79°09'11" W
C103	500.00'	5°45'39"	50.27'	25.16'	50.25'	N 84°58'05" W
C104	500.00'	2°51'38"	24.96'	12.48'	24.96'	N 89°16'44" W
C105	500.00'	22°31'37"	196.58'	99.58'	195.32'	N 79°26'45" W
C106	130.00'	16°17'33"	36.97'	18.61'	36.84'	S 14°41'30" E
C107	475.00'	1°50'37"	15.28'	7.64'	15.28'	N 21°54'58" W
C108	475.00'	6°18'51"	52.35'	26.20'	52.32'	N 17°50'14" W
C109	475.00'	6°08'41"	50.94'	25.50'	50.92'	N 11°36'27" W
C110	475.00'	6°09'55"	51.11'	25.58'	51.09'	N 05°27'09" W
C112	475.00'	22°39'53"	187.90'	95.19'	186.67'	N 11°30'20" W
C117	170.00'	156°29'18"	464.31'	816.88'	332.87'	N 42°59'11" W
C120	195.00'	51°25'42"	175.03'	93.91'	169.21'	S 64°07'08" W
C124	220.00'	32°27'31"	124.63'	64.04'	122.97'	S 73°36'13" W
C125	195.00'	133°02'06"	452.77'	448.84'	357.70'	N 52°36'26" W
C126	500.00'	21°04'34"	183.92'	93.01'	182.89'	N 12°18'00" W
C127	105.00'	0°47'00"	1.44'	0.72'	1.44'	S 22°26'47" E
C128	475.00'	22°31'37"	186.75'	94.60'	185.55'	N 79°26'45" W
C129	325.00'	22°31'37"	127.78'	64.73'	126.96'	S 79°26'45" E

MATCHLINE: SEE SHEET 2 OF 4

MATCHLINE: SEE SHEET 4 OF 4

MATCHLINE: SEE SHEET 4 OF 4

NOTE: TRACT "I" CONTAINS A TOTAL OF 219,913 S.F.± / 5.05 AC.± (SEE NOTES NO. 8, 12 & 14)



Melbourne Subdivision No. SD-2004-09b
Bussen-Mayer Engineering Group
100 PARNELL STREET • MERRITT ISLAND, FLORIDA 32953
PH. NO.: (321) 453-0010