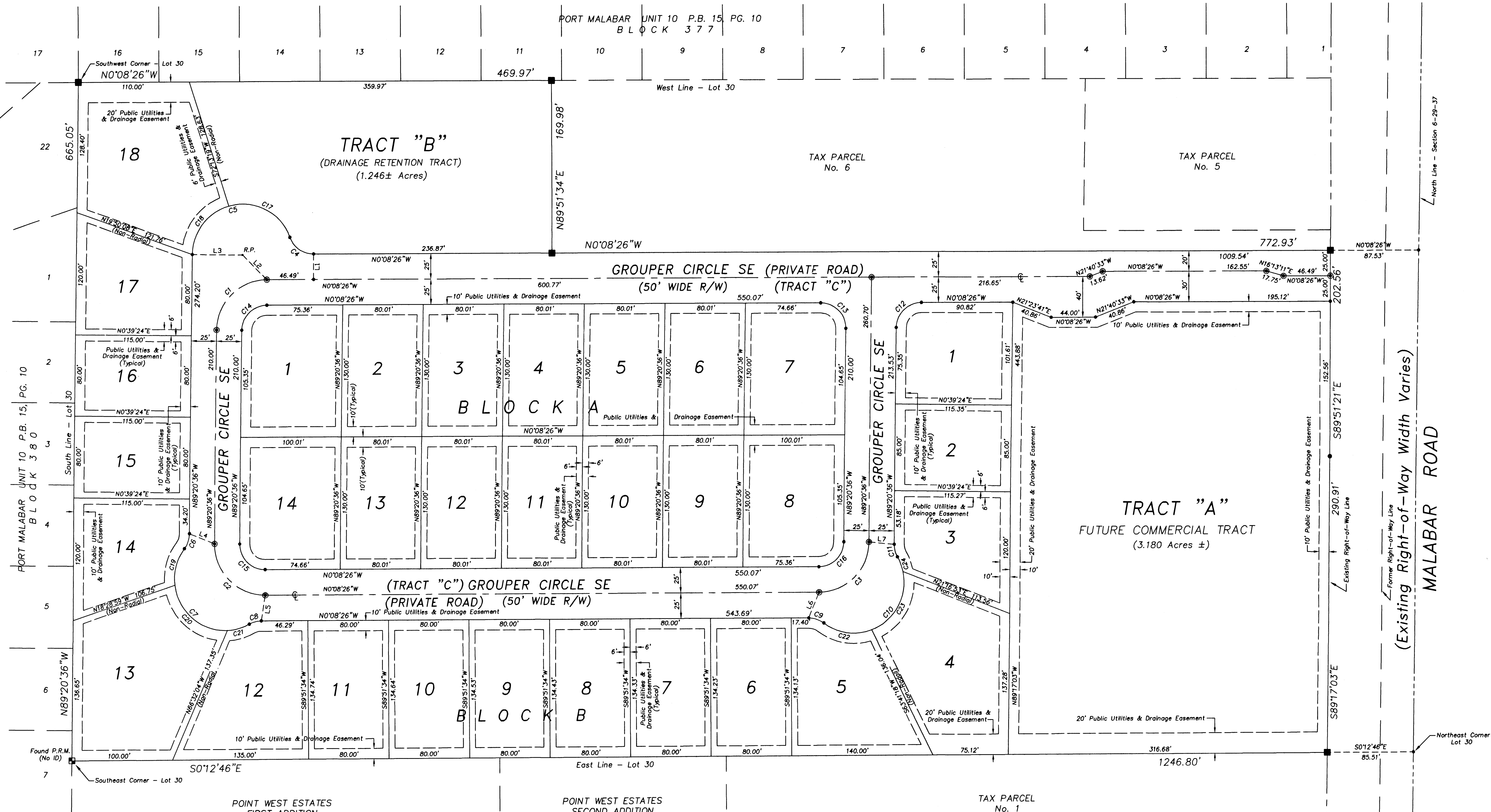


CORAL KEY

A RE-PLAT OF PART OF LOT 30, LYING IN SECTION 6, TOWNSHIP 29 SOUTH, RANGE 37 EAST, FLORIDA INDIAN RIVER LAND COMPANY SUBDIVISION, AS RECORDED IN PLAT BOOK 1, PAGE 165 SITUATED IN THE CITY OF PALM BAY, BREVARD COUNTY, FLORIDA

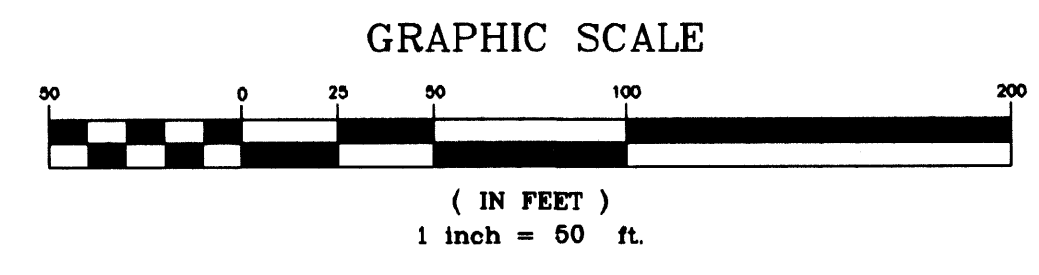


- LEGEND**
- = PERMANENT REFERENCE MONUMENT (P.R.M.)
 4" x 4" CONCRETE MONUMENT SET - STAMPED (LB 6609)
 - = PERMANENT CONTROL POINT (LB 6609) - TO BE SET UPON COMPLETION OF ROAD CONSTRUCTION
 - = A GRAPHIC REPRESENTATION OF A SPECIFIC LOCATION POINT
 - O.R.B. = OFFICIAL RECORDS BOOK
 - PG. = PAGE
 - C = CENTERLINE
 - R = RADIUS
 - Δ = CENTRAL ANGLE
 - A = ARC
 - C.B. = CHORD BEARING
 - R/W = RIGHT-OF-WAY
 - P.C. = POINT OF CURVATURE
 - P.T. = POINT OF TANGENCY
 - P.C.C. = POINT OF COMPOUND CURVATURE
 - P.B. = PLAT BOOK
 - ID. = IDENTIFICATION

POINT WEST ESTATES
 FIRST ADDITION
 P.B. 25, PG. 60

POINT WEST ESTATES
 SECOND ADDITION
 P.B. 25, PG. 168

CURVE TABLE											
CURVE	RADIUS	DELTA	ARC	CHORD BEARING	CHORD DISTANCE	CURVE	RADIUS	DELTA	ARC	CHORD BEARING	CHORD DISTANCE
C1	50.00'	89°12'10"	77.84'	N44°44'31"W	70.22'	C13	25.00'	90°47'50"	39.62'	S45°15'29"W	35.60'
C2	50.00'	90°47'50"	79.24'	S45°15'29"W	71.20'	C14	25.00'	89°12'10"	38.92'	N44°44'31"W	35.11'
C3	50.00'	89°12'10"	77.84'	N44°44'31"W	70.22'	C15	25.00'	90°47'50"	39.62'	S45°15'29"W	35.60'
C4	25.00'	69°57'51"	30.53'	N34°50'29"W	28.67'	C16	25.00'	89°12'10"	38.92'	N44°44'31"W	35.11'
C5	50.00'	159°10'01"	138.90'	N9°45'36"W	98.35'	C17	50.00'	85°49'42"	74.90'	N26°54'34"E	68.09'
C6	25.00'	36°18'28"	15.84'	N71°11'22"W	15.58'	C18	50.00'	73°20'19"	64.00'	N52°40'26"W	59.72'
C7	50.00'	155°37'14"	135.80'	N49°09'15"E	97.75'	C19	50.00'	43°38'57"	38.09'	N74°51'36"W	37.18'
C8	25.00'	28°30'56"	12.44'	N14°23'54"W	12.31'	C20	50.00'	85°51'41"	74.93'	S40°23'05"W	68.11'
C9	25.00'	36°55'25"	16.11'	N18°19'16"E	15.83'	C21	50.00'	26°06'36"	22.79'	N15°36'04"W	22.59'
C10	50.00'	156°03'10"	136.18'	N41°14'36"W	97.82'	C22	50.00'	57°28'08"	50.15'	N82°55'E	48.08'
C11	25.00'	29°55'35"	13.06'	S79°41'36"W	12.91'	C23	50.00'	80°53'51"	70.60'	N61°08'04"W	64.88'
C12	25.00'	89°12'10"	38.92'	N44°44'31"W	35.11'	C24	50.00'	174°11'	15.43'	S69°34'25"W	15.37'



LINE TABLE		
LINE	LENGTH	BEARING
L1	250.0'	N89°51'34"E
L2	34.13'	S45°15'29"W
L3	50.00'	S00°39'24"W
L4	26.84'	S21°59'36"W
L5	25.36'	S80°31'32"E
L6	27.16'	S67°08'39"E
L7	25.09'	N65°33'18"E

PREPARED BY: **CP**
CANTELLOU & POWELL, INC.
 ENGINEERING • SURVEYING • PLANNING
 1400 SARRO ROAD MELBOURNE, FLORIDA 32935
 (321) 259-1525 L.B. NO. 6609 Fax (321)-259-4165