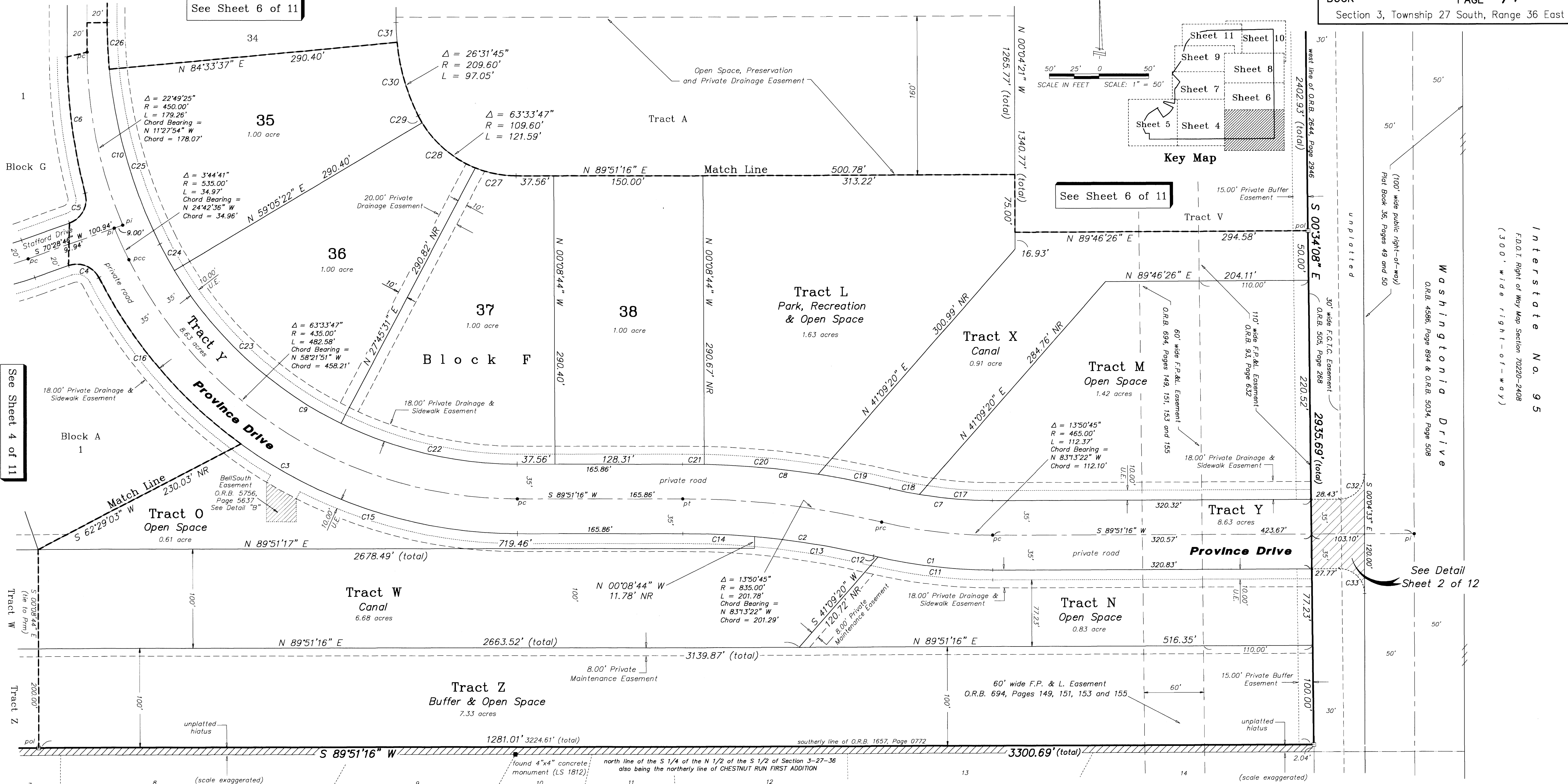


See Sheet 6 of 11



See Sheet 4 of 11

See Sheet 6 of 11

See Detail Sheet 2 of 12

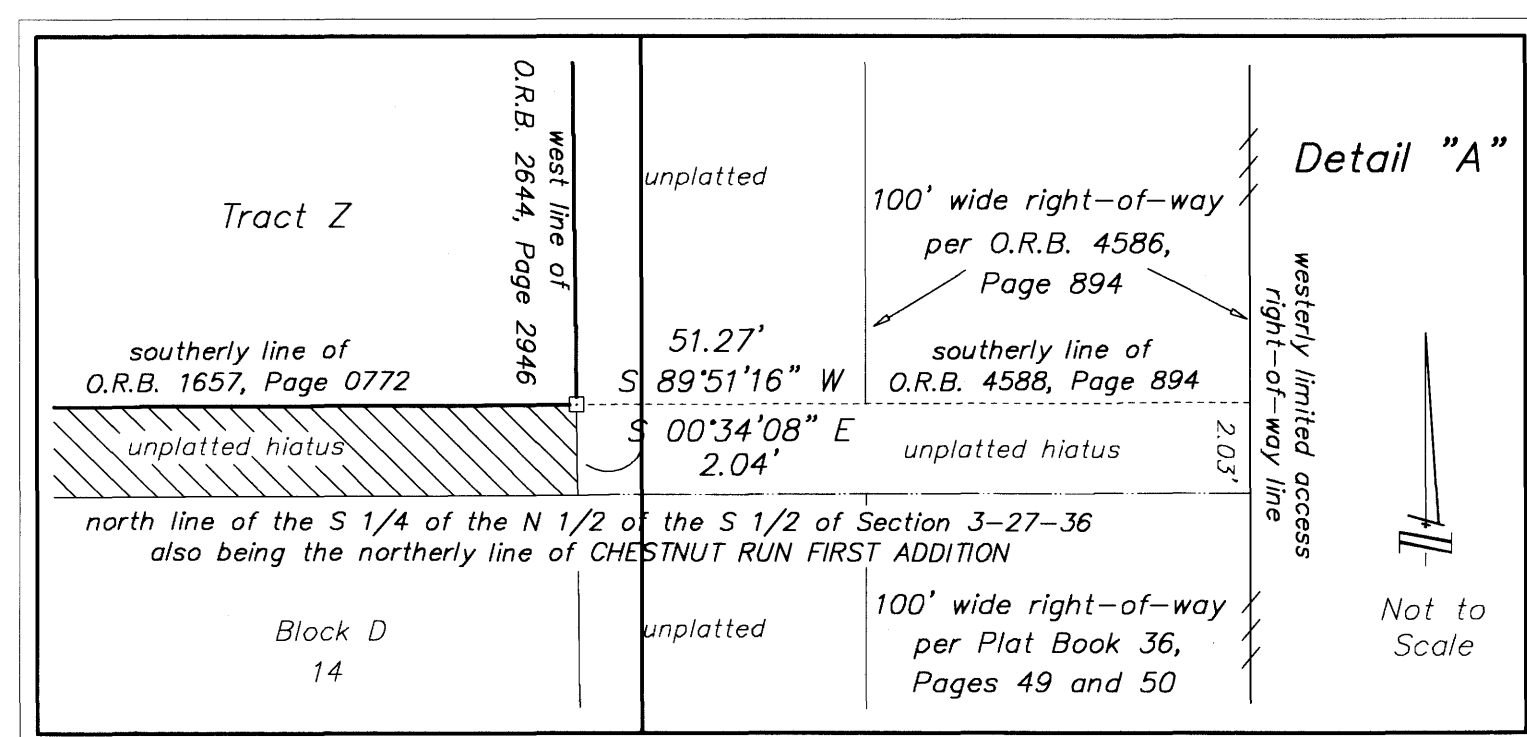
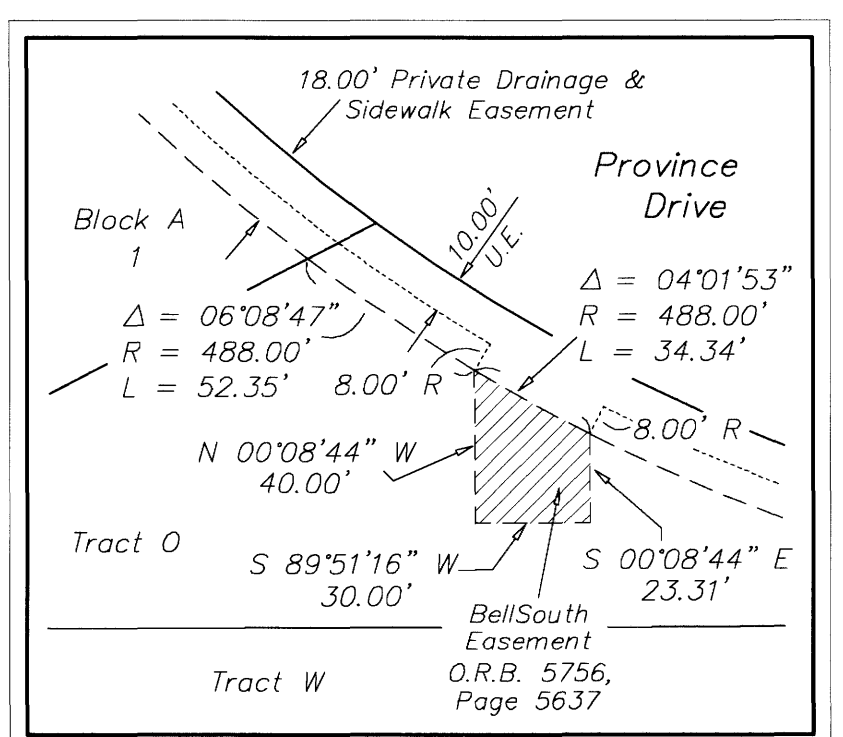
- Abbreviations**
- L - arc length
 - Δ - central angle
 - R - radius or radial
 - NR - non-radial
 - ± - more or less
 - CL - centerline
 - pol - point on line
 - pt - point of tangency
 - pc - point of curvature
 - pi - point of intersection
 - cm - concrete monument
 - U.E. - Public Utility Easement
 - LS - Licensed Surveyor
 - LB - Licensed Business
 - CGR - Certified Corner Record
 - O.R.B. - Official Records Book
 - F.P. & L. - Florida Power & Light
 - F.D.O.T. - Florida Department of Transportation
 - F.G.T.C. - Florida Gas Transmission Company
 - SPC - State Plane Coordinate
- Legend**
- indicates permanent control point (PCP)
 - set nail and disc stamped (PCP LB 7194) unless otherwise shown.
 - indicates permanent reference monument (PRM)
 - set 4"x4" concrete monument stamped (PRM LB 7194)

CURVE TABLE

CURVE	DELTA	RADIUS	LENGTH	CHORD BEARING	CHORD
C1	13°50'45"	500.00'	120.83'	S 83°13'22" E	120.53'
C2	13°50'45"	800.00'	193.32'	N 83°13'22" W	192.85'
C3	6°31'40"	470.00'	518.73'	S 58°31'40" E	492.80'
C4	82°36'39"	25.00'	36.05'	N 68°12'55" W	33.00'
C5	85°02'52"	25.00'	37.11'	N 27°57'20" E	33.79'
C6	14°30'54"	550.00'	139.33'	S 07°18'39" E	138.96'
C7	13°50'45"	430.00'	103.91'	S 83°13'22" E	103.66'
C8	13°50'45"	870.00'	210.24'	N 83°13'22" W	209.73'
C9	6°33'47"	400.00'	443.75'	S 58°21'51" E	421.35'
C10	26°31'45"	500.00'	231.51'	S 13°19'04" E	229.45'
C11	13°19'43"	500.00'	116.31'	S 83°28'53" E	116.05'
C12	0°31'02"	500.00'	4.51'	S 76°33'31" E	4.51'
C13	8°42'15"	800.00'	121.53'	N 80°39'07" W	121.41'
C14	5°08'30"	800.00'	71.79'	N 87°34'29" W	71.77'
C15	36°12'20"	470.00'	297.00'	S 72°02'34" E	292.08'
C16	27°01'49"	470.00'	221.73'	S 40°25'30" E	219.68'
C17	9°49'28"	430.00'	73.73'	S 85°14'00" E	73.64'

CURVE TABLE

CURVE	DELTA	RADIUS	LENGTH	CHORD BEARING	CHORD
C18	4°01'16"	430.00'	30.18'	S 78°18'38" E	30.17'
C19	4°50'31"	870.00'	73.52'	N 78°43'15" W	73.50'
C20	7°34'30"	870.00'	115.02'	N 84°55'45" W	114.94'
C21	1°25'44"	870.00'	21.70'	N 89°25'52" W	21.70'
C22	26°17'09"	400.00'	183.51'	S 77°00'09" E	181.91'
C23	32°56'57"	400.00'	230.03'	S 47°23'06" E	226.87'
C24	4°19'41"	400.00'	30.22'	S 28°44'47" E	30.21'
C25	21°08'34"	500.00'	184.51'	S 16°00'40" E	183.46'
C26	5°23'11"	500.00'	47.00'	S 02°44'47" E	46.99'
C27	21°59'19"	109.60'	42.06'	S 79°09'04" E	41.80'
C28	37°14'47"	109.60'	71.25'	S 49°32'01" E	70.00'
C29	4°19'41"	109.60'	8.28'	S 28°44'47" E	8.28'
C30	21°08'34"	209.60'	77.35'	S 16°00'40" E	76.91'
C31	5°23'11"	209.60'	19.70'	S 02°44'47" E	19.70'
C32	89°55'49"	25.00'	39.24'	N 44°53'22" E	35.33'
C33	90°04'11"	25.00'	39.30'	N 45°06'38" W	35.38'



WOODSHIRE PRESERVE - PHASE 1

lying in Section 3, Township 27 South, Range 36 East
City of Melbourne, Brevard County, Florida