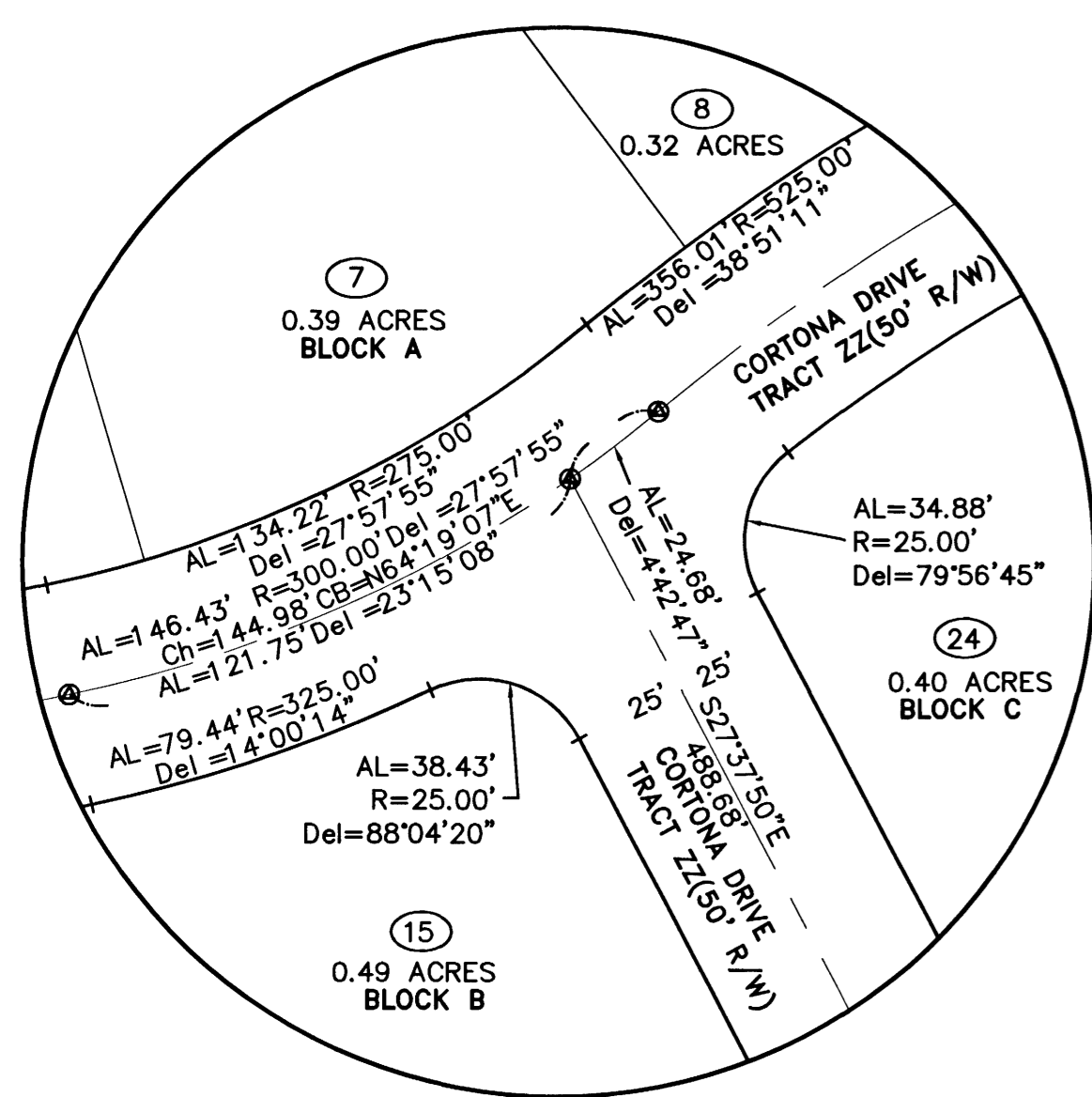
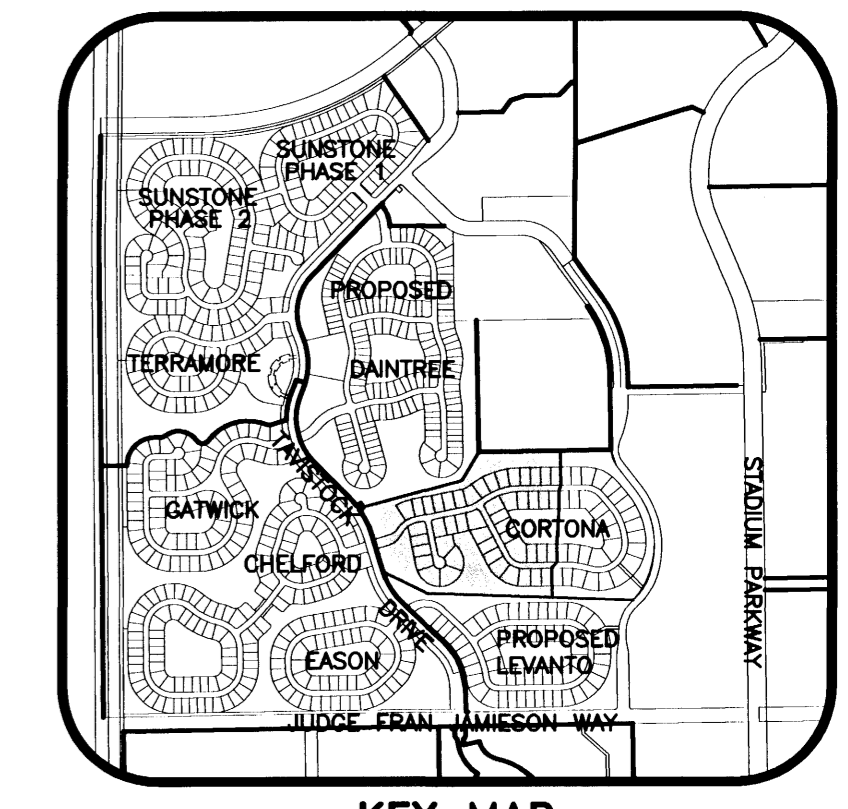


CORTONA SUBDIVISION

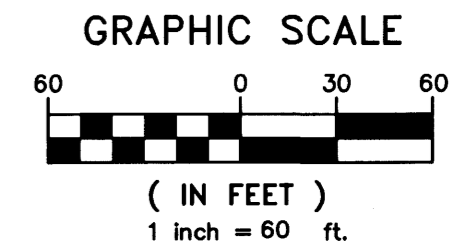
BEING A REPLAT OF TRACT EE, EASON LANDING SUBDIVISION AS PER PLAT BOOK 54, PAGE 79, AND ALSO BEING A PORTION OF PARCEL 4, VIERA CENTRAL PUD, LYING AND BEING IN SECTION 5, TOWNSHIP 26 SOUTH, RANGE 36 EAST, BREVARD COUNTY, FLORIDA



DETAIL D
 SCALE: 1" = 40'



KEY MAP
 N.T.S.



LEGEND

- SECTION CORNER (MARKED AS NOTED)
- PERMANENT CONTROL POINT SET (METAL MARKER WITH A METAL DISK STAMPED "PCP-LB 4905") (UNLESS OTHERWISE NOTED)
- PERMANENT REFERENCE MONUMENT SET (4"x4" CONCRETE MARKER WITH METAL DISK STAMPED "PRM LB 4905") (UNLESS OTHERWISE NOTED)
- PERMANENT REFERENCE MONUMENT FOUND (4"x4" CONCRETE MARKER WITH METAL DISK STAMPED "PRM LB 4905") (UNLESS OTHERWISE NOTED)
- CONCRETE MONUMENT SET (4"x4" CONCRETE MARKER STAMPED "LB 4905") (UNLESS OTHERWISE NOTED)
- CONCRETE MONUMENT FOUND (4"x4" CONCRETE MARKER STAMPED "LB 4905") (UNLESS OTHERWISE NOTED)
- 1/2" IRON ROD & CAP SET (STAMPED "LB 4905") (UNLESS OTHERWISE NOTED)
- 1/2" IRON ROD & CAP FOUND (STAMPED "LB 4905") (UNLESS OTHERWISE NOTED)

ABBREVIATION

- N = NORTH
- S = SOUTH
- E = EAST
- W = WEST
- R/W = RIGHT-OF-WAY
- O.R.B. = OFFICIAL RECORD BOOK
- P.O.C. = POINT OF COMMENCEMENT
- P.O.B. = POINT OF BEGINNING
- AL = ARC LENGTH OF CURVE
- R = RADIUS OF CURVE
- Del = CENTRAL ANGLE OF CURVE
- P.D.E. = PRIVATE DRAINAGE EASEMENT
- Ch = CHORD LENGTH OF CURVE
- CB = CHORD BEARING OF CURVE
- RB = RADIAL BEARING
- (NR) = NON RADIAL LINE
- PC = POINT OF CURVATURE
- PT = POINT OF TANGENCY
- PRC = POINT OF REVERSE CURVE
- D.E. = DRAINAGE EASEMENT
- P.U.&D.E. = PUBLIC UTILITY & DRAINAGE EASEMENT
- W.&M.E. = WALL & MAINTENANCE EASEMENT
- P.C.C. = POINT OF COMPOUND CURVE
- W.E. = WALL EASEMENT

THIS PLAT PREPARED BY
 LESLIE E. HOWARD PROFESSIONAL SURVEYOR AND MAPPER
 FLORIDA LICENSE NO. 5611
 B.S.E. CONSULTANTS, INC. LB No. 4905

B.S.E. CONSULTANTS, INC.
 CONSULTING - ENGINEERING - LAND SURVEYING
 312 SOUTH HARBOR CITY BOULEVARD, SUITE 4
 MELBOURNE, FLORIDA PHONE: (321) 725-3674 FAX: (321) 723-1159
 CERTIFICATE OF BUSINESS AUTHORIZATION: 4805
 CERTIFICATE OF LAND SURVEYING BUSINESS AUTHORIZATION: LB0004905

7/25/06
 10869309

NOTICE: THIS PLAT, AS RECORDED IN ITS GRAPHIC FORM, IS THE OFFICIAL DEPICTION OF THE SUBDIVIDED LANDS DESCRIBED HEREIN AND WILL IN NO CIRCUMSTANCES BE SUPPLANTED IN AUTHORITY BY ANY OTHER GRAPHIC OR DIGITAL FORM OF THE PLAT. THERE MAY BE ADDITIONAL RESTRICTIONS THAT ARE NOT RECORDED ON THIS PLAT THAT MAY BE FOUND IN THE PUBLIC RECORDS OF THIS COUNTY.