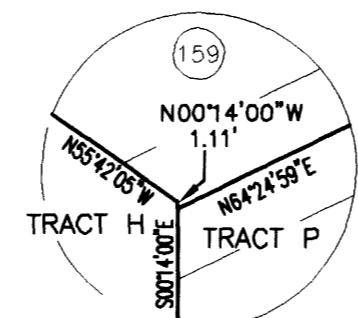
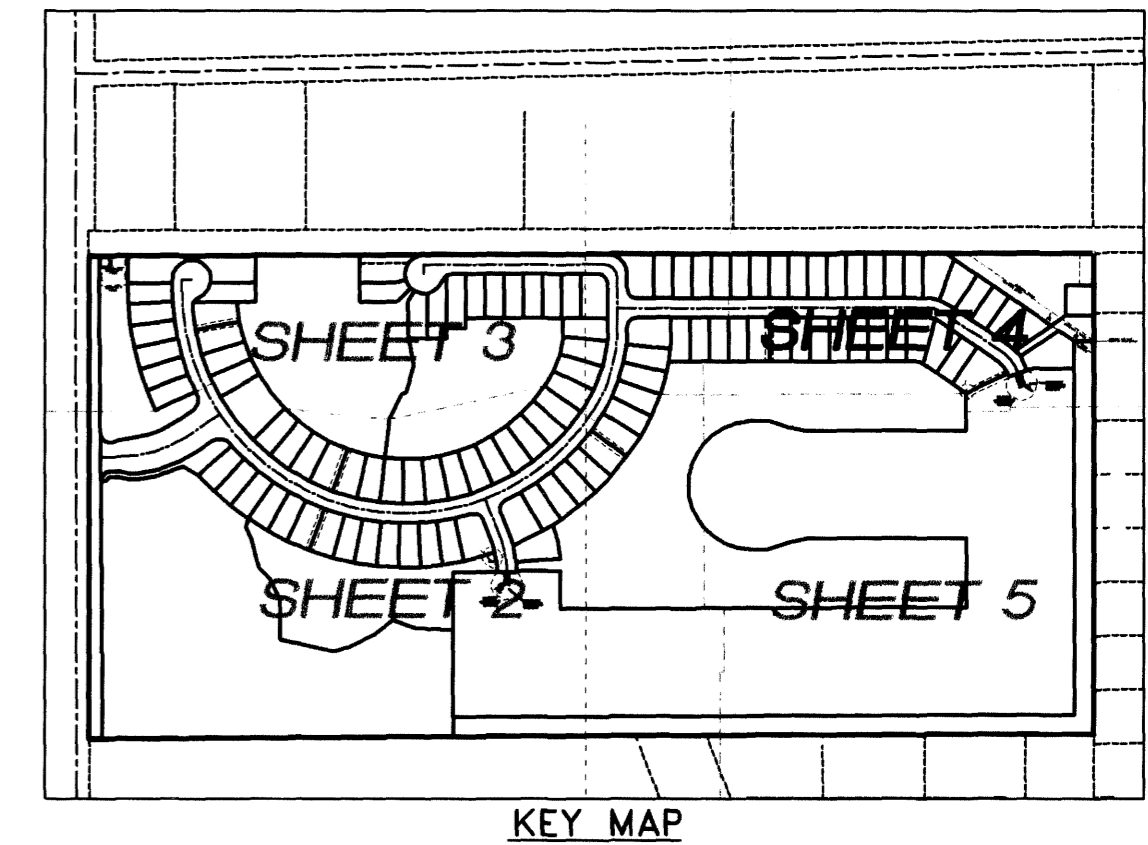


HAMMOCK TRACE PRESERVE - PHASE ONE

A REPLAT OF LOTS 23 THRU 26, SUBURBS OF EAU GALLIE, PLAT BOOK 1, PAGE 46,
LYING IN SECTION 26, TOWNSHIP 27 SOUTH, RANGE 36 EAST,
CITY OF MELBOURNE, BREVARD COUNTY, FLORIDA

PLAT BOOK 56 PAGE 79

SHEET 4 OF 5
SECTION 26 TWP. 27 S., RANGE 36 E.



DETAIL
"B"
NOT TO SCALE

CURVE	RADIUS	LENGTH	CENTRAL ANGLE	CHORD	CHORD BEARING
C30	125.00'	20.10'	9°12'51"	20.08'	N40°20'03"W
C52	100.00'	60.23'	34°30'40"	59.33'	N72°57'25"W
C133	125.00'	42.35'	19°24'50"	42.15'	N80°30'20"W
C134	125.00'	32.94'	15°05'50"	32.84'	N63°15'00"W
C135	75.00'	13.85'	10°34'51"	13.83'	N60°59'30"W
C136	125.00'	23.47'	10°45'36"	23.44'	N50°19'16"W
C137	125.00'	40.17'	18°24'50"	40.00'	N26°31'12"W
C205	75.00'	31.32'	23°55'49"	31.10'	N78°14'50"W
C206	75.00'	42.31'	32°19'13"	41.75'	N39°32'28"W
C230	100.00'	67.00'	38°23'17"	65.75'	N36°30'26"W
C231	75.00'	7.94'	6°04'04"	7.94'	N20°20'49"W

LINE	LENGTH	BEARING
L13	13.42'	S55°42'05"E
L23	21.61'	S72°41'13"W
L37	11.92'	S55°42'05"E
L38	19.57'	S55°42'05"E
L39	0.53'	N89°47'15"E
L45	1.11'	N00°14'00"W
L69	52.17'	S89°53'39"W

- LEGEND
- 4"x4" CONCRETE MONUMENT SET - STAMPED "POWSHOK PRM No. 5383"
 - NAIL AND DISK SET - STAMPED "POWSHOK PCP No. 5383"
 - R/W RIGHT-OF-WAY
 - ORB OFFICIAL RECORDS BOOK
 - D.E. DRAINAGE EASEMENT
 - P.U.E. PUBLIC UTILITY EASEMENT
 - Δ CURVE DELTA
 - R CURVE RADIUS
 - L CURVE LENGTH
 - NR NON-RADIAL
 - LB LICENSED BUSINESS
 - ⊙ CENTERLINE

GRAPHIC SCALE



(IN FEET)
1 inch = 60 ft.

PLAT PREPARED BY -
AAL LAND SURVEYING SERVICES, INC.
1103 W. HIBISCUS BLVD., SUITE 403
WEST MELBOURNE, FLORIDA 32904
(321) 768-8110

PROJECT # 11343-PLAT-PHASE 1
DATED 4/03/07

MATCH LINE - SEE SHEET 3 OF 5

UNPLATTED

CRANE CREEK DRAINAGE DISTRICT MAIN CANAL M-1
N89°47'15" E 1319.21'

POINT OF BEGINNING

INDUSTRIAL PLAZA UNIT ONE
(PLAT BOOK 26, PAGE 103)

WEST DRIVE
(66' R/W)

ARIA DRIVE

MATCH LINE - SEE SHEET 5 OF 5

1251.14'
S00°06'21"E

