

HAMMOCK TRACE PRESERVE - PHASE ONE

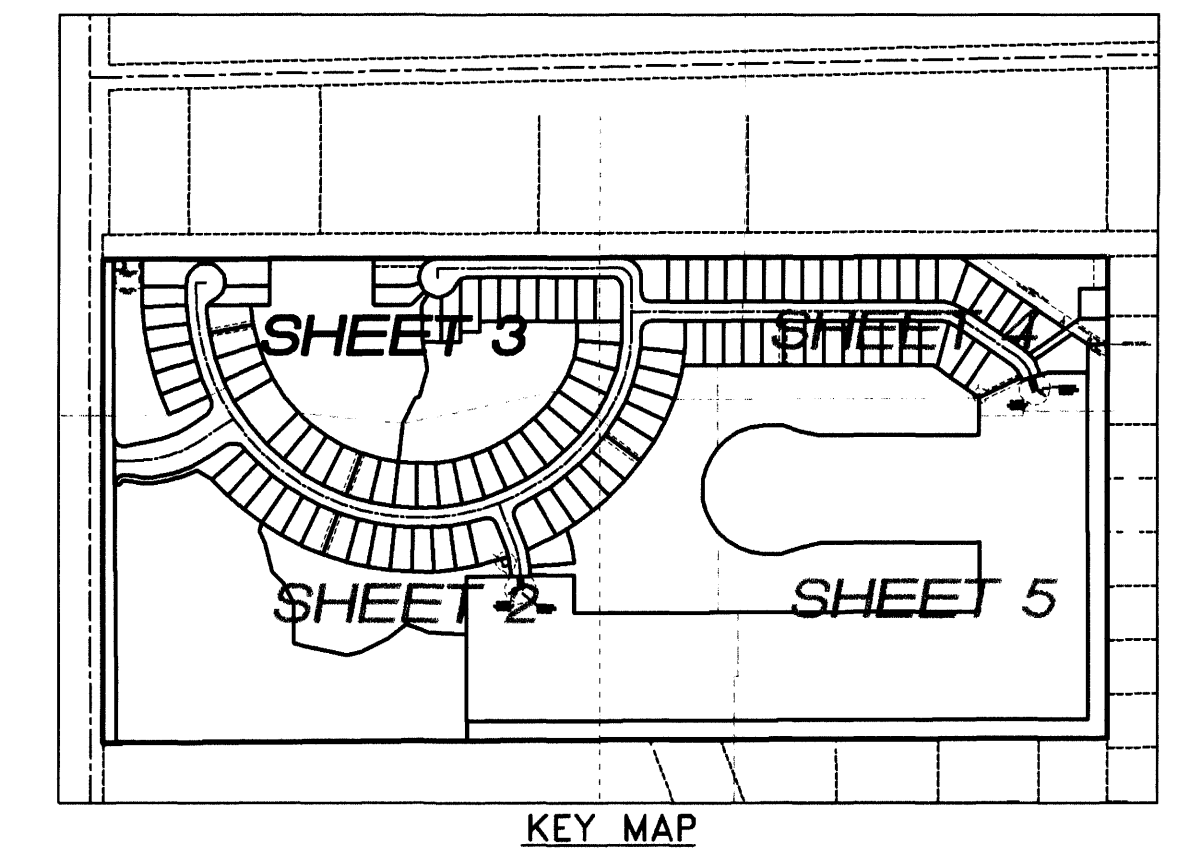
A REPLAT OF LOTS 23 THRU 26, SUBURBS OF EAU GALLIE, PLAT BOOK 1, PAGE 46,
LYING IN SECTION 26, TOWNSHIP 27 SOUTH, RANGE 36 EAST,
CITY OF MELBOURNE, BREVARD COUNTY, FLORIDA

PLAT BOOK 56 PAGE 78
SHEET 3 OF 5
SECTION 26 TWP. 27 S., RANGE 36 E.

JOHN RODES BLVD.
(66' R/W)

DOW ROAD

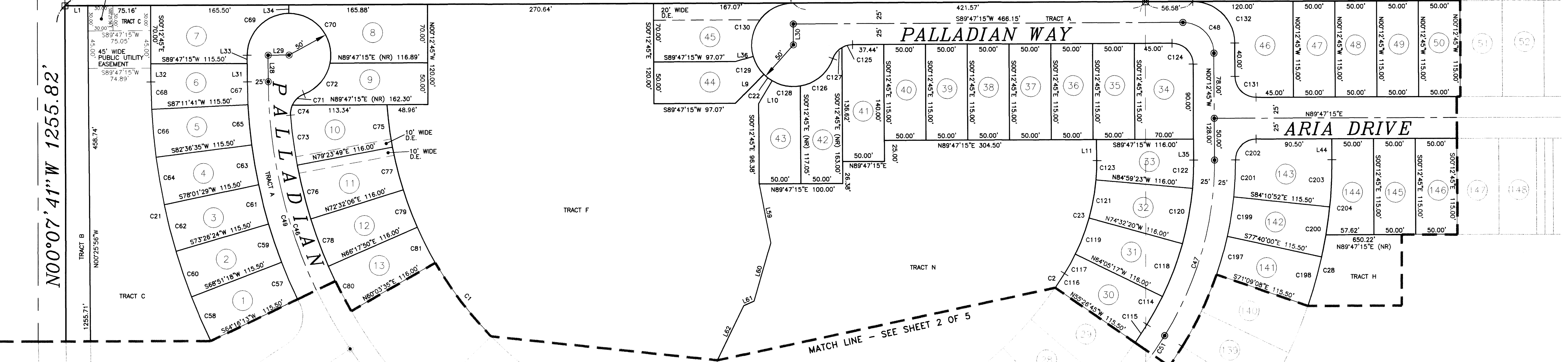
UNPLATTED



MATCH LINE - SEE SHEET 4 OF 5

CRANE CREEK DRAINAGE DISTRICT MAIN CANAL M-1
N89°47'15"E 1293.19'

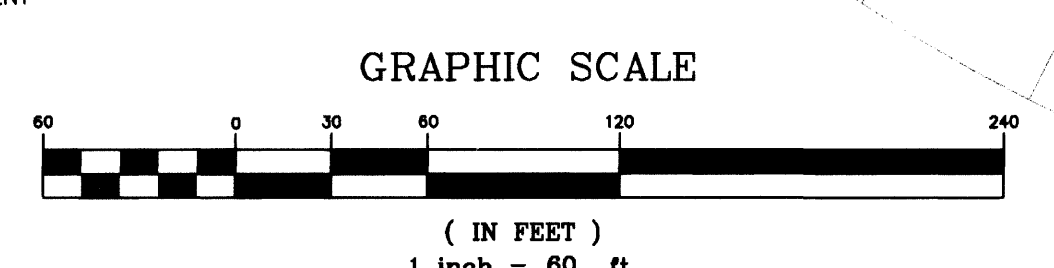
N89°47'15"E 1319.21'



LINE TABLE

LINE	LENGTH	BEARING
L1	27.37'	N89°47'15"E
L9	48.99'	S44°47'15"W
L10	31.55'	N30°39'33"E
L11	25.00'	N00°12'45"W
L28	31.72'	S00°12'45"E
L29	25.00'	S89°47'15"W
L30	25.00'	S00°12'45"E
L31	21.72'	S00°12'45"E
L32	21.72'	S00°12'45"E
L33	10.00'	S00°12'45"E
L34	10.00'	N00°12'45"W
L35	25.00'	N00°12'45"W
L36	22.80'	N73°50'32"E
L44	25.00'	N00°12'45"W
L59	72.91'	S18°04'12"W
L60	72.36'	S18°04'12"W
L61	13.35'	S86°03'09"W
L62	72.97'	S25°45'42"W

LEGEND
 4"x4" CONCRETE MONUMENT SET - STAMPED "POWSHOK PRM No. 5383"
 NAIL AND DISK SET - STAMPED "POWSHOK PCP No. 5383"
 R/W RIGHT-OF-WAY
 ORB OFFICIAL RECORDS BOOK
 D.E. DRAINAGE EASEMENT
 P.U.E. PUBLIC UTILITY EASEMENT
 Δ CURVE DELTA
 R CURVE RADIUS
 L CURVE LENGTH
 NR NON-RADIAL
 LB LICENSED BUSINESS
 C CENTERLINE



CURVE TABLE				CURVE TABLE				CURVE TABLE				CURVE TABLE					
CURVE	RADIUS	LENGTH	CENTRAL ANGLE	CHORD	CHORD BEARING	CURVE	RADIUS	LENGTH	CENTRAL ANGLE	CHORD	CHORD BEARING	CURVE	RADIUS	LENGTH	CENTRAL ANGLE	CHORD	CHORD BEARING
C1	439.00'	606.55'	79°09'49"	559.44'	N43°29'15"W	C65	605.00'	48.41'	4°35'06"	48.40'	S05°05'52"E	C116	439.00'	20.52'	2°40'40"	20.51'	N33°12'55"E
C2	439.00'	498.45'	65°03'15"	472.10'	S64°24'13"W	C66	720.50'	57.66'	4°35'06"	57.64'	S05°05'52"E	C117	254.00'	26.44'	5°57'52"	26.43'	N28°53'39"E
C21	720.50'	320.88'	25°31'02"	318.24'	S12°58'16"E	C67	605.00'	27.38'	2°35'34"	27.38'	S01°30'32"E	C118	370.00'	67.49'	10°27'03"	67.40'	N20°41'12"E
C22	50.00'	12.33'	14°07'42"	12.30'	S52°16'36"E	C68	720.50'	32.61'	2°35'34"	32.60'	S01°30'32"E	C119	254.00'	46.33'	10°27'03"	46.27'	N20°41'12"E
C23	254.00'	142.25'	32°05'20"	140.40'	N15°49'55"E	C69	50.00'	78.54'	90°00'00"	70.71'	S44°47'15"W	C120	370.00'	67.49'	10°27'03"	67.40'	N10°14'08"E
C28	535.50'	209.48'	22°24'48"	208.15'	N20°40'11"E	C70	50.00'	88.61'	101°32'13"	77.46'	N39°26'38"W	C121	254.00'	46.33'	10°27'03"	46.27'	N10°14'08"E
C46	580.00'	1497.29'	147°54'40"	1114.82'	S74°10'05"E	C71	25.00'	19.77'	45°18'39"	19.26'	S46°31'24"W	C122	370.00'	33.73'	5°13'22"	33.72'	N02°23'56"E
C47	395.00'	221.22'	32°05'20"	218.34'	N15°49'55"E	C72	50.00'	50.49'	57°51'16"	48.37'	N40°15'06"E	C123	254.00'	23.15'	5°13'22"	23.14'	N02°23'56"E
C48	37.00'	58.12'	90°00'00"	52.33'	N45°12'45"W	C73	555.00'	60.32'	6°13'37"	60.29'	S07°29'22"E	C124	25.00'	39.27'	90°00'00"	35.36'	N45°12'45"W
C49	580.00'	339.39'	33°31'38"	334.57'	S16°58'34"E	C74	25.00'	12.32'	28°14'38"	12.20'	S09°44'46"W	C125	25.00'	13.16'	30°09'11"	13.01'	S74°42'40"W
C51	580.00'	375.96'	37°08'23"	369.42'	N50°26'47"E	C75	439.00'	51.31'	6°41'50"	51.28'	S07°15'16"E	C126	50.00'	53.36'	61°08'40"	50.86'	N49°49'51"E
C57	605.00'	48.41'	4°35'06"	48.40'	S23°26'15"E	C76	555.00'	66.47'	6°51'44"	66.43'	S14°02'02"E	C127	25.00'	17.62'	40°22'33"	17.25'	S39°26'48"W
C58	720.50'	57.66'	4°35'06"	57.64'	S23°26'15"E	C77	439.00'	52.58'	6°51'44"	52.55'	S14°02'02"E	C128	50.00'	35.13'	40°15'22"	34.41'	S79°28'08"E
C59	605.00'	48.41'	4°35'06"	48.40'	S18°51'09"E	C78	555.00'	60.42'	6°14'16"	60.39'	S20°35'02"E	C129	50.00'	25.35'	29°03'17"	25.08'	S30°41'07"E
C60	720.50'	57.66'	4°35'06"	57.64'	S18°51'09"E	C79	439.00'	47.79'	6°14'16"	47.77'	S20°35'02"E	C130	50.00'	92.45'	105°56'43"	79.83'	S36°48'53"W
C61	605.00'	48.41'	4°35'06"	48.40'	S14°16'03"E	C80	555.00'	60.42'	6°14'16"	60.39'	S26°49'18"E	C131	25.00'	39.27'	90°00'00"	35.36'	S45°12'45"E
C62	720.50'	57.66'	4°35'06"	57.64'	S14°16'03"E	C81	439.00'	47.79'	6°14'16"	47.77'	S26°49'18"E	C132	50.00'	78.54'	90°00'00"	70.71'	N45°12'45"W
C63	605.00'	48.41'	4°35'06"	48.40'	S09°40'58"E	C114	370.00'	38.52'	5°57'52"	38.50'	N28°53'39"E	C187	420.00'	47.75'	6°30'52"	47.73'	N15°35'28"E
C64	720.50'	57.66'	4°35'06"	57.64'	S09°40'58"E	C115	555.00'	25.94'	2°40'40"	25.94'	N33°12'55"E	C198	535.50'	60.89'	6°30'52"	60.85'	N15°35'28"E

PLAT PREPARED BY -
AAL LAND SURVEYING SERVICES, INC.
1103 W. HIBISCUS BLVD., SUITE 403
WEST MELBOURNE, FLORIDA 32904
(321) 768-8110

PROJECT # 11343-PLAT-PHASE I
DATED 4/03/07