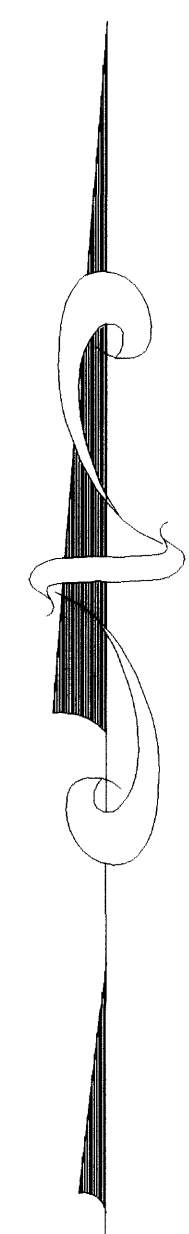


# HIDDEN HEIGHTS

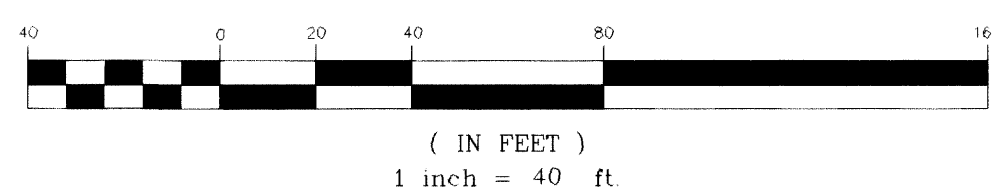
A REPLAT OF PORTIONS OF LOT 12, FLORIDA INDIAN RIVER LAND COMPANY SUBDIVISION, PLAT BOOK 1, PAGE 164 AND A REPLAT OF PORTIONS OF LOTS 8 AND 9, BLOCK 7, MELBOURNE ESTATES, ADDITION NO. 1, PLAT BOOK 10, PAGE 35 LYING IN SECTION 6, TOWNSHIP 28 SOUTH, RANGE 37 EAST, WEST MELBOURNE, BREVARD COUNTY, FLORIDA

CURVE	RADIUS	LENGTH	CENTRAL ANGLE	CHORD	CHORD BEARING
C9	75.00'	1.63'	1°14'46"	1.63'	N00°26'19"W
C10	50.00'	1.05'	1°12'10"	1.05'	N00°47'09"E
C11	50.00'	35.41'	40°34'41"	34.68'	N21°40'35"E
C12	50.00'	25.29'	28°59'07"	25.03'	N56°27'29"E
C13	50.00'	28.82'	33°01'44"	28.43'	N87°27'55"E
C14	50.00'	9.84'	11°16'29"	9.82'	S70°22'58"E
C15	50.00'	61.38'	70°20'09"	57.60'	S29°34'39"E
C16	50.00'	56.83'	65°07'23"	53.82'	S38°09'07"W
C17	25.00'	13.41'	30°44'11"	13.25'	N55°20'43"E
C18	25.00'	17.36'	39°47'33"	17.02'	N20°04'51"E
C21	25.00'	13.24'	30°20'55"	13.09'	S14°59'26"E
C22	25.00'	17.53'	40°10'49"	17.17'	S50°15'18"E
C23	50.00'	53.43'	61°13'48"	50.93'	N39°43'49"W
C24	50.00'	57.83'	66°16'20"	54.66'	N24°01'15"E
C25	50.00'	45.49'	52°08'00"	43.94'	N63°13'25"E
C26	50.00'	26.18'	30°00'00"	25.88'	S55°42'35"E
C27	50.00'	26.18'	30°00'00"	25.88'	S25°42'35"E
C28	50.00'	9.51'	10°53'36"	9.49'	S05°15'47"E

LINE	LENGTH	BEARING
L1	25.00'	N89°48'59"W
L2	25.00'	S89°48'56"E
L8	20.72'	N30°57'17"W
L9	20.00'	S00°46'18"W
L10	11.42'	N49°17'25"E
L11	16.14'	N49°17'25"E
L12	35.75'	N00°11'01"E
L13	21.00'	N49°17'25"E

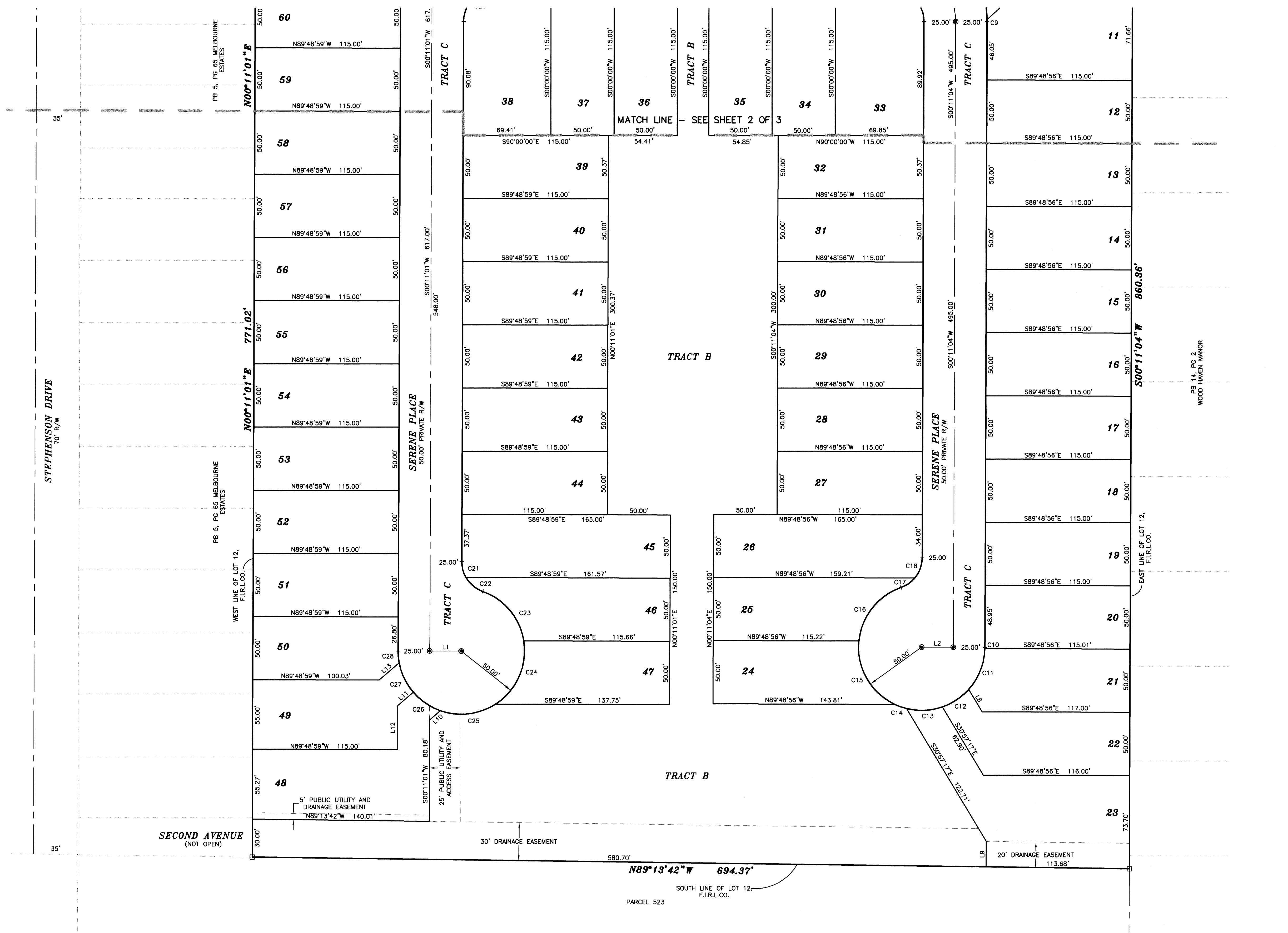


GRAPHIC SCALE



- LEGEND**
- R/W RIGHT-OF-WAY
  - ORB OFFICIAL RECORDS BOOK
  - D.E. DRAINAGE EASEMENT
  - PUB/DE PUBLIC UTILITY AND DRAINAGE EASEMENT
  - PUB/AE PUBLIC UTILITY AND ACCESS EASEMENT
  - Δ CURVE DELTA
  - R CURVE RADIUS
  - L CURVE LENGTH
  - NR NON-RADIAL
  - LB LICENSED BUSINESS
  - CL CENTERLINE
  - 4"x4" CONCRETE MONUMENT SET
  - ◻ STAMPED "POWSHOK PRM No. 5383"
  - NAIL AND DISK SET
  - ◻ STAMPED "POWSHOK PCP No. 5383"
  - F.I.R.L.Co. FLORIDA INDIAN RIVER LAND COMPANY SUBDIVISION

PLAT PREPARED BY  
**AAL LAND SURVEYING SERVICES, INC.**  
1103 W. HIBISCUS BLVD., SUITE 403  
WEST MELBOURNE, FLORIDA 32904  
(321) 768-8110



**NOTICE:** THIS PLAT, AS RECORDED IN ITS GRAPHIC FORM, IS THE OFFICIAL DEPICTION OF THE SUBDIVIDED LANDS DESCRIBED HEREIN AND WILL IN NO CIRCUMSTANCES BE SUPPLANTED IN AUTHORITY BY ANY OTHER GRAPHIC OR DIGITAL FORM OF THE PLAT. THERE MAY BE ADDITIONAL RESTRICTIONS THAT ARE NOT RECORDED ON THIS PLAT THAT MAY BE FOUND IN THE PUBLIC RECORDS OF THIS COUNTY.