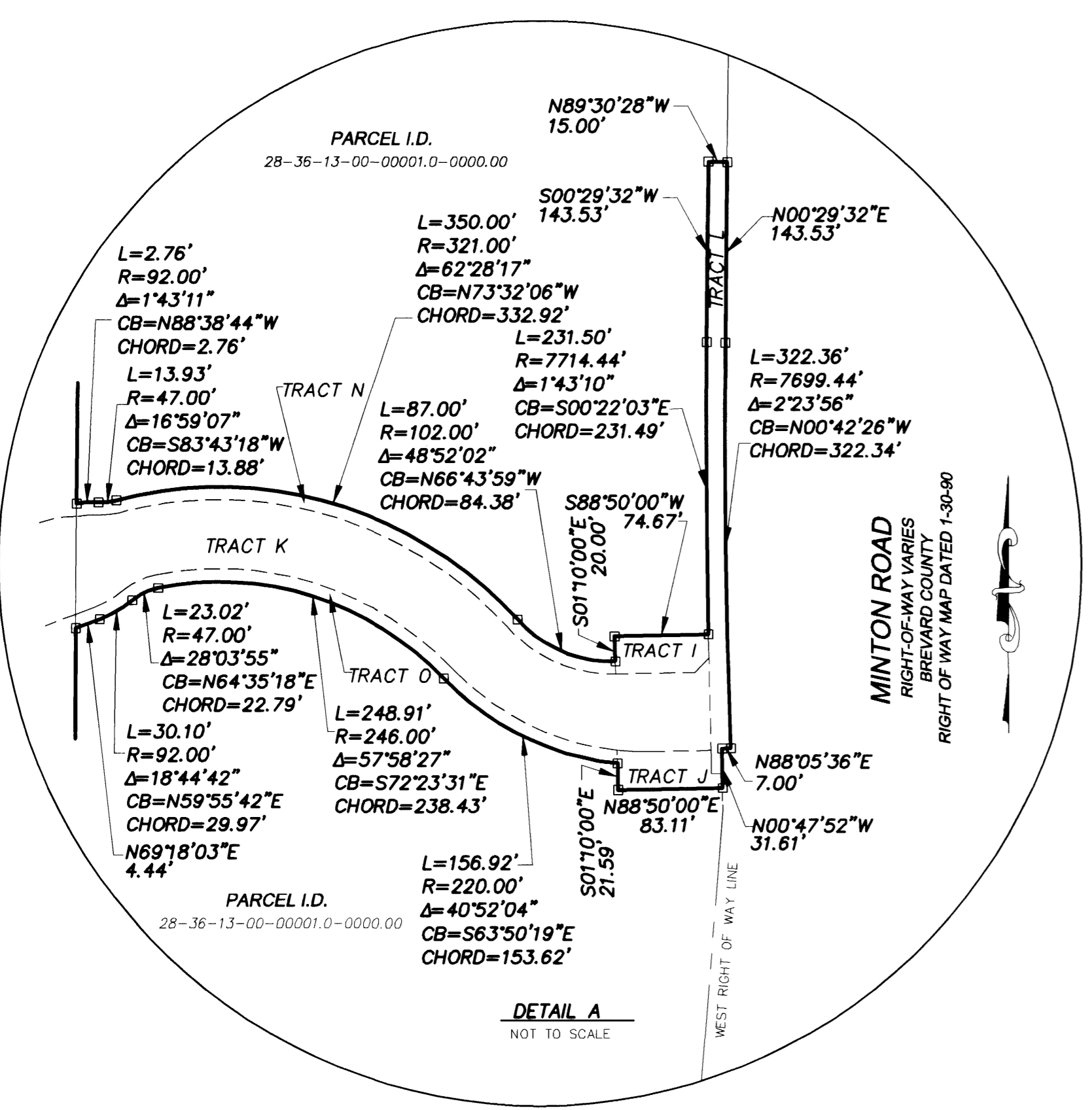
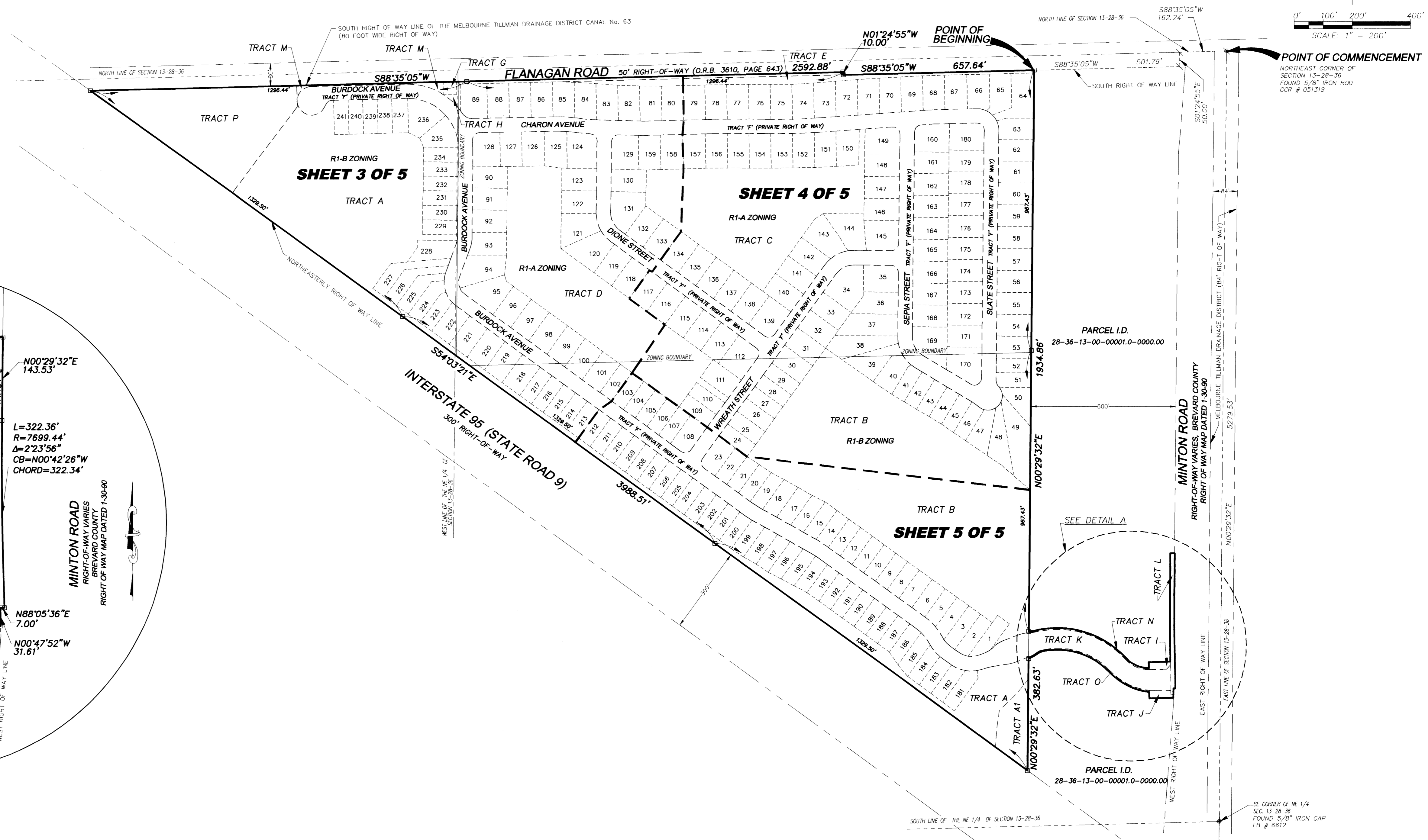
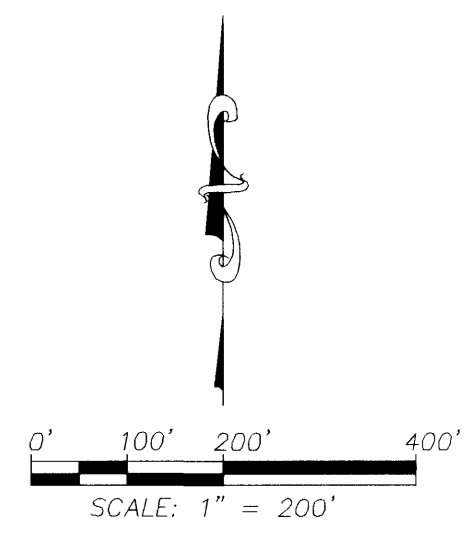


CRYSTAL LAKES WEST

A REPLAT OF A PORTION OF BLOCKS 86 THROUGH 90, 99 AND 100
 ALL ADDITION No. 2 TO JUNE PARK, PLAT BOOK 6, PAGE 32,
 AND A PORTION OF FLORIDA-INDIAN RIVER LAND COMPANY, PLAT BOOK 2, PAGE 80,
 SECTION 13, TOWNSHIP 28 SOUTH, RANGE 36 EAST,
 CITY OF WEST MELBOURNE, BREVARD COUNTY, FLORIDA



LEGEND

- LB LICENSED BUSINESS
- (NR) NON RADIAL
- RP RADIUS POINT
- PT POINT OF TANGENCY
- PI POINT OF INTERSECTION
- PC POINT OF CURVATURE
- PCC POINT OF COMPOUND CURVATURE
- PRC POINT OF REVERSE CURVATURE
- CI CURVE NUMBER
- LI LINE NUMBER
- A DELTA
- R RADIUS
- L LENGTH
- CB CHORD BEARING
- C CHORD DISTANCE
- FD FOUND
- CM CONCRETE MONUMENT
- CCR CERTIFIED CORNER RECORD
- ORB OFFICIAL RECORD BOOK
- (O&A) OVERALL DIMENSION
- FL&L FLORIDA POWER & LIGHT
- D.E. DRAINAGE EASEMENT
- DENOTES PRIM (PERMANENT REFERENCE MONUMENT) 4"x4" CONCRETE MONUMENT WITH DISC STAMPED PRIM LB #6393 SET IN ACCORDANCE WITH CHAPTER 177.091 FLORIDA STATUTES.
- DENOTES POP (PERMANENT CONTROL POINT) NAIL WITH DISC STAMPED POP LB # 6393 TO BE SET IN ACCORDANCE WITH CHAPTER 177.091 FLORIDA STATUTES.

TRACT DESIGNATION AND AREA

TRACT	DESCRIPTION	ACREAGE (AC)	OWNERSHIP / MAINTENANCE
A	ACCESS, DRAINAGE, STORMWATER TREATMENT, RECREATION, WALL & SIGNAGE, LANDSCAPE, IRRIGATION	8.61 +/-	HOA
A1	WETLAND PRESERVATION	0.52 +/-	HOA
B	ACCESS, DRAINAGE, STORMWATER TREATMENT, RECREATION, WALL & SIGNAGE	10.45 +/-	HOA
C	ACCESS, DRAINAGE, STORMWATER TREATMENT & RECREATION	4.48 +/-	HOA
D	ACCESS, DRAINAGE, STORMWATER TREATMENT & RECREATION	4.69 +/-	HOA
E	DRAINAGE, IRRIGATION, FENCE, PUBLIC UTILITIES, NO ACCESS FOR LOT OWNERS, PUBLIC SIDEWALK	0.96 +/-	HOA
F	PRIVATE RIGHT OF WAY - INGRESS/EGRESS; PUBLIC UTILITIES	11.55 +/-	HOA
G	LIFT STATION	0.05 +/-	CITY OF WEST MELBOURNE
H	ACCESS, PUBLIC UTILITIES, RECREATION, WALL & SIGNAGE, LANDSCAPE, IRRIGATION	0.05 +/-	HOA
I	SIGNAGE, LANDSCAPE, IRRIGATION AND SIDEWALK	0.04 +/-	HOA
J	SIGNAGE, LANDSCAPE, IRRIGATION AND SIDEWALK	0.05 +/-	HOA
K	PRIVATE RIGHT OF WAY - INGRESS/EGRESS; PUBLIC UTILITIES	0.82 +/-	HOA
L	ADDITIONAL RIGHT OF WAY	0.16 +/-	BREVARD COUNTY
M	DRAINAGE, LANDSCAPE, IRRIGATION, WALL & SIGNAGE, PUBLIC UTILITIES; PEDESTRIAN & EMERGENCY ACCESS ONLY	0.11 +/-	HOA
N	LANDSCAPE & ACCESS, IRRIGATION	0.05 +/-	HOA
O	LANDSCAPE & ACCESS, IRRIGATION	0.05 +/-	HOA
P	FUTURE DEVELOPMENT	3.19 +/-	HOA

NOTICE
 THIS PLAT, AS RECORDED IN ITS GRAPHIC FORM, IS THE OFFICIAL DEPICTION OF THE SUBDIVIDED LANDS DESCRIBED HEREIN AND WILL IN NO CIRCUMSTANCES BE SUPPLANTED IN AUTHORITY BY ANY OTHER GRAPHIC OR DIGITAL FORM OF THE PLAT. THERE MAY BE ADDITIONAL RESTRICTIONS THAT ARE NOT RECORDED ON THIS PLAT THAT MAY BE FOUND IN THE PUBLIC RECORDS OF THIS COUNTY.

