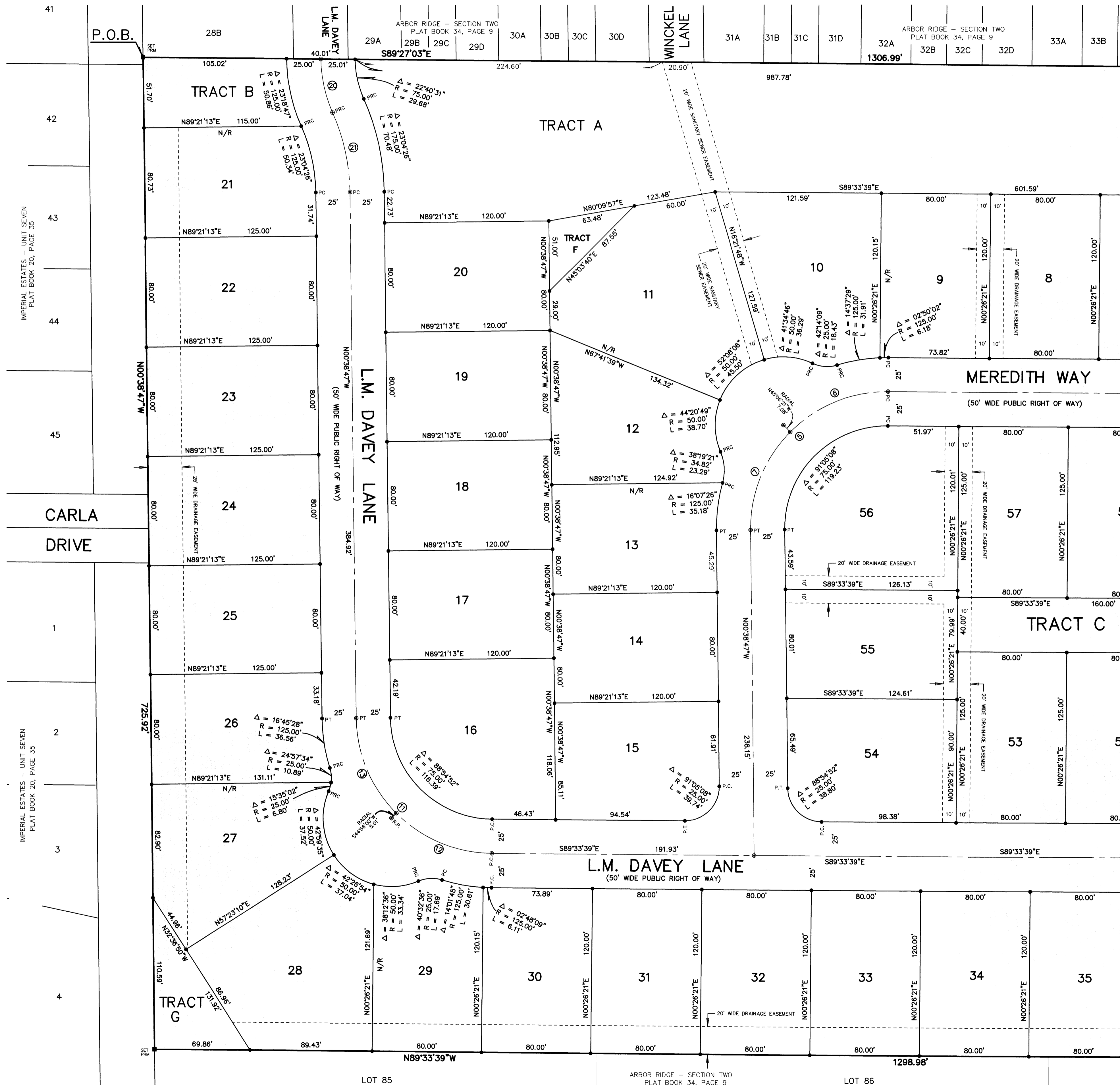


ARBOR WOODS

A RESUBDIVISION OF A PART OF LOTS 73 THROUGH 76 AND 85 THROUGH 88, SECTION 27, TOWNSHIP 22 SOUTH, RANGE 35 EAST AS SHOWN ON THE PLAT OF TITUSVILLE FRUIT AND FARM LANDS CO. AS RECORDED IN PLAT BOOK 2, PAGE 29 OF THE PUBLIC RECORDS OF BREVARD COUNTY, FLORIDA AND LYING IN THE CITY OF TITUSVILLE, BREVARD COUNTY, FLORIDA.

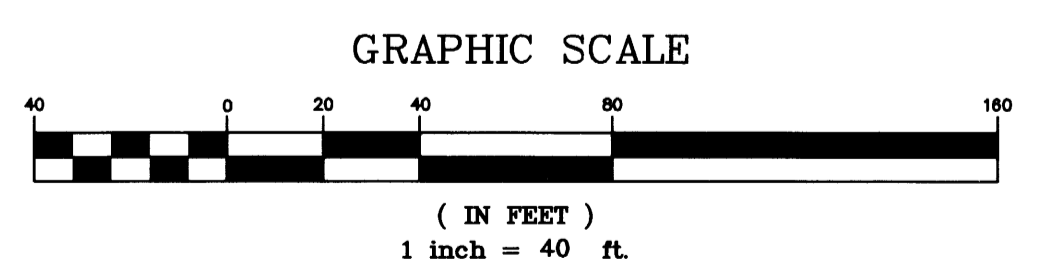


IMPERIAL ESTATES - UNIT SEVEN
PLAT BOOK 20, PAGE 35

IMPERIAL ESTATES - UNIT SEVEN
PLAT BOOK 20, PAGE 35



CURVE	DELTA	RADIUS	ARC	TANGENT	CHORD	CHORD BEARING
C1	30°37'52"	150.00	80.19	41.08	79.24	S74°40'06"W
C2	31°05'11"	150.00	81.38	41.72	80.39	N74°53'45"E
C3	28°38'47"	150.00	75.00	38.30	74.22	N73°40'33"E
C4	2°28'25"	150.00	6.39	3.19	6.39	N89°13'09"E
C5	91°05'08"	100.00	158.97	101.91	142.75	S44°53'47"W
C6	45°32'42"	100.00	79.49	41.98	77.41	S67°40'00"W
C7	45°32'42"	100.00	79.48	41.98	77.41	S22°07'26"W
C8	90°27'19"	100.00	157.87	100.80	141.98	N45°12'42"E
C9	45°13'39"	100.00	78.94	41.65	76.90	N67°49'31"E
C10	45°13'39"	100.00	78.94	41.65	76.90	N22°35'52"E
C11	88°54'52"	100.00	155.18	98.12	140.08	S45°06'13"E
C12	44°29'39"	100.00	77.86	40.91	75.72	S67°18'50"E
C13	44°29'39"	100.00	77.53	40.83	75.60	S22°31'24"E
C14	106°03'22"	25.00	46.28	33.21	39.95	N53°02'39"W
C15	52°55'33"	25.00	23.09	12.44	22.28	N79°36'33"W
C16	53°07'48"	25.00	23.18	12.50	22.36	N26°34'52"W
C17	82°03'04"	25.00	35.80	21.75	32.82	N41°00'34"E
C18	53°07'48"	25.00	23.18	12.50	22.36	N26°32'56"E
C19	28°55'16"	25.00	12.62	6.45	12.49	N67°34'28"E
C20	23°04'26"	100.00	40.27	20.41	40.00	S12°11'00"E
C21	23°04'26"	150.00	60.41	30.62	60.00	N12°11'00"W



PREPARED BY
Honeycutt & Associates, Inc.
ENGINEERS • SURVEYORS • PLANNERS
605 South Palm Avenue • Titusville, Florida 32796
(407) 267-6233 Fax (407) 269-7847
CERTIFICATE OF AUTHORIZATION NO. LB 6762