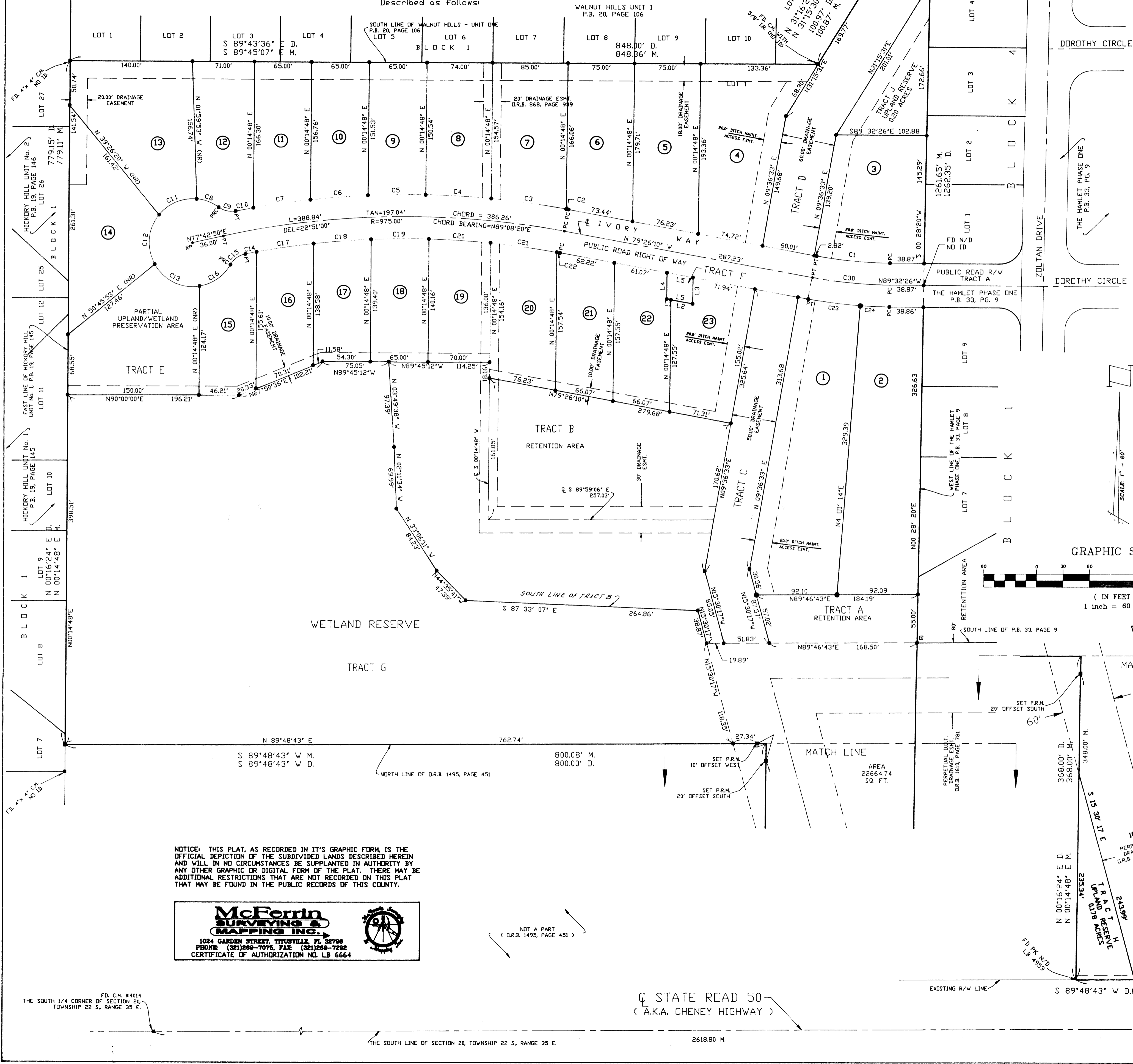


HICKORY CREEK SUBDIVISION

LEGAL DESCRIPTION:

A Replat of a part of Lots 99, 100, 101, 124, 125 and Lot 126, as shown on plat of Titusville Fruit and Farm Lands Company Subdivision, located in Section 20, Township 22 South, Range 35 East, Recorded in Plat Book 2, Page 29, as recorded in the Public Records of and being in the City of Titusville, Brevard County, Florida.
Described as follows:

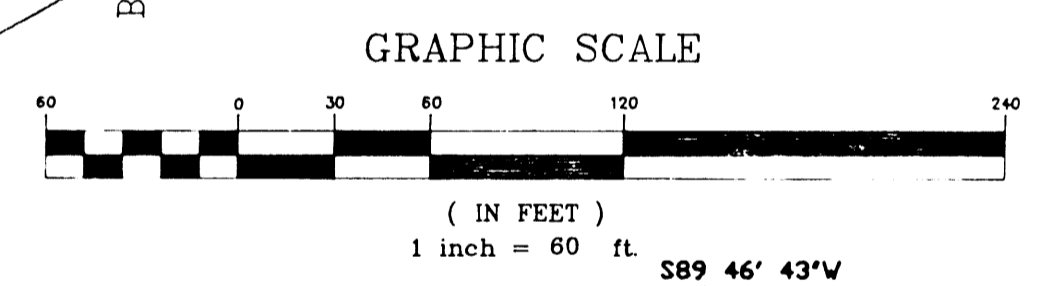


CURVE TABLE

CURVE	Delta	LENGTH	RADIUS	Chord	Ch bearing	Tangent
C1	10°06'16"	83.77'	475.00'	83.66'	S84°29'18"E	41.27'
C2	0°09'39"	2.79'	1000.00'	2.79'	N79°30'58"W	1.39'
C3	4°34'37"	85.80'	1000.00'	83.77'	N82°03'14"W	42.93'
C4	4°14'30"	74.13'	1000.00'	74.11'	N86°38'08"W	37.08'
C5	8°43'31"	65.82'	1000.00'	63.01'	S89°22'42"W	32.52'
C6	3°44'13"	65.22'	1000.00'	63.21'	S83°38'50"W	32.61'
C7	3°43'53"	65.71'	1000.00'	65.70'	S81°53'47"W	32.87'
C8	31°01'49"	27.08'	90.00'	26.79'	N69°24'37"W	13.88'
C9	47°16'07"	20.62'	25.00'	20.04'	S77°31'46"E	10.94'
C10	1°10'40"	28.56'	1000.00'	28.39'	S79°23'30"W	10.28'
C11	58°48'35"	48.71'	50.00'	46.80'	S67°18'01"W	24.48'
C12	68°26'22"	35.72'	30.00'	36.24'	S83°02'22"W	34.01'
C13	69°31'36"	60.96'	90.00'	57.25'	S64°06'37"E	34.92'
C14	0°46'46"	12.93'	950.00'	12.93'	S79°19'29"W	6.46'
C15	49°11'43"	21.47'	25.00'	20.81'	S54°20'19"W	11.44'
C16	31°13'12"	44.70'	50.00'	43.22'	N53°29'59"E	23.97'
C17	3°37'54"	65.74'	950.00'	63.73'	S81°41'50"W	32.88'
C18	3°36'01"	65.22'	950.00'	65.21'	S83°38'47"W	32.61'
C19	3°35'17"	65.02'	950.00'	65.00'	S89°34'24"W	32.52'
C20	4°13'49"	70.14'	950.00'	70.12'	N86°21'01"W	35.89'
C21	4°34'01"	75.72'	950.00'	73.70'	N81°57'06"W	37.88'
C22	0°13'54"	3.89'	950.00'	3.89'	N79°33'08"W	1.92'
C23	6°31'04"	39.72'	525.00'	39.59'	N87°44'33"W	16.44'
C24	3°35'12"	32.87'	325.00'	32.86'	N87°44'33"W	16.44'
C25	10°06'16"	88.18'	500.00'	88.06'	N84°29'18"E	44.20'

LINE TABLE

LINE	LENGTH	BEARING
L1	5.00'	N79°26'10"W
L2	25.00'	N79°26'10"W
L3	30.00'	N00°14'48"E
L4	30.00'	N00°14'48"E
L5	30.00'	N79°26'10"W



NOTICE: THIS PLAT, AS RECORDED IN ITS GRAPHIC FORM IS THE OFFICIAL DEPICTION OF THE SUBDIVIDED LANDS DESCRIBED HEREIN AND WILL IN NO CIRCUMSTANCES BE SUPPLANTED IN AUTHORITY BY ANY OTHER GRAPHIC OR DIGITAL FORM OF THE PLAT. THERE MAY BE ADDITIONAL RESTRICTIONS THAT ARE NOT RECORDED ON THIS PLAT THAT MAY BE FOUND IN THE PUBLIC RECORDS OF THIS COUNTY.

McFerrin SURVEYING & MAPPING INC.
1024 GARDEN STREET, TITUSVILLE, FL 32796
PHONE (321)269-7070, FAX (321)269-7292
CERTIFICATE OF AUTHORIZATION NO. LB 6664

NOT A PART (D.R.B. 1495, PAGE 451)

STATE ROAD 50 (A.K.A. CHENEY HIGHWAY)

THE SOUTH 1/4 CORNER OF SECTION 20, TOWNSHIP 22 S, RANGE 35 E.

THE SOUTH LINE OF SECTION 20, TOWNSHIP 22 S, RANGE 35 E.

2618.80 M.

THE SOUTH 1/4 CORNER OF SECTION 20, TOWNSHIP 22 S, RANGE 35 E.