

SHOPPES AT MINTON

A REPLAT OF LOT 3 AND A PORTION OF LOT 4, BLOCK 2
 MELBOURNE POULTRY COLONY, ADDITION NO. 1, PLAT BOOK 7, PAGE 12,
 SECTION 24, TOWNSHIP 28 SOUTH, RANGE 36 EAST,
 CITY OF PALM BAY, BREVARD COUNTY, FLORIDA

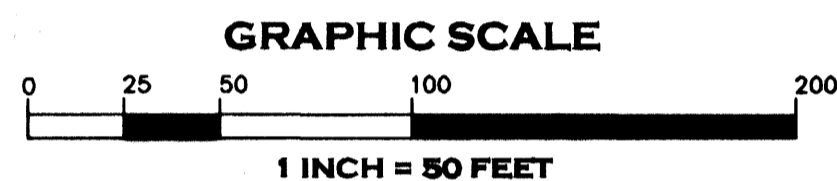
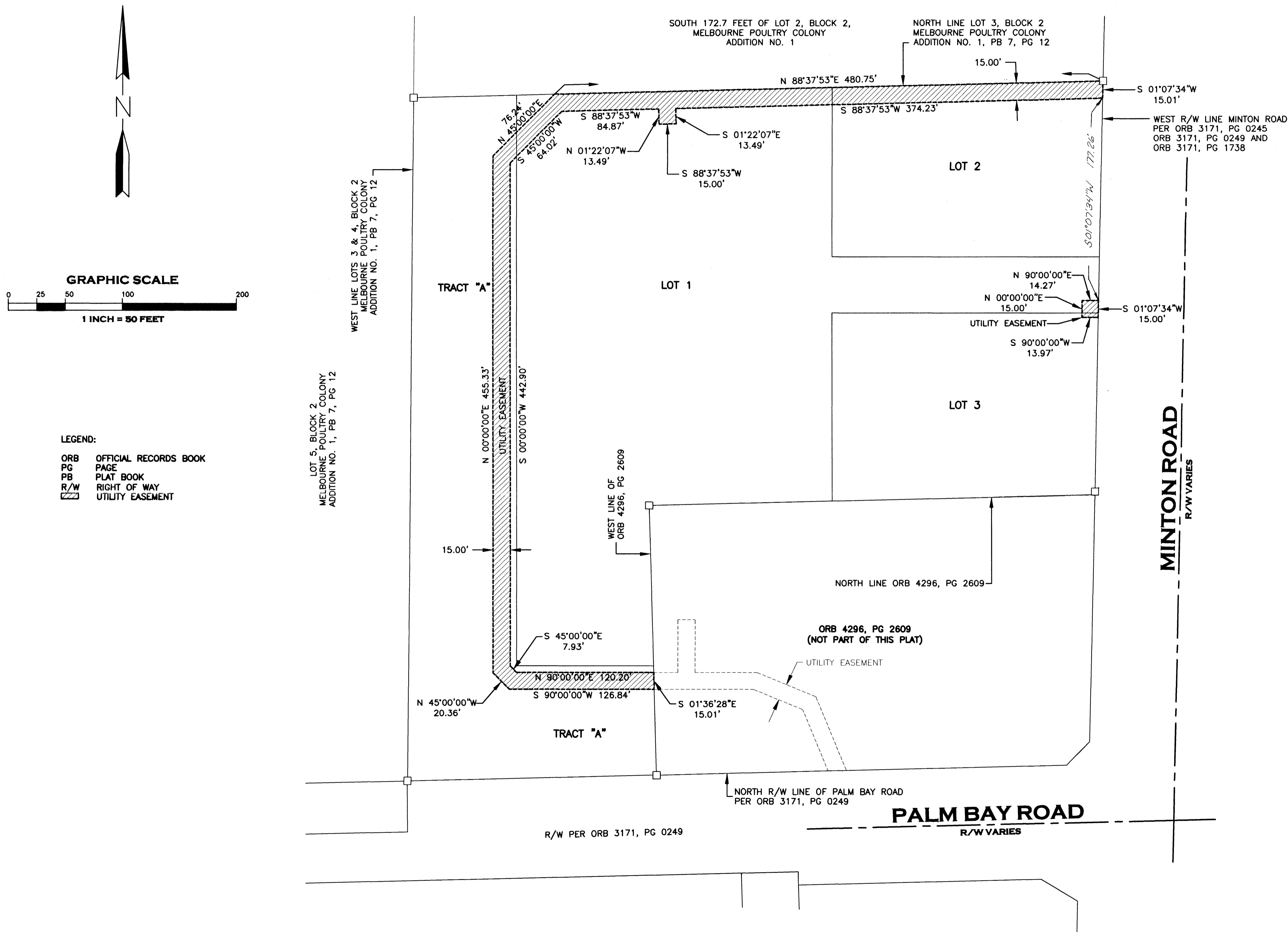
PLAT BOOK 56 PAGE 11

SHEET 3 OF 3

SECTION 24 TWP. 28 S., RANGE 36 E.

NOTICE: THIS PLAT, AS RECORDED IN ITS GRAPHIC FORM, IS THE OFFICIAL DEPICTION OF THE SUBDIVIDED LANDS DESCRIBED HEREIN AND WILL IN NO CIRCUMSTANCES SUPPLANT IN AUTHORITY BY ANY OTHER GRAPHIC OR DIGITAL FORM OF THE PLAT. THERE MAY BE ADDITIONAL RESTRICTIONS THAT ARE NOT RECORDED ON THIS PLAT THAT MAY BE FOUND IN THE PUBLIC RECORDS OF THIS COUNTY.

UTILITY EASEMENT DETAIL



LEGEND:

- ORB OFFICIAL RECORDS BOOK
- PG PAGE
- PB PLAT BOOK
- R/W RIGHT OF WAY
- UTILITY EASEMENT

LOT 5, BLOCK 2
 MELBOURNE POULTRY COLONY
 ADDITION NO. 1, PB 7, PG 12

WEST LINE LOTS 3 & 4, BLOCK 2
 MELBOURNE POULTRY COLONY
 ADDITION NO. 1, PB 7, PG 12



STOTTLER STAGG & ASSOCIATES
 ARCHITECTS ENGINEERS PLANNERS INC
 8680 N. Atlantic Avenue, Cape Canaveral, FL 32920
 Phone (321) 783-1320
 Fax (321) 783-7065
 www.stottlerstagg.com
 LB 6700