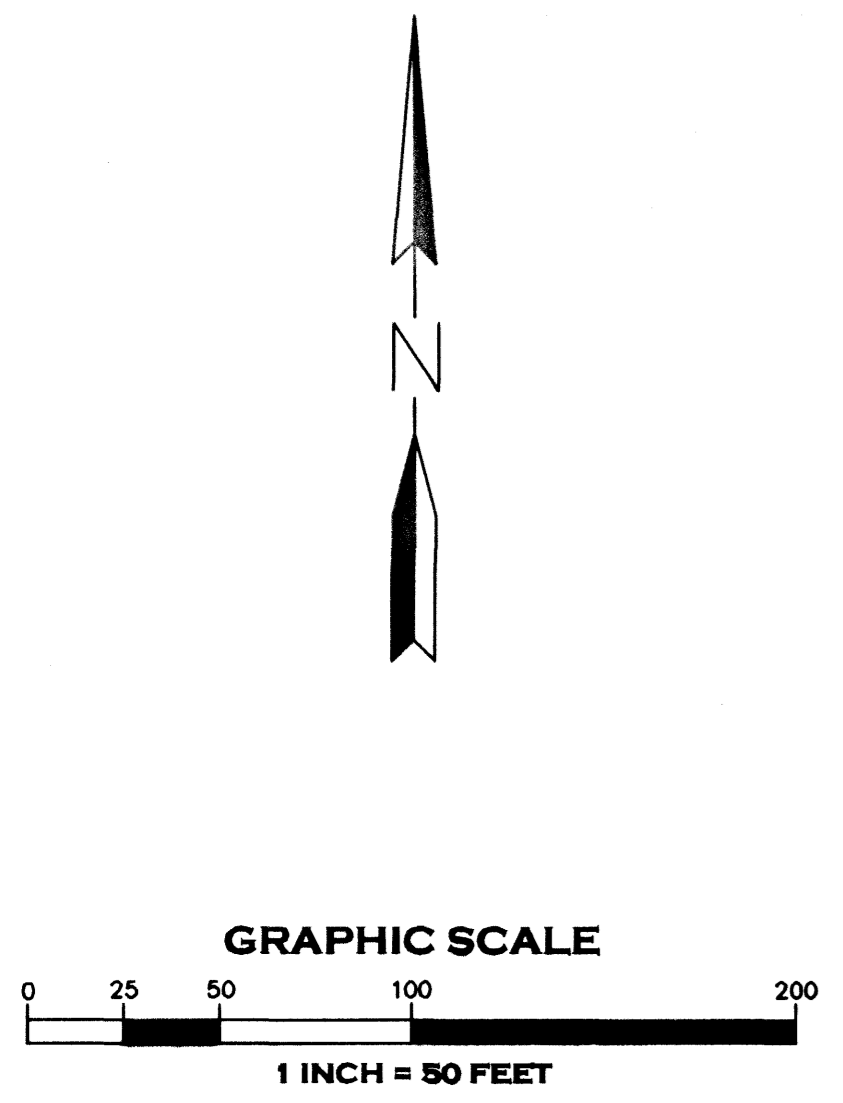


SHOPPES AT MINTON

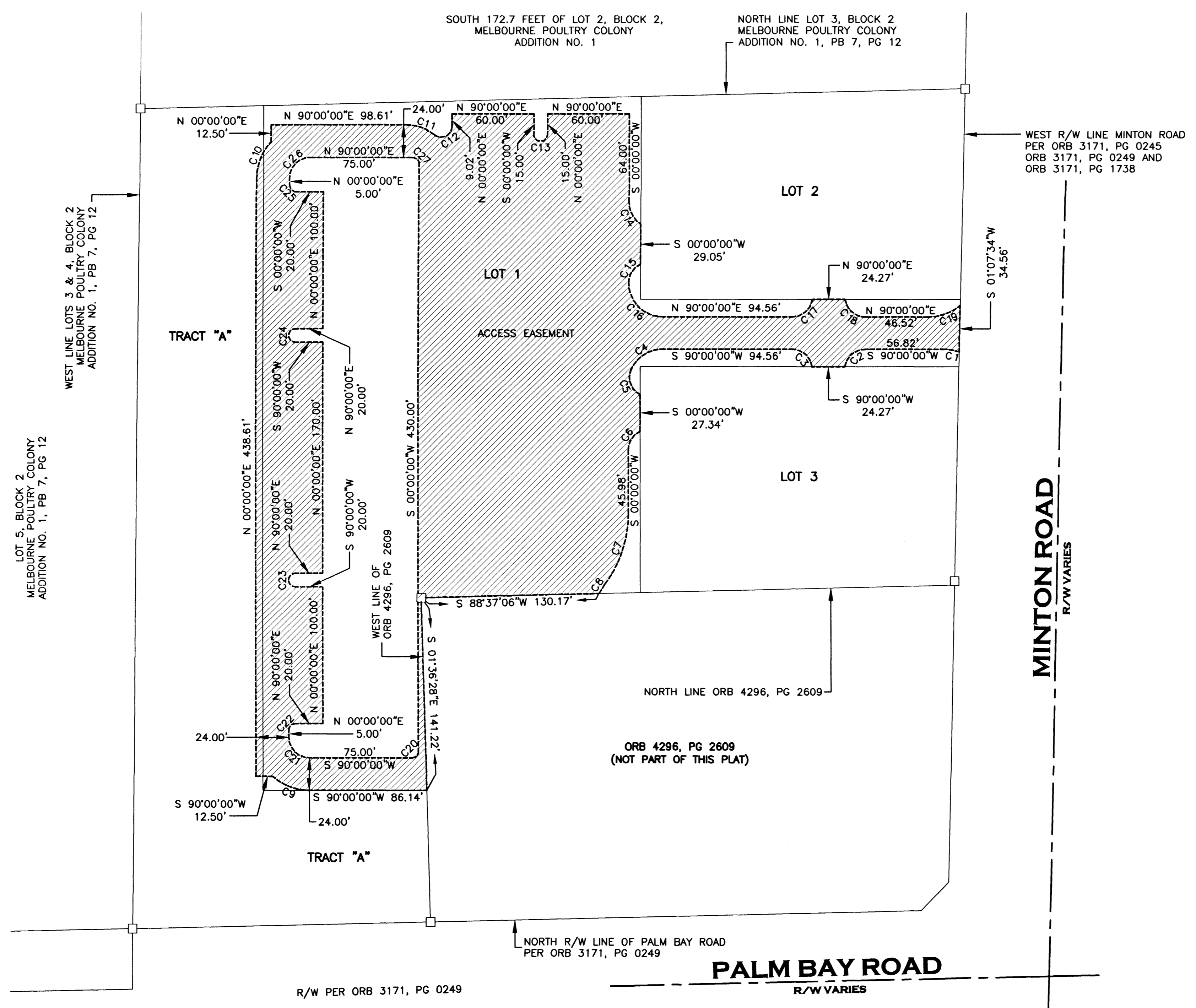
A REPLAT OF LOT 3 AND A PORTION OF LOT 4, BLOCK 2
 MELBOURNE POULTRY COLONY, ADDITION NO.1, PLAT BOOK 7, PAGE 12,
 SECTION 24, TOWNSHIP 28 SOUTH, RANGE 36 EAST,
 CITY OF PALM BAY, BREVARD COUNTY, FLORIDA

NOTICE: THIS PLAT, AS RECORDED IN ITS GRAPHIC FORM, IS THE OFFICIAL DEPICTION OF THE SUBDIVIDED LANDS DESCRIBED HEREIN AND WILL IN NO CIRCUMSTANCES SUPPLANT IN AUTHORITY BY ANY OTHER GRAPHIC OR DIGITAL FORM OF THE PLAT. THERE MAY BE ADDITIONAL RESTRICTIONS THAT ARE NOT RECORDED ON THIS PLAT THAT MAY BE FOUND IN THE PUBLIC RECORDS OF THIS COUNTY.

ACCESS EASEMENT DETAIL



LEGEND:
 ORB OFFICIAL RECORDS BOOK
 PG PAGE
 PB PLAT BOOK
 R/W RIGHT OF WAY
 ACCESS EASEMENT



CURVE DATA					
CURVE	RADIUS	LENGTH	DELTA	CHORD	CHORD BEARING
C1	35.00'	12.10'	19°48'36"	12.04'	N 80°05'42" W
C2	15.00'	21.56'	82°20'16"	19.75'	S 48°49'52" W
C3	15.00'	21.56'	82°20'16"	19.75'	N 48°49'52" W
C4	25.00'	28.98'	66°25'19"	27.39'	S 56°47'21" W
C5	15.00'	22.13'	84°32'40"	20.18'	S 18°41'39" E
C6	15.00'	16.90'	64°33'13"	16.02'	S 32°16'36" W
C7	87.00'	55.98'	36°52'12"	55.02'	S 18°26'08" W
C8	63.00'	7.80'	7°05'48"	7.80'	S 33°19'18" W
C9	39.00'	29.14'	42°48'13"	28.46'	N 68°35'54" W
C10	39.00'	29.14'	42°48'13"	28.46'	N 21°24'06" E
C11	34.00'	22.70'	38°14'48"	22.28'	S 70°52'36" E
C12	8.00'	17.91'	128°14'48"	14.40'	N 64°07'24" E
C13	5.00'	15.71'	180°00'00"	10.00'	N 90°00'00" E
C14	20.00'	19.23'	55°05'34"	18.50'	S 27°32'47" E
C15	15.00'	16.90'	64°33'13"	16.02'	S 32°16'36" W
C16	25.00'	39.27'	90°00'00"	35.36'	S 45°00'00" E
C17	15.00'	21.56'	82°20'13"	19.75'	N 48°49'54" E
C18	15.00'	21.56'	82°20'12"	19.75'	S 48°49'54" E
C19	35.00'	24.89'	40°45'09"	24.37'	N 69°37'26" E
C20	5.00'	7.85'	90°00'00"	7.07'	S 45°00'00" W
C21	15.00'	23.56'	90°00'00"	21.21'	N 45°00'00" W
C22	5.00'	7.85'	90°00'00"	7.07'	N 45°00'00" E
C23	5.00'	15.71'	180°00'00"	10.00'	N 00°00'00" E
C24	5.00'	15.71'	180°00'00"	10.00'	N 00°00'00" E
C25	5.00'	7.85'	90°00'00"	7.07'	N 45°00'00" W
C26	15.00'	23.56'	90°00'00"	21.21'	N 45°00'00" E
C27	5.00'	7.85'	90°00'00"	7.07'	S 45°00'00" E



STOTTLER STAGG & ASSOCIATES
 ARCHITECTS ENGINEERS PLANNERS INC
 8680 N. Atlantic Avenue, Cape Canaveral, FL. 32920
 Phone (321) 783-1320
 Fax (321) 783-7065
 www.stottlerstagg.com
 LB 6700