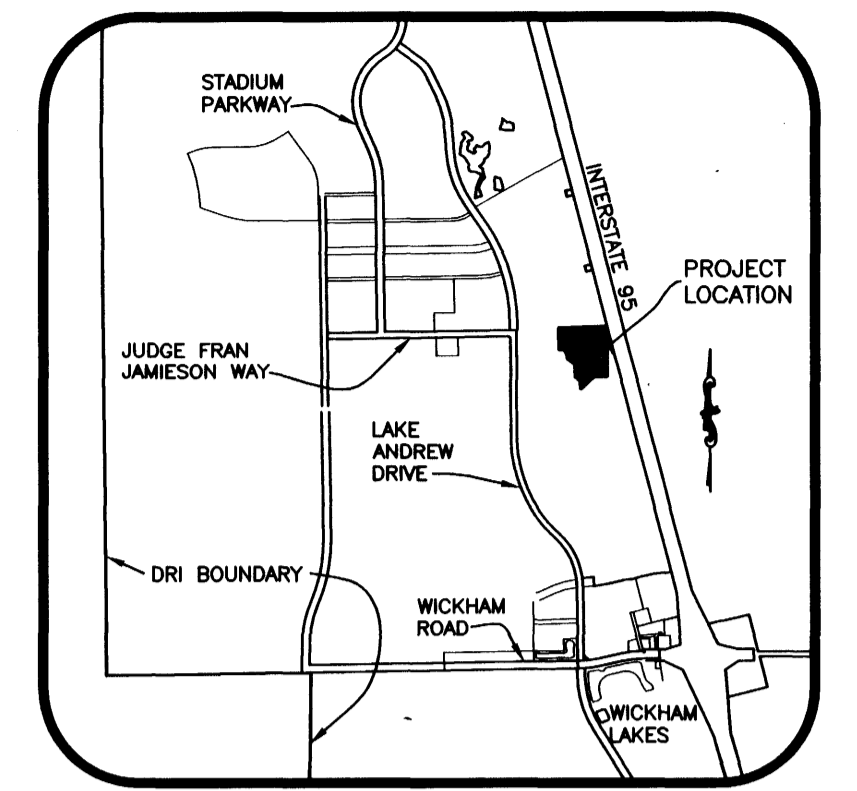


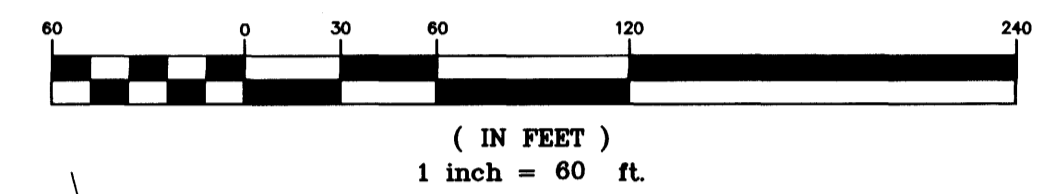
# HIGHLANDS OF VIERA EAST

A PORTION OF SECTION 4, TOWNSHIP 26 SOUTH, RANGE 36 EAST - VIERA, BREVARD COUNTY, FLORIDA



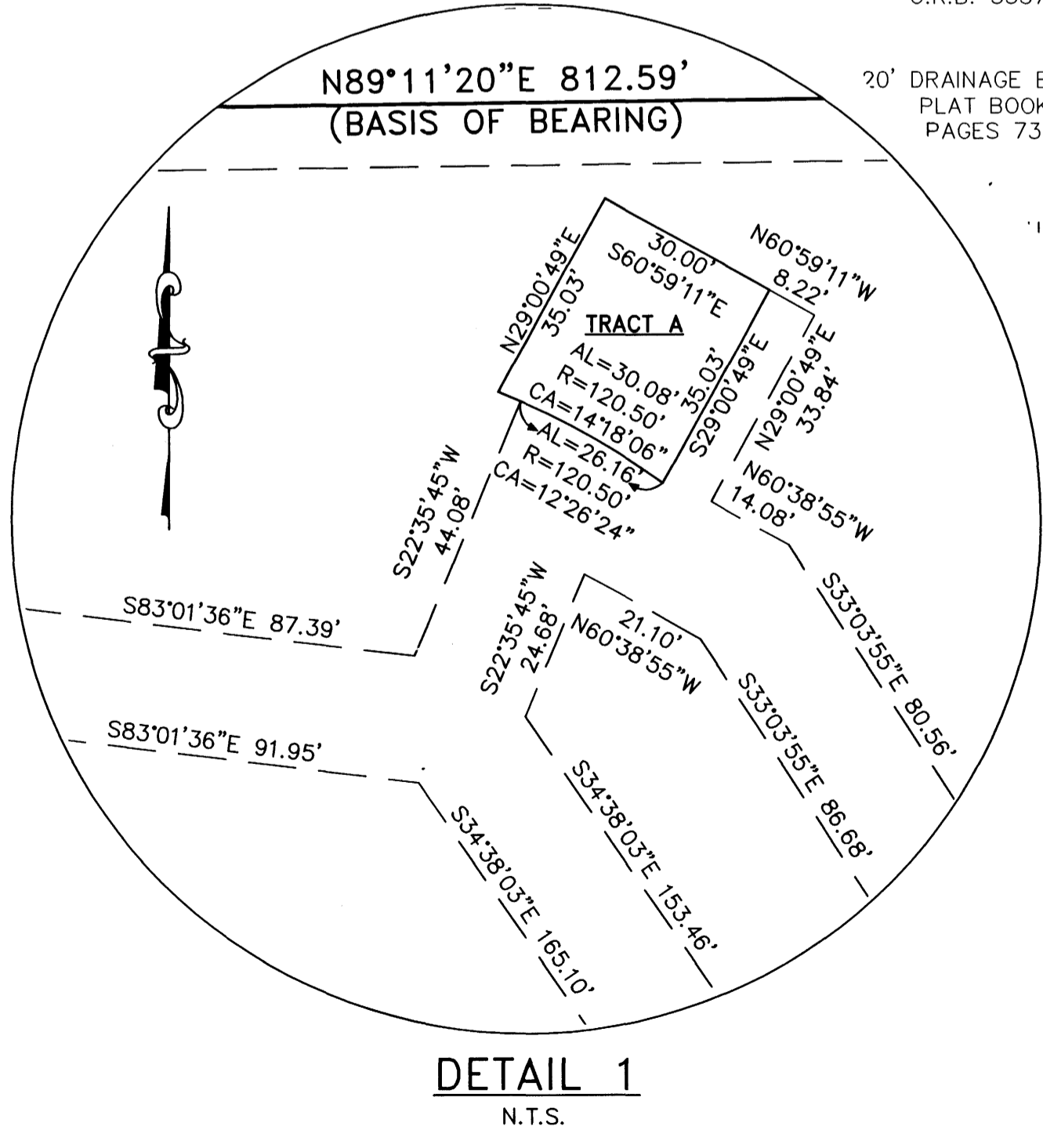
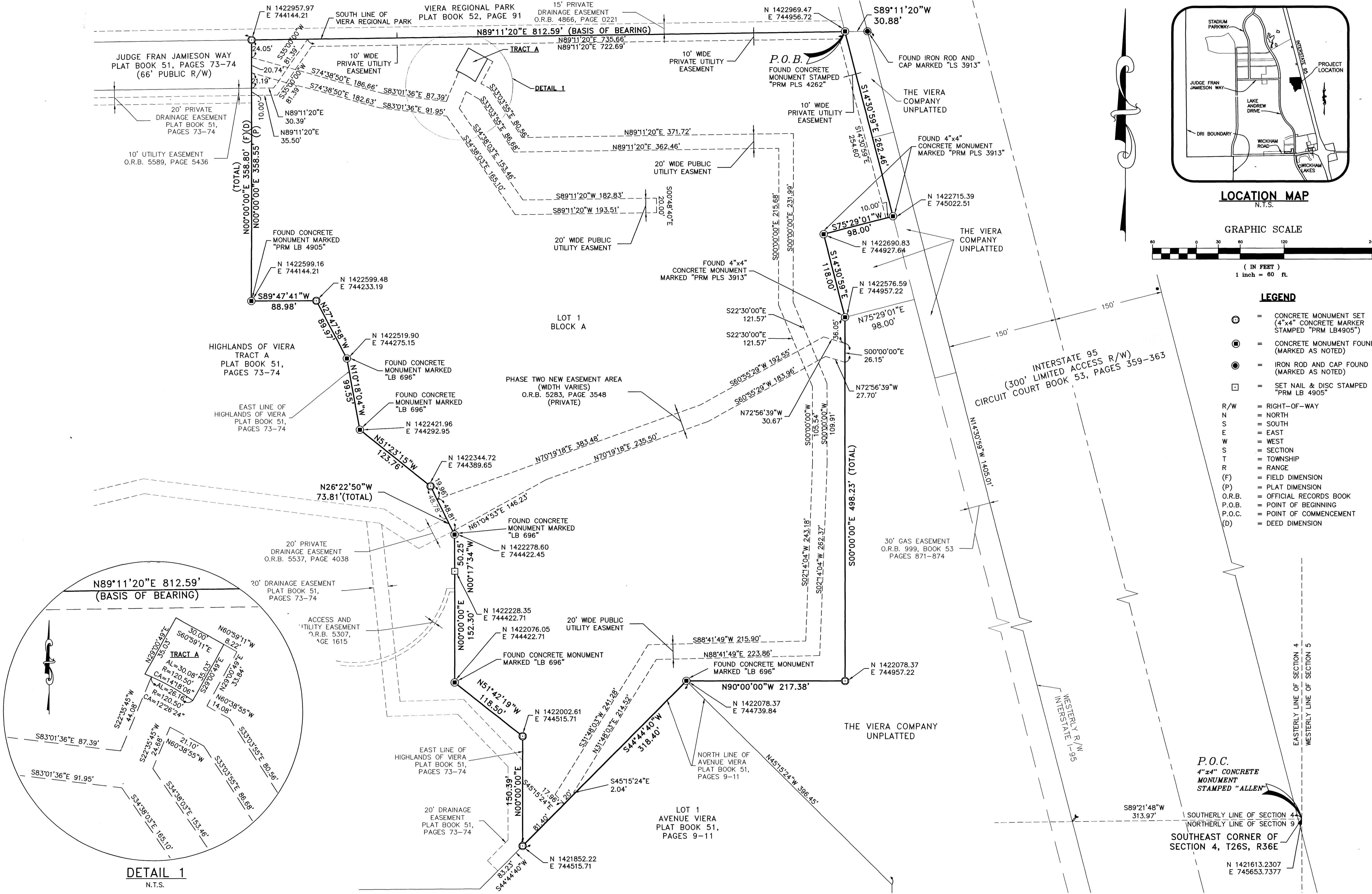
LOCATION MAP  
N.T.S.

GRAPHIC SCALE



**LEGEND**

- ⊙ = CONCRETE MONUMENT SET (4"x4" CONCRETE MARKER STAMPED "PRM LB4905")
- = CONCRETE MONUMENT FOUND (MARKED AS NOTED)
- ⊙ = IRON ROD AND CAP FOUND (MARKED AS NOTED)
- ⊠ = SET NAIL & DISC STAMPED "PRM LB 4905"
- R/W = RIGHT-OF-WAY
- N = NORTH
- S = SOUTH
- E = EAST
- W = WEST
- S = SECTION
- T = TOWNSHIP
- R = RANGE
- (F) = FIELD DIMENSION
- (P) = PLAT DIMENSION
- O.R.B. = OFFICIAL RECORDS BOOK
- P.O.B. = POINT OF BEGINNING
- P.O.C. = POINT OF COMMENCEMENT
- (D) = DEED DIMENSION



**B.S.E. CONSULTANTS, INC.**  
CONSULTING - ENGINEERING - LAND SURVEYING  
312 SOUTH HARBOR CITY BOULEVARD, SUITE 4  
MELBOURNE, FLORIDA PHONE: (321) 725-3674 FAX: (321) 723-1159  
CERTIFICATE OF BUSINESS AUTHORIZATION: 4905  
CERTIFICATE OF LAND SURVEYING BUSINESS AUTHORIZATION: 180004905

THIS PLAT PREPARED BY  
LESLIE E. HOWARD, PROFESSIONAL SURVEYOR AND MAPPER  
FLORIDA CERTIFICATION No. 5611  
B.S.E. CONSULTANTS, INC. LB No. 4905

DATE: 6-10-06  
B.S.E. DWG. 10855302

NOTICE: THIS PLAT, AS RECORDED IN ITS GRAPHIC FORM, IS THE OFFICIAL DEPICTION OF THE SUBDIVIDED LANDS DESCRIBED HEREIN AND WILL IN NO CIRCUMSTANCES BE SUPPLANTED IN AUTHORITY BY ANY OTHER GRAPHIC OR DIGITAL FORM OF THE PLAT. THERE MAY BE ADDITIONAL RESTRICTIONS THAT ARE NOT RECORDED ON THIS PLAT THAT MAY BE FOUND IN THE PUBLIC RECORDS OF THIS COUNTY.