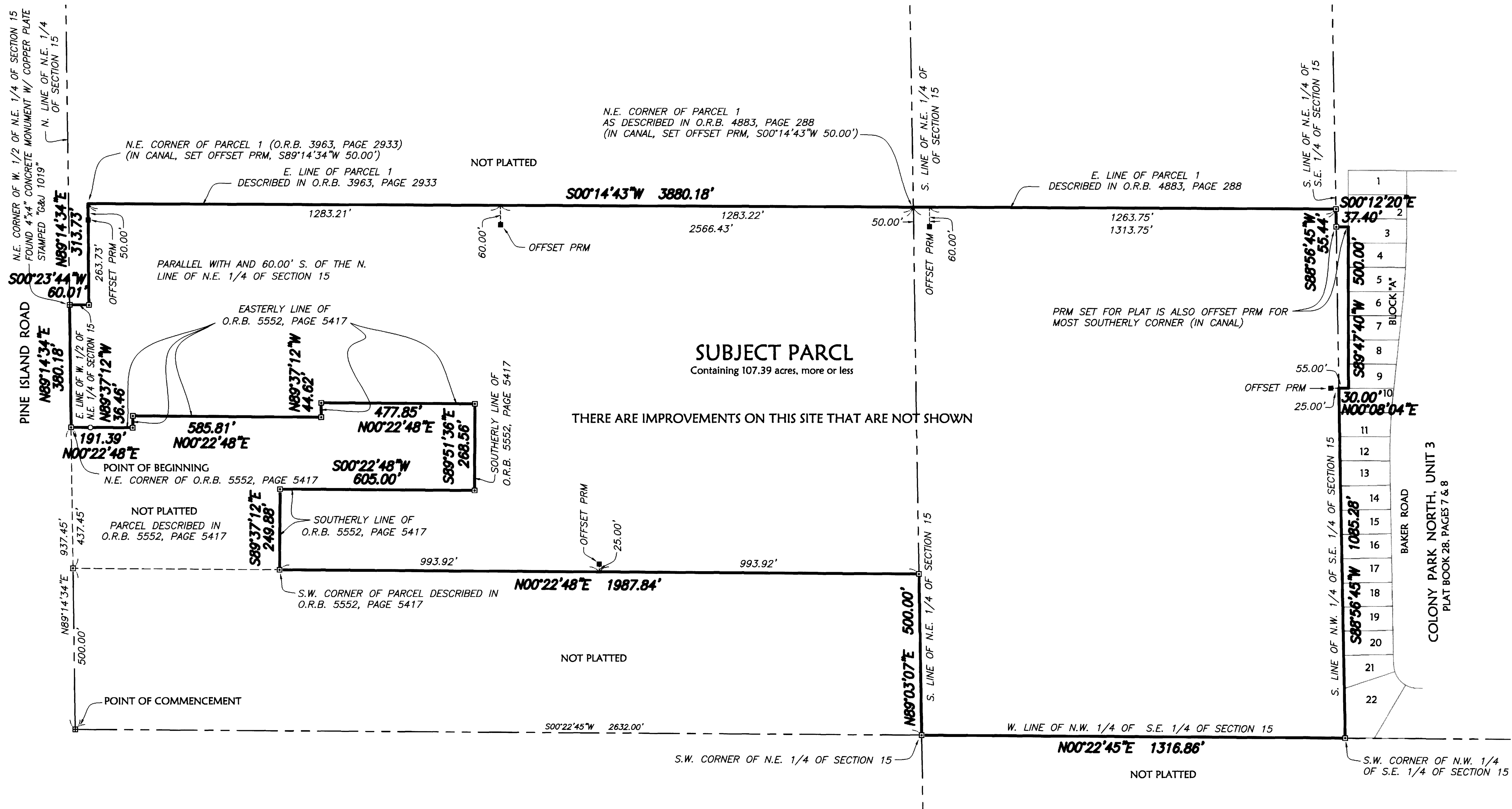


PRESERVE POINTE

A SUBDIVISION LYING IN SECTION 15, TOWNSHIP 23 SOUTH, RANGE 36 EAST OF BREVARD COUNTY, FLORIDA

MAP SHOWING THE BOUNDARY OF PLATTED LANDS



SUBJECT PARCEL
 Containing 107.39 acres, more or less

THERE ARE IMPROVEMENTS ON THIS SITE THAT ARE NOT SHOWN

EASEMENT LEGEND:

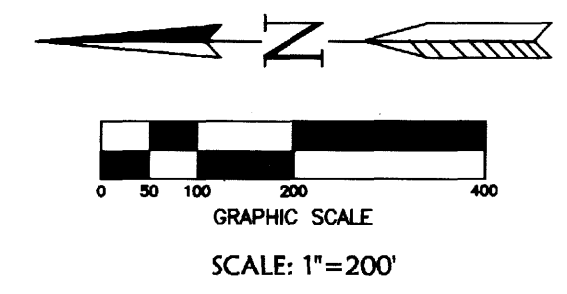
- (A) 15' PRIVATE DRAINAGE & PRIVATE SIDEWALK EASEMENT
- (B) 10' PUBLIC UTILITIES EASEMENT
- (C) 40' PUBLIC DRAINAGE & UTILITIES EASEMENT
- (D) 10' FLORIDA POWER & LIGHT CO. EASEMENT
- (E) 20' PRIVATE DRAINAGE EASEMENT
- (F) 20' PUBLIC DRAINAGE EASEMENT
- (G) 30' DRAINAGE EASEMENT TO ADJACENT PROPERTY OWNER

ABBREVIATIONS:

- A ARC LENGTH
- R RADIUS
- D CENTRAL ANGLE
- CH CHORD LENGTH
- CH BRG UNITED STATES COAST & GEODETIC SURVEY
- U.S.C.&G.S. PERMANENT REFERENCE MONUMENT
- PRM PROFESSIONAL LAND SURVEYOR
- PLS PARKER KALON (BRAND NAME)
- P.K. LAND SURVEYING BUSINESS
- LB PLANNED UNIT DEVELOPMENT
- PUD PROFESSIONAL SURVEYOR & MAPPER
- PSM PERMANENT CONTROL POINT
- PCP TYPICAL
- TYP. OFFICIAL RECORDS BOOK
- O.R.B. RIGHT OF WAY
- R/W

LEGEND:

- ▣ = SET 4"x4" CONCRETE MONUMENT W/ BRASS DISK STAMPED "PRM PLS 4262"
- ⊠ = SET MAG NAIL & DISK STAMPED "PCP PLS 4262"
- △ = SET MAG NAIL & DISK STAMPED "ALLEN ENG LB 266"
- = SET 5/8" IRON ROD W/ CAP STAMPED "ALLEN ENG LB 266"
- = SET 4"x4" CONCRETE MONUMENT W/ BRASS DISK STAMPED "PRM PLS 4262 OFFSET"



Prepared By:
ALLEN Engineering, Inc.
 SURVEYORS - ENGINEERS
 106 DIXIE LANE
 COCOA BEACH, FLORIDA 32931
 TELEPHONE: (321)785-7443 - FAX: (321)785-5902
 WEBSITE: www.alleneng.net - EMAIL: info@alleneng.net
 CERTIFICATE OF AUTHORIZATION #LB266