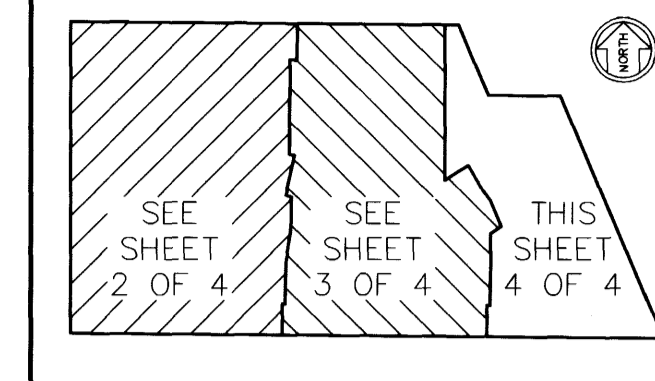


Sisson Meadows

A SUBDIVISION LYING IN SECTION 27, TOWNSHIP 22 SOUTH, RANGE 35 EAST, CITY OF TITUSVILLE, BREVARD COUNTY, FLORIDA; BEING A PARTIAL REPLAT OF LOTS 34, 35, 63 AND 64 AND A REPLAT OF ALL OF LOTS 36 THROUGH 40, INCLUSIVE, AND ALL OF LOTS 57 THROUGH 62, INCLUSIVE, OF THE PLAT OF "TITUSVILLE FRUIT AND FARM LAND CO." PER PLAT BOOK 2 AT PAGE 29

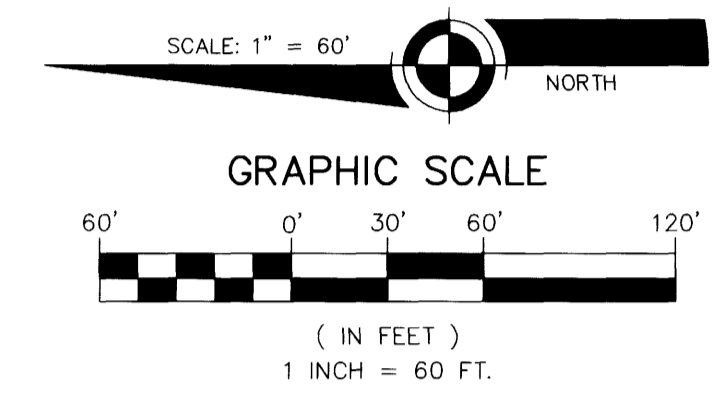


SHEET KEY MAP
N.T.S.

CURVE	RADIUS	DELTA	LENGTH	TANGENT	CHORD	BEARING
C5	75.00'	56°47'08"	74.33'	40.54'	71.33'	N 62°03'46" E
C6	75.00'	56°47'08"	74.33'	40.54'	71.33'	N 05°16'37" E
C7	75.00'	113°34'17"	148.66'	114.55'	125.49'	N 33°40'12" E
C8	50.00'	84°42'29"	73.92'	45.58'	67.37'	N 65°28'12" W
C9	525.00'	15°56'38"	146.09'	73.52'	145.62'	S 64°12'15" W
C37	50.00'	9°35'15"	8.37'	4.19'	8.36'	N 85°39'42" E
C38	50.00'	38°56'33"	33.98'	17.68'	33.33'	N 61°23'48" E
C39	50.00'	38°56'33"	33.98'	17.68'	33.33'	N 22°27'15" W
C40	50.00'	26°05'56"	22.78'	11.59'	22.58'	N 10°03'59" W
C41	50.00'	113°34'17"	99.11'	76.37'	83.66'	N 33°40'12" E
C42	75.00'	8°48'27"	11.53'	5.78'	11.52'	N 27°31'11" W
C43	75.00'	28°57'18"	37.90'	19.36'	37.50'	N 46°24'03" W
C44	75.00'	28°57'18"	37.90'	19.36'	37.50'	N 75°21'22" W
C45	75.00'	17°59'26"	23.55'	11.87'	23.45'	S 81°10'16" W
C46	75.00'	84°42'29"	110.88'	68.37'	101.06'	N 65°28'12" W
C47	550.00'	1°53'02"	18.09'	9.04'	18.08'	S 71°14'02" W
C48	550.00'	4°59'02"	47.84'	23.94'	47.83'	S 67°48'00" W
C49	550.00'	4°59'02"	47.84'	23.94'	47.83'	S 62°48'58" W
C51	550.00'	15°56'38"	153.05'	77.02'	152.55'	S 64°12'15" W
C152	50.00'	113°34'17"	99.11'	76.37'	83.66'	N 33°40'12" E
C153	25.00'	84°42'29"	36.96'	22.79'	33.69'	N 65°28'12" W
C154	500.00'	11°10'06"	97.46'	48.89'	97.31'	S 66°35'31" W
C156	500.00'	15°56'38"	139.13'	70.02'	138.69'	S 64°12'15" W
C203	170.00'	9°35'15"	28.45'	14.26'	28.41'	N 85°39'42" E
C204	170.00'	38°56'33"	115.54'	60.10'	113.33'	N 61°23'48" E
C205	170.00'	38°56'33"	115.54'	60.10'	113.33'	N 22°27'15" E
C206	170.00'	26°05'56"	77.44'	39.40'	76.77'	N 10°03'59" W
C207	170.00'	113°34'17"	336.97'	259.65'	284.45'	N 33°40'12" E
C208	195.00'	8°48'27"	29.98'	15.02'	29.95'	N 27°31'11" W
C209	195.00'	28°57'18"	98.55'	50.35'	97.50'	N 46°24'03" W
C210	195.00'	28°57'18"	98.55'	50.35'	97.50'	N 75°21'22" W
C211	195.00'	17°59'26"	61.23'	30.87'	60.98'	S 81°10'16" W
C212	195.00'	84°42'29"	288.30'	177.77'	262.75'	N 65°28'12" W
C213	670.00'	1°53'02"	22.03'	11.02'	22.03'	S 71°14'02" W
C214	670.00'	4°59'02"	58.28'	29.16'	58.26'	S 67°48'00" W
C215	670.00'	4°59'02"	58.28'	29.16'	58.26'	S 62°48'58" W
C217	670.00'	15°56'38"	186.44'	93.83'	185.84'	S 64°12'15" W
C235	380.00'	2°54'35"	19.30'	9.65'	19.30'	S 57°41'14" W

LEGEND:

BMEC	BUSSEN-MAYER ENGINEERING GROUP	P.B.	PLAT BOOK
FND.	FOUND	PG.	PAGE
C.M.	CONCRETE MONUMENT	C.C.R.	CERTIFIED CORNER REPORT
R.R.S.	RAILROAD SPIKE	(R.)	RADIAL
RB/C	REBAR/CAP	(N.R.)	NON-RADIAL
P.K./W	PARKER KRAYLON NAIL/WASHER	(TYP)	TYPICAL
L.B.	LICENSED BUSINESS	(N.I.C.)	NOT INCLUDED
P.L.S.	PROFESSIONAL LAND SURVEYOR	(N.T.S.)	NOT TO SCALE
P.R.M.	PERMANENT REFERENCE MONUMENT	P.D.E.	PRIVATE DRAINAGE EASEMENT
P.C.P.	PERMANENT CONTROL POINT	ESM'T.	EASEMENT
P.I.	POINT OF INTERSECTION	R/W	RIGHT-OF-WAY
P.C.	POINT OF CURVATURE	⊕	CENTERLINE
P.T.	POINT OF TANGENCY	W/	WITH
P.R.C.	POINT OF REVERSE CURVE	LXX	LINE TABLE NUMBER
R.P.	RADIUS POINT	CXX	CURVE TABLE NUMBER
O.R.B.	OFFICIAL RECORDS BOOK	(57)	LOT NUMBER, PLAT BOOK 2-PAGE 29
P.S.M.	PROFESSIONAL SURVEYOR AND MAPPER		



- NOTES:**
- SEE SHEET 1 OF 4 FOR ADDITIONAL BOUNDARY INFORMATION, LEGAL DESCRIPTION AND ADDITION NOTES.
 - SEE SHEET 2 AND 3 OF 4 FOR CONTINUATION OF LOTS.
 - SEE THIS SHEET FOR LEGEND.

LINE	LENGTH	BEARING
L1	16.28'	S 56°19'49" E
L4	16.42'	N 23°06'57" W
L17	10.00'	N 00°27'20" E
L28	20.00'	S 89°32'40" E
L29	20.00'	N 89°32'40" W
L30	37.50'	N 89°32'40" W
L31	16.42'	N 23°06'57" W
L38	41.27'	S 89°32'40" E

