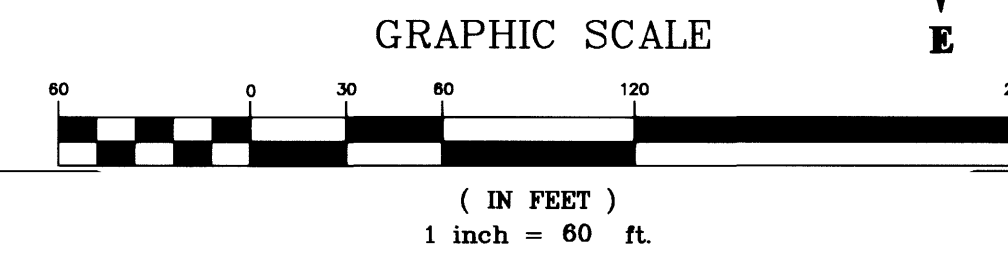
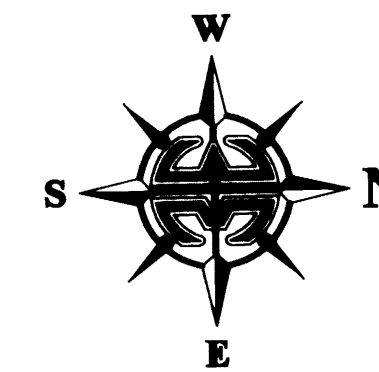


PINWOOD ESTATES

A REPLAT OF LOT 32, FLORIDA INDIAN RIVER LAND COMPANY SUBDIVISION, PLAT BOOK 1, PAGE 164,
 PUBLIC RECORDS OF BREVARD COUNTY FLORIDA, SECTION 29, TOWNSHIP 28 SOUTH, RANGE 37 EAST
 CITY OF PALM BAY, COUNTY OF BREVARD, FLORIDA.



NOTICE: THIS PLAT, AS RECORDED IN ITS GRAPHIC FORM, IS THE OFFICIAL DEPICTION OF THE SUBDIVIDED LANDS DESCRIBED HEREIN AND WILL IN NO CIRCUMSTANCES BE SUPPLANTED IN AUTHORITY BY ANY OTHER GRAPHIC OR DIGITAL FORM OF THE PLAT. THERE MAY BE ADDITIONAL RESTRICTIONS THAT ARE NOT RECORDED ON THIS PLAT THAT MAY BE FOUND IN THE PUBLIC RECORDS OF THIS COUNTY.

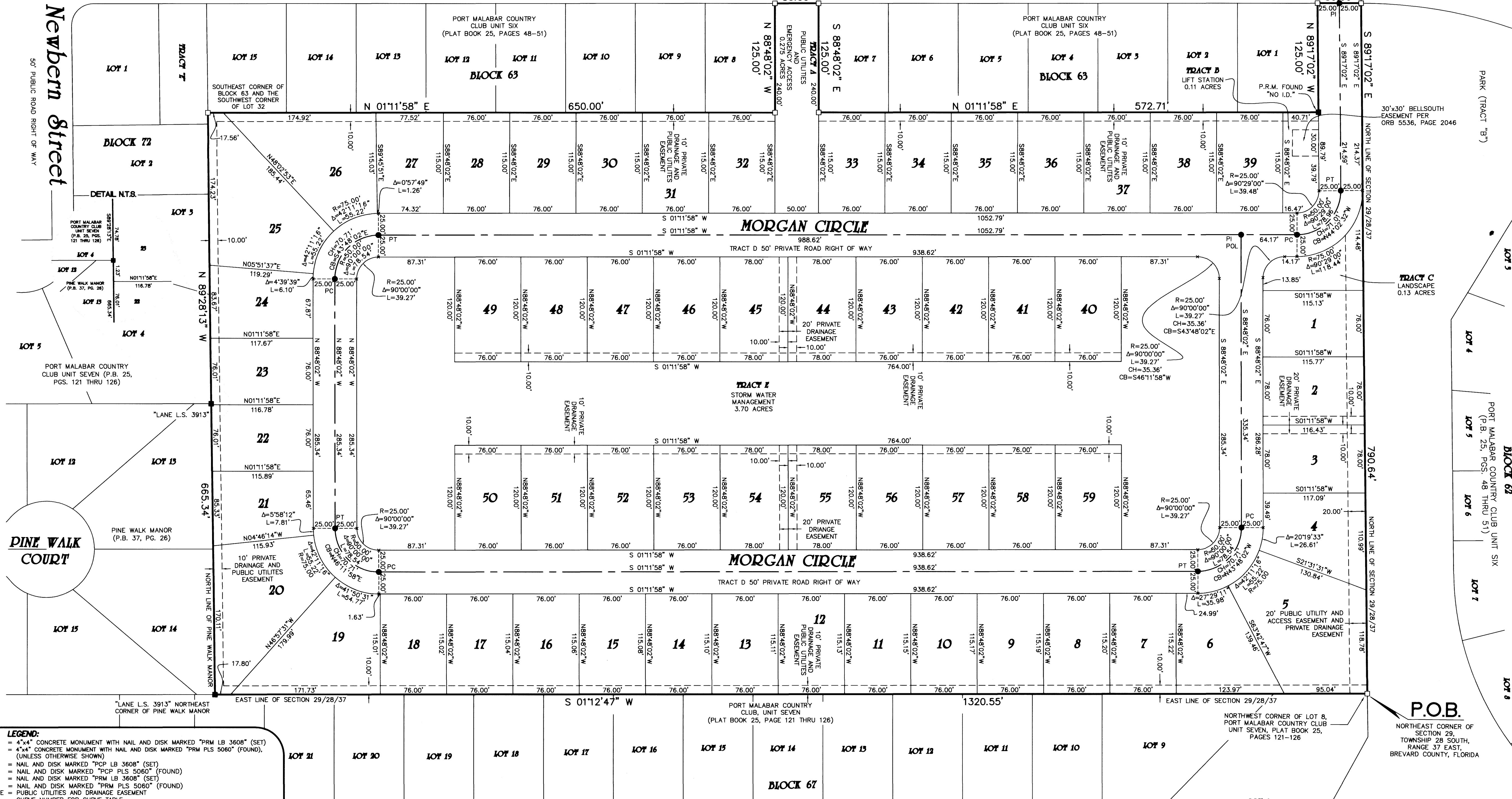
NOTE:
 PRIOR TO THE RELEASE OF THE PERFORMANCE BOND,
 ALL LOT CORNER MONUMENTATION WILL BE SET AS
 1/2" IRON RODS WITH CAPS MARKED "LB 3608".

Mariposa Drive

80' PUBLIC ROAD RIGHT OF WAY

N 01°11'58" E
50.00'

N 01°11'58" E
50.00'



LEGEND:

□	= 4"x4" CONCRETE MONUMENT WITH NAIL AND DISK MARKED "PRM LB 3608" (SET)	x	= DENOTES LINE BREAK/CHANGE IN DIRECTION
■	= 4"x4" CONCRETE MONUMENT WITH NAIL AND DISK MARKED "PRM PLS 5060" (FOUND), (UNLESS OTHERWISE SHOWN)	(R)	= RADIAL
●	= NAIL AND DISK MARKED "PCP LB 3608" (SET)	(NR)	= NON-RADIAL
○	= NAIL AND DISK MARKED "PCP PLS 5060" (FOUND)	ESMT.	= EASEMENT
▲	= NAIL AND DISK MARKED "PRM LB 3608" (SET)	O.R.B./O.R.BOOK	= OFFICIAL RECORDS BOOK
▲	= NAIL AND DISK MARKED "PRM PLS 5060" (FOUND)	H.O.A.	= HOME OWNERS ASSOCIATION
PU&DE	= PUBLIC UTILITIES AND DRAINAGE EASEMENT	LB	= LICENSED BUSINESS
C##	= CURVE NUMBER FOR CURVE TABLE	PLS	= PROFESSIONAL LAND SURVEYOR
L##	= LINE NUMBER FOR LINE TABLE	PSM	= PROFESSIONAL SURVEYOR AND MAPPER
R/W	= RIGHT-OF-WAY	R	= RADIUS
P.B.	= PLAT BOOK	D/Δ	= DELTA
PG.	= PAGE	L	= LENGTH
RP	= RADIUS POINT	CD/CH	= CHORD DISTANCE
POL	= POINT-ON-LINE	CB	= CHORD BEARING
POC	= POINT-OF-CURVATURE	BLK	= BLOCK
PI	= POINT-OF-INTERSECTION		
PT	= POINT-OF-TANGENCY		
PC	= POINT-OF-CURVATURE		
PRC	= POINT-OF-REVERSE CURVATURE		
PCC	= POINT-OF-COMPOUND CURVATURE		
P.O.B.	= POINT-OF-BEGINNING		
P.O.C.	= POINT-OF-COMMENCEMENT		
PRM	= PERMANENT REFERENCE MONUMENT		
PCP	= PERMANENT CONTROL POINT		

Hampshire Avenue

50' PUBLIC ROAD RIGHT OF WAY

P.O.B.
 NORTHWEST CORNER OF
 SECTION 29,
 TOWNSHIP 28 SOUTH,
 RANGE 37 EAST,
 BREVARD COUNTY, FLORIDA