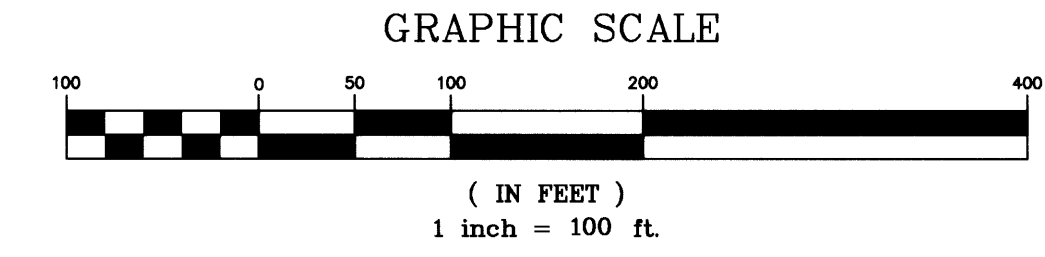
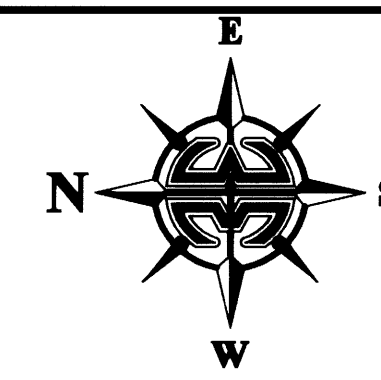


**NOTE:**  
PRIOR TO THE RELEASE OF THE PERFORMANCE BOND,  
ALL LOT CORNER MONUMENTATION WILL BE SET AS  
1/2" IRON RODS WITH CAPS MARKED "LB 3608".

# TRALEE BAY SHORES PHASE ONE

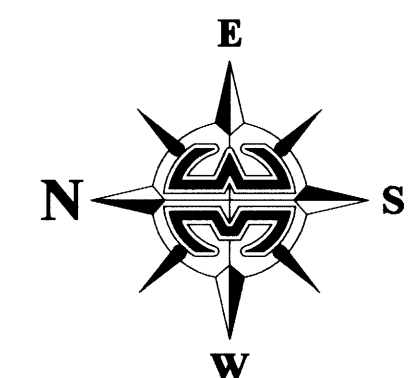
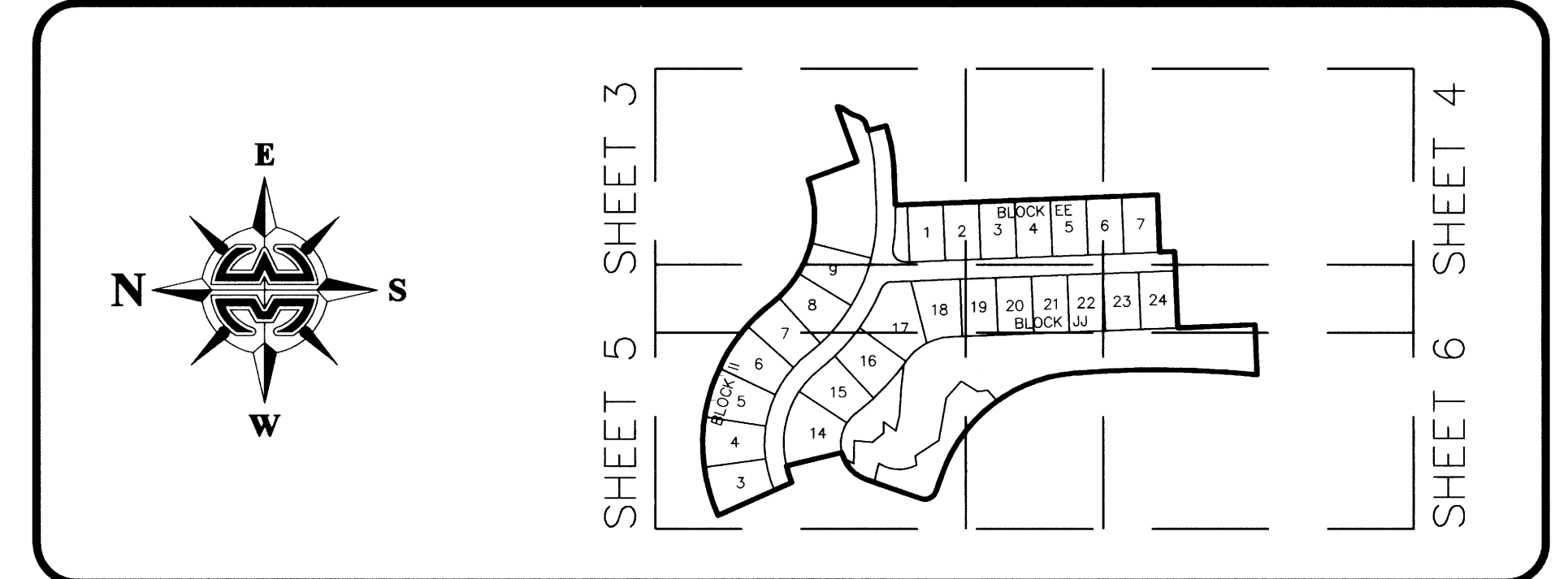
A PORTION OF POD "K" OF ST. PATRICK PLANNED UNIT DEVELOPMENT  
BEING A REPLAT OF A PORTION OF TRACT 3A, CAPRON RIDGE PHASE FIVE, AS RECORDED IN PLAT BOOK 54, PAGES 5-14,  
SECTION 2, TOWNSHIP 26 SOUTH, RANGE 36 EAST, BREVARD COUNTY, FLORIDA

PLAT BOOK 55 PAGE 86  
SHEET 2 OF 6  
SECTION 2 TWP. 26 S., RANGE 36 E.

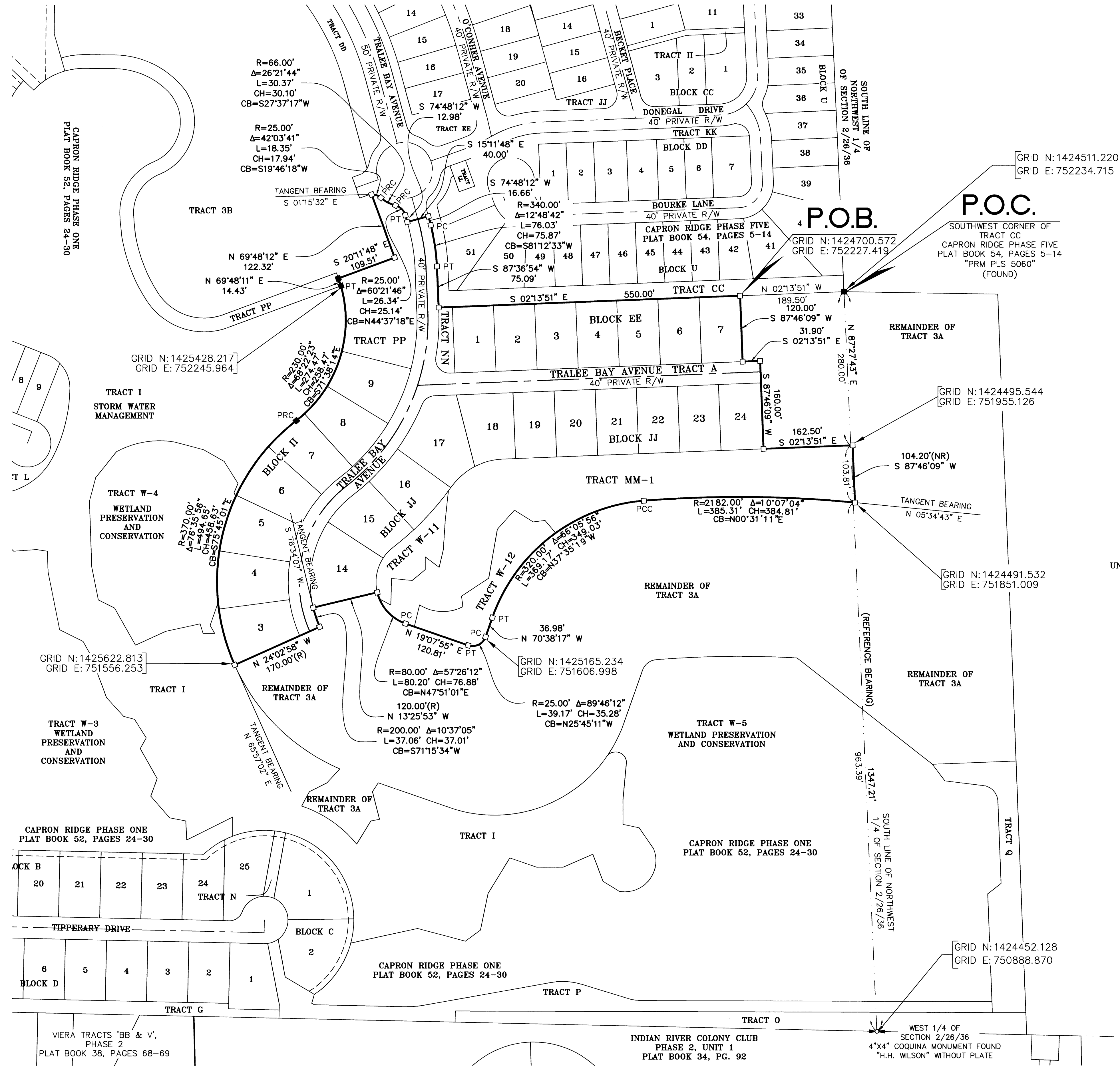


NOTICE: THIS PLAT, AS RECORDED IN ITS GRAPHIC FORM, IS THE OFFICIAL DEPICTION OF THE SUBDIVIDED LANDS DESCRIBED HEREIN AND WILL IN NO CIRCUMSTANCES BE SUPPLANTED IN AUTHORITY BY ANY OTHER GRAPHIC OR DIGITAL FORM OF THE PLAT. THERE MAY BE ADDITIONAL RESTRICTIONS THAT ARE NOT RECORDED ON THIS PLAT THAT MAY BE FOUND IN THE PUBLIC RECORDS OF THIS COUNTY.

## KEY MAP (NOT TO SCALE)



UN-PLATTED



- LEGEND:**
- = 4"x4" CONCRETE MONUMENT WITH NAIL AND DISK MARKED "PRM LB 3608" (SET)
  - = 4"x4" CONCRETE MONUMENT WITH NAIL AND DISK MARKED "PRM PLS 5060" (FOUND), (UNLESS OTHERWISE SHOWN)
  - = NAIL AND DISK MARKED "PCP LB 3608" (SET)
  - = NAIL AND DISK MARKED "PCP PLS 5060" (FOUND)
  - △ = NAIL AND DISK MARKED "PRM LB 3608" (SET)
  - ▲ = NAIL AND DISK MARKED "PRM PLS 5060" (FOUND)
  - PU&DE = PUBLIC UTILITIES AND DRAINAGE EASEMENT
  - C## = CURVE NUMBER FOR CURVE TABLE
  - L## = LINE NUMBER FOR LINE TABLE
  - R/W = RIGHT-OF-WAY
  - P.B. = PLAT BOOK
  - PG. = PAGE
  - RP = RADIUS POINT
  - POL = POINT-ON-LINE
  - POC = POINT-ON-CURVE
  - PI = POINT-OF-INTERSECTION
  - PT = POINT-OF-TANGENCY
  - PC = POINT-OF-CURVATURE
  - PRC = POINT-OF-REVERSE CURVATURE
  - PCC = POINT-OF-COMPOUND CURVATURE
  - P.O.B. = POINT-OF-BEGINNING
  - P.O.C. = POINT-OF-COMMENCEMENT
  - PRM = PERMANENT REFERENCE MONUMENT
  - PCP = PERMANENT CONTROL POINT
  - X = DENOTES LINE BREAK/CHANGE IN DIRECTION
  - (R) = RADIAL
  - (NR) = NON-RADIAL
  - ESMT. = EASEMENT
  - O.R.B./O.R. BOOK = OFFICIAL RECORDS BOOK
  - H.O.A. = HOME OWNERS ASSOCIATION
  - LB = LICENSED BUSINESS
  - PLS. = PROFESSIONAL LAND SURVEYOR
  - PSM = PROFESSIONAL SURVEYOR AND MAPPER
  - R = RADIUS
  - D/Δ = DELTA
  - L = LENGTH
  - CD/CH = CHORD DISTANCE
  - CB = CHORD BEARING
  - BLK = BLOCK